



***Free Crochet Pattern***  
**Lion Brand® Wool-Ease® Tonal**  
**1 Ball Mitts**  
**Pattern Number: L60093**



## **SKILL LEVEL - Easy**

### **SIZE**

**Finished Circumference** About 7 in. (18 cm), will stretch to fit

**Finished Length** About 7 in. (18 cm)

### **MATERIALS**

- Lion Brand® Wool-Ease® Tonal (Art. #635)
  - 109 Royal Blue 1 ball
  - or colors of your choice
- Lion Brand® crochet hook size K-10.5 (6.5 mm)
- Lion Brand® large-eyed blunt needle



### **GAUGE**

3 (sc, 2 dc) groups + 7 rnds = about 3 1/2 in. (9 cm).

**BE SURE TO CHECK YOUR GAUGE.**

### **STITCH EXPLANATION**

**6-dc Cl (6 double crochet cluster)** Yarn over, insert hook in indicated st and draw up a loop, yarn over and draw through 2 loops on hook (2 loops rem on hook), (yarn over, insert hook in same st and draw up a loop, yarn over and draw through 2 loops on hook) 5 times (7 loops rem on hook), yarn over, draw through all loops on hook.

### **NOTES**

1. Each Mitt is worked in one piece in joined rnds. The first part of each Mitt is worked in a (sc, 2 dc) pattern, turn at the beg of each rnd. The remainder of each Mitt is worked in hdc, do not turn at beg of these rnds.
2. Bobbles are worked separately then sewn to each Mitt.
3. For those who find a visual helpful, we've included a stitch diagram.

### **MITTS (make 2)**

Ch 18; join with sl st in first ch to form a ring, taking care not to twist ch.

**Rnd 1:** Ch 2 (does not count as a st), 2 dc in same ch as joining, \*sk next 2 ch, (sc, 2 dc) in next ch; rep from \* to last 2 ch, sk last 2 ch, sc in same ch as first 2 dc; join with sl st in top of beg ch – you will have 6 (sc, 2 dc) groups in this rnd.

**Rnds 2-10:** Ch 2 (does not count as a st), turn, 2 dc in first sc, \*sk next 2 sts, (sc, 2 dc) in next st; rep from \* to last 2 sts, sk last 2 sts, sc in same sc as first 2 dc; join with sl st in top of beg ch.

**Rnd 11:** Ch 2 (does not count as a st), turn, hdc in each st around; join with sl st in top of beg ch – 18 hdc.

For thousands of free patterns, visit our website [www.LionBrand.com](http://www.LionBrand.com)

To order visit our website [www.lionbrand.com](http://www.lionbrand.com) or call: (800) 258-YARN (9276) any time!

Copyright ©1998-2016 Lion Brand Yarn Company, all rights reserved.

No pattern or other material may be reproduced -- mechanically, electronically, or by any other means, including photocopying - without written permission of Lion Brand Yarn Company.

**Rnd 12:** Ch 2 (does not count as a st), do not turn, hdc in each st around; join with sl st in top of beg ch – 18 hdc.

**Thumb Opening**

**Rnd 13:** Ch 2 (does not count as a st), do not turn, hdc in first 8 sts, ch 2, sk next 2 sts, hdc in last 8 sts; join with sl st in top of beg ch – 16 sts and 1 ch-2 sp.

**Rnd 14:** Ch 2 (does not count as a st), do not turn, hdc in each st to ch-2 sp, 2 hdc in ch-2 sp, hdc in each st to end of rnd; join with sl st in top of beg ch – 18 hdc.

Fasten off.

**BOBBLES (make 6)**

Ch 3, (6-dc Cl, ch 1, sl st) in 3rd ch from hook, ch 10.

Fasten off, leaving a long tail for sewing.

**FINISHING**

Sew 3 Bobbles to wrist edge of each Mitt, on side of Mitt opposite the thumb opening.

Weave in ends.

**ABBREVIATIONS**

beg = begin(ning)(s)

ch = chain

ch-sp(s) = chain space(s) previously made

dc = double crochet

hdc = half double crochet

rep = repeat

rnd(s) = round(s)

sc = single crochet

sk = skip

sl st = slip stitch

st(s) = stitch(es)

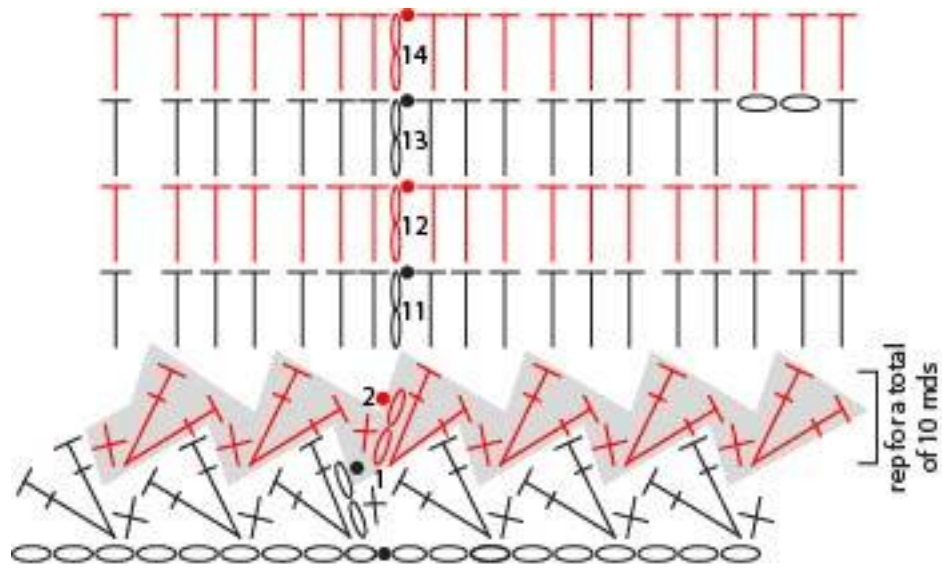
*Every effort has been made to produce accurate and complete instructions. We cannot be responsible for variance of individual knitters or crocheters, human error, or typographical mistakes.*

For thousands of free patterns, visit our website [www.LionBrand.com](http://www.LionBrand.com)

To order visit our website [www.lionbrand.com](http://www.lionbrand.com) or call: (800) 258-YARN (9276) any time!

Copyright ©1998-2016 Lion Brand Yarn Company, all rights reserved.

No pattern or other material may be reproduced -- mechanically, electronically, or by any other means, including photocopying - without written permission of Lion Brand Yarn Company.



KEY	
●	= slip stitch (sl st)
○	= chain (ch)
×	= single crochet (sc)
┆	= half double crochet (hdc)
┆	= double crochet (dc)