



Free Crochet Pattern
Lion Brand® Wool-Ease® Thick & Quick®
Textured Scarf
Pattern Number: L60305
Designed by Ubaldo Feliciano-Hernandez



SKILL LEVEL - Easy

SIZE

About 8 1/2 x 64 in. (21.5 x 162.5 cm)

MATERIALS

- Lion Brand® Wool-Ease® Thick & Quick® (Art. #640)
 - 609 Moonlight 3 balls
- Lion Brand® crochet hook size P-15 (10 mm)
- Lion Brand® large-eyed blunt needle



GAUGE

2 (sc, 2 dc) groups = about 3 1/2 in. (9 cm).
BE SURE TO CHECK YOUR GAUGE.

NOTES

1. Scarf is worked in one piece in an easy stitch pattern.
2. For those who find a visual helpful, we've included a stitch diagram.

SCARF

Ch 18.

Row 1: Work 2 dc in 3rd ch from hook (2 skipped ch count as beg ch), *sk next 2 ch, (sc, 2 dc) in next ch; rep from * 3 more times, sk next 2 ch, sc in last ch – you will have 15 sts in this row, consisting of 4 (sc, 2 dc) groups, 2 dc at beg of row and 1 sc at end of row. **Note:** 2 dc at beg and sc at end count as 1 more (sc, 2 dc) group.

Row 2: Ch 2 (does not count as a st), turn, 2 dc in first sc, *sk next 2 dc, (sc, 2 dc) in next sc; rep from * 3 more times, sk next 2 dc, sc in top of beg ch.
Rep Row 2 until piece measures about 64 in. (162.5 cm) from beg.
Fasten off.

FINISHING

Weave in ends.

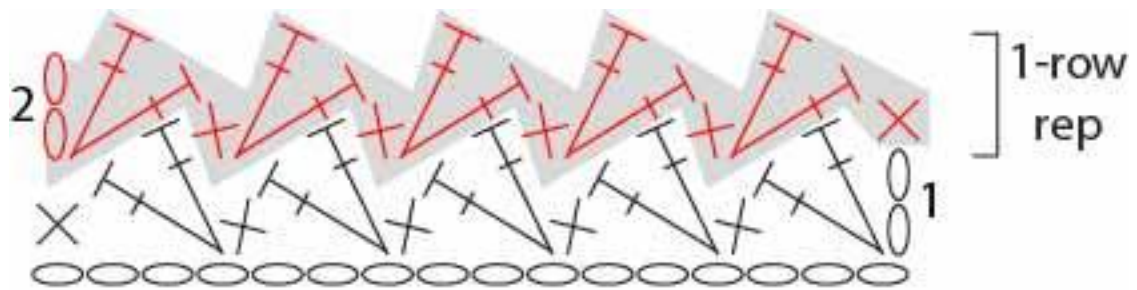
ABBREVIATIONS

beg = begin(ning)
ch = chain
dc = double crochet
rep = repeat
sc = single crochet
sk = skip
st(s) = stitch(es)

Every effort has been made to produce accurate and complete instructions. We cannot be responsible for variance of individual crafters, human error, or typographical mistakes.

For thousands of free patterns, visit our website www.LionBrand.com
To order visit our website www.lionbrand.com or call: (800) 258-YARN (9276) any time!
Copyright ©1998-2016 Lion Brand Yarn Company, all rights reserved.

No pattern or other material may be reproduced -- mechanically, electronically, or by any other means, including photocopying - without written permission of Lion Brand Yarn Company.



KEY	
○	= chain (ch)
×	= single crochet (sc)
┆ ┆	= double crochet (dc)