



Free Crochet Pattern
Lion Brand® Vanna's Style
Capri Cardigan
Pattern Number: L60226



SKILL LEVEL – Intermediate

SIZES

S (M, L, 1X)

Finished Bust About 33 (37, 41, 45) in. (84 (94, 104, 114.5) cm)

Finished Length About 26 (27, 27 1/2, 28 1/2) in. (66 (68.5, 70, 72.5) cm)

Note: Pattern is written for smallest size with changes for larger sizes in parentheses. When only one number is given, it applies to all sizes. To follow pattern more easily, circle all numbers pertaining to your size before beginning.

MATERIALS

- Lion Brand® Vanna's Style® (Art. #867)
 - 13 Red 5 (5, 6, 7) balls
- Lion Brand® crochet hook size G-6 (4.25 mm)
- Lion Brand® large-eyed blunt needle



GAUGE

20 sts + 6 1/2 rows = 4 in. (10 cm) over Rows 1-8 of yoke.

20 dc + 10 rows = about 4 in. (10 cm) over Rows 9 and 10 of yoke.

BE SURE TO CHECK YOUR GAUGE.

STITCH EXPLANATIONS

dtr (double treble/triple crochet) (Yarn over) 3 times, insert hook in indicated st and draw up a loop, (yarn over and draw through 2 loops on hook) 4 times.

3-dc Cl (3 double crochet cluster) Yarn over, insert hook in indicated st, yarn over and draw up a loop, yarn over and draw through 2 loops on hook (2 loops rem on hook), (yarn over, insert hook in *same* st, yarn over and draw up a loop, yarn over and draw through 2 loops on hook) twice; yarn over and draw through all 4 loops on hook.

3-tr Cl (3 treble crochet cluster) (Yarn over) 2 times, insert hook in indicated st and draw up a loop, (yarn over and draw through 2 loops on hook) 2 times (2 loops rem on hook), *(yarn over) 2 times, insert hook in *same* st and draw up a loop, (yarn over and draw through 2 loops on hook) 2 times; rep from * once more, yarn over and draw through all loops on hook.

2-dtr Cl (2 double treble crochet cluster) (Yarn over) 3 times, insert hook in indicated st and draw up a loop, (yarn over and draw through 2 loops on hook) 3 times, (yarn over) 3 times, insert hook in *same* st and draw up a loop, (yarn over and draw through 2 loops on hook) 3 times, yarn over and draw through all loops on hook.

3-dtr Cl (3 double treble crochet cluster) (Yarn over) 3 times, insert hook in indicated st and draw up a loop, (yarn over and draw through 2 loops on hook) 3 times, *(yarn over) 3 times, insert hook in *same* st and draw up a loop, (yarn over

For thousands of free patterns, visit our website www.LionBrand.com
To order visit our website www.lionbrand.com or call: (800) 258-YARN (9276) any time!
Copyright ©1998-2016 Lion Brand Yarn Company, all rights reserved.

No pattern or other material may be reproduced -- mechanically, electronically, or by any other means, including photocopying - without written permission of Lion Brand Yarn Company.

and draw through 2 loops on hook) 3 times; rep from * once more, yarn over and draw through all loops on hook.

NOTES

1. Cardigan is worked in one piece from the top down.
2. Cardigan is worked back and forth in rows. Piece is divided at underarms for body and sleeves, forming armholes. Body is divided again at top of side slits and fronts and back worked separately to lower edge. Sleeves are worked in rnds directly into armholes.
3. For those who find a visual helpful, we have included a stitch diagram of Rows 1-10 of yoke. Rows 9 and 10 of yoke are repeated throughout yoke and body of cardigan. Rows 9 and 10 of yoke, worked as rnds, are also used in sleeves.

CARDIGAN

Yoke

Ch 84 (92, 104, 116).

Row 1: Dc in 4th ch from hook (3 skipped ch count as first dc), *ch 3, sk next 3 ch, dc in next ch; rep from * to last 4 ch, ch 3, sk next 3 ch, 2 dc in last ch – you will have 23 (25, 28, 31) dc and 20 (22, 25, 28) ch-3 sps in this row.

Row 2: Ch 1, turn, sc in first st, *ch 3, 3-dc Cl in last sc made, sk next ch-3 sp, sc in next dc; rep from * to last ch-3 sp, ch 3, 3-dc Cl in last sc made, sk last ch-3 sp, sc in top of beg ch – 20 (22, 25, 28) Cl.

Row 3: Ch 3 (counts as dc), turn, dc in first sc, *ch 4, sk next Cl, dc in next sc; rep from * to last Cl, ch 4, sk last Cl, 2 dc in last sc – 20 (22, 25, 28) ch-4 sps.

Row 4: Ch 1, turn, sc in first dc, *ch 4, 3-tr Cl in last sc made, sk next ch-4 sp, sc in next dc; rep from * to last ch-4 sp, ch 4, 3-tr Cl in last sc made, sk last ch-4 sp, sc in top of beg ch – 20 (22, 25, 28) Cl.

Row 5: Ch 3 (counts as dc), turn, dc in first sc, *ch 5, sk next Cl, dc in next sc; rep from * to last Cl, ch 5, sk last Cl, 2 dc in last sc – 20 (22, 25, 28) ch-5 sps.

Row 6: Ch 1, turn, sc in first dc, *ch 5, 3-dtr Cl in last sc made, sk next ch-5 sp, sc in next dc; rep from * to last ch-5 sp, ch 5, 3-dtr Cl in last sc made, sk last ch-5 sp, sc in top of beg ch – 20 (22, 25, 28) Cl.

Row 7: Ch 3 (counts as dc), turn, dc in first sc, *ch 6, sk next Cl, dc in next sc; rep from * to last Cl, ch 6, sk last Cl, 2 dc in last sc – 20 (22, 25, 28) ch-6 sps.

Row 8: Ch 1, turn, sc in first dc, *ch 5, sc in next ch-6 sp, ch 5, sc in next dc; rep from * to last ch-6 sp, ch 5, sc in next ch-6 sp, ch 5, sc in top of beg ch – 40 (44, 50, 56) ch-5 sps.

Row 9: Ch 3 (counts as dc), turn, dc in first st, 5 dc in each ch-5 sp across to last st, 2 dc in last st – 204 (224, 254, 284) dc.

Row 10: Ch 1, turn, sc in first dc, sk next dc, *ch 5, sk next 5 dc, sc in sp before next dc; rep from * across to last 7 dc, ch 5, sk next 6 dc, sc in top of beg ch – 40 (44, 50, 56) ch-5 sps.

Rows 11-14: Rep Rows 9 and 10 twice.

Row 15: Ch 3 (counts as dc), turn, dc in first sc, 5 dc in each of next 6 (7, 8, 9) ch-5 sps, 10 dc in next ch-5 sp (increase made), 5 dc in each of next 6 (6, 7, 8)

ch-5 sps, 10 dc in next ch-5 sp, 5 dc in each of next 12 (14, 16, 18) ch-5 sps, 10 dc in next ch-5 sp, 5 dc in each of next 6 (6, 7, 8) ch-5 sps, 10 dc in next ch-5 sp, 5 dc in each of last 6 (7, 8, 9) ch-5 sps, 2 dc in last sc – 224 (244, 274, 304) dc.

Row 16: Rep Row 10 – 44 (48, 54, 60) ch-5 sps.

Row 17: Ch 3 (counts as dc), turn, dc in first sc, 5 dc in each of next 7 (8, 9, 10) ch-5 sps, 10 dc in next ch-5 sp, 5 dc in each of next 6 (6, 7, 8) ch-5 sps, 10 dc in next ch-5 sp, 5 dc in each of next 14 (16, 18, 20) ch-5 sps, 10 dc in next ch-5 sp, 5 dc in each of next 6 (6, 7, 8) ch-5 sps, 10 dc in next ch-5 sp, 5 dc in each of last 7 (8, 9, 10) ch-5 sps, 2 dc in last sc – 244 (264, 294, 324) dc.

Row 18: Rep Row 10 – 48 (52, 58, 64) ch-5 sps.

Divide for Body and Sleeves

Row 1: Ch 3 (counts as dc), turn, dc in first sc, 5 dc in each of next 7 (8, 9, 10) ch-5 sps. ch 11 (for underarm), sk next 10 (10, 11, 12) ch-5 sps, 5 dc in each of next 14 (16, 18, 20) ch-5 sps, ch 11 (for underarm), sk next 10 (10, 11, 12) ch-5 sps, 5 dc in each of next 7 (8, 9, 10) ch-5 sps. 2 dc in last sc – 144 (164, 184, 204) dc and 2 ch-11 sps.

Row 2: Ch 1, turn, sc in first dc, sk next dc, (ch 5, sk next 5 dc, sc in sp before next dc) 6 (7, 8, 9) times, ch 5, sk next 5 dc, sc in next ch, (ch 5, sk next 4 ch, sc in next ch) twice, (ch 5, sk next 5 dc, sc in sp before next dc) 13 (15, 17, 19) times, ch 5, sk next 5 dc, sc in next ch, (ch 5, sk next 4 ch, sc in next ch) twice, (ch 5, sk next 5 dc, sc in sp before next dc) 6 (7, 8, 9) times, ch 5, sk next 6 dc, sc in top of turning ch – 32 (36, 40, 44) ch-5 sps.

Rows 3-12: Rep Rows 9 and 10 of yoke 5 times.

Rows 13: Rep Row 9 of yoke – 164 (184, 204, 224) dc.

Row 14: Ch 5, turn, dtr in first dc (beg ch-5 and following dtr count as first 2 dtr-CI), sk next dc, *ch 5, sk next 5 dc, 2-dtr CI in sp before next dc; rep from * across to last 7 sts, ch 5, 2 dtr-CI in top of turning ch, turn – 32 (36, 40, 44) ch-5 sps and 33 (37, 41, 45) CI.

Rows 15-26 (28, 30, 32): Rep Rows 9 and 10 of yoke 6 (7, 8, 9) times.

LEFT FRONT

Divide for fronts and back, creating slits on the sides.

Row 1 (RS): Ch 3 (counts as dc), dc in first sc, 5 dc in next 8 (9, 10, 11) ch-5 sps, 2 dc in next sc; leave rem sts unworked – 44 (49, 54, 59) dc.

Row 2: Ch 1, turn, sc in first dc, sk next dc, *ch 5, sk next 5 dc, sc in sp before next dc; rep from * across to last 7 sts, ch 5, sk next 6 dc, sc in top of turning ch – 8 (9, 10, 11) ch-5 sps.

Rows 3-14: Rep Rows 9 and 10 of yoke 6 times.

Fasten off.

BACK

From RS, join yarn with a sl st in same sc as last 2 dc on Row 1 of Left Front.

Row 1: Ch 3 (counts as dc), dc in same sc, 5 dc in next 16 (18, 20, 22) ch-5 sps, 2 dc in next sc, turn; leave rem sts unworked – 84 (94, 104, 114) dc.

Row 2: Ch 1, turn, sc in first dc, sk next dc, *ch 5, sk next 5 dc, sc in sp before next dc; rep from * across to last 7 sts, ch 5, sk next 6 dc, sc in top of turning ch – 16 (18, 20, 22) ch-5 sps.

Rows 3-14: Rep Rows 9 and 10 of yoke 6 times. Fasten off.

RIGHT FRONT

From RS, join yarn with a sl st in same sc as last 2 dc on Row 1 of Back.

Row 1: Ch 3 (counts as dc), dc in same sc, 5 dc in next 8 (9, 10, 11) ch-5 sps, 2 dc in next sc – 44 (49, 54, 59) dc.

Row 2: Ch 1, turn, sc in first dc, sk next dc, *ch 5, sk next 5 dc, sc in sp before next dc; rep from * across to last 7 sts, ch 5, sk next 6 dc, sc in top of turning ch – 8 (9, 10, 11) ch-5 sps.

Rows 3-14: Rep Rows 9 and 10 of yoke 6 times. Fasten off.

SLEEVES

From RS, join yarn with a sl st in center ch of either underarm ch-11.

Rnd 1: Ch 3 (counts as dc), 5 dc in next ch-4 sp of underarm, 5 dc in each of next 10 (10, 11, 12) ch-5 sps, 5 dc in next ch-4 sp of underarm; join with sl st in top of beg ch-3 – 61 (61, 66, 71) dc.

Rnd 2: Ch 1, turn, sc in same st as joining, (ch 5, sk next 5 dc, sc in sp before next dc) 11 (11, 12, 13) times, ch 5, sk next 5 dc; join with sl st in first sc – 12 (12, 13, 14) ch-5 sps.

Rnd 3: Ch 3 (counts as dc), turn, 5 dc in each ch-5 sp around; join with sl st in top of beg ch-3, turn.

Rnd 4: Rep Rnd 2.

Rep Rnds 3 and 4 until sleeve measures about 15 in. (38 cm) or 1 in. (2.5 cm) less than desired length from underarm.

Fasten off.

Rep for 2nd sleeve, beg in center ch of other underarm ch-11.

FINISHING

Edging

From RS, join yarn with a sl st in first ch at beg of neck edge ready to work across opposite side of foundation ch.

Rnd 1: Ch 1, sc in same ch, *ch 3, 3-dc Cl in last sc made, sk next ch-3 sp, sc in next ch*; rep from * to * across neck edge; working along front edge, **ch 4, work 3-tr Cl in last sc made, sk next row, sc in side of sc in next row**; rep from ** to ** across, ending with sc in corner; working across lower edge, ***ch 5, 3-dtr Cl in last sc made, sk next ch-5 sp, sc in next sc***; rep from *** to *** across lower edge to first slit, rep from ** to ** up slit, ending with sc in center st of slit; rep from ** to ** down other side of slit; rep from *** to *** across lower edge to next slit; rep from ** to ** up slit, ending with sc in center st of slit; rep from ** to ** down other side of slit; rep from *** to *** across rem lower edge, ending with sc in corner; rep from ** to ** along front edge; join with sl st in first sc.

For thousands of free patterns, visit our website www.LionBrand.com

To order visit our website www.lionbrand.com or call: (800) 258-YARN (9276) any time!

Copyright ©1998-2016 Lion Brand Yarn Company, all rights reserved.

No pattern or other material may be reproduced -- mechanically, electronically, or by any other means, including photocopying - without written permission of Lion Brand Yarn Company.

Fasten off.

Weave in ends.

ABBREVIATIONS

beg = begin(ning)(s)

ch = chain

ch-sp(s) = chain space(s) previously made

dc = double crochet

rem = remain(ing)(s)

rep = repeat

RS = right side

sc = single crochet

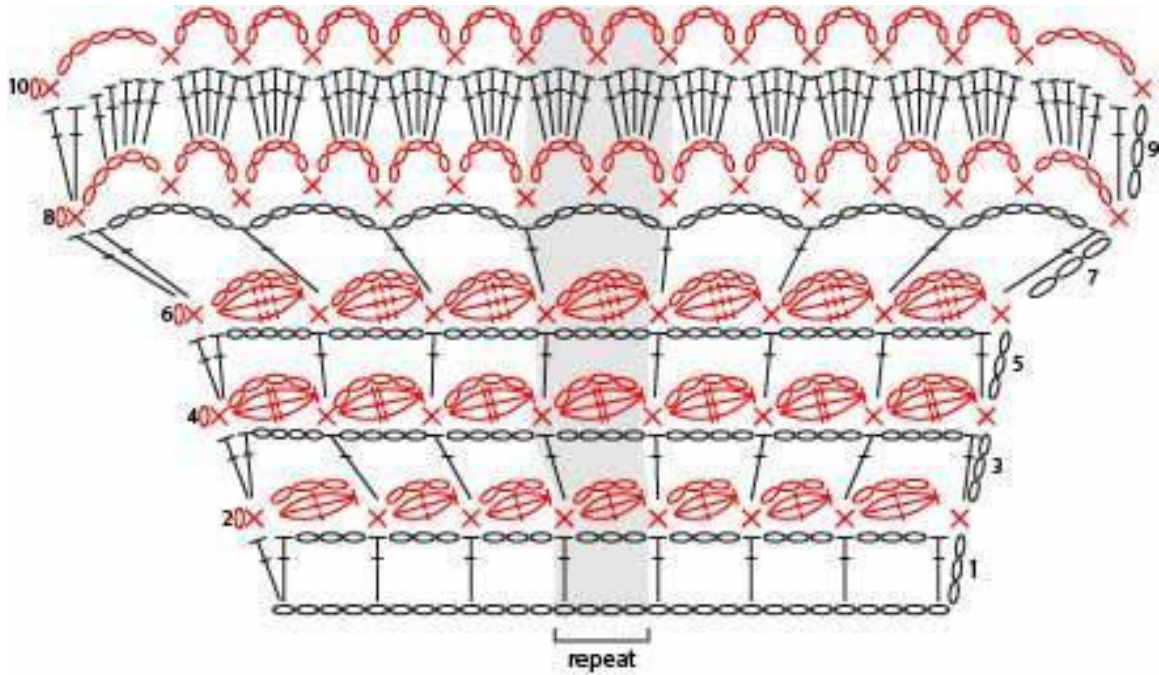
sk = skip

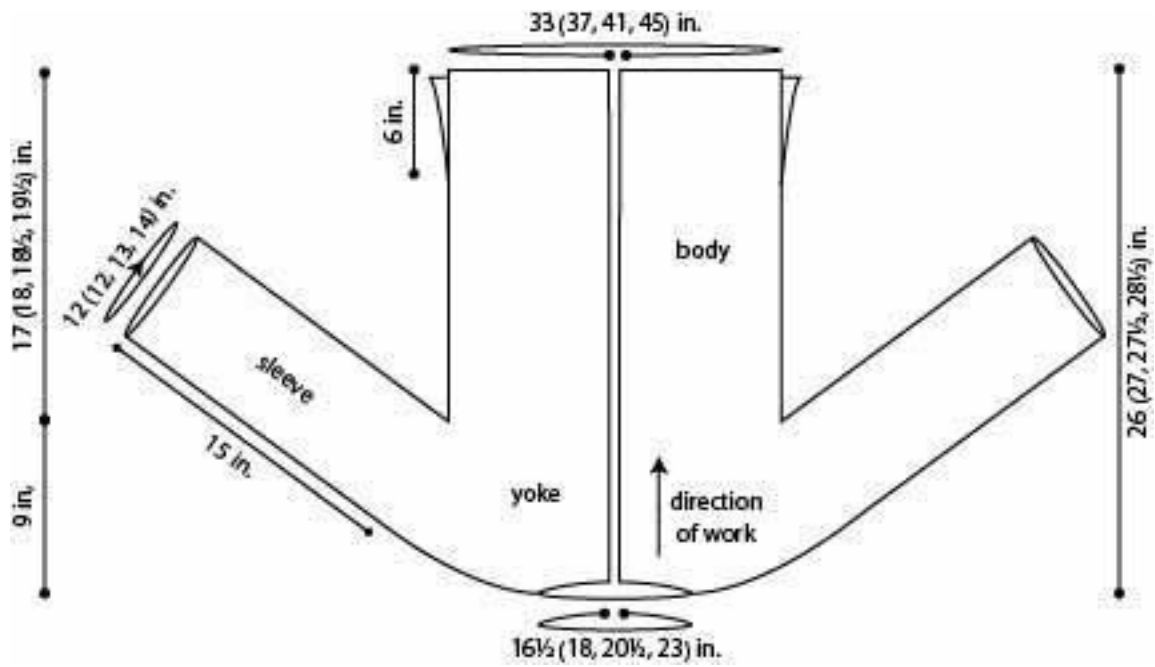
sp = space

sl st = slip stitch

st(s) = stitch(es)

Every effort has been made to produce accurate and complete instructions. We cannot be responsible for variance of individual crafters, human error, or typographical mistakes.





For thousands of free patterns, visit our website www.LionBrand.com
To order visit our website www.lionbrand.com or call: (800) 258-YARN (9276) any time!
Copyright ©1998-2016 Lion Brand Yarn Company, all rights reserved.
No pattern or other material may be reproduced -- mechanically, electronically, or by any other means,
including photocopying - without written permission of Lion Brand Yarn Company.

