



***Free Knitting Pattern***  
**Lion Brand® Fishermen's Wool®**  
**Chestnut Street Scarf**  
Pattern Number: L60396  
*Designed by Alexandra Davidoff*



## **SKILL LEVEL** – Intermediate

### **SIZES**

About 8 x 65 in. (20.5 x 165 cm)

### **MATERIALS**

- Lion Brand® Fishermen's Wool® (Art. #150)
  - 123 Oatmeal 1 skein
- Lion Brand® knitting needles size 8 (5 mm)
- Lion Brand® cable needle
- Lion Brand® large-eyed blunt needle



### **GAUGE**

27 sts + 22 rows = about 4 in. (10 cm) in Cable patterns.  
BE SURE TO CHECK YOUR GAUGE.

### **STITCH EXPLANATIONS**

**1/1 RC (1 over 1 right cross)** Slip 1 st to cable needle and hold in back, k1, then k1 from cable needle.

**1/1 LPC (1 over 1 left purl cross)** Slip 1 st to cable needle and hold in front, p1, then k1 from cable needle.

**1/1 RPC (1 over 1 right purl cross)** Slip 1 st to cable needle and hold in back, k1, then p1 from cable needle.

**2/2 LC (2 over 2 left cross)** Slip 2 sts to cable needle and hold in front, k2, then k2 from cable needle.

**2/2 RC (2 over 2 right cross)** Slip 2 sts to cable needle and hold in back, k2, then k2 from cable needle.

**3/3 LC (3 over 3 left cross)** Slip 3 sts to cable needle and hold in front, k3, then k3 from cable needle.

**3/3 RC (3 over 3 right cross)** Slip 3 sts to cable needle and hold in back, k3, then k3 from cable needle.

**3/5 LC (3 over 5 left cross)** Slip 3 sts to cable needle and hold in front, k5, then k3 from cable needle.

**3/5 RC (3 over 5 right cross)** Slip 5 sts to cable needle and hold in back, k3, then k5 from cable needle.

**2/2/4 LC (2 over 2 left cross over 4)** Sl 4 sts to cable needle and hold to front, k4, sl 4 sts on cable needle back to left-hand needle, sl next 2 sts to cable needle and hold to front, k2, then k2 from cable needle.

**2/2/4 RC (2 over 2 right cross over 4)** Sl 6 sts to first cable needle and hold to back, k2, sl last 2 sts on cable needle back to left-hand needle and knit them, then k4 from cable needle.

For thousands of free patterns, visit our website [www.LionBrand.com](http://www.LionBrand.com)

To order visit our website [www.lionbrand.com](http://www.lionbrand.com) or call: (800) 258-YARN (9276) any time!

Copyright ©1998-2016 Lion Brand Yarn Company, all rights reserved.

No pattern or other material may be reproduced -- mechanically, electronically, or by any other means, including photocopying - without written permission of Lion Brand Yarn Company.

## NOTES

1. Scarf is worked back and forth in rows in multiple cable patterns.
2. Cable patterns can be worked by following the written instructions or the charts. Read RS rows of charts from right to left and WS rows from left to right.

## SCARF

Cast on 55 sts.

### Cable Ribbing

**Row 1 (RS):** 3/3 RC, p2, 1/1 RC, p2, 1/1 RPC, 1/1 LPC, p3, k3, p3, k2, p1, k2, p3, k3, p3, 1/1 RPC, 1/1 LPC, p2, 1/1 RC, p2, 3/3 LC.

**Row 2:** P6, k2, p2, k2, p1, k2, p1, k3, p3, k3, p2, k1, p2, k3, p3, k3, p1, k2, p1, k2, p2, k2, p6.

**Row 3:** K6, p2, 1/1 RC, p2, 1/1 LPC, 1/1 RPC, p3, k3, p3, k2, p1, k2, p3, k3, p3, 1/1 LPC, 1/1 RPC, p2, 1/1 RC, p2, k6.

**Row 4:** P6, k2, p2, k3, p2, k4, p3, k3, p2, k1, p2, k3, p3, k4, p2, k3, p2, k2, p6.

**Rows 5-8:** Rep Rows 1-4.

**Rows 9 and 10:** Rep Rows 1 and 2.

### Main Cable Pattern

**Row 1 (RS):** K6, p2, 1/1 RC, p2, 1/1 LPC, 1/1 RPC, p3, 3/5 RC, p1, 3/5 LC, p3, 1/1 LPC, 1/1 RPC, p2, 1/1 RC, p2, k6.

**Row 2:** P6, k2, p2, k3, p2, k4, p3, (k1, p4) twice, k1, p3, k4, p2, k3, p2, k2, p6.

**Row 3:** 3/3 RC, p2, 1/1 RC, p2, 1/1 RPC, 1/1 LPC, p3, k3, (p1, k4) twice, p1, k3, p3, 1/1 RPC, 1/1 LPC, p2, 1/1 RC, p2, 3/3 LC.

**Row 4:** P6, k2, p2, (k2, p1) twice, k3, p3, (k1, p4) twice, k1, p3, k3, (p1, k2) twice, p2, k2, p6.

**Row 5:** K6, p2, 1/1 RC, p2, 1/1 LPC, 1/1 RPC, p3, k3, p1, 2/2 RC, p1, 2/2 LC, p1, k3, p3, 1/1 LPC, 1/1 RPC, p2, 1/1 RC, p2, k6.

**Rows 6-13:** Rep Row 2-5 of Main Cable pattern twice.

**Rows 14-16:** Rep Rows 2-4 of Main Cable pattern.

**Row 17:** K6, p2, 1/1 RC, p2, 1/1 LPC, 1/1 RPC, p3, 2/2/4 RC, p1, 2/2/4 LC, p3, 1/1 LPC, 1/1 RPC, p2, 1/1 RC, p2, k6.

**Row 18:** P6, k2, p2, k3, p2, k4, p4, (k1, p3) twice, k1, p4, k4, p2, k3, p2, k2, p6.

**Row 19:** 3/3 RC, p2, 1/1 RC, p2, 1/1 RPC, 1/1 LPC, p3, k4, (p1, k3) twice, p1, k4, p3, 1/1 RPC, 1/1 LPC, p2, 1/1 RC, p2, 3/3 LC.

**Row 20:** P6, k2, p2, (k2, p1) twice, k3, p4, (k1, p3) twice, k1, p4, k3, (p1, k2) twice, p2, k2, p6.

**Row 21:** K6, p2, 1/1 RC, p2, 1/1 LPC, 1/1 RPC, p3, 2/2 RC, (p1, k3) twice, p1, 2/2 LC, p3, 1/1 LPC, 1/1 RPC, p2, 1/1 RC, p2, k6.

**Rows 22-29:** Rep Rows 18-21 of Main Cable pattern twice.

**Rows 30-32:** Rep Rows 18-20 of Main Cable pattern.

**Rows 33-320:** Rep Rows 1-32 of Main Cable pattern for 9 more times.

**Rows 321-338:** Rep Rows 1-18 of Main Cable pattern.

For thousands of free patterns, visit our website [www.LionBrand.com](http://www.LionBrand.com)

To order visit our website [www.lionbrand.com](http://www.lionbrand.com) or call: (800) 258-YARN (9276) any time!

Copyright ©1998-2016 Lion Brand Yarn Company, all rights reserved.

No pattern or other material may be reproduced -- mechanically, electronically, or by any other means, including photocopying - without written permission of Lion Brand Yarn Company.

### **Cable Ribbing**

**Rows 1-10:** Rep Rows 1-10 of Cable Ribbing.  
Bind off.

### **FINISHING**

Weave in ends.

### **ABBREVIATIONS**

k = knit

p = purl

rep = repeat

RS = right side

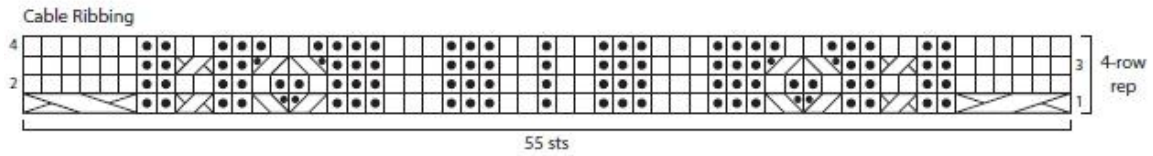
sl = slip

st(s) = stitch(es)









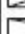




WS = wrong side

*Every effort has been made to produce accurate and complete instructions. We cannot be responsible for variance of individual crafters, human error, or typographical mistakes.*

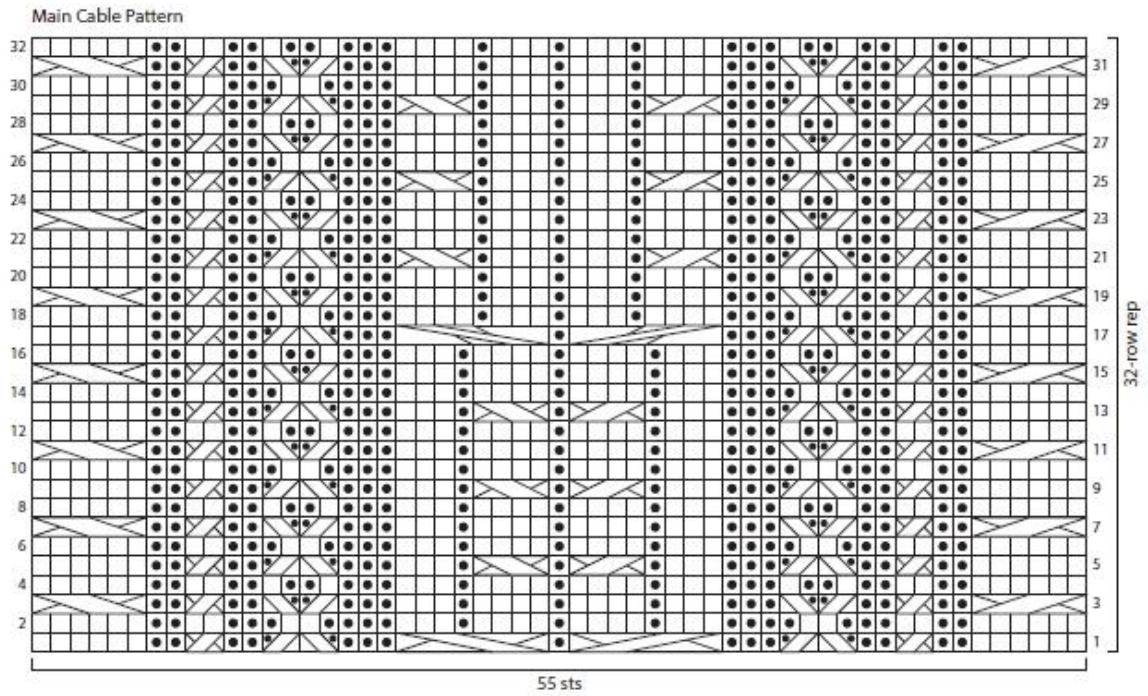
Lion Brand® Fishermen's Wool® Chestnut Street Scarf  
Pattern Number: L60396



For thousands of free patterns, visit our website [www.LionBrand.com](http://www.LionBrand.com)  
To order visit our website [www.lionbrand.com](http://www.lionbrand.com) or call: (800) 258-YARN (9276) any time!  
Copyright ©1998-2016 Lion Brand Yarn Company, all rights reserved.  
No pattern or other material may be reproduced -- mechanically, electronically, or by any other means, including  
photocopying - without written permission of Lion Brand Yarn Company.

Key	
	knit on RS, purl on WS
	purl on RS, knit on WS
	1/1 RC (1 over 1 right cross)
	1/1 LPC (1 over 1 left purl cross)
	1/1 RPC (1 over 1 right purl cross)
	2/2 LC (2 over 2 left cross)
	2/2 RC (2 over 2 right cross)
	3/3 LC (3 over 3 left cross)
	3/3 RC (3 over 3 right cross)
	2/2/4 LC (2 over 2 left cross over 4)
	2/2/4 RC (2 over 2 right cross over 4)
	3/5 LC (3 over 5 left cross)
	3/5 RC (3 over 5 right cross)

Lion Brand® Fishermen's Wool® Chestnut Street Scarf  
Pattern Number: L60396



For thousands of free patterns, visit our website [www.LionBrand.com](http://www.LionBrand.com)  
To order visit our website [www.lionbrand.com](http://www.lionbrand.com) or call: (800) 258-YARN (9276) any time!  
Copyright ©1998-2016 Lion Brand Yarn Company, all rights reserved.  
No pattern or other material may be reproduced -- mechanically, electronically, or by any other means, including photocopying - without written permission of Lion Brand Yarn Company.