



Free Crochet Pattern
Lion Brand® Mandala®
One Ball Scarf
Pattern Number: L60244
Designed by Arabia Temple



SKILL LEVEL – Easy

SIZE

About 7 x 66 in. (18 x 167.5 cm)

MATERIALS

- Lion Brand® Mandala® (Art. #525)
 - 216 Sphinx 1 ball
- Lion Brand® crochet hook size I-9 (5.5 mm)
- Lion Brand® large-eyed blunt needle



GAUGE

5 (sc, 2 dc) groups = about 4 in. (10 cm).
BE SURE TO CHECK YOUR GAUGE.

NOTES

1. Scarf is worked in one piece in rows of (sc, 2 dc) groups.
2. For those who find a visual helpful, we've included a stitch diagram.

SCARF

Ch 30.

Row 1 (RS): Work 2 dc in 3rd ch from hook (2 skipped ch count as beg ch), *sk next 2 ch, (sc, 2 dc) in next ch; rep from * 7 more times, sk next 2 ch, sc in last ch – you will have 27 sts in this row, consisting of 8 (sc, 2 dc) groups, 2 dc at beg of row and 1 sc at end of row. **Note:** 2 dc at beg and 1 sc at end count as 1 more (sc, 2 dc) group.

Row 2: Ch 2 (counts as beg ch), turn, 2 dc in first sc, *sk next 2 dc, (sc, 2 dc) in next sc; rep from * 7 more times, sk last 2 dc, sc in top of beg ch.

Rep Row 2 until almost all yarn has been used.

Fasten off.

FINISHING

Weave in ends.

ABBREVIATIONS

beg = begin(ning)

ch = chain

dc = double crochet

rep = repeat

RS = right side

sc = single crochet

sk = skip

st(s) = stitch(es)

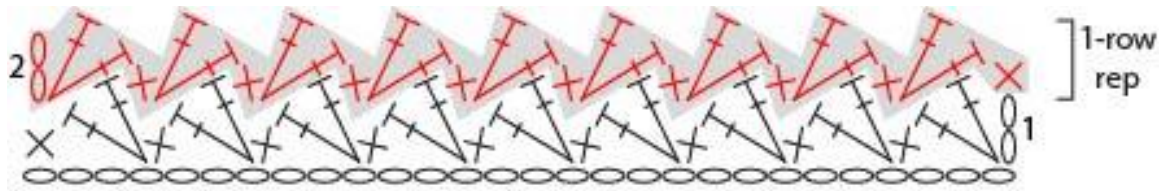
Every effort has been made to produce accurate and complete instructions. We cannot be responsible for variance of individual crafters, human error, or typographical mistakes.

For thousands of free patterns, visit our website www.LionBrand.com

To order visit our website www.lionbrand.com or call: (800) 258-YARN (9276) any time!

Copyright ©1998-2017 Lion Brand Yarn Company, all rights reserved.

No pattern or other material may be reproduced -- mechanically, electronically, or by any other means, including photocopying - without written permission of Lion Brand Yarn Company.



KEY	
○	= chain (ch)
×	= single crochet (sc)
⊥	= double crochet (dc)