



Free Crochet Pattern
Lion Brand® Landscapes®
Drawstring Bun Hat
Pattern Number: L60415B
Designed by Teresa Chorzepa



SKILL LEVEL – Easy

SIZE

Finished Circumference About 20 in. (51 cm), will stretch to fit a range of sizes
Finished Height About 8 in. (20.5 cm)

MATERIALS

- Lion Brand® Landscapes® (Art. #545)
 - 201 Boardwalk 1 ball
- Lion Brand® crochet hook size K-10.5 (6.5 mm)
- Lion Brand® large-eyed blunt needle



GAUGE

5 squares = about 8 1/4 in. (21 cm) over
Crosshatch stitch pattern.
BE SURE TO CHECK YOUR GAUGE.

NOTES

1. Hat is made from a rectangle worked in a Crosshatch stitch pattern.
2. Ends of rectangle are sewn together. Ties are woven through sts of last row to gather top of Hat slightly, leaving a top opening.
3. The Crosshatch stitch pattern is made up of rows of (sc, ch 3, 3 dc) "squares". The squares tilt in alternate directions.
4. For those who find a visual helpful, we've included a stitch diagram.

HAT

Beg at lower edge of Hat, ch 85.

Row 1: Work 2 dc in 4th ch from hook, sk next 3 ch, sc in next ch (beg square made), *ch 3, dc in next 3 ch, sk next 3 ch, sc in next ch (square made); rep from * across – 12 squares.

Rows 2-14 (Crosshatch stitch pattern): Ch 3 (counts as dc), turn, 2 dc in first sc, *sk next 3 dc, (sc, ch 3, 2 dc) in next ch-3 sp, dc in next sc; rep from * to beg ch, sc in top of beg ch.

Fasten off, leaving a long yarn tail.

With yarn tail, sew side edges together.

Ties (make 2)

Work chains for about 30 in. (76 cm).

Fasten off.

Hold Ties together and weave them in and out through spaces between "squares" of last row. Pull ends of Ties to gather top of Hat slightly, leaving an opening. Tie ends into a bow.

For thousands of free patterns, visit our website www.LionBrand.com

To order visit our website www.lionbrand.com or call: (800) 258-YARN (9276) any time!

Copyright ©1998-2017 Lion Brand Yarn Company, all rights reserved.

No pattern or other material may be reproduced -- mechanically, electronically, or by any other means, including photocopying - without written permission of Lion Brand Yarn Company.

FINISHING

Weave in ends.

ABBREVIATIONS

beg = begin(ning)(s)

ch = chain

ch-sp(s) = chain space(s) previously made

dc = double crochet

rep = repeat

sc = single crochet

sk = skip

st(s) = stitch(es)

Every effort has been made to produce accurate and complete instructions. We cannot be responsible for variance of individual crafters, human error, or typographical mistakes.

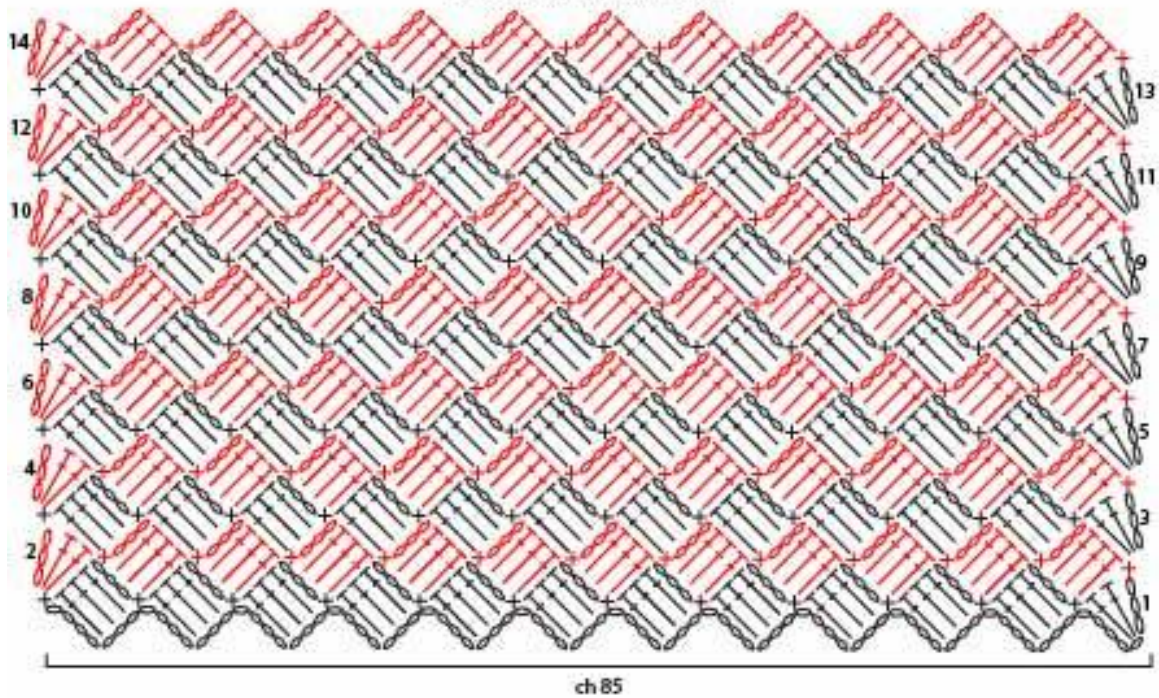
For thousands of free patterns, visit our website www.LionBrand.com

To order visit our website www.lionbrand.com or call: (800) 258-YARN (9276) any time!

Copyright ©1998-2017 Lion Brand Yarn Company, all rights reserved.

No pattern or other material may be reproduced -- mechanically, electronically, or by any other means, including photocopying - without written permission of Lion Brand Yarn Company.

Crosshatch stitch pattern



KEY	
○	- chain (ch)
×	- single crochet (sc)
⊥	- double crochet (dc)