



***Free Crochet Pattern***  
**Lion Brand® New Basic 175®**  
**Constance Cowl**  
Pattern Number: L60206  
*Designed by Teresa Chorzepa*



## **SKILL LEVEL** – Easy

### **SIZE**

**Finished Circumference** About 31 in. (78.5 cm)

**Finished Height** About 12 in. (30.5 cm)

### **MATERIALS**

- Lion Brand® New Basic 175® (Art. #675)
  - 106 Ice 2 balls
- Lion Brand® crochet hook size I-9 (5.5 mm)
- Lion Brand® large-eyed blunt needle



### **GAUGE**

14 sts = about 4 in. (10 cm) and 8 rnds = about 3 in. (7.5 cm) in pattern of Rnds 3-10.

**BE SURE TO CHECK YOUR GAUGE.**

### **STITCH EXPLANATION**

**Cl (5 double crochet cluster)** Yarn over, insert hook in indicated st, yarn over and draw up a loop, yarn over and draw through 2 loops on hook (2 loops rem on hook), (yarn over, insert hook in same st, yarn over and draw up a loop, yarn over and draw through 2 loops on hook) 4 times (6 loops rem on hook), yarn over, draw through all loops on hook.

### **NOTES**

1. Cowl is worked in joined and turned rnds. Last st of each rnd is joined to first st of rnd with sl st. After Rnd 2, turn at beg of each rnd.
2. If you find it difficult to join the beg ch into a ring without twisting the ch, Rnd 1 can be worked as a row, then joined into a rnd, as follows: Leaving a long beg tail, ch 109, sc in 2nd ch from hook and in each ch across; join with sl st in first sc – you will have 108 sc at the end of this row/rnd. Use beg tail to sew gap at base of first row closed. Proceed to Rnd 2.
3. For those who find a visual helpful, we've included a stitch diagram.

**Note:** The following corrections have been incorporated into the pattern below. We are highlighting the corrections separately here so that if you have printed out an earlier version of the pattern you'll know what was changed.

**CORRECTIONS:** (applied Sept. 14th, 2017)

### **COWL**

...

**Rnds 11 12-26:** Rep Rnds 3-10 twice.

For thousands of free patterns, visit our website [www.LionBrand.com](http://www.LionBrand.com)

To order visit our website [www.lionbrand.com](http://www.lionbrand.com) or call: (800) 258-YARN (9276) any time!

Copyright ©1998-2017 Lion Brand Yarn Company, all rights reserved.

No pattern or other material may be reproduced -- mechanically, electronically, or by any other means, including photocopying - without written permission of Lion Brand Yarn Company.

## **COWL**

Ch 108; join with sl st in first ch to form a ring.

**Rnd 1 (RS):** Ch 1, sc in same ch as joining and in each ch around; join with sl st in first sc – you will have 108 sc in this rnd.

**Rnd 2 (RS):** Ch 3 (counts as hdc, ch 1), sk next st, hdc in next st, \*ch 1, sk next st, hdc in next st; rep from \* to last st, ch 1, sk last st; join with sl st in 2nd ch of beg ch – 54 hdc and 54 ch-1 sps.

**Rnd 3 (WS):** Ch 1, turn, sc in same ch as joining, Cl in first ch-1 sp, \*sc in next hdc, sc in next ch-1 sp, sc in next hdc, Cl in next ch-1 sp; rep from \* to last hdc, sc in last hdc, sc in beg ch-sp; join with sl st in first sc – 81 sc and 27 Cl.

**Rnd 4:** Ch 3 (counts as hdc, ch 1), turn, hdc in sc before first Cl, \*ch 1, sk next Cl, hdc in next sc, ch 1, sk next sc, hdc in next sc; rep from \* to last Cl, ch 1, sk last Cl; join with sl st in 2nd ch of beg ch – 54 hdc and 54 ch-1 sps.

**Rnd 5:** Turn, (sl st, ch 1, sc) in first ch-1 sp, \*ch 1, sk next hdc, sc in next ch-1 sp; rep from \* around working last sc in beg ch-sp, ch 1; join with sl st in first sc – 54 sc and 54 ch-1 sps.

**Rnd 6:** Turn, sl st in first ch-1 sp, ch 3 (counts as hdc, ch 1), sk next sc, hdc in next ch-1 sp, \*ch 1, sk next sc, hdc in next ch-1 sp; rep from \* to last sc, ch 1, sk last sc; join with sl st in 2nd ch of beg ch.

**Rnd 7:** Ch 1, turn, sc in same ch as joining, \*sc in next ch-1 sp, sc in next hdc, Cl in next ch-1 sp, sc in next hdc; rep from \* to last 2 ch-sps, sc in next ch-1 sp, sc in next hdc, Cl in beg ch-sp; join with sl st in first sc.

**Rnd 8:** Ch 3 (counts as hdc, ch 1), turn, sk first Cl, hdc in next sc, \*ch 1, sk next sc, hdc in next sc, ch 1, sk next Cl, hdc in next sc; rep from \* to last sc, ch 1, sk last sc; join with sl st in 2nd ch of beg ch.

**Rnds 9 and 10:** Rep Rnds 5 and 6.

**Rnds 11-26:** Rep Rnds 3-10 twice.

**Rnds 27-32:** Rep Rnds 3-8.

**Rnd 33:** Ch 1, sc in each st and ch-1 sp around; join with sl st in first sc – 108 sc. Fasten off.

## **FINISHING**

Weave in ends.

## **ABBREVIATIONS**

beg = begin(ning)

ch = chain

ch-sp(s) = chain space(s) previously made

hdc = half double crochet

rep = repeat

rnd(s) = round(s)

RS = right side

sc = single crochet

sk = skip

sl st = slip stitch

st(s) = stitch(es)

WS = wrong side

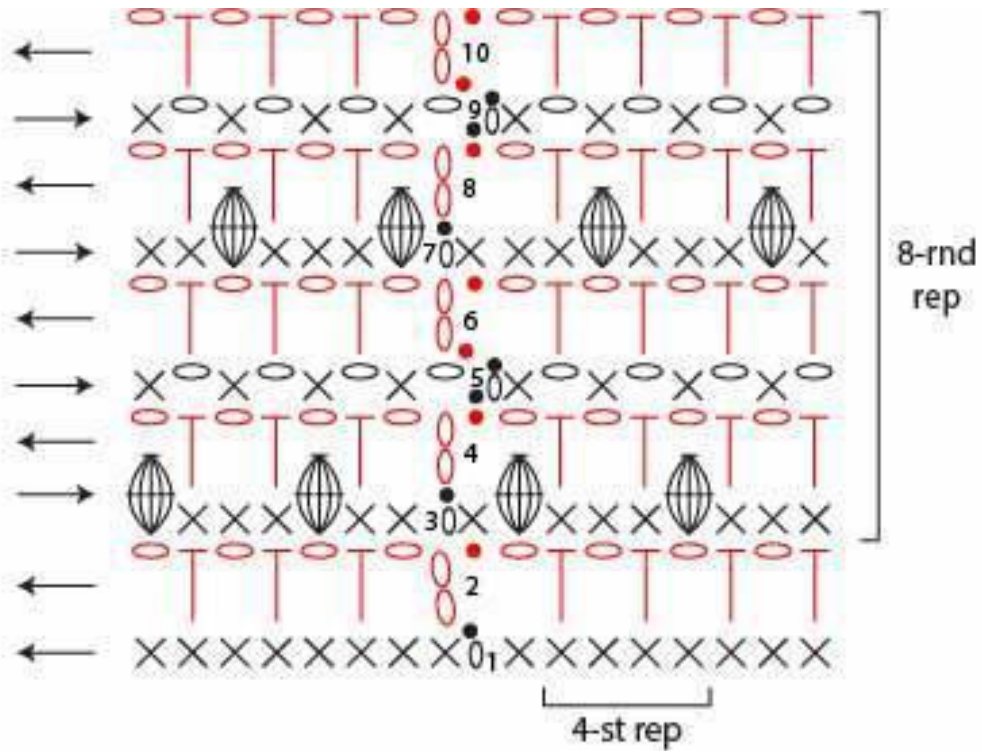
*Every effort has been made to produce accurate and complete instructions. We cannot be responsible for variance of individual crafters, human error, or typographical mistakes.*


For thousands of free patterns, visit our website [www.LionBrand.com](http://www.LionBrand.com)

To order visit our website [www.lionbrand.com](http://www.lionbrand.com) or call: (800) 258-YARN (9276) any time!

Copyright ©1998-2017 Lion Brand Yarn Company, all rights reserved.

No pattern or other material may be reproduced -- mechanically, electronically, or by any other means, including photocopying - without written permission of Lion Brand Yarn Company.



KEY			
●	= slip stitch (sl st)		= 5-double crochet cluster (Cl)
○	= chain (ch)	←	= direction rnd is worked
×	= single crochet (sc)		
┆	= half double crochet (hdc)		