



Free Knitting Pattern
Lion Brand® Hometown USA®
Sampler Lapghan
Pattern Number: L60231
Designed by Lisa Carnahan



SKILL LEVEL – 3

SIZE

About 36 x 48 in. (91.5 x 122 cm)

MATERIALS

- Lion Brand® Hometown USA® (Art. #135)
 - 098 Houston Cream 2 balls (A)
 - 111 San Diego Navy 4 balls (B)
 - 105 Detroit Blue 4 balls (C)
 - 302 Aspen Tweed 4 balls (D)
- Lion Brand® knitting needles size 13 (9 mm)
- Lion Brand® cable needle
- Lion Brand® large-eyed blunt needle



GAUGE

1 Square = about 12 x 12 in. (30.5 x 30.5 cm).

BE SURE TO CHECK YOUR GAUGE.

STITCH EXPLANATIONS

3/3 RC (3 over 3 right cross) Slip 3 sts to cable needle and hold in back, k3, then k3 from cable needle.

yo (yarn over)

An increase that also creates a small decorative hole (eyelet) in the fabric, worked as follows:

1. Bring yarn to front, between the needles.
2. Take yarn to back, over the right needle. This creates the new st. You are now ready to proceed with the next st as instructed.

NOTES

1. 12 Squares are worked - 3 each of Cable Square, Eyelet Square, Textured Blocks Square, and 3 Color Slip Stitch Square.
2. The Squares are sewn together following the Assembly Diagram to make the Lapghan.
3. Charts are included to clarify the stitch patterns used on the Squares.

CABLE SQUARES (make 3 – 1 each with B, C, and D)

Cast on 34 sts.

Set Up Row (WS): K7, p6, k8, p6, k7.

Row 1 (RS): K6, (p1, k6) 4 times.

Row 2: K7, p6, k8, p6, k7.

Row 3: K6, (p1, 3/3 RC, p1, k6) twice.

Row 4: K7, p6, k8, p6, k7.

Row 5: K6, (p1, k6) 4 times.

For thousands of free patterns, visit our website www.LionBrand.com

To order visit our website www.lionbrand.com or call: (800) 258-YARN (9276) any time!

Copyright ©1998-2017 Lion Brand Yarn Company, all rights reserved.

No pattern or other material may be reproduced -- mechanically, electronically, or by any other means, including photocopying - without written permission of Lion Brand Yarn Company.

Rows 6 and 7: Rep Rows 4 and 5.
Row 8: K7, p6, k8, p6, k7.
Rows 9-32: Rep Rows 1-8 three more times.
Rows 33-38: Rep Rows 1-6.
Bind off.

EYELET SQUARES (make 3 – 1 each with B, C, and D)

Cast on 27 sts.
Set Up Row (WS): Knit.
Row 1 (RS): Knit.
Row 2: K2, p23, k2.
Row 3: K4, (yo, k2tog, k4) 3 times, yo, k2tog, k3.
Row 4: Rep Row 2.
Rows 5 and 6: Rep Rows 1 and 2.
Row 7: K7, (yo, k2tog, k4) 3 times, k2.
Row 8: K2, p23, k2.
Rows 9-32: Rep Rows 1-8 three more times.
Rows 33-37: Rep Rows 1-5.
Row 38: Knit.
Bind off.

TEXTURED BLOCKS SQUARES (make 3 – 1 each with B, C, and D)

Cast on 26 sts.
Set Up Row (WS): Purl.
Row 1 (RS): P5, (k2, p5) 3 times.
Row 2: Purl.
Rows 3-8: Rep Rows 1 and 2 three more times.
Row 9: K5, (p2, k5) 3 times.
Row 10: Purl.
Rows 11 and 12: Rep Rows 9 and 10.
Row 13-36: Rep Rows 1-12 two more times.
Rows 37-44: Rep Rows 1-8.
Bind off.

3 COLOR SLIP STITCH SQUARES (make 3)

Notes:

1. When slipping sts, slip as if to purl.
2. With yarn in front (wyif) refers to the side of the work facing you as you work the row. To move yarn from front to back or back to front, bring yarn between needles. Take care not to wrap yarn over a needle, this could create an additional st.
3. Each row is worked with a single yarn color and yarn color is changed only at beginning of rows.
4. The first st in every row of chart indicates the yarn color to use for the entire row. The slipped sts are shown in the yarn color used in the previous row.

With A, cast on 27 sts.

Set Up Row (WS): With A, k1, p25, k1.

Row 1 (RS): With B, k1, *sl 1 wyif, k1; rep from * to end.

Row 2: With C, k1, p25, k1.

Row 3: With A, k2, *sl 1 wyif, k1; rep from * to last st, k1.

Row 4: With B, k1, p25, k1.

Row 5: With C, k1, *sl 1 wyif, k1; rep from * to end.

Row 6: With A, k1, p25, k1.

Row 7: With A, knit.

Row 8: With A, k1, p25, k1.

Row 9: With B, k2, *sl 1 wyif, k1; rep from * to last st, k1.

Row 10: With C, k1, p25, k1.

Row 11: With A, k1, *sl 1 wyif, k1; rep from * to end.

Row 12: With B, k1, p25, k1.

Row 13: With C, k2, *sl 1 wyif, k1; rep from * to last st, k1.

Row 14: With A, k1, p25, k1.

Row 15: With A, knit.

Row 16: With A, k1, p25, k1.

Rows 17-32: Rep Rows 1-16.

Rows 33-39: Rep Rows 1-7.

Bind off as if to purl.

FINISHING

Following diagram, and with yarn colors as desired, whip stitch Squares into 3 strips of 4 Squares each.

Whip stitch the strips together to make the Lapghan.

Weave in ends.

ABBREVIATIONS

k = knit

k2tog = knit 2 stitches together

p = purl

rep = repeat

RS = right side

sl = slip

st(s) = stitch(es)

tog = together

WS = wrong side

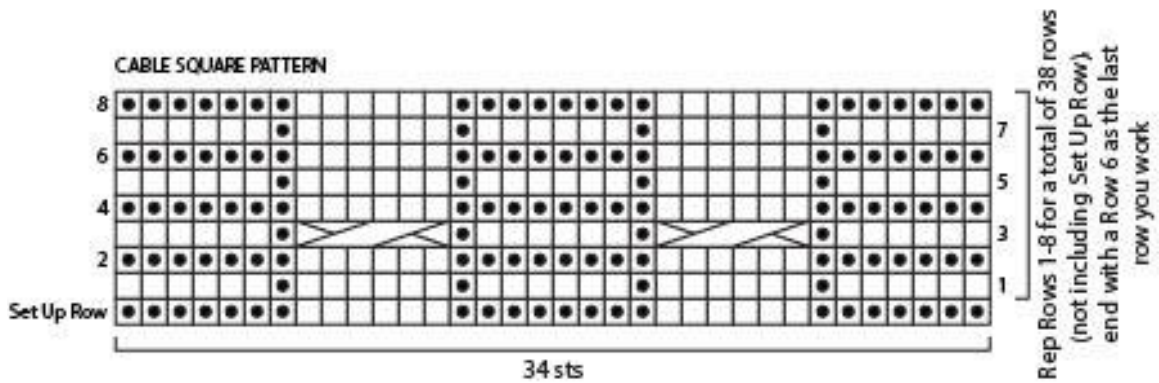
Every effort has been made to produce accurate and complete instructions. We cannot be responsible for variance of individual crafters, human error, or typographical mistakes.

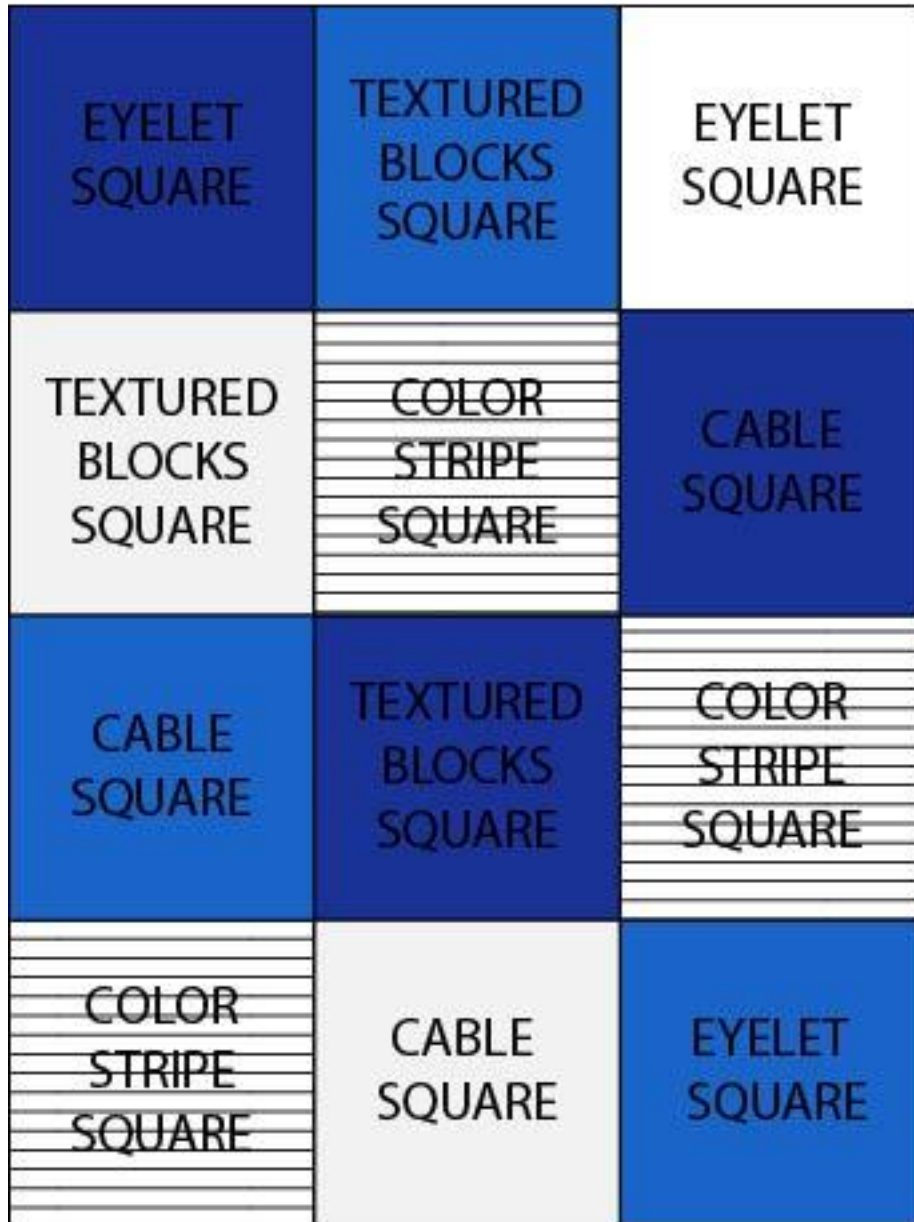
For thousands of free patterns, visit our website www.LionBrand.com

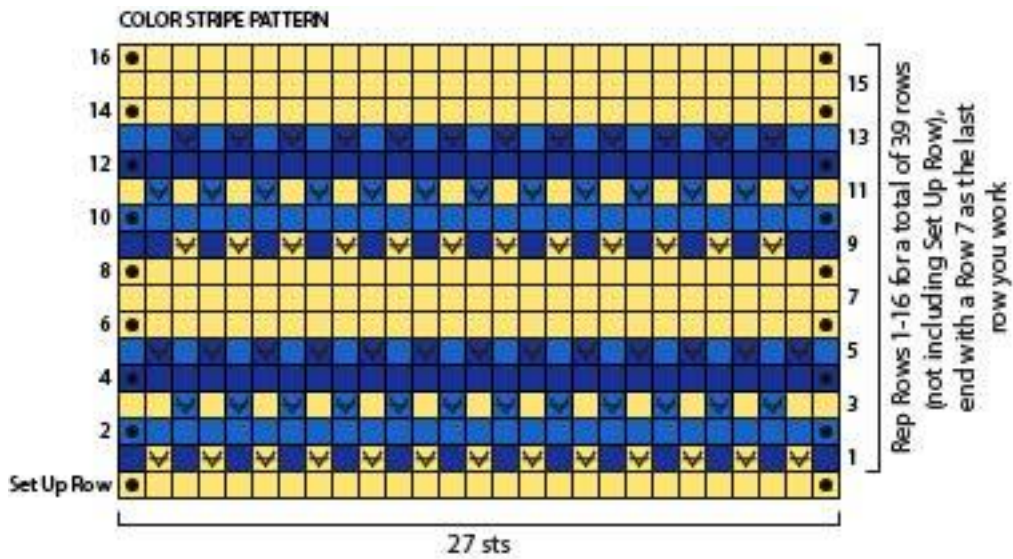
To order visit our website www.lionbrand.com or call: (800) 258-YARN (9276) any time!

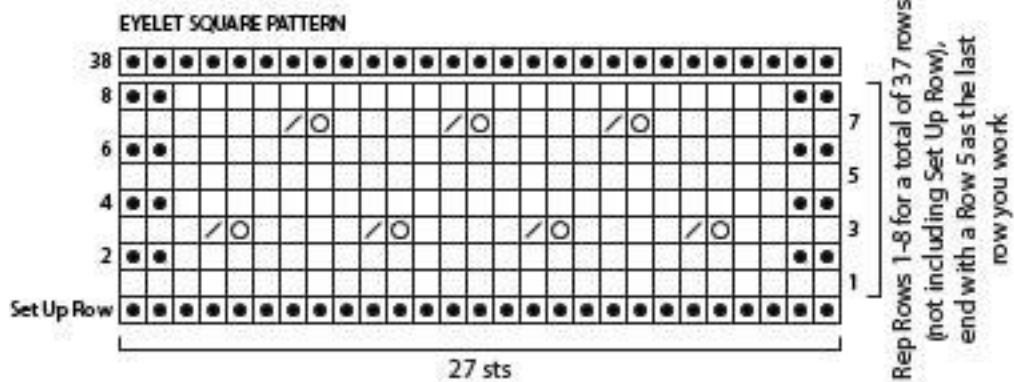
Copyright ©1998-2017 Lion Brand Yarn Company, all rights reserved.

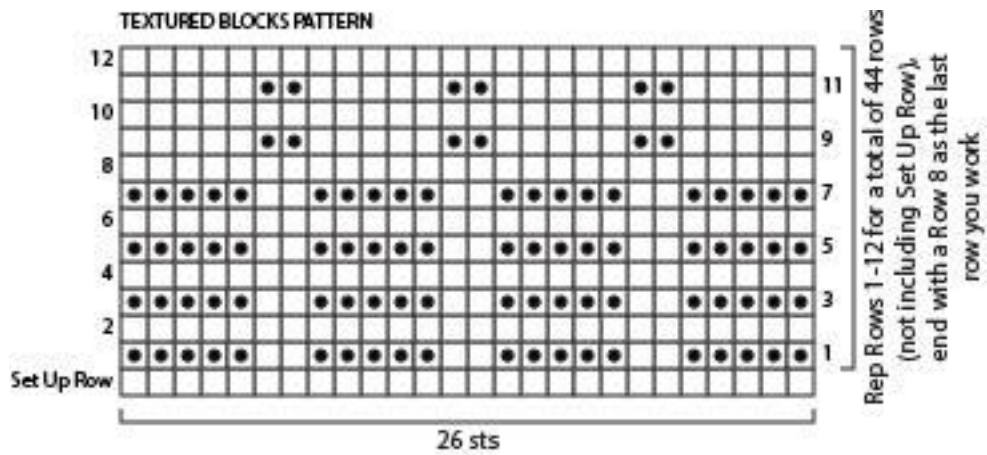
No pattern or other material may be reproduced -- mechanically, electronically, or by any other means, including photocopying - without written permission of Lion Brand Yarn Company.















-  #098 Houston Cream (A)
-  #111 San Diego Navy (B)
-  #105 Detroit Blue (C)
-  #302 Aspen Tweed (D)

