



Free Crochet Pattern
Lion Brand® Wool-Ease® Thick & Quick®
Wildwood Hat
Pattern Number: L70029
Designed by Teresa Chorzepa



SKILL LEVEL – Easy

SIZE

Finished Circumference About 20 in. (51 cm), will stretch to fit a range of sizes

MATERIALS

- Lion Brand® Wool-Ease® Thick & Quick® (Art. #640)
 - 612 Coney Island 2 balls
- Lion Brand® crochet hook size N-13 (9 mm)
- Lion Brand® Pom-Pom Maker
- Lion Brand® large-eyed blunt needle



GAUGE

5 pattern reps = about 4 1/2 in. (11.5 cm) over Rows 1-6 of pattern.

Note: One pattern rep consists of a ch-1 sp and the following sc.

BE SURE TO CHECK YOUR GAUGE.

NOTES

1. Hat is worked in joined and turned rnds beginning at lower edge.
2. If you find it difficult to join the beg ch into a ring without twisting the ch, Rnd 1 can be worked as a row, then joined into a rnd, as follows: Leaving a long beg tail, ch 45, sc in 2nd ch from hook, *ch 1, sk next ch, sc in next ch; rep from * to last ch, ch 1, sk last ch; join with sl st in first sc – you will have 22 pattern reps (22 sc and 22 ch-1 sps) in this row/rnd. Use beg tail to sew gap at base of first row closed. Proceed to Rnd 2.
3. For those who find a visual helpful, we have included a stitch diagram.

HAT

Ch 44; taking care not to twist ch, join with sl st in first ch to form a ring.

Rnd 1 (WS): Ch 1, sc in same ch as join, *ch 1, sk next ch, sc in next ch; rep from * to last ch, ch 1, sk last ch; join with sl st in first ch – you will have 22 pattern reps (22 sc and 22 ch-1 sps) in this rnd.

Rnds 2-6: Ch 1, turn, sc in first ch-1 sp, *ch 1, sk next sc, sc in next ch-1 sp; rep from * to last sc, ch 1, sk last sc; join with sl st in first sc.

Rnd 7 (WS): Ch 3, turn, dc in first ch-1 sp (beg ch-3 and first dc count as first 2-dc group), 2 dc in each ch-1 sp around; join with sl st in top of beg ch-3 – Twenty-two 2-dc groups.

Rnd 8: Ch 1, turn, sc in sp before first 2-dc group, *ch 1, sc in next sp between 2-dc groups; rep from * around, ch 1; join with sl st in first sc – 22 sc and 22 ch-1 sps.

Rnds 9 and 10: Rep Rnd 2 twice.

Rnds 11-18: Rep Rnds 7-10 twice

Rnd 19 (Decrease Rnd): Ch 1, turn, sc in each ch-1 sp around; join with sl st in first sc – 22 sc.

For thousands of free patterns, visit our website www.LionBrand.com

To order visit our website www.lionbrand.com or call: (800) 258-YARN (9276) any time!

Copyright ©1998-2017 Lion Brand Yarn Company, all rights reserved.

No pattern or other material may be reproduced -- mechanically, electronically, or by any other means, including photocopying - without written permission of Lion Brand Yarn Company.

Fasten off, leaving a long yarn tail. Thread yarn tail into blunt needle and through sts of last rnd. Pull tail to close opening at top of Hat and knot.

FINISHING

Pom-Pom

Following package directions, make a large pom-pom. Tie pom-pom to top of Hat.

Weave in yarn ends.

ABBREVIATIONS

beg = begin(ning)

ch = chain

ch-sp(s) = chain space(s) previously made

dc = double crochet

rep(s) = repeat(s)

rnd(s) = round(s)

sc = single crochet

sl st = slip stitch

st(s) = stitch(es)

WS = wrong side

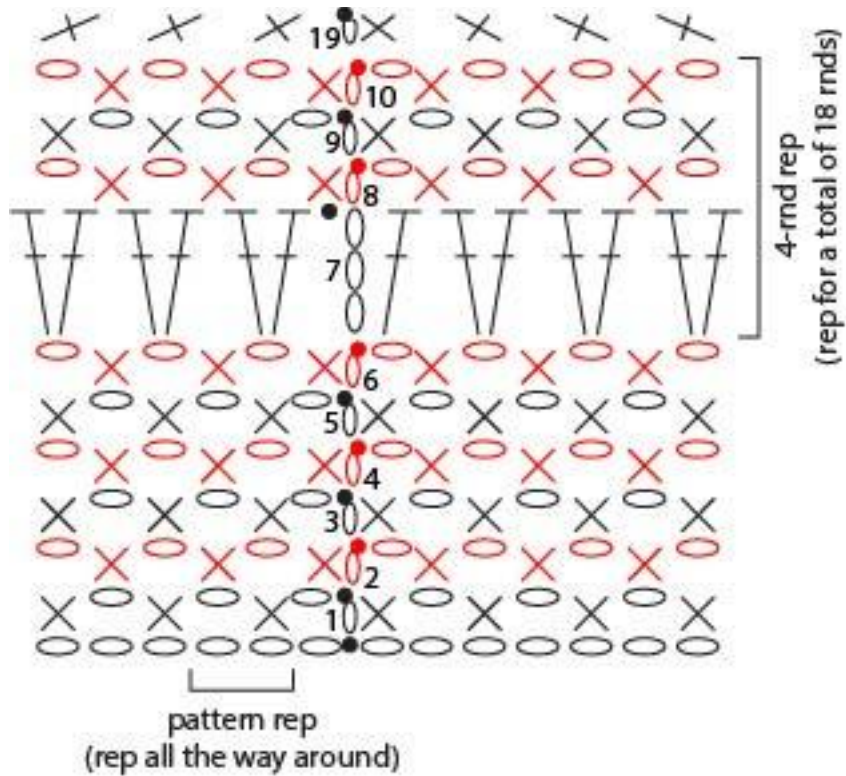
Every effort has been made to produce accurate and complete instructions. We cannot be responsible for variance of individual crafters, human error, or typographical mistakes.

For thousands of free patterns, visit our website www.LionBrand.com

To order visit our website www.lionbrand.com or call: (800) 258-YARN (9276) any time!

Copyright ©1998-2017 Lion Brand Yarn Company, all rights reserved.

No pattern or other material may be reproduced -- mechanically, electronically, or by any other means, including photocopying - without written permission of Lion Brand Yarn Company.



KEY	
●	= slip stitch (sl st)
○	= chain (ch)
X	= single crochet (sc)
⋈	= double crochet (dc)