



Free Knitting Pattern
Lion Brand® Pound of Love®
Textured Stitch Poncho
Pattern Number: L60409
Designed by Teresa Chorzepa



SKILL LEVEL – Easy+

SIZE

Finished Width About 50 1/2 in.(128.5 cm)

Finished Length About 24 in. (61 cm), not including collar

MATERIALS

- Lion Brand® Pound of Love® (Art. #550)
 - 149 Charcoal 1 ball (A)
 - 143 Claret 1 ball (B)
- Lion Brand® stitch markers
- Lion Brand® large-eyed blunt needle



ADDITIONAL MATERIALS

Circular knitting needle size 8 (5 mm), 29 in. (73.5 cm) long

GAUGE

16 1/2 sts + 24 rows = 4 in. (10 cm) in Texture pattern.

BE SURE TO CHECK YOUR GAUGE.

STITCH EXPLANATIONS

M1 (make 1) An increase worked by lifting the horizontal strand lying between needles and placing it onto the left needle. Knit this new stitch through the back loop – 1 st increased.

ssk (slip, slip, knit) Slip next 2 sts as if to knit, one at a time, to right needle; insert left needle into fronts of these 2 sts and knit them together – 1 st decreased.

PATTERN STITCH

Texture Pattern (worked over a multiple of 8 sts + 3 additional sts)

Row 1 (RS): Knit.

Row 2: Purl.

Row 3: K1, *p1, k1; rep from * across.

Rows 4-6: Work in St st (k on RS, p on WS) for 3 rows.

Row 7: K1, *p1, k7; rep from * to last 2 sts, p1, k1.

Rows 8-11: Rep Rows 4-7.

Row 12: Purl.

Rep Rows 1-12 for Texture pattern.

NOTES

1. Poncho is made from 2 pieces: Front and Back.
2. Front and Back are both worked from side to side, beginning and ending with a 2-color mosaic pattern.
3. A mosaic colorwork collar is worked along the neck edge.

For thousands of free patterns, visit our website www.LionBrand.com

To order visit our website www.lionbrand.com or call: (800) 258-YARN (9276) any time!

Copyright ©1998-2017 Lion Brand Yarn Company, all rights reserved.

No pattern or other material may be reproduced -- mechanically, electronically, or by any other means, including photocopying - without written permission of Lion Brand Yarn Company.

4. When working RS rows of mosaic pattern, slip sts as if to purl and with yarn in back (wyib). When working WS rows, slip sts as if to purl and with yarn in front (wyif). Each row is worked with a single color. The yarn color is changed on every other row. Carry color not in use up side of piece.
5. With yarn in front (wyif) refers to the side of the work facing you as you work the row. With yarn in back (wyib) refers to the side of the work that is away from you as you work the row. To move yarn from front to back or back to front, bring yarn between needles. Take care not to wrap yarn over a needle, this could create an additional st.
6. The mosaic patterns can be worked by following the written instructions or by reading the charts. One row of the chart represents 2 rows of knitting. Read the first RS row from right to left. Then read the same row from left to right for the following WS row. To work from chart, knit each st represented by a box of the current color and slip each st represented by a box of the previous color.
7. The texture patterns of body of Front and Back can be worked following the written instructions or reading the chart(s). When working from charts, read RS rows from right to left and WS rows from left to right.
8. A circular needle is used to accommodate the large number of sts. Work back and forth in rows on the circular needle as if working with straight needles.

FRONT

With A, cast on 92 sts.

Set-Up Row (WS): With A, knit.

First Mosaic Side Border

Row 1 (RS): With B, k1, *sl 1 wyib, k3, sl 1 wyib, k5; rep from * to last st, k1.

Row 2: With B, k1, *k5, sl 1 wyif, k3, sl 1 wyif; rep from * to last st, k1.

Row 3: With A, k1, *k5, sl 1 wyib, k3, sl 1 wyib; rep from * to last st, k1.

Row 4: With A, k1, *sl 1 wyif, k3, sl 1 wyif, k5; rep from * to last st, k1.

Row 5: With B, *k7, sl 3 wyib; rep from * to last 2 sts, k2.

Row 6: With B, k2, *sl 3 wyif, k7; rep from * to end of row.

Rows 7 and 8: Rep Rows 3 and 4.

Rows 9 and 10: Rep Rows 1 and 2.

Row 11: With A, k2, *sl 3 wyib, k7; rep from * to end of row.

Row 12: With A, *k7, sl 3 wyif; rep from * to last 2 sts, k2.

Rows 13-22: Rep Rows 1-10.

Rows 23 and 24: With A, knit.

Body

Cut A, work body with B only.

Row 1 (Increase Row – RS): K1, M1, k to end of row – you will have 93 sts.

Row 2: Purl.

Row 3: K1, *p1, k1; rep from * across.

Rows 4-6: Work in St st (k on RS, p on WS) for 3 rows.

For thousands of free patterns, visit our website www.LionBrand.com

To order visit our website www.lionbrand.com or call: (800) 258-YARN (9276) any time!

Copyright ©1998-2017 Lion Brand Yarn Company, all rights reserved.

No pattern or other material may be reproduced -- mechanically, electronically, or by any other means, including photocopying - without written permission of Lion Brand Yarn Company.

Row 7: P1, k2, *p1, k2, p3, k2; rep from * to last 2 sts, p1, k1.

Row 8: Purl.

Row 9: P1, k2, *k3, p3, k2; rep from * to last 2 sts, k2.

Rows 10-12: Rep Rows 6-8.

Row 13: Knit.

Rows 14-24: Rep Rows 2-12.

Row 25: Rep Row 1 – 94 sts.

Row 26: Purl.

Row 27: *P1, k1; rep from * to end of row.

Rows 28-30: Work in St st for 3 rows.

Row 31: P2, k2, *p1, k2, p3, k2; rep from * to last 2 sts, p1, k1.

Row 32: Purl.

Row 33: P2, k2, *k3, p3, k2; rep from * to last 2 sts, k2.

Rows 34-36: Rep Rows 30-32.

Row 37: Knit.

Row 38-48: Rep Rows 26-36.

Row 49: Rep Row 1 – 95 sts.

Rows 50-54: Rep Row 2-6.

Row 55: P3, k2, *p1, k2, p3, k2; rep from * to last 2 sts, p1, k1.

Row 56: Purl.

Row 57: P3, k2, *k3, p3, k2; rep from * to last 2 sts, k2.

Rows 58-60: Rep Rows 54-56.

Row 61: Rep Row 1 – 96 sts.

Rows 62-66: Rep Rows 26-30.

Row 67: K1, p3, k2, *p1, k2, p3, k2; rep from * to last 2 sts, p1, k1.

Row 68: Purl.

Row 69: K1, p3, k2, *k3, p3, k2; rep from * to last 2 sts, k2.

Rows 70-72: Rep Rows 66-68.

Row 73: Rep Row 1 – 97 sts.

Rows 74-78: Rep Rows 2-6.

Row 79: K2, p3, k2, *p1, k2, p3, k2; rep from * to last 2 sts, p1, k1.

Row 80: Purl.

Row 81: K2, p3, k2, *k3, p3, k2; rep from * to last 2 sts, k2.

Rows 82-84: Rep Rows 78-80.

Row 85: Rep Row 1 – 98 sts.

Rows 86-90: Rep Rows 26-30.

Row 91: *P1, k2, p3, k2; rep from * to last 2 sts, p1, k1.

Row 92: Purl.

Row 93: K3, p3, k2, *k3, p3, k2; rep from * to last 2 sts, k2.

Rows 94-96: Rep Rows 90-92.

For thousands of free patterns, visit our website www.LionBrand.com

To order visit our website www.lionbrand.com or call: (800) 258-YARN (9276) any time!

Copyright ©1998-2017 Lion Brand Yarn Company, all rights reserved.

No pattern or other material may be reproduced -- mechanically, electronically, or by any other means, including photocopying - without written permission of Lion Brand Yarn Company.

Row 97: Rep Row 1 – 99 sts. Place a marker at beg of Row 97 for collar placement.

Rows 98-168: Beg with Row 2 of pattern, work in Texture pattern for 71 rows. Place a marker at end of Row 168 for collar placement.

Row 169 (Decrease Row - RS): K1, ssk, k to end of row – 98 sts.

Rows 170-180: Rep Rows 86-96.

Row 181: Rep Row 169 – 97 sts.

Rows 182-192: Rep Rows 74-84.

Row 193: Rep Row 169 – 96 sts.

Rows 194-204: Rep Rows 62-72.

Row 205: Rep Row 169 – 95 sts.

Rows 206-216: Rep Rows 50-60.

Row 217: Rep Row 169 – 94 sts.

Rows 218-240: Rep Rows 26-48.

Row 241: Rep Row 169 – 93 sts.

Rows 242-264: Rep Rows 2-24.

Second Mosaic Side Border

Row 265: With A, k1, ssk, k to end of row – 92 sts.

Row 266 (Set-Up Row – WS): With A, knit.

Rows 267-290: Rep Rows 1-24 of first side border.

Bind off.

Mosaic Collar

From RS with A, pick up and k57 sts evenly spaced between markers on top edge.

Knit 1 row.

Beg Mosaic Pattern

Row 1 (RS): With B, k1, *sl 1 wyib, k3, sl 1 wyib, k5; rep from * to last 6 sts, sl 1 wyib, k3, sl 1 wyib, k1.

Row 2: With B, k1, *sl 1 wyif, k3, sl 1 wyif, k5; rep from * to last 6 sts, sl 1 wyif, k3, sl 1 wyif, k1.

Row 3: With A, k6, *sl 1wyib, k3, sl 1 wyib, k5; rep from * to last st, k1.

Row 4: With A, k6, *sl 1 wyif, k3, sl 1 wyif, k5; rep from * to last st, k1.

Row 5: With B, k7, *sl 3 wyib, k7; rep from * to end of row.

Row 6: With B, k7, *sl 3 wyif, k7; rep from * to end of row.

Rows 7 and 8: Rep Rows 3 and 4.

Rows 9 and 10: Rep Rows 1 and 2.

Row 11: With A, k2, *sl 3 wyib, k7; rep from * to last 5 sts, sl 3 wyib, k2.

Row 12: With A, k2, *sl 3 wyif, k7; rep from * to last 5 sts, sl 3 wyif, k2.

For thousands of free patterns, visit our website www.LionBrand.com

To order visit our website www.lionbrand.com or call: (800) 258-YARN (9276) any time!

Copyright ©1998-2017 Lion Brand Yarn Company, all rights reserved.

No pattern or other material may be reproduced -- mechanically, electronically, or by any other means, including photocopying - without written permission of Lion Brand Yarn Company.

Rows 13-22: Rep Rows 1-10.
Rows 23 and 24: With A, knit.
Bind off.

Shoulder Edging

From RS with A, pick up and k104 sts evenly spaced along one shoulder edge, between side edge and beg of collar.
Knit one row, then bind off.

Rep along 2nd shoulder edge.

Lower Edging

From RS with A, pick up and k228 sts evenly spaced along lower edge (straight edge opposite collar).
Knit one row, then bind off.

BACK

Make same as Front, reversing yarn colors A and B throughout, including mosaic borders, collar and edgings.

FINISHING

Sew shoulder seams and side edges of collar.

Weave in ends.

ABBREVIATIONS

beg = begin(ning)(s)

k = knit

p = purl

rep = repeat

RS = right side

sl = slip

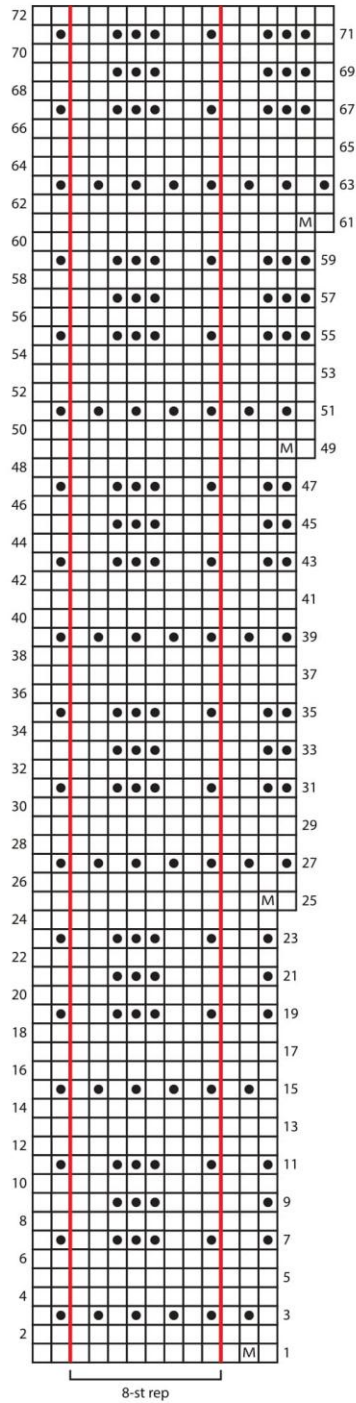
st(s) = stitch(es)

St st = Stockinette stitch

WS = wrong side

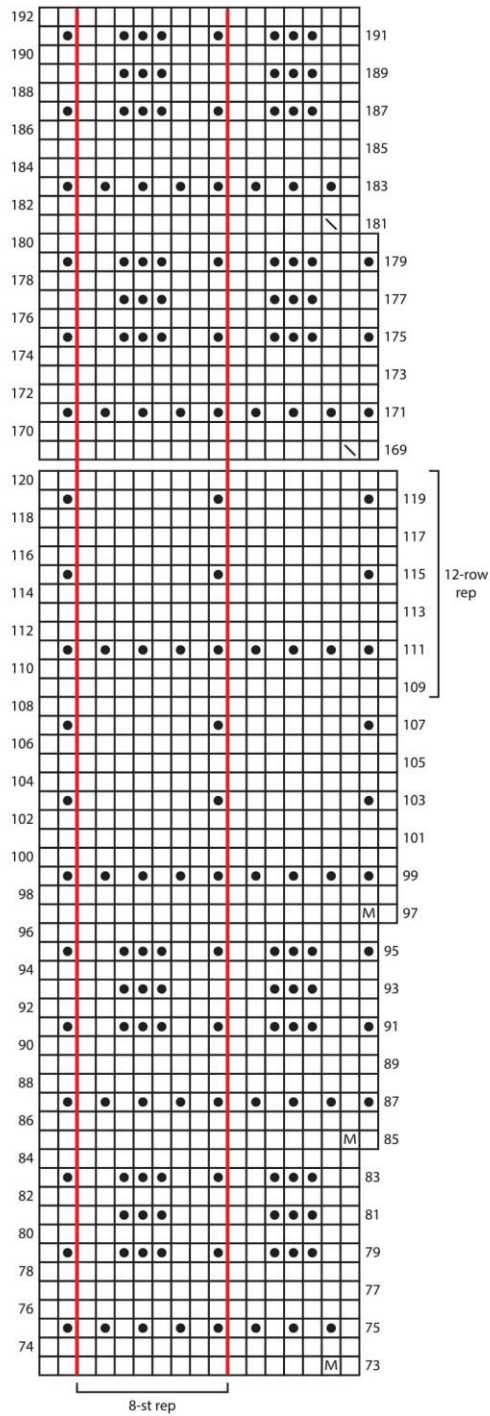
Every effort has been made to produce accurate and complete instructions. We cannot be responsible for variance of individual crafters, human error, or typographical mistakes.

Lion Brand® Pound of Love® Textured Stitch Poncho
 Pattern Number: L60409



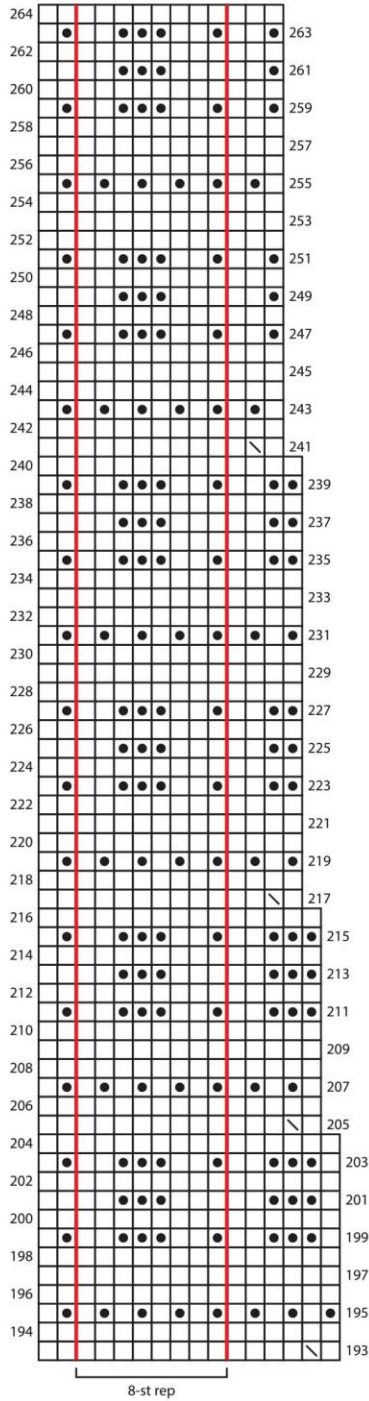
For thousands of free patterns, visit our website www.LionBrand.com
 To order visit our website www.lionbrand.com or call: (800) 258-YARN (9276) any time!
 Copyright ©1998-2017 Lion Brand Yarn Company, all rights reserved.
 No pattern or other material may be reproduced -- mechanically, electronically, or by any other means, including photocopying - without written permission of Lion Brand Yarn Company.

Lion Brand® Pound of Love® Textured Stitch Poncho
 Pattern Number: L60409

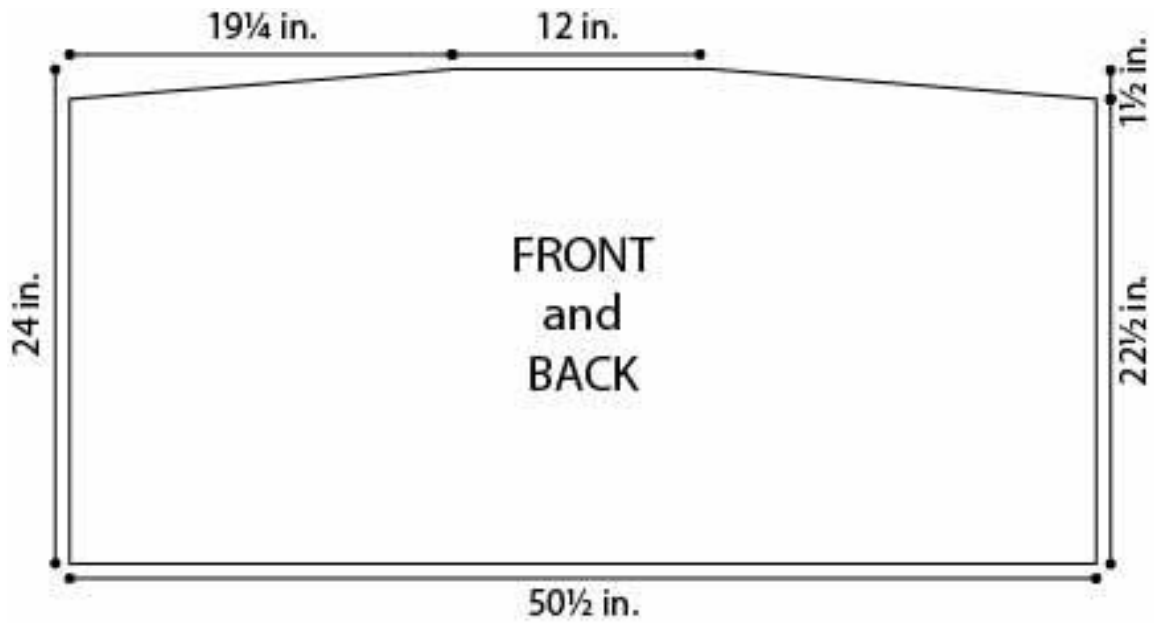


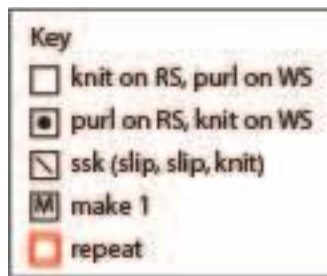
For thousands of free patterns, visit our website www.LionBrand.com
 To order visit our website www.lionbrand.com or call: (800) 258-YARN (9276) any time!
 Copyright ©1998-2017 Lion Brand Yarn Company, all rights reserved.
 No pattern or other material may be reproduced -- mechanically, electronically, or by any other means, including photocopying - without written permission of Lion Brand Yarn Company.

Lion Brand® Pound of Love® Textured Stitch Poncho
 Pattern Number: L60409

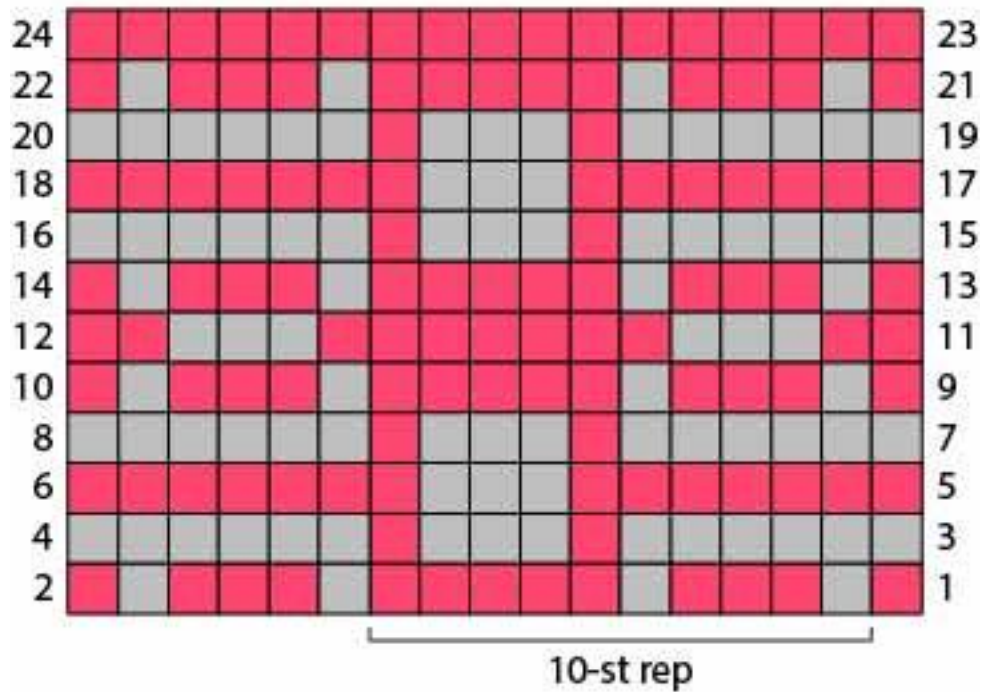


For thousands of free patterns, visit our website www.LionBrand.com
 To order visit our website www.lionbrand.com or call: (800) 258-YARN (9276) any time!
 Copyright ©1998-2017 Lion Brand Yarn Company, all rights reserved.
 No pattern or other material may be reproduced -- mechanically, electronically, or by any other means, including photocopying - without written permission of Lion Brand Yarn Company.





Mosaic Collar Pattern



Mosaic Side Border Pattern

