



Free Crochet Pattern
Lion Brand® Vanna's Style®
Gulf Coast Pullover
Pattern Number: L70103
Designed by Teresa Chorzepa



SKILL LEVEL – Easy+

SIZE

One Size

Finished Bust About 76 in. (193 cm)

Finished Length About 25 in. (63.5 cm)

MATERIALS

- Lion Brand® Vanna's Style® (Art. #867)
 - 114 Denim 7 balls
- Lion Brand® crochet hook size H-8 (5 mm)
- Lion Brand® large-eyed blunt needle



GAUGE

14 1/2 dc + 8 rows = about 4 in. (10 cm).

BE SURE TO CHECK YOUR GAUGE.

STITCH EXPLANATION

shell (2 dc, ch 1, 2 dc) in indicated st or sp.

NOTES

1. Pullover is made in 4 pieces: Back, Front and 2 Sleeves.
2. Pullover is designed with a generous, boxy fit.
3. Front and Back are identical. Each is worked in a pattern of 15-dc groups and lacy shell sections. Sleeves are worked in double crochet.
4. For those who find a visual helpful, we've included a stitch diagram.

BACK

Ch 137.

Row 1 (RS): Dc in 4th ch from hook (3 skipped ch count as first dc) and in next 13 ch, *ch 2, sk next 3 ch, shell in next ch, ch 2, sk next 3 ch, dc in next ch, ch 2, sk next 3 ch, shell in next ch, ch 2, sk next 3 ch, dc in next 15 ch; rep from * 3 more times – you will have five 15-dc groups and 4 lacy shell sections.

Rows 2-12: Ch 3 (counts as dc), turn, sk first dc, *dc in each dc to next ch-2 sp, ch 2, sk next ch-2 sp, shell in ch-1 sp of next shell, ch 2, sk next ch-2 sp, dc in next dc, ch 2, sk next ch-2 sp, shell in ch-1 sp of next shell, ch 2, sk next ch-2 sp; rep from * 3 more times, dc in next 14 dc, dc in top of beg ch.

Row 13: Ch 5 (counts as dc, ch 2), turn, sk first 3 dc, *shell in next dc, ch 2, sk next 3 dc, dc in next dc, ch 2, sk next 3 dc, shell in next dc, ch 2, sk next 2 dc, (dc in next dc, 2 dc in next ch-2 sp, 2 dc in ch-1 sp of next shell, 2 dc in next ch-2 sp) twice, dc in next dc, ch 2, sk next 2 dc; rep from * 3 more times, shell in next dc, ch 2, sk next 3 dc, dc in next dc, ch 2, sk next 3 dc, shell in next dc, ch 2, sk next 2 dc, dc in top of beg ch-3 – Four 15-dc groups and 5 lacy shell sections.

For thousands of free patterns, visit our website www.LionBrand.com

To order visit our website www.lionbrand.com or call: (800) 258-YARN (9276) any time!

Copyright ©1998-2017 Lion Brand Yarn Company, all rights reserved.

No pattern or other material may be reproduced -- mechanically, electronically, or by any other means, including photocopying - without written permission of Lion Brand Yarn Company.

Rows 14-24: Ch 5 (counts as dc, ch 2), turn, sk first dc, *sk next ch-2 sp, shell in ch-1 sp of next shell, ch 2, sk next ch-2 sp, dc in next dc, ch 2, sk next ch-2 sp, shell in ch-1 sp of next shell, ch 2, sk next ch-2 sp, dc in next 15 dc, ch 2; rep from * 3 more times, sk next ch-2 sp, shell in ch-1 sp of next shell, ch 2, sk next ch-2 sp, dc in next dc, ch 2, sk next ch-2 sp, shell in ch-1 sp of last shell, ch 2, dc in 3rd ch of beg ch-5.

Row 25: Ch 3 (counts as dc), turn, *(2 dc in next ch-2 sp, 2 dc in ch-1 sp of next shell, 2 dc in next ch-2 sp, dc in next dc) twice, ch 2, sk next 2 dc, shell in next dc, ch 2, sk next 3 dc, dc in next dc, ch 2, sk next 3 dc, shell in next dc, ch 2, sk next 2 dc, dc in next dc; rep from * 3 more times, 2 dc in next ch-2 sp, 2 dc in ch-1 sp of next shell, 2 dc in next ch-2 sp, dc in next dc, 2 dc in next ch-2 sp, 2 dc in ch-1 sp of last shell, 2 dc in beg ch-sp, dc in 3rd ch of beg ch-5 – Five 15-dc groups and 4 lacy shell sections.

Rows 26-48: Rep Rows 2-24.

Row 49: Ch 3 (counts as dc), turn, *hdc in next ch-2 sp, sc in next 2 dc (first 2 dc of shell), sl st in ch-1 sp of shell, sc in next 2 dc, hdc in next ch-2 sp, dc in next dc, hdc in next ch-2 sp, sc in next 2 dc, sl st in ch-1 sp of shell, sc in next 2 dc, hdc in next ch-2 sp, dc in each dc to next ch-2 sp; rep from * 3 more times, hdc in next ch-2 sp, sc in next 2 dc, sl st in ch-1 sp of next shell, sc in next 2 dc, hdc in next ch-2 sp, dc in next dc, hdc in next ch-2 sp, sc in next 2 dc, sl st in ch-1 sp of shell, sc in next 2 dc, hdc in beg ch-sp, dc in 3rd ch of beg ch-5 – 137 sts.

Row 50: Ch 1, turn, sc in each st across.
Fasten off.

FRONT

Make same as Back.

SLEEVES (make 2)

Beg at wrist, ch 32.

Row 1: Dc in 4th ch from hook (3 skipped ch count as first dc), dc in each ch across – 30 dc.

Row 2: Ch 3 (counts as dc), turn, sk first dc, dc in each dc across, dc in top of beg ch.

Row 3: Ch 3 (counts as dc), turn, sk first dc, dc in each dc across, dc in top of beg ch.

Row 4 (Increase Row): Ch 3 (counts as dc), turn, dc in first dc (increase made), dc in each dc to last 2 sts, 2 dc in next dc, dc in top of beg ch-3 – 32 dc.

Rows 5-7: Rep Row 3 for 3 times.

Row 8: Rep Row 4 – 34 dc.

Rows 9-16: Rep Rows 5-8 twice – 38 dc in Row 16.

Rows 17-22: Rep Rows 3 and 4 for 3 times – 44 dc.

For thousands of free patterns, visit our website www.LionBrand.com

To order visit our website www.lionbrand.com or call: (800) 258-YARN (9276) any time!

Copyright ©1998-2017 Lion Brand Yarn Company, all rights reserved.

No pattern or other material may be reproduced -- mechanically, electronically, or by any other means, including photocopying - without written permission of Lion Brand Yarn Company.

Rows 23 and 24: Rep Row 3 twice.
Fasten off.

FINISHING

Sew top edges of Front and Back together for shoulders, leaving center 12 in. (30.5 cm) open for neck.

Note: If desired, shoulder seams can be slip stitched together instead. Work from the WS and crochet through the outside loops of the sts along top edge of both pieces.

Sew tops of Sleeves to Front and Back, lining up center of Sleeve with shoulder seam.

Sew side and Sleeve seams.

Weave in ends.

ABBREVIATIONS

beg = begin(ning)(s)

ch = chain

ch-sp(s) = chain space(s) previously made

dc = double crochet

hdc = half double crochet

rep = repeat

RS = right side

sc = single crochet

sk = skip

sl st = slip stitch

st(s) = stitch(es)

WS = wrong side

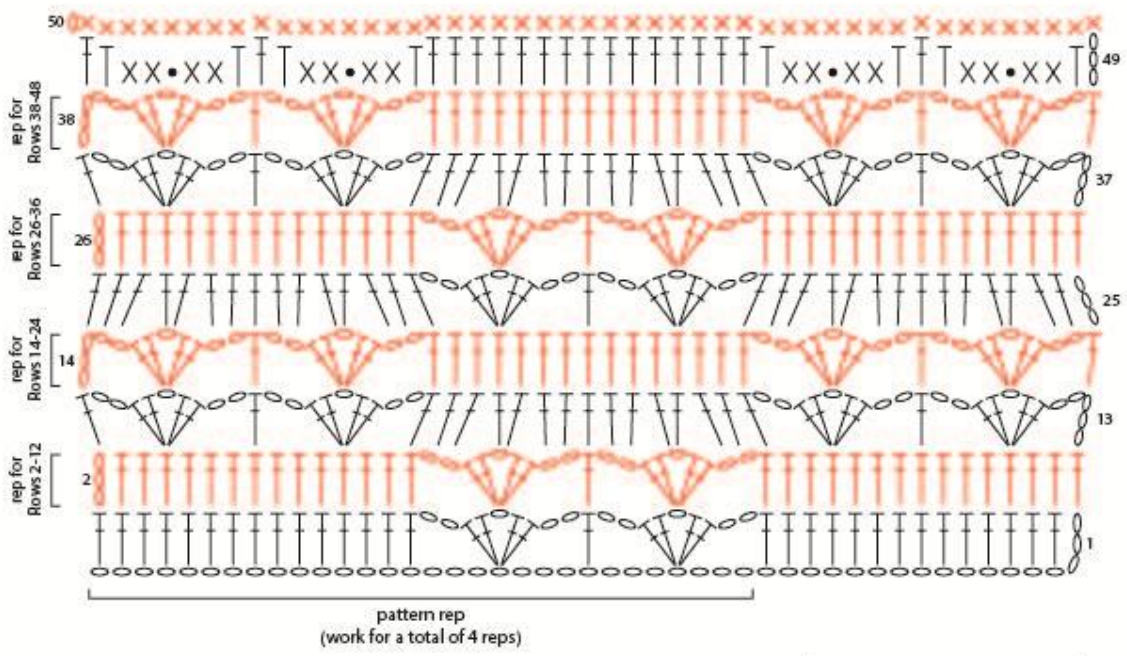
Every effort has been made to produce accurate and complete instructions. We cannot be responsible for variance of individual crafters, human error, or typographical mistakes.

For thousands of free patterns, visit our website www.LionBrand.com

To order visit our website www.lionbrand.com or call: (800) 258-YARN (9276) any time!

Copyright ©1998-2017 Lion Brand Yarn Company, all rights reserved.

No pattern or other material may be reproduced -- mechanically, electronically, or by any other means, including photocopying - without written permission of Lion Brand Yarn Company.



| KEY | |
|-----|-----------------------------|
| ● | = slip stitch (sl st) |
| ○ | = chain (ch) |
| × | = single crochet (sc) |
| ┆ | = half double crochet (hdc) |
| ┆ | = double crochet (dc) |

For thousands of free patterns, visit our website www.LionBrand.com
 To order visit our website www.lionbrand.com or call: (800) 258-YARN (9276) any time!
 Copyright ©1998-2017 Lion Brand Yarn Company, all rights reserved.
 No pattern or other material may be reproduced -- mechanically, electronically, or by any other means, including photocopying - without written permission of Lion Brand Yarn Company.

