



Free Crochet Pattern
Lion Brand® Vanna's Choice®
Pasadena Blankie
Pattern Number: L70070
Designed by Teresa Chorzepa



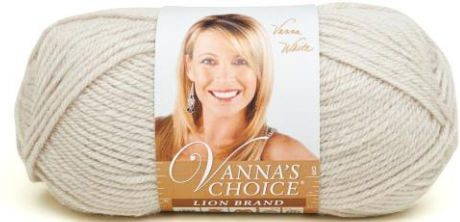
SKILL LEVEL – Intermediate

SIZE

About 28 x 33 in. (71 x 84 cm)

MATERIALS

- Lion Brand® Vanna's Choice® (Art. #860)
 - 098 Fisherman 1 ball (A)
 - 115 Light Blue 1 ball (B)
 - 139 Rose Shocking 1 ball (C)
 - 159 Lemon 1 ball (D)
 - 183 Periwinkle 1 ball (E)
 - 104 Pink Grapefruit 1 ball (F)
 - 191 Lilac 1 ball (G)
 - 175 Radiant Lime 1 ball (H)
 - 169 Pistachio 1 ball (I)
- Lion Brand® crochet hook size J-10 (6 mm)
- Lion Brand® large-eyed blunt needle



GAUGE

Each Flower = about 2 1/2 in. (6.5 cm) measured diagonally from corner to corner and about 2 in. (5 cm) measured from side to side.

BE SURE TO CHECK YOUR GAUGE.

STITCH EXPLANATIONS

Beg-Popcorn (beginning popcorn) Ch 3, work 4 dc in indicated st, drop loop from hook, insert hook from front to back in top of beginning ch-3, return dropped loop to hook and draw it through the top of beginning ch-3.

Popcorn Work 5 dc in indicated st, drop loop from hook, insert hook from front to back in first dc of the 5-dc group just made, return dropped loop to hook and draw it through the first dc.

rev sc (reverse single crochet) Single crochet worked from left to right (right to left, if left-handed). Insert hook into next stitch to the right (left), under loop on hook, and draw up a loop. Yarn over and draw through all loops on hook.

NOTES

1. Blankie is made from 225 Flowers, 13 Half Flowers, and 2 Corner Flowers.
2. The Flowers are joined as you work, following a diagram for color and placement.
3. Flowers are worked in the rnd; Half and Corner Flowers are worked in rows.

For thousands of free patterns, visit our website www.LionBrand.com

To order visit our website www.lionbrand.com or call: (800) 258-YARN (9276) any time!

Copyright ©1998-2017 Lion Brand Yarn Company, all rights reserved.

No pattern or other material may be reproduced -- mechanically, electronically, or by any other means, including photocopying - without written permission of Lion Brand Yarn Company.

4. A border is worked in rounds around the outside edge of the Blankie, changing yarn color at the halfway point of each rnd. To change yarn color, work last st of old color to last yarn over. Yarn over with new color and draw through all loops to complete st. Proceed with new color and fasten off old color.
5. For those who find a visual helpful, we've included a stitch diagram.

FLOWER 1

With I, ch 4; join with sl st in first ch to make a ring.

Rnd 1 (RS): Ch 1, 6 sc in ring; join with sl st in first sc.

Rnd 2: Beg-Popcorn in same sc as join, (ch 2, Popcorn in next sc) 5 times, ch 2; join with sl st in top of Beg-Popcorn – you will have 6 Popcorn sts and 6 ch-2 sps in this rnd.

Fasten off.

FLOWER 2

With B, ch 4; join with sl st in first ch to make a ring.

Rnd 1 (RS): Ch 1, 6 sc in ring; join with sl st in first sc.

Rnd 2: Beg-Popcorn in same sc as join, (ch 2, Popcorn in next sc) twice, sl st in any Popcorn of Flower 1, ch 2, Popcorn in next sc, sl st in next Popcorn of Flower 1, (ch 2, Popcorn in next sc) twice, ch 2; join with sl st in top of Beg-Popcorn.

Fasten off.

FLOWERS 3-15

Make same as Flower 2, following diagram for yarn color and joining each Flower to previous Flower to make a strip.

CORNER FLOWER 1

With I, ch 4; join with sl st in first ch to make a ring.

Row 1 (WS): Ch 1, 3 sc in ring.

Row 2: Turn, Beg-Popcorn in first sc, sl st in top left Popcorn of Flower 15, ch 2, Popcorn in next sc, sl st in next Popcorn of Flower 15, ch 2, Popcorn in next sc.

Fasten off.

HALF FLOWER 1

With D, ch 4; join with sl st in first ch to make a ring.

Row 1 (WS): Ch 1, 4 sc in ring.

Row 2: Turn, Beg-Popcorn in first sc, (ch 2, Popcorn in next sc) twice, sl st in right center Popcorn of Flower 1, ch 2, Popcorn in next sc, sl st in next Popcorn of Flower 1.

Fasten off.

FLOWER 16

With B, ch 4; join with sl st in first ch to make a ring.

Rnd 1 (RS): Ch 1, 6 sc in ring; join with sl st in first sc.

For thousands of free patterns, visit our website www.LionBrand.com

To order visit our website www.lionbrand.com or call: (800) 258-YARN (9276) any time!

Copyright ©1998-2017 Lion Brand Yarn Company, all rights reserved.

No pattern or other material may be reproduced -- mechanically, electronically, or by any other means, including photocopying - without written permission of Lion Brand Yarn Company.

Rnd 2: Beg-Popcorn in same sc as join, (ch 2, Popcorn in next sc) twice, sl st in right center Popcorn of Flower 2, ch 2, Popcorn in next sc, sl st in join between Flower 1 and Flower 2, ch 2, Popcorn in next sc, sl st in join between Half Flower 1 and Flower 1, ch 2, Popcorn in next sc, sl st in top right Popcorn of Half Flower 1, ch 2; join with sl st in top of Beg-Popcorn.
Fasten off.

FLOWERS 17-30

Make same as Flower 16, following diagram for yarn color and for where to join.

FLOWER 31

With H, ch 4; join with sl st in first ch to make a ring.

Rnd 1 (RS): Ch 1, 6 sc in ring; join with sl st in first sc.

Rnd 2: Beg-Popcorn in same sc as join, (ch 2, Popcorn in next sc) twice, sl st in right center Popcorn of Flower 16, ch 2, Popcorn in next sc, sl st in join between Flower 16 and Half Flower 1, ch 2, Popcorn in next sc, sl st in lower right Popcorn of Half Flower 1, ch 2, Popcorn in next sc, ch 2; join with sl st in top of Beg-Popcorn.

Fasten off.

FLOWERS 32-45

Make same as Flower 16, following diagram for yarn color and for where to join.

HALF FLOWER 2

With H, ch 4; join with sl st in first ch to make a ring.

Row 1 (WS): Ch 1, 4 sc in ring.

Row 2: Turn, Beg-Popcorn in first sc, sl st in top right Popcorn of Flower 30, ch 2, Popcorn in next sc, sl st in join between Flower 30 and Flower 45, ch 2, Popcorn in next sc, sl st in top right Popcorn of Flower 45, ch 2, Popcorn in next sc.

Fasten off.

Continue to make and join Flowers, Half Flowers, and Corner Flowers in the same way that previous flowers were made and joined, following diagram for yarn color and for where to join, until all Flowers have been made and joined.

FINISHING

Border

From RS, join A with a sl st in any corner ch-2 sp or ring on outside edge of Blankie.

Rnd 1 (RS): Ch 1, work sc evenly spaced around 2 sides of Blankie, working 5 sc in corner and 2 or more sc in each ch-2 sp as needed; change to D in last st, then continue border around remaining 2 sides of Blankie; join with sl st in first sc.

Fasten off.

For thousands of free patterns, visit our website www.LionBrand.com

To order visit our website www.lionbrand.com or call: (800) 258-YARN (9276) any time!

Copyright ©1998-2017 Lion Brand Yarn Company, all rights reserved.

No pattern or other material may be reproduced -- mechanically, electronically, or by any other means, including photocopying - without written permission of Lion Brand Yarn Company.

Rnd 2: From RS, join G with a sl st in first st of Rnd 1 of border, sc in each sc around 2 sides of Blankie, working 3 sc in center sc at each corner; change to F in last st and continue border around remaining 2 sides; join with sl st in first sc. Fasten off.

Rnd 3: From RS, join C with a sl st in first st of Rnd 2, ch 1, rev sc in same st, *ch 1, sk next sc, rev sc in next sc; rep from * around 2 sides, changing to E in last st to continue border around remaining 2 sides; join with sl st in first sc. Fasten off.

Weave in ends.

ABBREVIATIONS

beg = begin(ning)(s)

ch = chain

ch-sp(s) = chain space(s) previously made

dc = double crochet

rep = repeat

rnd = round

RS = right side

sc = single crochet

sk = skip

sl st = slip stitch

st(s) = stitch(es)

WS = wrong side

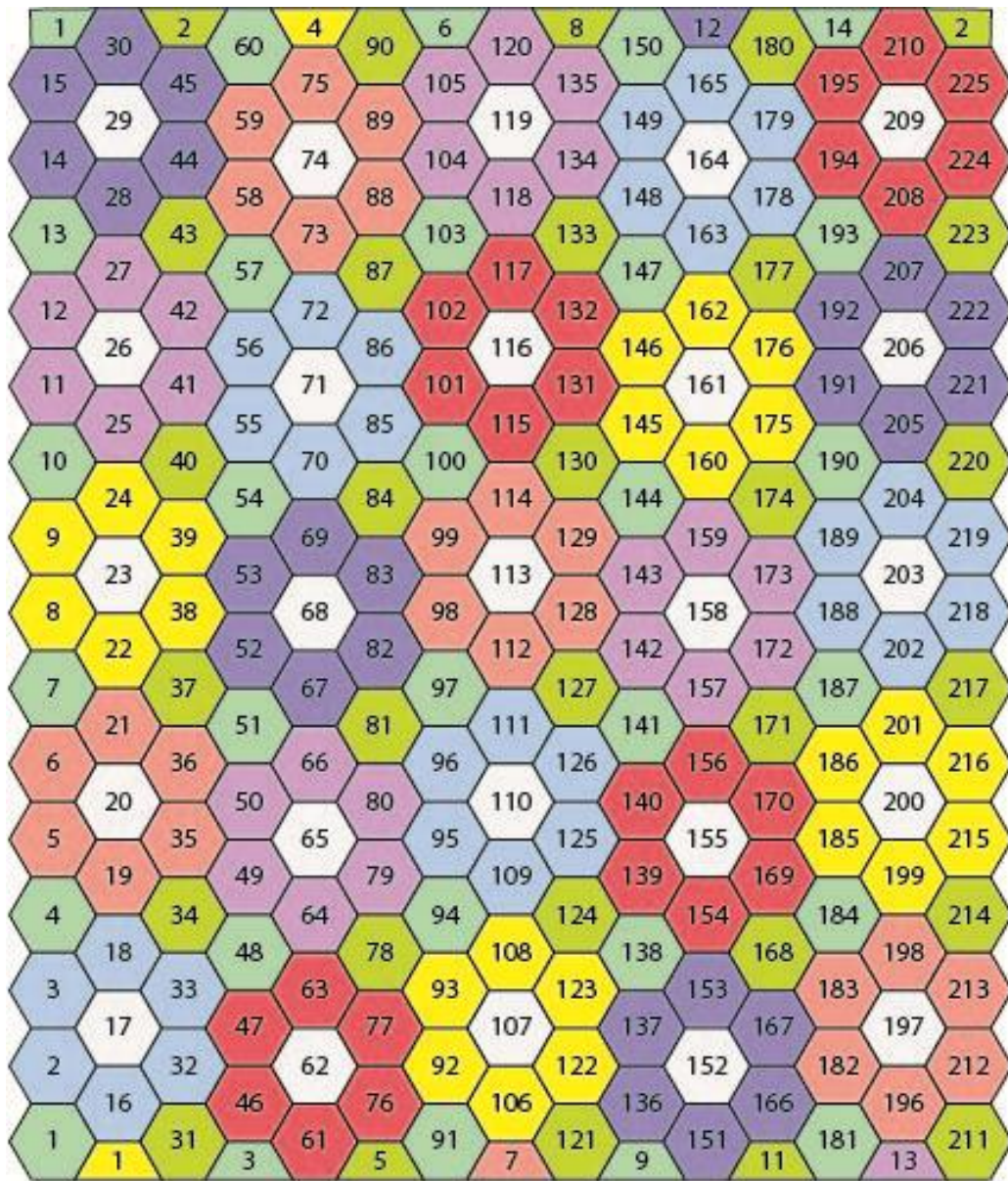
Every effort has been made to produce accurate and complete instructions. We cannot be responsible for variance of individual crafters, human error, or typographical mistakes.

For thousands of free patterns, visit our website www.LionBrand.com

To order visit our website www.lionbrand.com or call: (800) 258-YARN (9276) any time!

Copyright ©1998-2017 Lion Brand Yarn Company, all rights reserved.

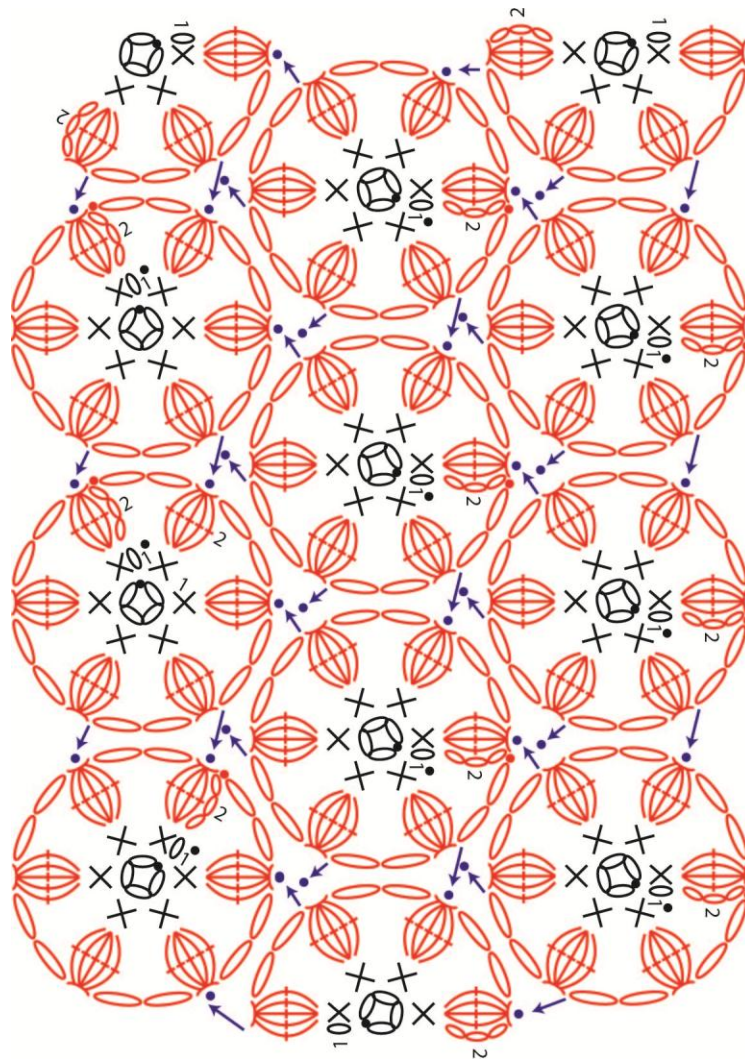
No pattern or other material may be reproduced -- mechanically, electronically, or by any other means, including photocopying - without written permission of Lion Brand Yarn Company.






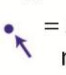


COLOR KEY	
	#098 Fisherman (A)
	#115 Light Blue (B)
	#139 Rose Shocking (C)
	#159 Lemon (D)
	#183 Periwinkle (E)
	#104 Pink Grapefruit (F)
	#191 Lilac (G)
	#175 Radiant Lime (H)
	#169 Pistachio (I)

SYMBOL KEY	
	= Flower
	= Corner Flower
	= Half Flower

For thousands of free patterns, visit our website www.LionBrand.com
 To order visit our website www.lionbrand.com or call: (800) 258-YARN (9276) any time!
 Copyright ©1998-2017 Lion Brand Yarn Company, all rights reserved.
 No pattern or other material may be reproduced -- mechanically, electronically, or by any other means, including photocopying - without written permission of Lion Brand Yarn Company.



KEY	
	= chain (ch)
	= slip stitch (sl st)
	= single crochet (sc)
	= Beg-Popcorn
	= Popcorn
	= sl st in Popcorn of neighboring Flower

For thousands of free patterns, visit our website www.LionBrand.com
 To order visit our website www.lionbrand.com or call: (800) 258-YARN (9276) any time!
 Copyright ©1998-2017 Lion Brand Yarn Company, all rights reserved.
 No pattern or other material may be reproduced -- mechanically, electronically, or by any other means, including photocopying - without written permission of Lion Brand Yarn Company.