



Free Crochet Pattern
Lion Brand®
LB Collection® Superwash Merino
Woodland Shrug
Pattern Number: L70282
Designed by Teresa Chorzepa



SKILL LEVEL – Easy

SIZE

About 38 x 44 in. (96.5 x 112 cm), before folding and seaming

MATERIALS

- Lion Brand® LB Collection® Superwash Merino (Art. #486)
 - 127 Mahogany 6 balls
- Lion Brand® crochet hook size F-5 (3.75 mm)
- Lion Brand® stitch markers
- Lion Brand® large-eyed blunt needle



GAUGE

6 pattern reps = about 6 1/2 in. (16.5 cm) and 8 rows = about 3 1/4 in. (8.5 cm) over Rows 3-6 of Lacy Section.

Notes: 1 pattern rep consists of a 3-dc group and the following ch-2 sp in Rows 2, 4, and 6. 1 pattern rep consists of a 5-dc group and the following sc in Rows 3 and 5.

18 dc + 11 rows = about 4 in. (10 cm).
BE SURE TO CHECK YOUR GAUGE.

NOTES

1. Shrug is made in one piece, and then seamed.
2. The first half of the Shrug is worked in a Lacy pattern; the second half is worked in double crochet.
3. Shrug is stretchy and will fit a range of sizes.
4. For those who find a visual helpful, we've included a stitch diagram of the Lacy pattern.

SHRUG

Ch 178.

Lacy Section

Row 1 (RS): Dc in 4th ch from hook (3 skipped ch count as first dc) and in each ch across – you will have 176 dc in this row.

Row 2: Ch 3 (counts as dc), turn, skip first st, dc in next st, *ch 2, sk next 2 sts, dc in next 3 sts; rep from * to last 4 sts, ch 2, sk next 2 sts, dc in next st, dc in top of beg ch-3 – 34 pattern reps (the first 2-dc group and following ch-2 sp plus the last 2-dc group count as one more rep)

Row 3: Ch 1, turn, sc in first st, *sk next st, 5 dc in next ch-2 space, sk next st, sc in next st; rep from * across working last sc in top of beg ch-3 – Thirty-five 5-dc groups and 36 sc.

Row 4: Ch 5 (counts as tr, ch 1), turn, sk first 2 sts, dc in next 3 sts, *ch 2, sk next 3 sts, dc in next 3 sts; rep from * to last 2 sts, ch 1, sk next st, tr in last st – Thirty-five 3-dc groups, 34 ch-2 spaces, 2 ch-1 spaces, and 1 tr at beg and end of row.

For thousands of free patterns, visit our website www.LionBrand.com

To order visit our website www.lionbrand.com or call: (800) 258-YARN (9276) any time!

Copyright ©1998-2017 Lion Brand Yarn Company, all rights reserved.

No pattern or other material may be reproduced -- mechanically, electronically, or by any other means, including photocopying - without written permission of Lion Brand Yarn Company.

Row 5: Ch 3 (counts as dc) turn, sk first st, 2 dc in first ch-1 sp, sk next st, sc in next st, sk next st, *5 dc in next ch-2 sp, sk next st, sc in next st, sk next st; rep from * to beg ch-5, 2 dc in beg ch-sp, dc in 4th ch of beg ch-5 – Thirty-four 5-dc groups, 36 sc, and a 3-dc group at beg and end of row.

Row 6: Ch 3 (counts as dc), turn, sk first st, dc in next st, *ch 2, sk next 3 sts, dc in next 3 sts; rep from * to last 5 sts, ch 2, sk next 3 sts, dc in next st, dc in top of beg ch-3 – Thirty-four 3-dc groups, 35 ch-2 sps, and a 2-dc group at beg and end of row.

Rows 7-54: Rep Rows 3-6 for 12 more times.

Double Crochet Section

Row 55 (RS): Ch 3 (counts as dc), turn, sk first st, dc in next st, *2 dc in next ch-2 sp, dc in next 3 dc; rep from * to last ch-2 sp, 2 dc in last ch-2 sp, dc in next dc, dc in top of beg ch-3 – 176 dc.

Row 56: Ch 3 (counts as dc), turn, sk first st, dc in each st across working last dc in top of beg ch-3.

Rep last row until piece measures about 44 in. (112 cm) from beg.

Fasten off.

FINISHING

Following diagram, fold piece in half to measure 22 x 38 in. (56 x 96.5 cm).

Place markers on each of the 22 in. (56 cm) sides, 7 in. (18 cm) below fold for armholes.

Sew sides from markers down to lower edge.

Weave in ends.

ABBREVIATIONS

beg = begin(ning)

ch = chain

ch-sp(s) = chain space(s) previously made

dc = double crochet

rep(s) = repeat(s)

RS = right side

sc = single crochet

sk = skip

st(s) = stitch(es)

tr = treble (triple) crochet

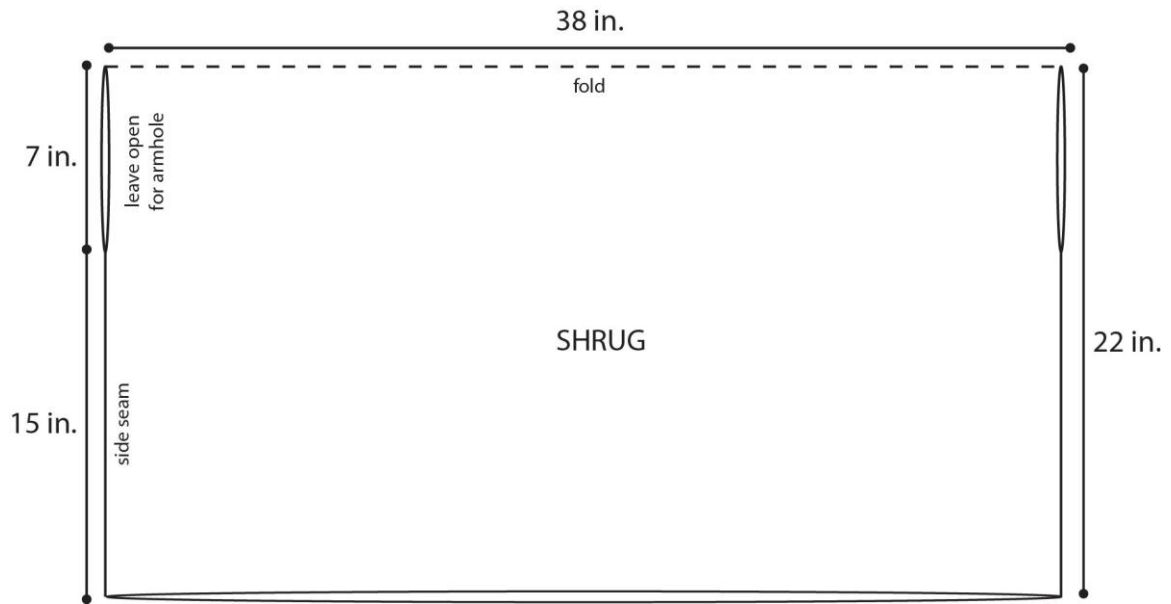
Every effort has been made to produce accurate and complete instructions. We cannot be responsible for variance of individual crafters, human error, or typographical mistakes.

For thousands of free patterns, visit our website www.LionBrand.com

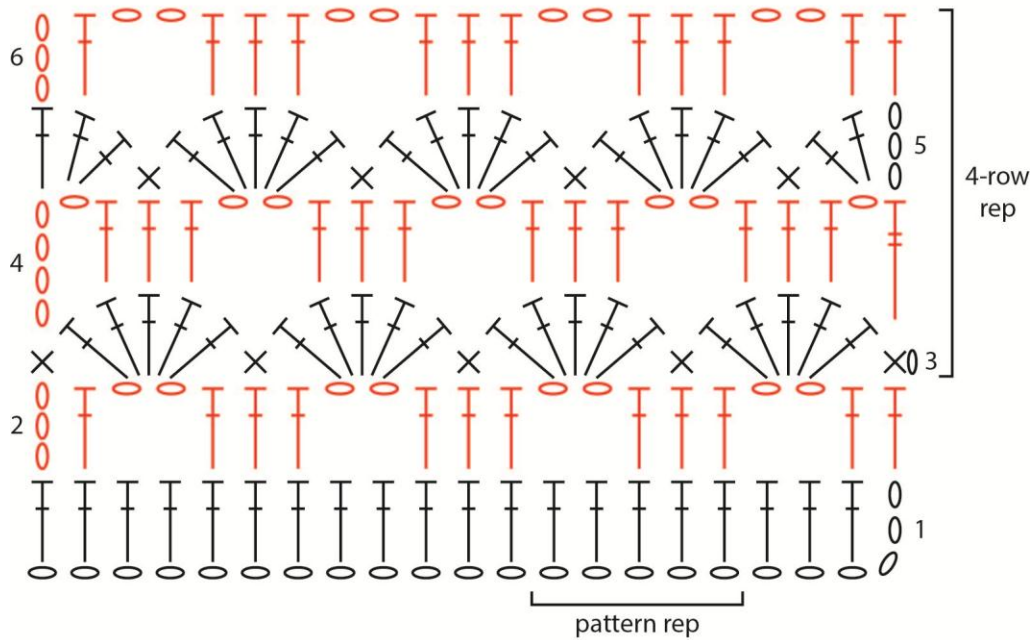
To order visit our website www.lionbrand.com or call: (800) 258-YARN (9276) any time!

Copyright ©1998-2017 Lion Brand Yarn Company, all rights reserved.

No pattern or other material may be reproduced -- mechanically, electronically, or by any other means, including photocopying - without written permission of Lion Brand Yarn Company.



Lacy Pattern



KEY	
○	= chain (ch)
×	= single crochet (sc)
┆	= double crochet (dc)
┆┆	= treble crochet (tr)