



Free Knitting Pattern
Lion Brand®
Touch of Alpaca™ Bonus Bundle®
Matilda Cowl
Pattern Number: L70139
Designed by Teresa Chorzepa



SKILL LEVEL – Easy

SIZE

About 10 x 32 in. (25.5 x 81.5 cm), before seaming

MATERIALS

- Lion Brand® Touch of Alpaca™ Bonus Bundle® (Art. #124)
 - 146 Purple Aster 1 ball
- Lion Brand® knitting needles size 9 (5.5 mm)
- Lion Brand® cable needle
- Lion Brand® stitch markers
- Lion Brand® large-eyed blunt needle



GAUGE

16 sts = about 4 in. (10 cm) over Rows 1-6.
BE SURE TO CHECK YOUR GAUGE.

STITCH EXPLANATION

3/3 LC (3 over 3 left cross) Slip 3 sts to cable needle and hold in front, k3, then k3 from cable needle.

NOTES

1. Cowl is worked in one piece with easy cables, then seamed.
2. The cable pattern can be worked by following the written instructions or by reading the chart. If working from the chart, read RS rows from right to left and WS rows from left to right.

COWL

Cast on 42 sts.

Row 1 (WS): K6, place marker (pm), p6, pm, k to end of row.

Row 2: K to marker, slip marker (sm), 3/3 LC, sm, k to end of row.

Row 3: K to marker, sm, p6, sm, k to end of row.

Row 4: Knit across, slipping markers as you come to them.

Rows 5 and 6: Rep Rows 3 and 4.

Rows 7-18: Rep Rows 1-6 twice, slipping markers as you come to them.

Row 19: K to marker, sm, p6, sm, k6, pm, p6, pm, k to end of row.

Row 20: K to marker, sm, 3/3 LC, sm, k6, sm, 3/3 LC, sm, k to end of row.

Row 21: K to marker, sm, p6, sm, k6, sm, p6, sm, k to end of row.

Row 22: Knit across, slipping markers as you come to them.

Rows 23 and 24: Rep Rows 21 and 22.

Rep Rows 19-24 until piece measures about 32 in. (81.5 cm) from beginning, end with a Row 21 as the last row you work.

Bind off.

For thousands of free patterns, visit our website www.LionBrand.com

To order visit our website www.lionbrand.com or call: (800) 258-YARN (9276) any time!

Copyright ©1998-2018 Lion Brand Yarn Company, all rights reserved.

No pattern or other material may be reproduced -- mechanically, electronically, or by any other means, including photocopying - without written permission of Lion Brand Yarn Company.

FINISHING

Following diagram, seam piece to make the Cowl.

Weave in ends.

ABBREVIATIONS

k = knit

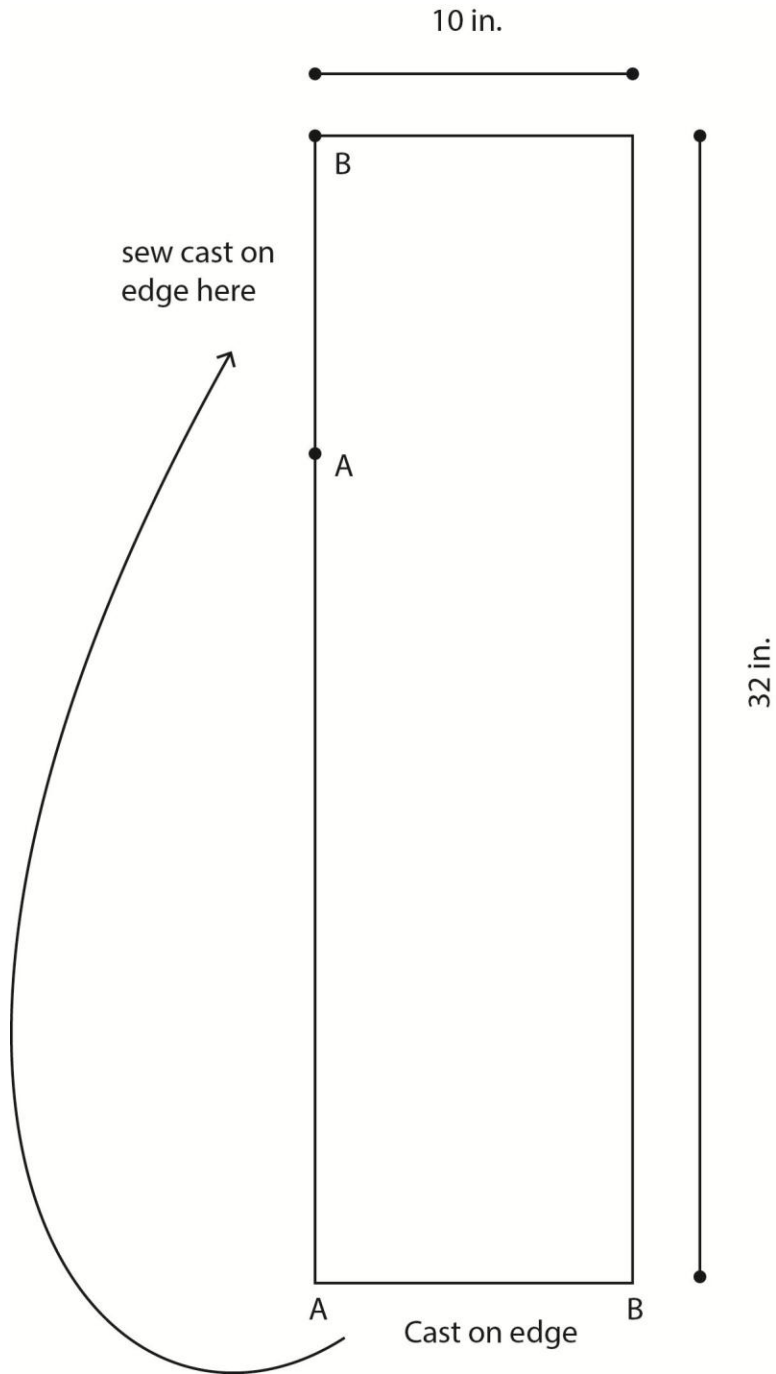
p = purl

rep = repeat

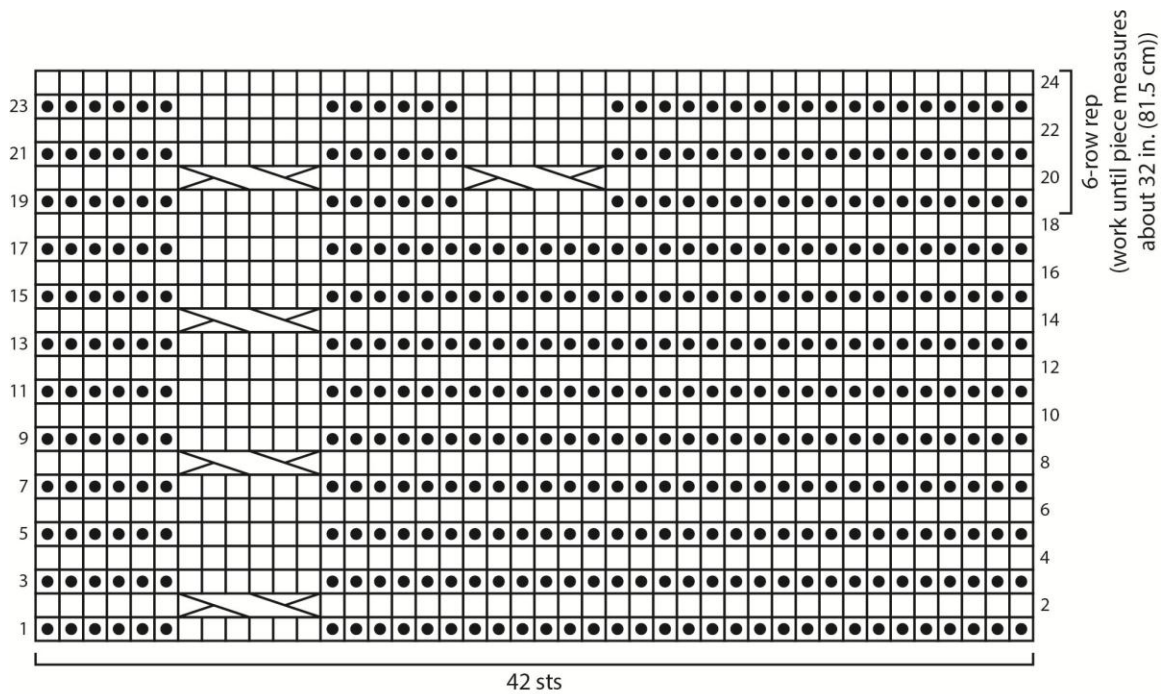
RS = right side

WS = wrong side

Every effort has been made to produce accurate and complete instructions. We cannot be responsible for variance of individual crafters, human error, or typographical mistakes.



Lion Brand® Touch of Alpaca™ Bonus Bundle® Matilda Cowl
 Pattern Number: L70139



Key	
<input type="checkbox"/>	knit on RS, purl on WS
<input checked="" type="checkbox"/>	purl on RS, knit on WS
	3/3 LC (3 over 3 left cross)

For thousands of free patterns, visit our website www.LionBrand.com
 To order visit our website www.lionbrand.com or call: (800) 258-YARN (9276) any time!
 Copyright ©1998-2018 Lion Brand Yarn Company, all rights reserved.
 No pattern or other material may be reproduced -- mechanically, electronically, or by any other means, including photocopying - without written permission of Lion Brand Yarn Company.