



Free Knitting Pattern
Lion Brand® Hometown USA®
Cropped Drop Stitch Pullover
Pattern Number: L70352



SKILL LEVEL – Intermediate

SIZES

XS/S (M/L, 1X/2X)

Finished Bust 39 (46, 54) in. (99 (117, 137) cm)

Finished Length 16 1/2 (18, 19 1/2) in. (42 (45.5, 49.5) cm)

Finished Waist 31 (38, 46) in. (78.5 (96.5, 117) cm)

Note: Pattern is written for smallest size with changes for larger sizes in parentheses. When only one number is given, it applies to all sizes. To follow pattern more easily, circle all numbers pertaining to your size before beginning.

MATERIALS

- Lion Brand® Hometown USA® (Art. #135)
 - 101 Providence Pink 5 (7, 9) balls
- Lion Brand® circular knitting needle size 11 (8 mm) 29 in. (73.5 cm) long
- Lion Brand® stitch holders
- Lion Brand® stitch markers
- Lion Brand® large-eyed blunt needle



GAUGE

10 sts + 14 rows = about 4 in. (10 cm) in St st (k on RS, p on WS).

BE SURE TO CHECK YOUR GAUGE

STITCH EXPLANATIONS

M1 (make 1) An increase worked by lifting the horizontal strand lying between needles and placing it onto left needle. Knit this new stitch through the back loop – 1 st increased.

ssk (slip, slip, knit) Slip next 2 sts as if to knit, one at a time, to right needle; insert left needle into fronts of these 2 sts and knit them together – 1 st decreased.

NOTES

1. Pullover is worked sideways in one piece from the left sleeve across to right sleeve.
2. A circular needle is used to accommodate the number of stitches. Work back and forth in rows on the circular needle as if working on straight needles.
3. When binding off, sts are dropped to create a “ladder” effect.
4. The piece is folded in half and seamed following a diagram.

For thousands of free patterns, visit our website www.LionBrand.com

To order visit our website www.lionbrand.com or call: (800) 258-YARN (9276) any time!

Copyright ©1998-2018 Lion Brand Yarn Company, all rights reserved.

No pattern or other material may be reproduced -- mechanically, electronically, or by any other means, including photocopying - without written permission of Lion Brand Yarn Company.

PULLOVER

Left Sleeve

Cast on 25 sts.

Work in St st (k on RS, p on WS) until piece measures about 12 1/2 (11, 10) in. (32 (28, 25.5) cm) from beg, end with a WS row as the last row you work.

Shape Sleeve

Row 1 (RS): K2, M1, k to last 2 sts, M1, k2 – you will have 27 sts in this row.

Row 2: Purl.

Rep the last 2 rows 9 (11, 13) more times – you will have 45 (49, 53) sts after all increases have been made.

Shape Body

Row 1 (RS): Cast on 4 (4, 5) sts, k to end of row – 49 (53, 58) sts.

Row 2: Cast on 4 (4, 5) sts, p to end of row – 53 (57, 63) sts.

Rows 3 and 4: Rep Rows 1 and 2 – 61 (65, 73) sts in Row 4.

Row 5: Cast on 4 (5, 5) sts, k to end of row – 65 (70, 78) sts.

Row 6: Cast on 4 (5, 5) sts, p to end of row – 69 (75, 83) sts.

Row 7: Rep Row 5 – 73 (80, 88) sts.

Row 8: Cast on 4 (5, 5) sts, beg with sts just cast-on, k4 sts, p to last 4 sts, k4 – 77 (85, 93) sts.

Row 9: Knit.

Row 10: K4, p to last 4 sts, k4.

Rep the last 2 rows 1 (4, 7) more times.

Next Row (Increase Row – RS): K37 (41, 45), M1, [k1, M1] twice, k to end of row – 80 (88, 96) sts.

Divide for Neck

Next Row (WS): K4, p33 (37, 41), k3, place rem 40 (44, 48) sts onto a holder for back – 40 (44, 48) sts rem on needle for front.

Front

Row 1 (RS): Knit.

Row 2: K4, p to last 3 sts, k3.

Rep Rows 1 and 2 for 20 more times.

Place these 40 (44, 48) front sts onto a separate holder and cut yarn.

Back

Place 40 (44, 48) back sts from holder onto needle, and join yarn so that you are ready to work a WS row.

Row 1 (WS): K3, p to last 4 sts, k4.

Row 2: Knit.

Rep Rows 1 and 2 for 20 more times.

Rep Row 1 once more.

For thousands of free patterns, visit our website www.LionBrand.com

To order visit our website www.lionbrand.com or call: (800) 258-YARN (9276) any time!

Copyright ©1998-2018 Lion Brand Yarn Company, all rights reserved.

No pattern or other material may be reproduced -- mechanically, electronically, or by any other means, including photocopying - without written permission of Lion Brand Yarn Company.

Rejoin Work

Next Row (RS): K across 40 (44, 48) back sts, then k across 40 (44, 48) sts from front holder – you will have 80 (88, 96) sts at the end of this row.

Next Row (Decrease Row): K4, p33 (37, 41), (p2tog) 3 times, p to last 4 sts, k4 – 77 (85, 93) sts.

Next Row: Knit.

Next Row: K4, p to last 4 sts, k4.

Rep the last 2 rows 1 (4, 7) more times.

Shape Body

Row 1 (RS): Bind off 4 (5, 5) sts, k to end of row – 73 (80, 88) sts.

Row 2: Bind off 4 (5, 5) sts, p to end of row – 69 (75, 83) sts.

Rows 3 and 4: Rep Rows 1 and 2 – 61 (65, 73) sts in Row 4.

Row 5: Bind off 4 (4, 5) sts, k to end of row – 57 (61, 68) sts.

Row 6: Bind off 4 (4, 5) sts, p to end of row – 53 (57, 63) sts.

Rows 7 and 8: Rep Rows 5 and 6 – 45 (49, 53) sts in Row 8.

Place markers at each end of last row.

Shape Right Sleeve

Row 1 (Decrease Row – RS): K1, ssk, k to last 3 sts, k2tog, k1 – 43 (47, 51) sts.

Row 2: Purl.

Rep the last 2 rows 9 (11, 13) more times – 25 sts rem.

Work in St st until piece measures about 18 in. (45.5 cm) from marked row, end with a WS row as the last row you work.

Bind off as follows:

Bind off 9 sts, *drop next st from left hand needle and allow to unravel all the way down to cast-on edge (to make a “ladder”), stretch the st on the right hand needle to about 1 in. (2.5 cm), bind off 3 sts; rep from * once more, bind off to end of row.

FINISHING

Following diagram, fold piece in half. Matching Edge 1 to Edge 2 and Edge 3 to Edge 4, sew side and sleeve seams.

Weave in ends.

ABBREVIATIONS

beg = begin(ing)(s)

k = knit

k2tog = knit 2 stitches together

p = purl

p2tog = purl 2 stitches together

rem = remain(ing)

rep = repeat

RS = right side

st(s) = stitch(es)

St st = Stockinette stitch

WS = wrong side

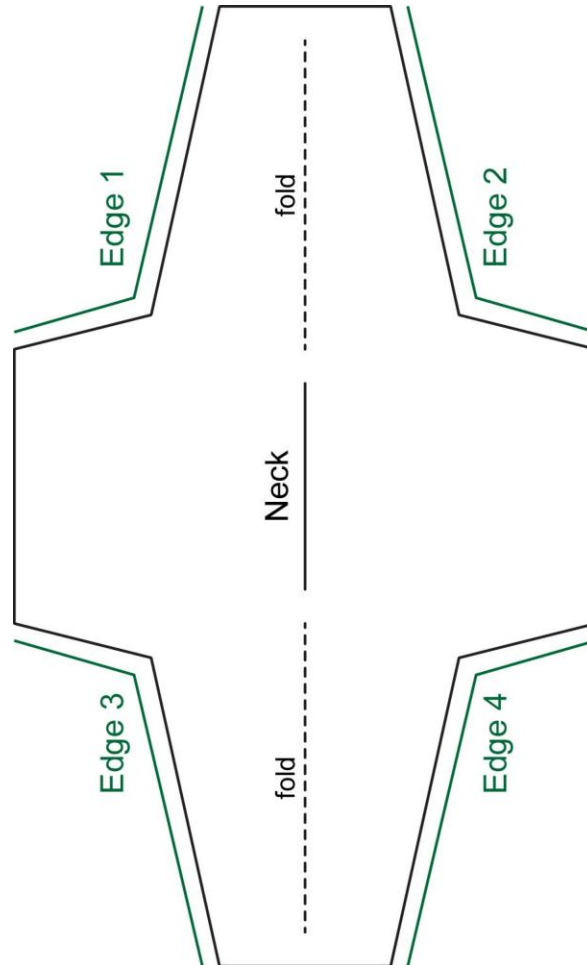
Every effort has been made to produce accurate and complete instructions. We cannot be responsible for variance of individual crafters, human error, or typographical mistakes.

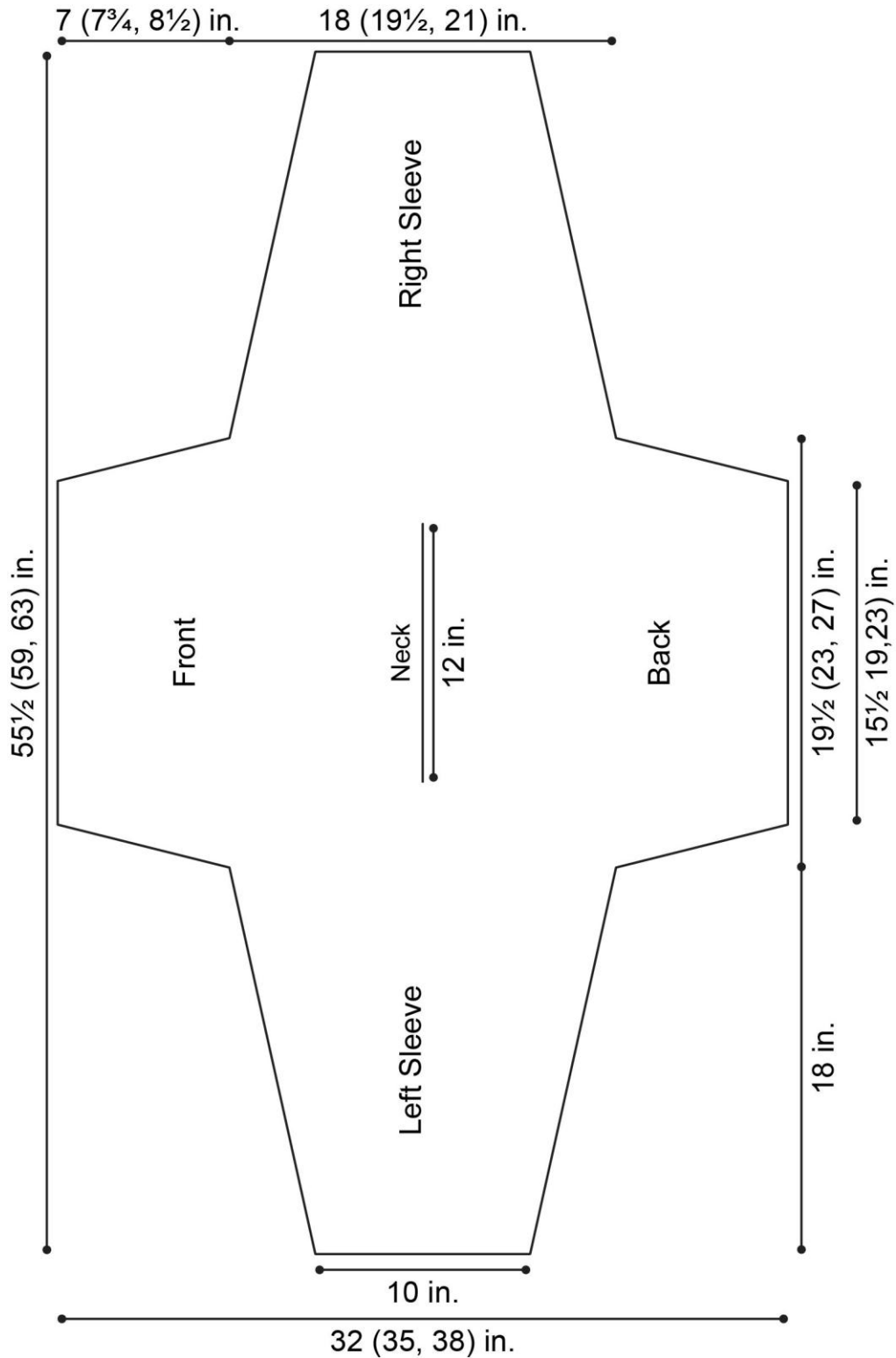
For thousands of free patterns, visit our website www.LionBrand.com

To order visit our website www.lionbrand.com or call: (800) 258-YARN (9276) any time!

Copyright ©1998-2018 Lion Brand Yarn Company, all rights reserved.

No pattern or other material may be reproduced -- mechanically, electronically, or by any other means, including photocopying - without written permission of Lion Brand Yarn Company.





Note: Measurements shown are before sts are dropped during bind off. After sts are dropped piece is about 1 in. (2.5 cm) wider.

For thousands of free patterns, visit our website www.LionBrand.com

To order visit our website www.lionbrand.com or call: (800) 258-YARN (9276) any time!

Copyright ©1998-2018 Lion Brand Yarn Company, all rights reserved.

No pattern or other material may be reproduced -- mechanically, electronically, or by any other means, including photocopying - without written permission of Lion Brand Yarn Company.