



Free Knitting Pattern
Lion Brand® 24/7 Cotton®
Eyelet Top
Pattern Number: L70344
Designed by Vladimir Teriokhin



SKILL LEVEL – Intermediate

SIZES

S/M (L/1X)

Finished Bust About 48 (56) in. (122 (142) cm)

Finished Length About 22 (23 1/2) in. (56 (59.5) cm), not including ribbing.

Note: Pattern is written for smaller size with changes for larger size in parentheses. When only one number is given, it applies to both sizes. To follow pattern more easily, circle all numbers pertaining to your size before beginning.

MATERIALS

- Lion Brand® 24/7 Cotton® (Art. #761)
 - 178 Jade 7 (9) balls
- Lion Brand® stitch markers
- Lion Brand® stitch holders
- Lion Brand® large-eyed blunt needle



ADDITIONAL MATERIALS

Circular knitting needles size 5 (3.75 mm), 16 in. (40.5 cm) long

Circular knitting needles size 5 (3.75 mm), 36 in. (91.5 cm) long

GAUGE

19 sts + 32 1/2 rows = about 4 in. (10 cm) in Texture Eyelet pattern.

BE SURE TO CHECK YOUR GAUGE.

STITCH EXPLANATIONS

kfb (knit in front and back) Knit next st without removing it from left needle, then k through back of same st – 1 st increased.

ssk (slip, slip, knit) Slip next 2 sts as if to knit, one at a time, to right needle; insert left needle into fronts of these 2 sts and knit them tog – 1 st decreased.

ssp (slip, slip, purl) Slip next 2 sts as if to knit, one at a time, to right needle; pass them back to left needle; purl them together through back loops – 1 st decreased.

yo (yarn over)

An increase that also creates a small decorative hole (eyelet) in the fabric, worked as follows:

1. Bring yarn to front, between the needles.
2. Take yarn to back, over the right needle. This creates the new st. You are now ready to proceed with the next st as instructed.

PATTERN STITCHES

K1, p1 Rib worked in rows (worked over an even number of sts)

Row 1: *K1, p1; rep from * to end of row.

Row 2: K the knit sts and p the purl sts.

Rep Row 2 for K1, p1 Rib worked in rows.

For thousands of free patterns, visit our website www.LionBrand.com

To order visit our website www.lionbrand.com or call: (800) 258-YARN (9276) any time!

Copyright ©1998-2018 Lion Brand Yarn Company, all rights reserved.

No pattern or other material may be reproduced -- mechanically, electronically, or by any other means, including photocopying - without written permission of Lion Brand Yarn Company.

K1, p1 Rib worked in rnds (worked over an even number of sts)

Rnd 1: *K1, p1; rep from * to end of rnd.

Rep Rnd 1 for K1, p1 Rib worked in rnds.

Texture Eyelet Pattern (worked over a multiple of 6 sts)

Row 1 (RS): Knit.

Row 2: *P1, yo, ssp, p2tog, yo, p1; rep from * across.

Row 3: *K1, p4, k1; rep from * across.

Row 4: *P1, k4, p1; rep from * across.

Row 5: Rep Row 3.

Row 6: Rep Row 2.

Row 7: Knit.

Row 8: Purl.

Rep Rows 1-8 for Texture Eyelet pattern.

NOTES

1. Body of Top is worked in one piece from side to side beginning at one armhole edge in a Texture Eyelet pattern.
2. Texture Eyelet pattern can be worked following the written instructions or a chart. When working from chart, read RS rows from right to left and WS rows from left to right.
3. Each row begins and ends with a Garter st (k every st) selvedge st. Selvedge sts create a neat edge for seaming and picking up sts.
4. Work back and forth in rows on the circular needle as if working on straight needles.
5. Stitches are picked up along lower and armhole edges, and around neck edge for ribbing.
6. When you see 'work in pattern as established' in the instructions, this means to work the next row of the pattern sts, lining up sts as in previous rows.
7. To continue in an established pattern over new sts, that have been cast-on or increased, you may need to work a partial repeat of the pattern (fewer than 6 sts). When working a partial repeat, take care to work an equal number of increases (yo) and decreases (p2tog or ssp) so that the st count remains the same.

BODY

With longer needle, beg at one armhole edge, cast on 78 (90) sts.

Row 1 (RS): K1 (selvedge st), work Row 1 of Texture Eyelet pattern over first 36 (42) sts, place marker (pm), k4, pm, work Row 1 of Texture Eyelet pattern to last st, k1 (selvedge st) – you will have 37 (43) sts on each side of markers.

Row 2 (WS): K1 (selvedge st), work Row 2 of Texture Eyelet pattern to marker, slip marker (sm), p4, sm, work Row 2 of Texture Eyelet pattern to last st, k1 (selvedge st).

Row 3: K1, work Row 3 of Texture Eyelet pattern to marker, sm, k4, sm, work Row 3 of Texture Eyelet pattern to last st, k1.

For thousands of free patterns, visit our website www.LionBrand.com

To order visit our website www.lionbrand.com or call: (800) 258-YARN (9276) any time!

Copyright ©1998-2018 Lion Brand Yarn Company, all rights reserved.

No pattern or other material may be reproduced -- mechanically, electronically, or by any other means, including photocopying - without written permission of Lion Brand Yarn Company.

Row 4: K1, work Row 4 of Texture Eyelet pattern to marker, sm, p4, sm, work Row 4 of Texture Eyelet pattern to last st, k1.

Shape Shoulder and Side Edge

Row 5 (Increase Row – RS): K1, work in Texture Eyelet pattern as established to 1 st before marker, kfb, sm, k to next marker, sm, kfb, work in Texture Eyelet pattern as established to last st, k1 – you will have 80 (92) sts in this row.

Note: Work the additional sts into the Texture Eyelet pattern.

Row 6 (WS): Cast on 3 sts, beg over sts just cast on, k1, work in Texture Eyelet pattern as established to marker, sm, p to next marker, sm, work in Texture Eyelet pattern as established to last st, k1 – 83 (95) sts.

Row 7: Cast on 3 sts, beg over sts just cast on, k1, work in Texture Eyelet pattern as established to marker, sm, k to next marker, sm, work in Texture Eyelet pattern as established to last st, k1 – 86 (98) sts.

Rows 8 and 9: Rep Rows 6 and 7 – 92 (104) sts in Row 9.

Row 10: Cast on 4 sts, beg over sts just cast on, k1, work in Texture Eyelet pattern as established to marker, sm, p to next marker, sm, work in Texture Eyelet pattern as established to last st, k1 – 96 (108) sts.

Row 11 (Increase Row – RS): Cast on 4 sts, beg over sts just cast on, k1, work in Texture Eyelet pattern as established to 1 st before marker, kfb, sm, k to next marker, sm, kfb, work in Texture Eyelet pattern as established to last st, k1 – 102 (114) sts.

Row 12: Cast on 5 sts, beg over sts just cast on, k1, work in Texture Eyelet pattern as established to marker, sm, p to next marker, sm, work in Texture Eyelet pattern as established to last st, k1 – 107 (119) sts.

Row 13: Cast on 5 sts, beg over sts just cast on, k1, work in Texture Eyelet pattern as established to marker, sm, k to next marker, sm, work in Texture Eyelet pattern as established to last st, k1 – 112 (124) sts.

Row 14: Cast on 38 sts, beg over sts just cast on, k1, work in Texture Eyelet pattern as established to marker, sm, p to next marker, sm, work in Texture Eyelet pattern as established to last st, k1 – 150 (162) sts.

Row 15: Cast on 38 sts, beg over sts just cast on, k1, work in Texture Eyelet pattern as established to marker, sm, k to next marker, sm, work in Texture Eyelet pattern as established to last st, k1 – 188 (200) sts.

Row 16: K1, work in Texture Eyelet pattern as established to marker, sm, work in St st (k on RS, p on WS) to next marker, sm, work in Texture Eyelet pattern as established to last st, k1.

Row 17: Rep Row 5 – 190 (202) sts.

Rows 18-22: Rep Row 16.

Row 23: Rep Row 5 – 192 (204) sts.

Rows 24-71 (83): Rep Rows 18-23 for 8 (10) more times – 208 (224) sts in last row worked.

Row 72 (84): Rep Row 16.

Divide for Front and Back

Row 1 (RS): K1, work in Texture Eyelet pattern as established to marker, remove marker, k2, slip rem 104 (112) sts onto a st holder for back – 104 (112) sts rem on needle for front.

Shape Front Neck

Row 2 (WS): Bind off 2 sts, work in Texture Eyelet pattern as established to last st, k1 – 102 (110) sts.

Row 3: K1, work in Texture Eyelet pattern as established to last st, k1.

Rows 4-7: Rep Rows 2 and 3 for 2 more times – 98 (106) sts in last row worked.

Row 8: Bind off 1 st, work in Texture Eyelet pattern as established to last st, k1 – 97 (105) sts.

Row 9: K1, work in Texture Eyelet pattern as established to last st, k1.

Rows 10-19 (23): Rep Rows 8 and 9 for 5 (7) more times – 92 (98) sts in last row worked.

Next 22 Rows: K1, work in Texture Eyelet pattern as established to last st, k1.

Next Row (WS): Cast on 1 st, work in Texture Eyelet pattern as established to last st, k1 – 93 (99) sts.

Next Row: K1, work in Texture Eyelet pattern as established to last st, k1.

Next 10 (14) Rows: Rep last 2 rows 5 (7) more times – 98 (106) sts in last row worked.

Next Row: Cast on 2 sts, work in Texture Eyelet pattern as established to last st, k1 – 100 (108) sts.

Next Row: K1, work in Texture Eyelet pattern as established to last st, k1.

Next 4 Rows: Rep last 2 rows 2 more times – 104 (112) sts in last row worked. Place front sts on a holder.

Shape Back Neck

Return the 104 (112) back sts to needle so that you are ready to work a RS row.

Row 1 (RS): Bind off 1 st, remove marker, work in Texture Eyelet pattern as established to last st, k1 – 103 (111) sts.

Row 2: K1, work in Texture Eyelet pattern as established to last st, k1.

Rows 3-6 (10): Rep Rows 1 and 2 for 2 (4) more times – 101 (107) sts in last row worked.

Next 46 Rows: K1, work in Texture Eyelet pattern as established to last st, k1.

Next Row: Cast on 1 st, work in Texture Eyelet pattern as established to last st, k1 – 102 (108) sts.

Next Row: K1, work in Texture Eyelet pattern as established to last st, k1.

Next 4 (8) Rows: Rep last 2 rows 2 (4) more times – 104 (112) sts in last row worked.

Next Row: K1, work in Texture Eyelet pattern as established to last st, k1.

Rejoin Back and Front

Row 1 (WS): K1, work in Texture Eyelet pattern as established to last 2 sts of back, pm, p2; working over front sts on holder, p2, pm, work in Texture Eyelet pattern as established to last st, k1 – 208 (224) sts.

For thousands of free patterns, visit our website www.LionBrand.com

To order visit our website www.lionbrand.com or call: (800) 258-YARN (9276) any time!

Copyright ©1998-2018 Lion Brand Yarn Company, all rights reserved.

No pattern or other material may be reproduced -- mechanically, electronically, or by any other means, including photocopying - without written permission of Lion Brand Yarn Company.

Row 2 (Decrease Row – RS): K1, work in Texture Eyelet pattern as established to 2 sts before marker, k2tog, sm, k4, sm, ssk, work in Texture Eyelet pattern as established to last st, k1 – 206 (222) sts.

Rows 3-7: K1, work in Texture Eyelet pattern as established to marker, sm, work in St st to next marker, sm, work in Texture Eyelet pattern as established to last st, k1.

Row 8: Rep Row 2 – 204 (220) sts.

Rows 9-56 (68): Rep Rows 3-8 for 8 (10) more times – 188 (200) sts in last row worked.

Next Row (WS): Rep Row 3.

Next Row: Bind off 38 sts, work in Texture Eyelet pattern as established to marker, sm, k to next marker, sm, work in Texture Eyelet pattern as established to last st, k1 – 150 (162) sts.

Next Row: Bind off 38 sts, work in Texture Eyelet pattern as established to marker, sm, p to next marker, sm, work in Texture Eyelet pattern as established to last st, k1 – 112 (124) sts.

Next 2 Rows: Bind off 5 sts, work in Texture Eyelet pattern as established to marker, sm, work in St st to next marker, sm, work in Texture Eyelet pattern as established to last st, k1 – 102 (114) sts in last row worked.

Next Row (Decrease Row – RS): Bind off 4 sts, work in Texture Eyelet pattern as established to 2 sts before marker, k2tog, sm, k to next marker, sm, ssk, work in Texture Eyelet pattern as established to last st, k1 – 96 (108) sts in last row worked.

Next Row: Bind off 4 sts, work in Texture Eyelet pattern as established to marker, sm, p to next marker, sm, work in Texture Eyelet pattern as established to last st, k1 – 92 (104) sts in last row worked.

Next 4 Rows: Bind off 3 sts, work in Texture Eyelet pattern as established to marker, sm, work in St st to next marker, sm, work in Texture Eyelet pattern as established to last st, k1 – 80 (92) sts in last row worked.

Next Row (Decrease Row – RS): K1, work in Texture Eyelet pattern as established to 2 sts before marker, k2tog, sm, k to next marker, sm, ssk, work in Texture Eyelet pattern as established to last st, k1 – 78 (90) sts.

Next 4 Rows: K1, work in Texture Eyelet pattern as established to marker, sm, work in St st to next marker, sm, work in Texture Eyelet pattern as established to last st, k1.

Bind off.

FINISHING

Lower Ribbing

From RS with longer needle, pick up and k128 (148) sts evenly spaced along lower edge of front.

Rows 1-5: K1 (selvage), work in K1, p1 Rib worked in rows to last st, k1 (selvage).

Bind off.

Rep along lower edge of back.

For thousands of free patterns, visit our website www.LionBrand.com

To order visit our website www.lionbrand.com or call: (800) 258-YARN (9276) any time!

Copyright ©1998-2018 Lion Brand Yarn Company, all rights reserved.

No pattern or other material may be reproduced -- mechanically, electronically, or by any other means, including photocopying - without written permission of Lion Brand Yarn Company.

Neck Ribbing

From RS with shorter needle, pick up and k84 (94) sts evenly spaced around neck edge. Place marker for beg for rnd. Join by working the first st on the left hand needle with the working yarn from the right hand needle.

Rnds 1-3: Work in K1, p1 Rib worked in rnds.
Bind off.

Ribbed Sleeves

From RS with longer needle, pick up and k76 (88) sts evenly spaced along one armhole edge.

Row 1: K1 (selvedge), work in K1, p1 Rib worked in rows to last st, k1 (selvedge).

Rep Row 1 for 6 in. (15 cm).

Bind off.

Rep along second armhole edge.

Fold piece in half along 4-st St st shoulder line. Sew side and Sleeve seams.

Weave in ends.

ABBREVIATIONS

beg = begin(ning)

k = knit

k2tog = knit 2 stitches together

p = purl

p2tog = purl 2 stitches together

rem = remain(ing)(s)

rep = repeat

rnd(s) = round(s)

RS = right side

st(s) = stitch(es)

St st = Stockinette stitch

WS = wrong side

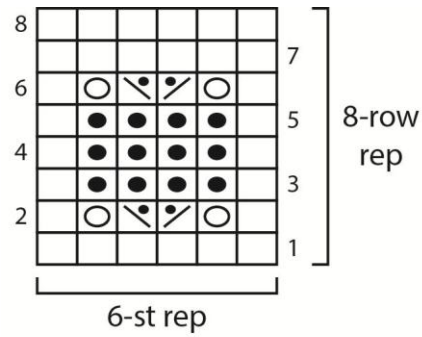
Every effort has been made to produce accurate and complete instructions. We cannot be responsible for variance of individual crafters, human error, or typographical mistakes.

For thousands of free patterns, visit our website www.LionBrand.com

To order visit our website www.lionbrand.com or call: (800) 258-YARN (9276) any time!

Copyright ©1998-2018 Lion Brand Yarn Company, all rights reserved.

No pattern or other material may be reproduced -- mechanically, electronically, or by any other means, including photocopying - without written permission of Lion Brand Yarn Company.



KEY

- knit on RS, purl on WS
- purl on RS, knit on WS
- yarn over
- p2tog (purl 2 stitches together)
- ssp (slip, slip, purl)

