



***Free Crochet Pattern***  
**Lion Brand® Shawl in a Ball®**  
**Milo Shawl**

**Pattern Number: L70304**  
***Designed by Teresa Chorzepa***



## **SKILL LEVEL** – Easy

### **SIZE**

About 14 x 72 in. (35.5 x 283 cm)

### **MATERIALS**

- Lion Brand® Shawl in a Ball® (Art. #828)
  - 214 Zen Azalea 1 ball
- Lion Brand® crochet hook size H-8 (5 mm)
- Lion Brand® large-eyed blunt needle

### **GAUGE**

2 pattern reps = about 4 in. (10 cm).

**Note:** One pattern rep consists of a 3-dc group or dc3tog and the 2 following chsps and dc.

BE SURE TO CHECK YOUR GAUGE.

### **STITCH EXPLANATIONS**

**beg-dc2tog (beginning dc 2 sts together)** Ch 2, yarn over, sk first st, insert hook in next st and draw up a loop, [yarn over and draw through 2 loops on hook] **2 times** – 1 st decreased.

**end-dc2tog (ending dc 2 sts together)** Yarn over, insert hook in next st and draw up a loop, yarn over and draw through 2 loops on hook; yarn over, insert hook in top of beg-ch and draw up a loop, yarn over and draw through 2 loops on hook, yarn over and draw through all 3 loops on hook – 1 st decreased.

**dc3tog (dc 3 sts together)** (Yarn over, insert hook in next st and draw up a loop, yarn over, draw through 2 loops) 3 times, yarn over and draw through all 4 loops on hook – 2 sts decreased.

### **NOTES**

1. Shawl is worked in one piece in a lacy diamonds pattern.
2. For those who find a visual helpful, we've included a stitch diagram.

### **SHAWL**

Ch 60.

**Row 1:** Dc in 4th ch from hook (3 skipped ch count as first dc), ch 2, sk next 3 ch, dc in next ch, \*ch 2, sk next 3 ch, 3 dc in next ch, ch 2, sk 3 ch, dc in next ch; rep from \* to last 4 ch, ch 2, sk next 3 ch, 2 dc in last ch – you will have six 3-dc groups for 6 pattern reps in this row (dc sts and ch-sps at beg and end of row count as 1 more pattern rep, for a total of 7 pattern reps).

For thousands of free patterns, visit our website [www.LionBrand.com](http://www.LionBrand.com)

To order visit our website [www.lionbrand.com](http://www.lionbrand.com) or call: (800) 258-YARN (9276) any time!

Copyright ©1998-2018 Lion Brand Yarn Company, all rights reserved.

No pattern or other material may be reproduced -- mechanically, electronically, or by any other means, including photocopying - without written permission of Lion Brand Yarn Company.

**Row 2:** Turn, beg-dc2tog, \*ch 3, sk next ch-2 sp, dc in next dc, ch 3, sk next ch-2 sp, dc3tog; rep from \* to last 2 ch-2 sps, ch 3, sk next ch-2 sp, dc in next dc, ch 3, sk last ch-2 sp, end-dc2tog.

**Row 3:** Ch 5 (counts as dc, ch 2), turn, sk first ch-3 sp, 3 dc in next dc, \*ch 2, sk next ch-3 sp, dc in next dc3tog, ch 2, sk next ch-3 sp, 3 dc in next dc; rep from \* to last ch-3 sp, ch 2, sk last ch-3 sp, dc in beg-dc2tog – 7 pattern reps.

**Row 4:** Ch 6 (counts as dc, ch 3), turn, sk first ch-2 sp, dc3tog, \*ch 3, sk next ch-2 sp, dc in next dc, ch 3, sk next ch-2 sp, dc3tog; rep from \* to beg ch-sp, ch 3, dc in 3rd ch of beg ch-5.

**Row 5:** Ch 3 (counts as dc), turn, dc in first dc, \*ch 2, sk next ch-3 sp, dc in next dc3tog, ch 2, sk next ch-3 sp, 3 dc in next dc; rep from \* to last 2 ch-sp, ch 2, sk next ch-3 sp, dc in last dc3tog, ch 2, 2 dc in 3rd ch of beg ch-6.

Rep Rows 2-5 until almost all yarn has been used, end with a Row 2 or Row 4 as the last row you work.

Fasten off.

## **FINISHING**

Weave in ends.

## **ABBREVIATIONS**

beg = beg (beginning) ch

= chain

ch-sp(s) = chain space(s) previously

made dc = double crochet rep(s) =

repeat(s) RS = right side sk = skip

st(s) = stitch(es)

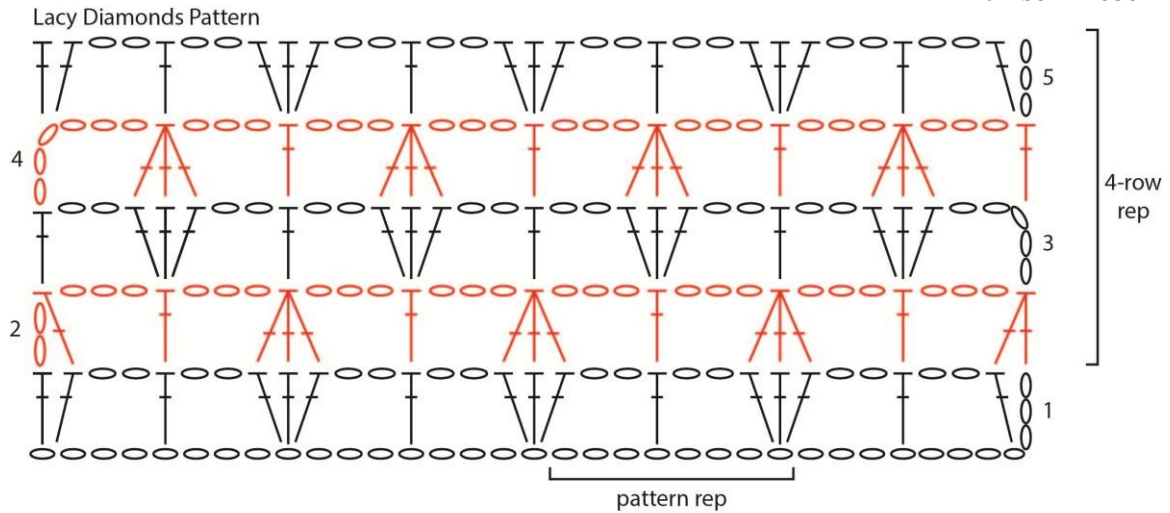
*Every effort has been made to produce accurate and complete instructions. We cannot be responsible for variance of individual crafters, human error, or typographical mistakes.*

For thousands of free patterns, visit our website [www.LionBrand.com](http://www.LionBrand.com)

To order visit our website [www.lionbrand.com](http://www.lionbrand.com) or call: (800) 258-YARN (9276) any time!

Copyright ©1998-2018 Lion Brand Yarn Company, all rights reserved.

No pattern or other material may be reproduced -- mechanically, electronically, or by any other means, including photocopying - without written permission of Lion Brand Yarn Company.



**KEY**

- = chain (ch)
- ⌈ = double crochet (dc)
- ⌈⌈ = double crochet 2 together (dc2tog)
- ⌈⌈ = beginning double crochet 2 together (beg-dc2tog)
- ⌈⌈⌈ = double crochet 3 together (dc3tog)

For thousands of free patterns, visit our website [www.LionBrand.com](http://www.LionBrand.com)  
 To order visit our website [www.lionbrand.com](http://www.lionbrand.com) or call: (800) 258-YARN (9276) any time!  
 Copyright ©1998-2018 Lion Brand Yarn Company, all rights reserved.  
 No pattern or other material may be reproduced -- mechanically, electronically, or by any other means, including photocopying - without written permission of Lion Brand Yarn Company.