



***Free Crochet Pattern***  
**Lion Brand® Scarfie®**  
**1 Ball Scarf**

**Pattern Number: L60090**  
***Designed by Ubaldo Feliciano-Hernandez***



## **SKILL LEVEL – Easy**

### **SIZE**

About 7 x 54 in. (18 x 137 cm)

### **MATERIALS**

- Lion Brand® Scarfie® (Art. #826)
  - 206 Cream/Taupe 1 ball
- Lion Brand® crochet hook size J-10 (6 mm)
- Lion Brand® large-eyed blunt needle

### **GAUGE**

4 (sc, 2 dc) groups = about 4 in. (10 cm).  
BE SURE TO CHECK YOUR GAUGE.



### **NOTES**

1. Scarf is worked in one piece in rows of (sc, 2 dc) groups.
2. For those who find a visual helpful, we've included a stitch diagram.

### **SCARF**

Ch 24.

**Row 1 (right side):** Work 2 dc in 3rd ch from hook (2 skipped ch count as beg ch), \*sk next 2 ch, (sc, 2 dc) in next ch; rep from \* 5 more times, sk next 2 ch, sc in last ch – you will have 21 sts in this row, consisting of 6 (sc, 2 dc) groups, 2 dc at beg of row and 1 sc at end of row. **Note:** 2 dc at beg and 1 sc at end count as 1 more (sc, 2 dc) group.

**Row 2:** Ch 2 (counts as beg ch), turn, 2 dc in first sc, \*sk next 2 dc, (sc, 2 dc) in next sc; rep from \* 5 more times, sk last 2 dc, sc in top of beg ch.

Rep Row 2 until piece measures about 54 in. (137 cm) from beginning.  
Fasten off.

### **FINISHING**

Weave in ends.

### **ABBREVIATIONS**

beg = begin(ning)

ch = chain

dc = double crochet

rep = repeat

sc = single crochet

sk = skip

st(s) = stitch(es)

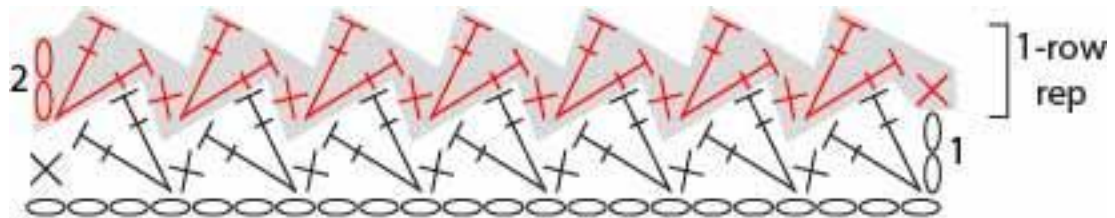
*Every effort has been made to produce accurate and complete instructions. We cannot be responsible for variance of individual crafters, human error, or typographical mistakes.*

For thousands of free patterns, visit our website [www.LionBrand.com](http://www.LionBrand.com)

To order visit our website [www.lionbrand.com](http://www.lionbrand.com) or call: (800) 258-YARN (9276) any time!

Copyright ©1998-2018 Lion Brand Yarn Company, all rights reserved.

No pattern or other material may be reproduced -- mechanically, electronically, or by any other means, including photocopying - without written permission of Lion Brand Yarn Company.



KEY	
○	= chain (ch)
×	= single crochet (sc)
┆	= double crochet (dc)