



***Free Crochet Pattern***  
**Lion Brand® Mandala® Baby**  
**Starburst Blankie**  
Pattern Number: L70339  
*Designed by Teresa Chorzepa*



## **SKILL LEVEL – Easy**

### **SIZE**

About 43 in. (109 cm) across, at widest

### **MATERIALS**

- Lion Brand® Mandala® Baby (Art. #526)
  - 207 Honey Dukes 2 balls
- Lion Brand® crochet hook size H-8 (5 mm)
- Lion Brand® stitch markers
- Lion Brand® large-eyed blunt needle



### **GAUGE**

Rnds 1-4 = about 4 in. (10 cm) diameter.  
BE SURE TO CHECK YOUR GAUGE.

### **STITCH EXPLANATIONS**

**beg-Shell** Ch 3 (counts as dc), (dc, ch 2, 2 dc) in indicated sp.

**Shell Work** (2 dc, ch 2, 2 dc) in indicated sp.

### **NOTES**

1. Blankie is worked in joined rnds in a ripple pattern with RS always facing.
2. The ripple pattern is easy to do, but it's important to remember that you may need to work several rnds before the ripple pattern becomes clear.
3. The ripple pattern consists of alternating peaks and valleys. Peaks are formed by working a Shell in the ch-2 sp of the Shells in the previous rnd. Valleys are formed by skipping sts centered between two peaks.
4. Beg in Rnd 6, stitch markers are used to mark valleys. If you are comfortable "reading" your stitches, you may choose not to use the markers.
5. For those who find visuals helpful, we have included stitch diagrams.

### **BLANKIE**

Ch 5; join with sl st in first ch to make a ring.

**Rnd 1 (RS):** Ch 3 (counts as dc), work 11 more dc in ring; join with sl st in top of beg ch-3 – you will have 12 dc in this rnd.

**Rnd 2:** Ch 4 (counts as dc, ch 1), dc in next st, \*ch 1, dc in next st; rep from \* around, ch 1; join with sl st in 3rd ch of beg ch-4 – 12 dc and 12 ch-1 sps.

**Rnd 3:** Sl st in first ch-1 sp, ch 5 (counts as dc, ch 2), dc in same ch-1 sp, (dc, ch 2, dc) in each rem ch-1 sp around; join with sl st in 3rd ch of beg ch-5 – 24 dc and 12 ch-2 sps.

**Rnd 4:** Sl st in first ch-2 sp, beg-Shell in same ch-2 sp, Shell in each rem ch-2 sp around; join with sl st in top of beg ch-3 – 12 Shells (counting dc sts in Shells – for a total of 48 dc and 12 ch-2 sps).

**Rnd 5:** Sl st in next dc, ch 3 (counts as dc), Shell in ch-2 sp of first Shell, dc in next st, \*sk next 2 sts, dc in next st, Shell in ch-2 sp of next Shell, dc in next st;

For thousands of free patterns, visit our website [www.LionBrand.com](http://www.LionBrand.com)

To order visit our website [www.lionbrand.com](http://www.lionbrand.com) or call: (800) 258-YARN (9276) any time!

Copyright ©1998-2018 Lion Brand Yarn Company, all rights reserved.

No pattern or other material may be reproduced -- mechanically, electronically, or by any other means, including photocopying - without written permission of Lion Brand Yarn Company.

rep from \* around; join with sl st in top of beg ch-3 – 12 Shells and 24 dc (for a total 72 dc and 12 ch-2 sps).

**Rnd 6:** Sl st in next dc, ch 3 (counts as dc), dc in next st, Shell in ch-2 sp of first Shell, dc in next 2 sts, place a marker in last dc made, \*sk next 2 sts, dc in next 2 sts, Shell in ch-2 sp of next Shell, dc in next 2 sts, place a marker in last dc made; rep from \* around; join with sl st in top of beg ch-3 – 12 Shells and 48 dc (for a total of 96 dc and 12 ch-2 sps).

**Rnd 7:** Sl st in next 2 dc, ch 3 (counts as dc), dc in each st to ch-2 sp of first Shell, Shell in ch-2 sp, dc in each st to 1 st before first marked dc, \*sk next 4 sts, move marker to last dc made, dc in each st to ch-2 sp of next Shell, Shell in ch-2 sp, dc in each st to 1 st before next marked dc; rep from \* around, move marker to last dc made; join with sl st in top of beg ch-3.

**Rnds 8 and 9:** Sl st in next dc, ch 3 (counts as dc), dc in each st to ch-2 sp of first Shell, Shell in ch-2 sp, dc in each st to first marked dc, \*sk marked dc and next dc, move marker to last dc made, dc in each st to ch-2 sp of next Shell, Shell in ch-2 sp, dc in each st to next marked dc; rep from \* around, move marker to last dc made; join with sl st in top of beg ch-3 – 12 Shells and 96 dc (for a total of 144 dc and 12 ch-2 sps; 6 dc along each of 24 edges, between ch-2 sp peaks and skipped st valleys) in Rnd 9.

**Rnds 10-33:** Rep Rnds 7-9 for 8 more times – 12 Shells and 528 dc (22 dc along each of 24 edges) in Rnd 33.

**Rnd 34:** (Sl st, ch 1, sc) in next dc, sc in each st to ch-2 sp of first Shell, 3 sc in ch-2 sp, sc in each st to marked dc, \*sk marked dc and next dc, remove marker, sc in each st to ch-2 sp of next Shell, 3 sc in ch-2 sp, sc in each st to next marked dc; rep from \* around, remove marker; join with sl st in first sc – 540 sc (22 sc along each of 24 edges between peaks (center sc of 3-sc groups) and skipped st valleys).

Fasten off.

## **FINISHING**

Weave in ends.

## **ABBREVIATIONS**

beg = begin(ning)(s)  
ch = chain  
ch-sp(s) = chain space(s) previously made  
dc = double crochet  
rem = remain  
rep = repeat  
rnd(s) = round(s)  
RS = right side  
sc in single crochet  
sk = skip  
sl st = slip stitch  
st(s) = stitch(es)

*Every effort has been made to produce accurate and complete instructions. We cannot be responsible for variance of individual crafters, human error, or typographical mistakes.*

## KEY

● = slip stitch (sl st)

○ = chain (ch)

× = single crochet (sc)

⋮ = double crochet (dc)

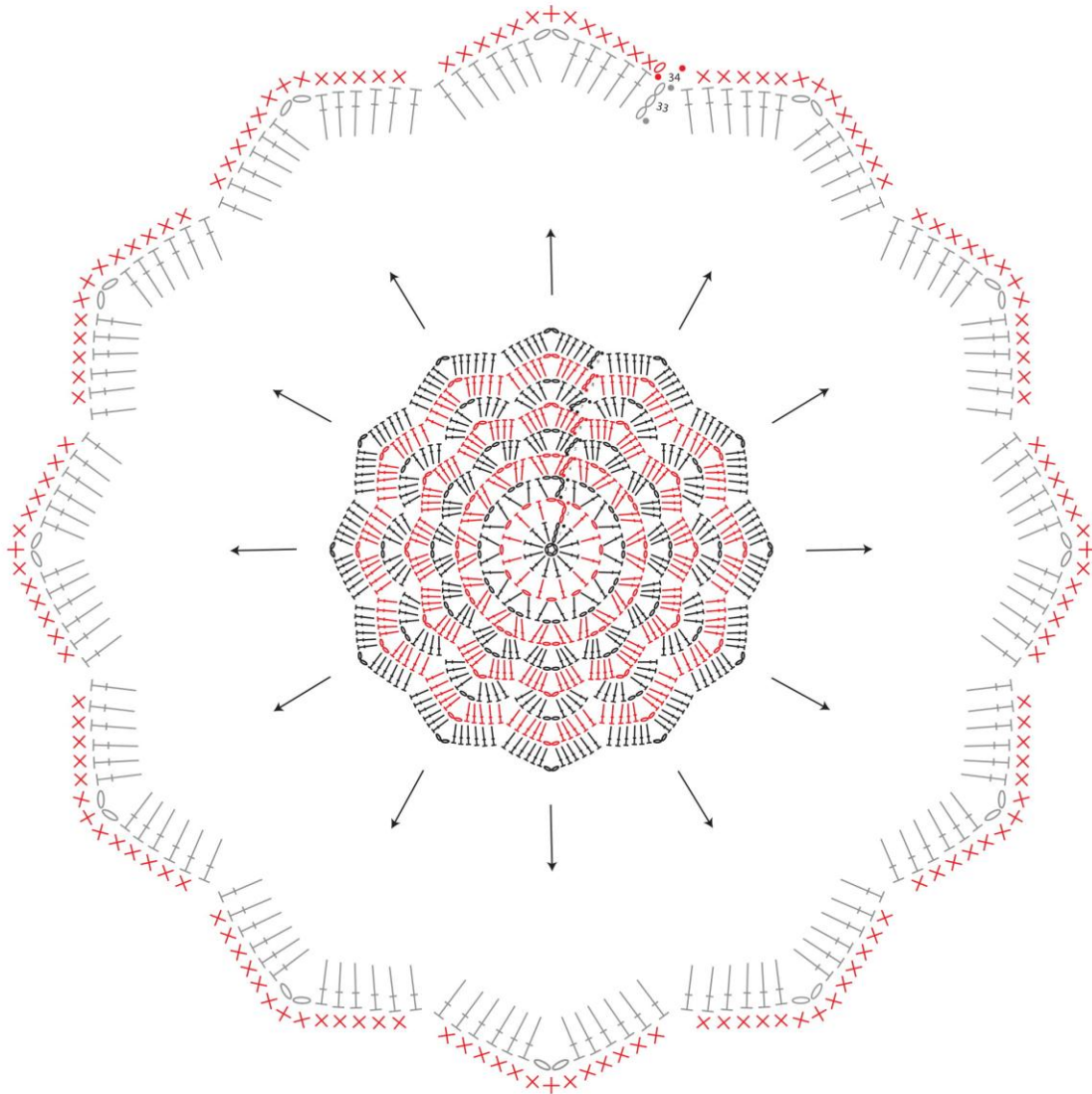
For thousands of free patterns, visit our website [www.LionBrand.com](http://www.LionBrand.com)

To order visit our website [www.lionbrand.com](http://www.lionbrand.com) or call: (800) 258-YARN (9276) any time!

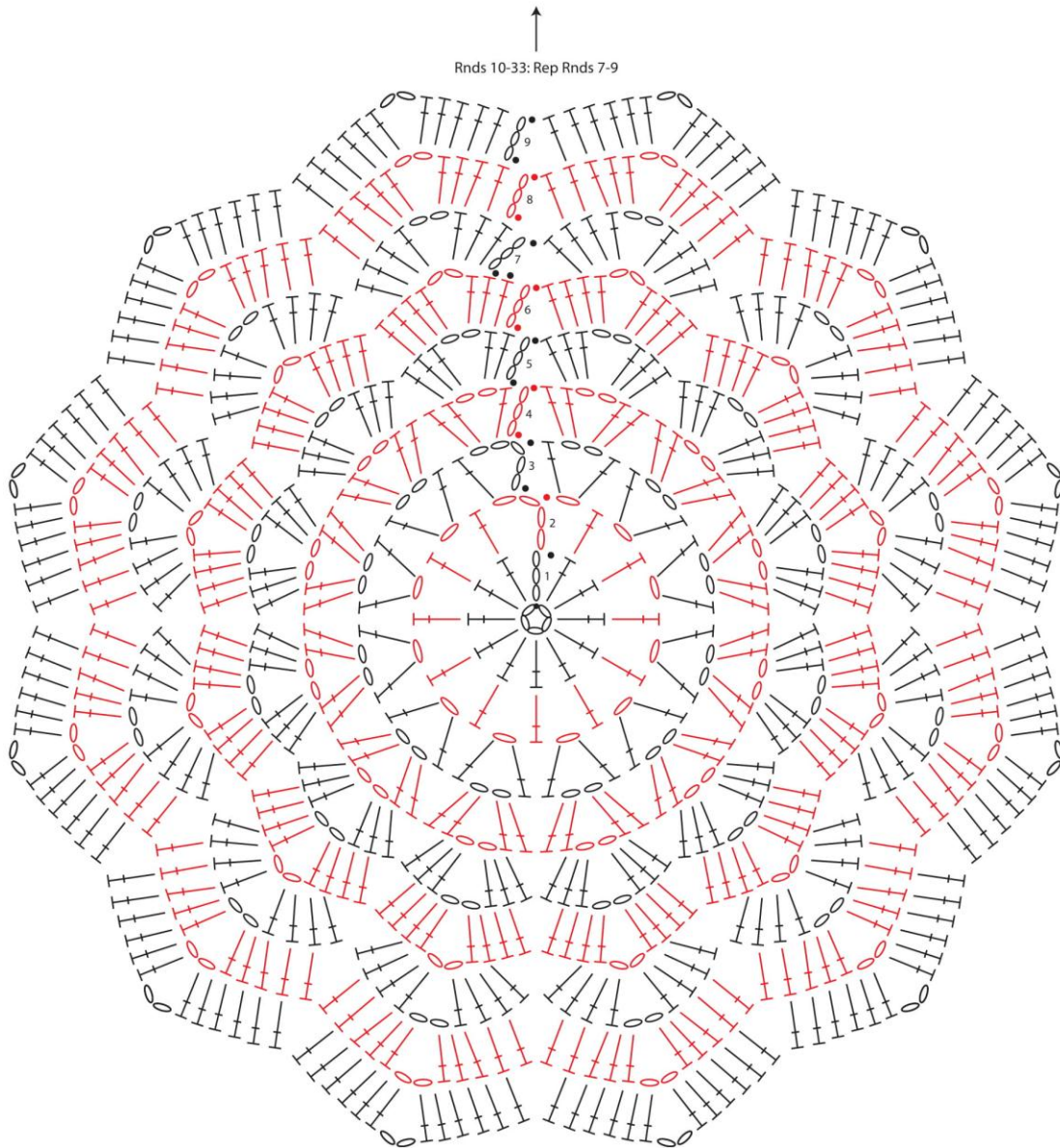
Copyright ©1998-2018 Lion Brand Yarn Company, all rights reserved.

No pattern or other material may be reproduced -- mechanically, electronically, or by any other means, including photocopying - without written permission of Lion Brand Yarn Company.

Reduced sample of Rnd 34.  
Complete Rnd 34 has 22 sc along each of 24 edges  
between sc peaks and skipped st valleys







For thousands of free patterns, visit our website [www.LionBrand.com](http://www.LionBrand.com)  
To order visit our website [www.lionbrand.com](http://www.lionbrand.com) or call: (800) 258-YARN (9276) any time!  
Copyright ©1998-2018 Lion Brand Yarn Company, all rights reserved.  
No pattern or other material may be reproduced -- mechanically, electronically, or by any other means, including photocopying - without written permission of Lion Brand Yarn Company.