



***Free Crochet Pattern***  
**Lion Brand® Rewind®**  
**Openwork Cover-Up**  
Pattern Number: L80018  
*Designed by Teresa Chorzepa*



## **SKILL LEVEL – Easy**

### **SIZE**

**Finished Width** About 32 in. (81.5 cm)

**Finished Length** About 23 in. (58.5 cm)

### **MATERIALS**

- Lion Brand® Rewind® (Art. #523)
  - 148 Fish Bowl 3 balls
- Lion Brand® crochet hook size K-10.5 (6.5 mm)
- Lion Brand® stitch markers
- Lion Brand® large-eyed blunt needle



### **GAUGE**

4 (dc, ch 2) pattern reps + 5 1/2 rows = about 4 in. (10 cm) over Row 2.

**BE SURE TO CHECK YOUR GAUGE.**

### **STITCH EXPLANATION**

**shell** Work (2 dc, ch 1, 2 dc) in indicated st or space.

### **NOTES**

1. Cover-Up is made from 2 rectangles.
2. Each rectangle is worked, back and forth in rows, from side to side.
3. Rectangles are sewn together following a diagram to form Cover-Up.
4. For those who find a visual helpful, we've included a stitch diagram.

### **RECTANGLE (make 2)**

Ch 71.

**Row 1:** Dc in 4th ch from hook (3 skipped ch count as dc), \*ch 1, sk next 2 ch, shell in next ch, ch 1, sk next 2 ch, dc in next 2 ch, (ch 2, sk next 2 ch, dc in next ch) 3 times, ch 2, sk next 2 ch, dc in next 2 ch; rep from \* 2 more times, ch 1, sk next 2 ch, shell in next ch, ch 1, sk next 2 ch, dc in last 2 ch – you will have 4 shells, 21 dc, 12 ch-1 sps, 12 ch-2 sps, and a 2-dc group at the beg and end of this row.

**Rows 2-43:** Ch 3 (counts as dc), turn, sk first dc, dc in next dc, \*ch 1, sk next ch-1 sp, shell in ch-1 sp of next shell, ch 1, sk next ch-1 sp, dc in next 2 dc, (ch 2, sk next ch-2 sp, dc in next dc) 3 times, ch 2, sk next ch-2 sp, dc in next 2 dc; rep from \* 2 more times, ch 1, sk next ch-1 sp, shell in ch-1 sp of next shell, ch 1, sk last ch-1 sp, dc in next dc, dc in top of beg ch-3.

**Row 44:** Ch 1, turn, sc in first 2 dc, \*ch 2, sk next ch-1 sp, sc in ch-1 sp of next shell, ch 2, sk next ch-1 sp, sc in next 2 dc, (ch 2, sk next ch-2 sp, sc in next dc) 3 times, ch 2, sk next ch-2 sp, sc in next 2 dc; rep from \* 2 more times, ch 2, sk next ch-1 sp, sc in ch-1 sp of next shell, ch 2, sk next ch-1 sp, sc in next dc, sc in top of beg ch-3 – 29 sc and 20 ch-2 sps.

Fasten off.

For thousands of free patterns, visit our website [www.LionBrand.com](http://www.LionBrand.com)

To order visit our website [www.lionbrand.com](http://www.lionbrand.com) or call: (800) 258-YARN (9276) any time!

Copyright ©1998-2018 Lion Brand Yarn Company, all rights reserved.

No pattern or other material may be reproduced -- mechanically, electronically, or by any other means, including photocopying - without written permission of Lion Brand Yarn Company.

## **FINISHING**

Lay Rectangles onto a flat surface, one on top of the other, matching sts and rows.

Sew top edges together on each side for shoulders, leaving center 12 in. (30.5 cm) unsewn for neck.

Place markers on side edges about 9 1/2 in. (24 cm) below shoulder seams and 2 more markers on side edges about 9 1/2 in. (24 cm) below the first markers. Sew sides between markers, thus leaving lower edge unsewn for side slits and edge above markers unsewn for armholes.

Weave in ends.

## **ABBREVIATIONS**

beg = begin(ning)

ch = chain

ch-sp(s) = chain space(s) previously made

dc = double crochet

rep(s) = repeat(s)

sc = single crochet

sk = skip

st(s) = stitch(es)

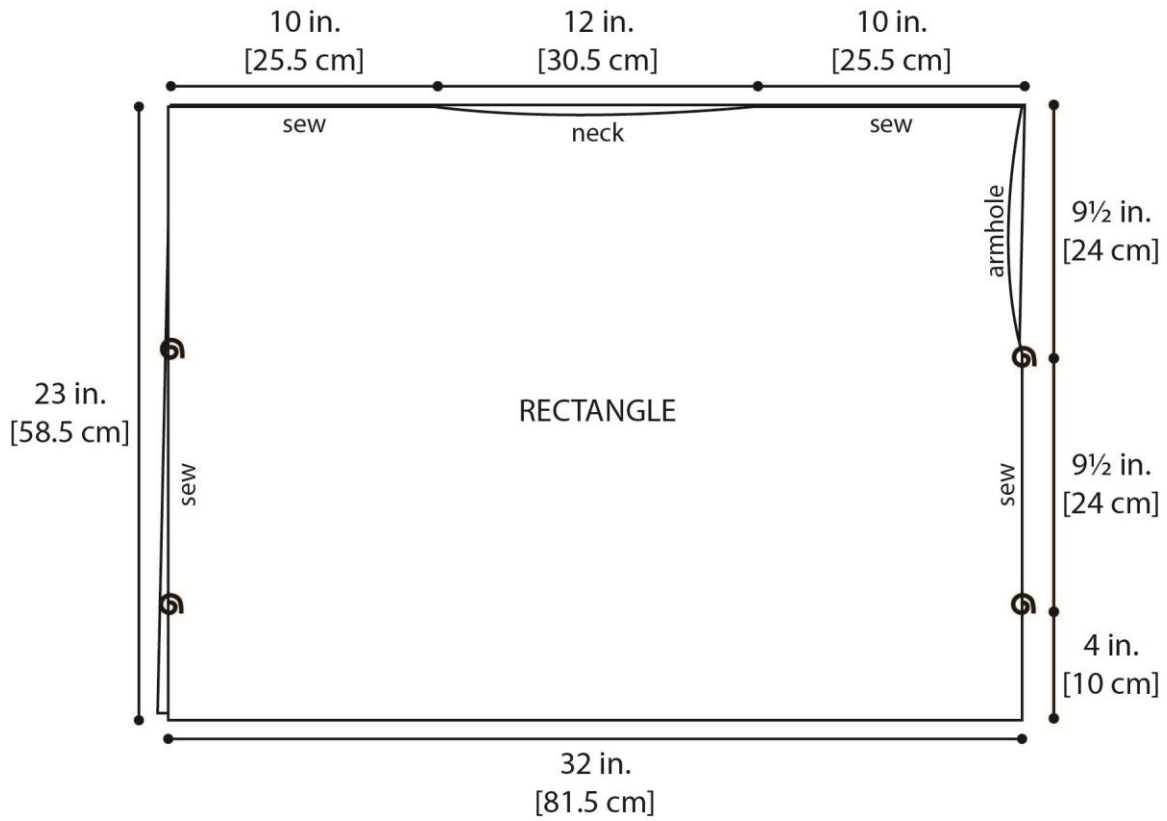
*Every effort has been made to produce accurate and complete instructions. We cannot be responsible for variance of individual crafters, human error, or typographical mistakes.*

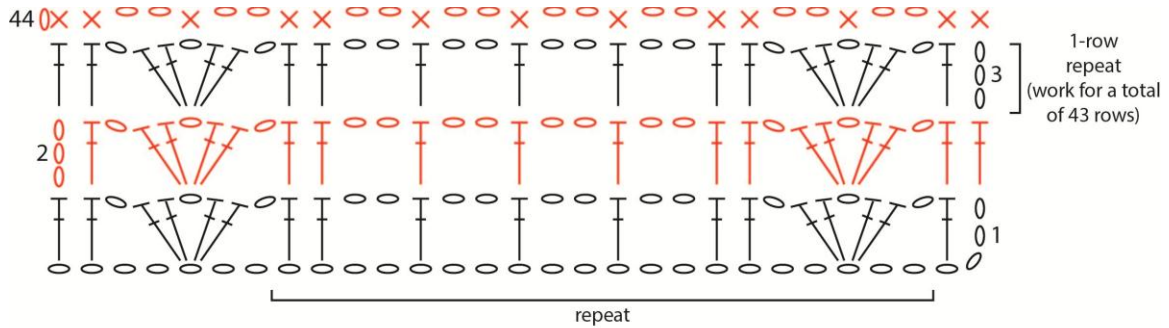
For thousands of free patterns, visit our website [www.LionBrand.com](http://www.LionBrand.com)

To order visit our website [www.lionbrand.com](http://www.lionbrand.com) or call: (800) 258-YARN (9276) any time!


Copyright ©1998-2018 Lion Brand Yarn Company, all rights reserved.

No pattern or other material may be reproduced -- mechanically, electronically, or by any other means, including photocopying - without written permission of Lion Brand Yarn Company.





**KEY**

- = chain (ch)
- X = single crochet (sc)
- T = double crochet (dc)
-  = shell (2 dc, ch 1, 2 dc)