



Free Crochet Pattern
Lion Brand® Flikka
Popham Beach Cardigan
Pattern Number: L80021



SKILL LEVEL – Easy+

SIZE

ONE SIZE

Finished Bust About 50 in. (127 cm)

Finished Length About 25 in. (63.5 cm)

MATERIALS

- Lion Brand® Flikka® (Art. #431)
 - 702 Confetti 6 balls (A)
 - 711 Jump Rope 3 balls (B)
- Lion Brand® crochet hook size I-9 (5.5 mm)
- Lion Brand® large-eyed blunt needle



GAUGE

1 Square = about 6 1/2 in. (16.5 cm), before seaming. After seaming, Squares will measure about 6 1/4 in. (16 cm).

BE SURE TO CHECK YOUR GAUGE.

NOTES

1. Cardigan is made from 32 Squares and 8 Rectangles.
2. Squares and Rectangles are worked back and forth in rows with increases worked at center of each row.
3. Pieces are sewn together following a diagram to make the Cardigan.
4. To change yarn color, work last st of old color to last yarn over. Yarn over with new color and draw through all loops on hook to complete st. Fasten off old color. Proceed with new color.
5. For those who find visuals helpful, we've included stitch diagrams.

SQUARES (make 32)

With A, ch 4; join with a sl st in first ch to make a ring.

Row 1 (RS): Ch 3 (counts as dc), (dc, ch 2, 2 dc) in ring – you will have 4 dc and 1 ch-2 sp in this row (2 dc on each side of center ch-2 sp).

Row 2: Ch 3 (counts as dc), turn, sk first dc, dc in next dc, (2 dc, ch 2, 2 dc) in ch-2 sp, dc in next dc, dc in top of beg ch-3 – 8 dc and 1 ch-2 sp (4 dc on each side of center ch-2 sp).

Rows 3 and 4: Ch 3 (counts as dc), turn, sk first dc, dc in each dc to center ch-2 sp, (2 dc, ch 2, 2 dc) in ch-2 sp, dc in each dc across working last dc in top of beg ch-3 and change to B at end of Row 4 – 16 dc and 1 ch-2 sp (8 dc on each side of center ch-2 sp) in Row 4.

Rows 5-8: With B, rep Row 3 – 32 dc and 1 ch-2 sp (16 dc on each side of center ch-2 sp) in Row 8.

Fasten off.

For thousands of free patterns, visit our website www.LionBrand.com

To order visit our website www.lionbrand.com or call: (800) 258-YARN (9276) any time!

Copyright ©1998-2018 Lion Brand Yarn Company, all rights reserved.

No pattern or other material may be reproduced -- mechanically, electronically, or by any other means, including photocopying - without written permission of Lion Brand Yarn Company.

Row 9 (RS): From RS, join A with a sl st in corner of Square so that you are ready to work across row ends towards beg ring. Ch 3 (counts as dc), dc in end of Row 8, then work 2 dc in end of each row across to beg ring; (2 dc, ch 2, 2 dc) in ring,; work 2 dc in end of each row across to next corner – 36 dc and 1 ch-2 sp (18 dc on each side of center ch-2 sp).

Rows 10-12: Rep Row 3 – 48 dc and 1 ch-2 sp (24 dc on each side of center ch-2 sp).

Fasten off.

RECTANGLE I (make 4)

With A, ch 4; join with a sl st in first ch to make a ring.

Rows 1-8: Work same as Rows 1-8 of Square.

Fasten off.

Row 9 (RS): From RS, join A with a sl st in corner of Square so that you are ready to work across row ends towards beg ring. Ch 3 (counts as dc), dc in end of Row 8, then work 2 dc in end of each row across to beg ring, 2 dc in ring – 18 dc.

Rows 10-12: Ch 3 (counts as dc), turn, sk first dc, dc in each dc across working last dc in top of beg ch-3.

Fasten off.

RECTANGLE II (make 4)

With A, ch 4; join with a sl st in first ch to make a ring.

Rows 1-8: Work same as Rows 1-8 of Square.

Fasten off.

Row 9 (RS): From RS, join A with a sl st in beg ring. Ch 3 (counts as dc), dc in ring, 2 dc in end of each row across to next corner – 18 dc.

Rows 10-12: Work same as Rows 10-12 of Rectangle I.

Fasten off.

SLEEVES (make 2)

Following diagram, sew 4 Squares together to make one Sleeve.

First Side Edging

From RS, join A with a sl st in corner ch-2 sp at wrist end of Sleeve so that you are ready to work towards the top of Sleeve.

Row 1 (RS): Ch 1, work 52 sc evenly spaced along side edge.

Row 2: Ch 3 (counts as dc), turn, sk first dc, dc in next 29 sts, hdc in next 6 sts, sc in next 6 sts; leave last 10 sts unworked – 42 sts.

Row 3: Turn, sl st in first 6 sts, sc in next 6 sts, hdc in next 6 sts, dc in each rem st to end of row – 36 sts (not including sl sts).

Row 4: Ch 3 (counts as dc), turn, sk first dc, dc in next 17 sts, hdc in next 6 sts, sc in next 6 sts; leave rem sts unworked – 30 sts.

Row 5: Rep Row 3 – 24 sts (not including sl sts).

For thousands of free patterns, visit our website www.LionBrand.com

To order visit our website www.lionbrand.com or call: (800) 258-YARN (9276) any time!

Copyright ©1998-2018 Lion Brand Yarn Company, all rights reserved.

No pattern or other material may be reproduced -- mechanically, electronically, or by any other means, including photocopying - without written permission of Lion Brand Yarn Company.

Row 6: Ch 3 (counts as dc), turn, sk first dc, dc in next 5 sts, hdc in next 6 sts, sc in next 6 sts; leave rem sts unworked – 18 sts.

Row 7: Turn, sl st in first 4 sts, sc in next 4 sts, hdc in next 4 sts, dc in next 6 sts – 14 sts (not including sl sts).

Fasten off.

Second Side Edging

From RS, join A with a sl st in corner at top of Sleeve so that you are ready to work along side edge towards wrist end of Sleeve

Row 1 (RS): Ch 1, work 52 sc evenly spaced along side edge.

Row 2: Turn, sl st in first 10 sts, sc in next 6 sts, hdc in next 6 sts, dc in each rem st to end of row – 42 sts (not including sl sts).

Row 3: Ch 3 (counts as dc), turn, sk first dc, dc in next 23 sts, hdc in next 6 sts, sc in next 6 sts; leave rem 6 sts unworked – 36 sts.

Row 4: Turn, sl st in first 6 sts, sc in next 6 sts, hdc in next 6 sts, dc in each rem st to end of row – 30 sts (not including sl sts).

Row 5: Ch 3 (counts as dc), turn, sk first dc, dc in next 11 sts, hdc in next 6 sts, sc in next 6 sts; leave rem sts unworked – 24 sts.

Row 6: Rep Row 4 – 18 sts.

Row 7: Ch 3 (counts as dc), turn, sk first dc, dc in next 5 sts, hdc in next 4 sts, sc in next 4 sts; leave rem sts unworked – 14 sts.

Fasten off.

FINISHING

Following diagram, sew Squares and Rectangles together to make the Cardigan body.

Following diagram, sew Sleeves to body.

Sew side and Sleeve seams.

Front Edging

From RS, join A with a sl st in lower right front corner of body.

Row 1 (RS): Ch 1, work sc evenly spaced up right front edge, across back neck, and down left front edge.

Rows 2-4: Ch 3 (counts as dc), turn, dc in each st across.

Outer Edging

Ch 1, turn, sc in each dc of Row 4; work 3 sc at lower corner of left front, then sc evenly spaced along lower edge of body to right front lower corner, work 2 sc in corner, join with sl st in beg sc.

Fasten off.

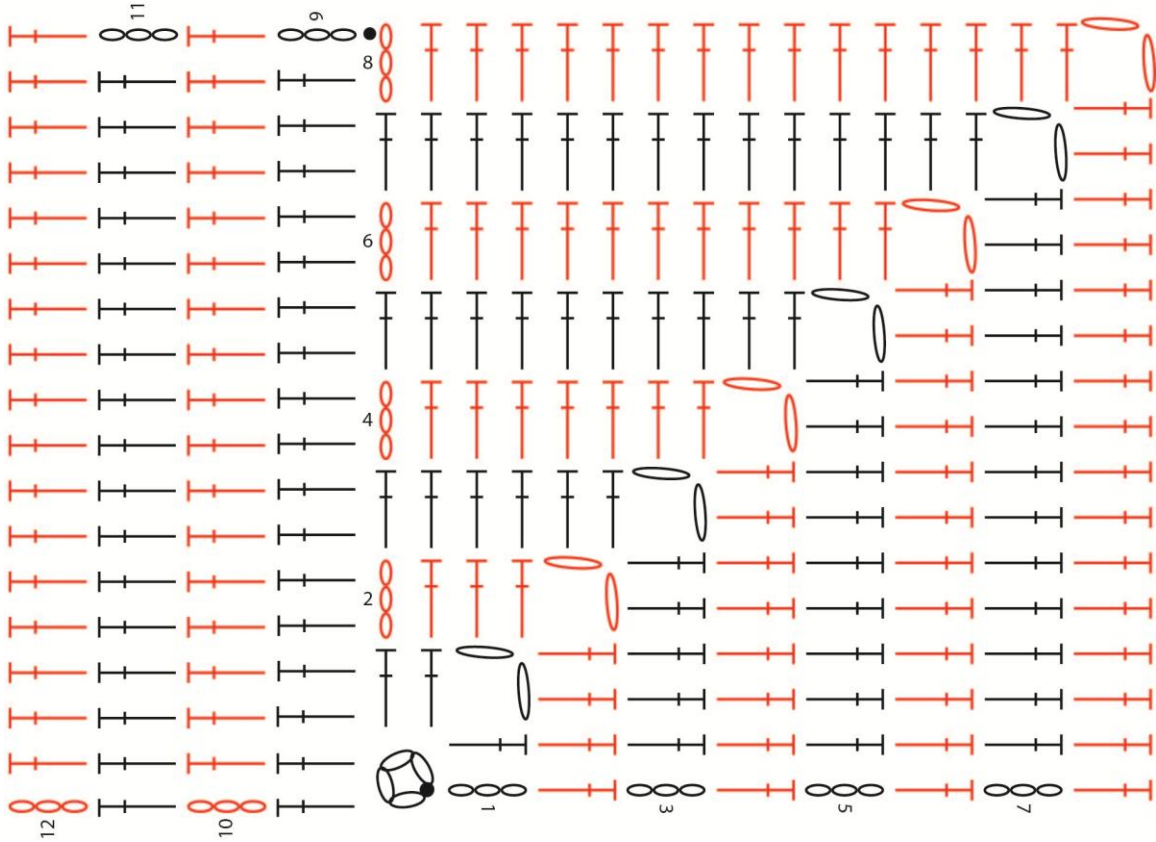
Weave in ends.

ABBREVIATIONS

beg = begin(ning)
ch = chain
ch-sp(s) = chain space(s) previously made
dc = double crochet
rem = remain(ing)
rep = repeat
RS = right side
sc = single crochet
sk = skip
sl st = slip stitch
st(s) = stitch(es)
tog = together

Every effort has been made to produce accurate and complete instructions. We cannot be responsible for variance of individual crafters, human error, or typographical mistakes.

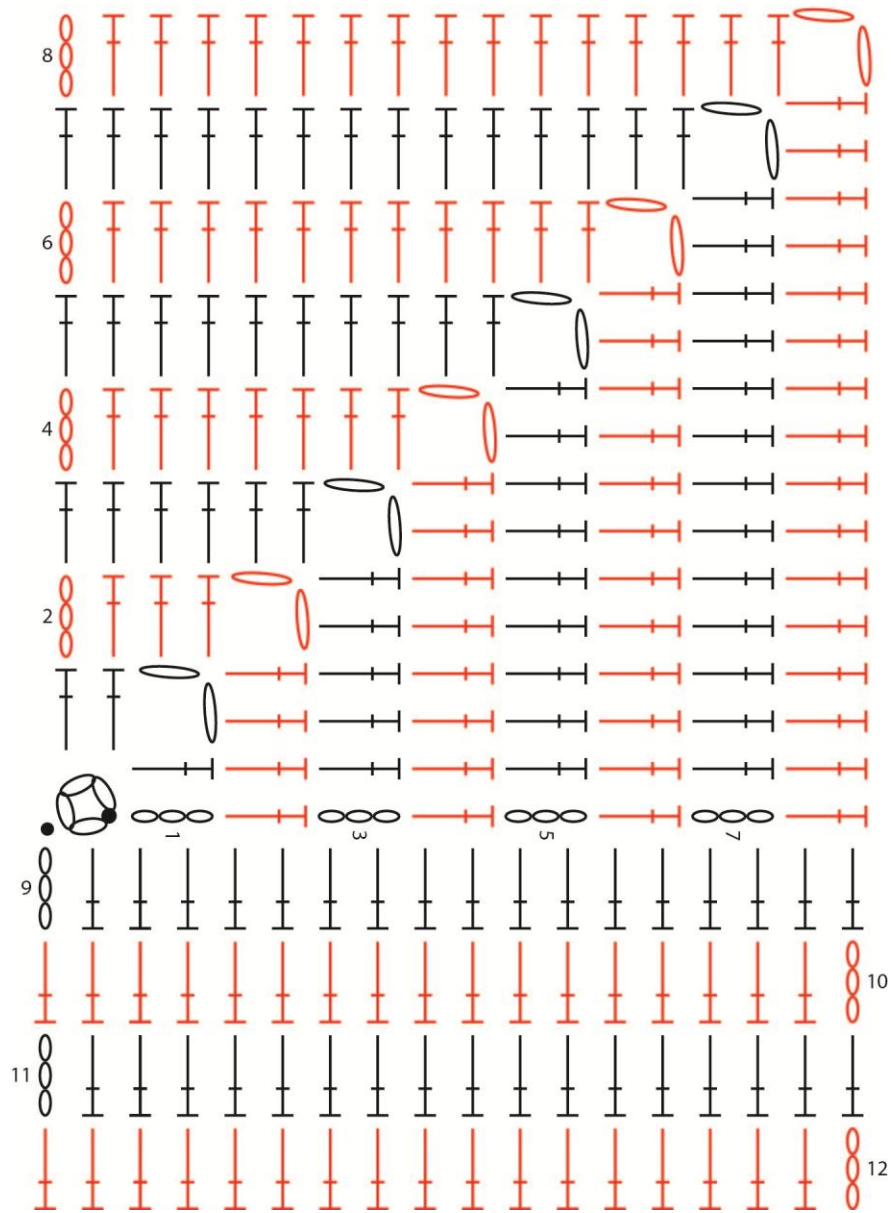
RECTANGLE I



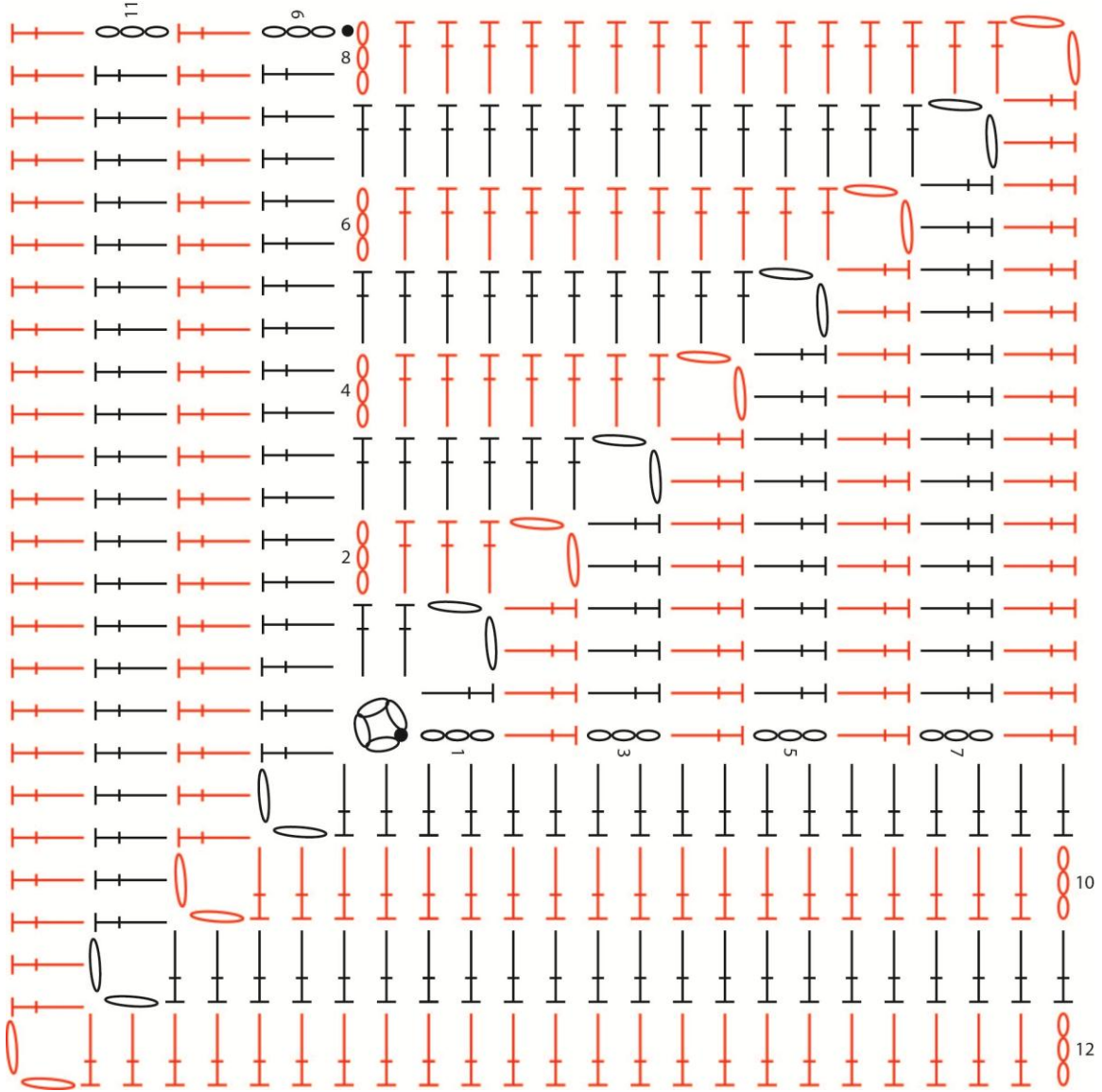
For thousands of free patterns, visit our website www.LionBrand.com
To order visit our website www.lionbrand.com or call: (800) 258-YARN (9276) any time!
Copyright ©1998-2018 Lion Brand Yarn Company, all rights reserved.

No pattern or other material may be reproduced -- mechanically, electronically, or by any other means, including photocopying - without written permission of Lion Brand Yarn Company.

RECTANGLE II



SQUARE



For thousands of free patterns, visit our website www.LionBrand.com
To order visit our website www.lionbrand.com or call: (800) 258-YARN (9276) any time!
Copyright ©1998-2018 Lion Brand Yarn Company, all rights reserved.

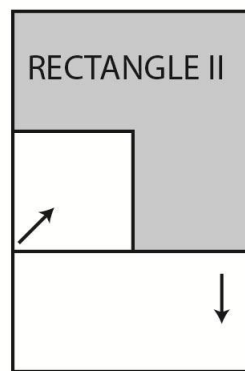
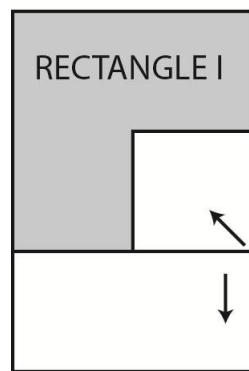
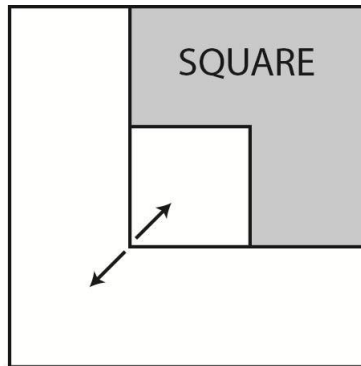
No pattern or other material may be reproduced -- mechanically, electronically, or by any other means, including photocopying - without written permission of Lion Brand Yarn Company.

KEY

● = slip stitch (sl st)

○ = chain (ch)

⋈ = double crochet (dc)



↓ indicates direction
of work

