



Free Knitting Pattern
Lion Brand® Touch of Alpaca®
Casey Sweater
Pattern Number: L80111
Designed by Bobbie Fitzgerald



SKILL LEVEL – Intermediate+

SIZES

S (M, L, 1X, 2X)

Finished Chest About 44 (48, 53, 57, 60) in. (112 (122, 134.5, 145, 152.5) cm)

Finished Back Length About 27 (27 1/2, 28, 28 1/2, 29) in. (68.5 (70, 71, 72.5, 73.5) cm)

Finished Front Length About 24 (24 1/2, 25, 25 1/2, 26) in. (61 (62, 63.5, 65, 66) cm)

Note: Pattern is written for smallest size with changes for larger sizes in parentheses. When only one number is given, it applies to all sizes. To follow pattern more easily, circle all numbers pertaining to your size before beginning.

MATERIALS

- Lion Brand® Touch of Alpaca® (Art. #674)
 - 123 Taupe 7 (8, 9, 10, 10) balls
- Lion Brand® cable needle
- Lion Brand® stitch markers
- Lion Brand® stitch holders
- Lion Brand® large-eyed blunt needle



ADDITIONAL MATERIALS

Circular knitting needle size 7 (4.5 mm), 29 in. (73.5 cm) long or longer

Circular knitting needle size 7 (4.5 mm), 16 in. (40.5 cm) long

Circular knitting needle size 8 (5 mm), 29 in. (73.5 cm) long or longer

GAUGE

18 sts + 24 rows = about 4 in. (10 cm) with larger needle over Double Seed St.

28 sts = about 4 1/4 in. (11 cm) with larger needle over Cable Panels A, B, and C.

24 1/2 sts = about 4 in. (10 cm) with smaller needle over K2, p2 Rib.

BE SURE TO CHECK YOUR GAUGE.

STITCH EXPLANATIONS

M1 (make 1) An increase worked by lifting horizontal thread lying between needles and placing it onto left needle. Knit this new stitch through the back loop.

ssk (slip, slip, knit) Slip next 2 sts as if to knit, one at a time, to right needle; insert left needle into fronts of these 2 sts and knit them tog – 1 st decreased.

CABLE STITCH EXPLANATIONS

1/1 LC (1 over 1 left cross) Slip 1 st to cable needle and hold in front, k1, then k1 from cable needle.

1/1 RC (1 over 1 right cross) Slip 1 st to cable needle and hold in back, k1, then k1 from cable needle.

2/1 RPC (2 over 1 right purl cross): Slip 1 st to cable needle and hold in back, k2, then p1 from cable needle.

For thousands of free patterns, visit our website www.LionBrand.com

To order visit our website www.lionbrand.com or call: (800) 258-YARN (9276) any time!

Copyright ©1998-2018 Lion Brand Yarn Company, all rights reserved.

No pattern or other material may be reproduced -- mechanically, electronically, or by any other means, including photocopying - without written permission of Lion Brand Yarn Company.

2/1 LPC (2 over 1 left purl cross): Slip 2 sts to cable needle and hold in front, p1, then k2 from cable needle.

2/2 LC (2 over 2 left cross) Slip 2 sts to cable needle and hold in front, k2, then k2 from cable needle.

2/2 RC (2 over 2 right cross) Slip 2 sts to cable needle and hold in back, k2, then k2 from cable needle.

2/2 LPC (2 over 2 left purl cross) Slip 2 sts to cable needle and hold in front, p2, then k2 from cable needle.

2/2 RPC (2 over 2 right purl cross) Slip 2 sts to cable needle and hold in back, k2, then p2 from cable needle.

PATTERN STITCHES

K2, p2 Rib (worked over a multiple of 4 sts + 2 additional sts)

Row 1: K2, *p2, k2; rep from * to end of row.

Row 2: K the knit sts and p the purl sts.

Rep Row 2 for K2, p2 Rib.

K2, p2 Rib worked in rnds (worked over a multiple of 4 sts)

Rnd 1: *K2, p2; rep from * to end of rnd.

Rnd 2: K the knit sts and p the purl sts.

Rep Rnd 2 for K2, p2 Rib worked in rnds.

Double Seed Stitch (worked over an even number of sts)

Row 1 (RS): *K1, p1; rep from * to end.

Row 2: Rep Row 1.

Rows 3 and 4: *P1, k1; rep from * to end.

Rep Rows 1-4 for Double Seed St.

Double Seed Stitch (worked over an odd number of sts)

Row 1 (RS): K1, *p1, k1; rep from * to end.

Rows 2 and 3: P1, *k1, p1; rep from * to end.

Row 4: K1, *p1, k1; rep from * to end.

Rep Rows 1-4 for Double Seed St.

CABLE PANELS

Cable Panel A (worked over 28 sts)

Row 1 (RS): P2, 1/1 RC, (p2, 2/2 LC, k2, p2, 1/1 RC) twice.

Row 2: K the knit sts and p the purl sts.

Row 3: P2, 1/1 RC, (p2, k2, 2/2 RC, p2, 1/1 RC) twice.

Row 4: K the knit sts and p the purl sts.

Rep Rows 1-4 for Cable Panel A.

Cable Panel B (worked over 28 sts)

Row 1 (RS): P4, (2/2 RC, p4) 3 times.

Row 2 and all WS rows: K the knit sts and p the purl sts.

Row 3: P3, 2/1 RPC, (2/2 LPC, 2/2 RPC) twice, 2/1 LPC, p3.

For thousands of free patterns, visit our website www.LionBrand.com

To order visit our website www.lionbrand.com or call: (800) 258-YARN (9276) any time!

Copyright ©1998-2018 Lion Brand Yarn Company, all rights reserved.

No pattern or other material may be reproduced -- mechanically, electronically, or by any other means, including photocopying - without written permission of Lion Brand Yarn Company.

Row 5: P2, 2/1 RPC, p3, 2/2 LC, p4, 2/2 LC, p3, 2/1 LPC, p2.

Row 7: P2, k2, p2, (2/2 RPC, 2/2 LPC) twice, p2, k2, p2.

Row 9: (P2, k2) twice, p4, 2/2 RC, p4, (k2, p2) twice.

Row 11: P2, k2, p2, (2/2 LPC, 2/2 RPC) twice, p2, k2, p2.

Row 13: P2, 2/1 LPC, p3, 2/2 LC, p4, 2/2 LC, p3, 2/1 RPC, p2.

Row 15: P3, 2/1 LPC, (2/2 RPC, 2/2 LPC) twice, 2/1 RPC, p3.

Row 16: K the knit sts and p the purl sts.

Rep Rows 1–16 for Cable Panel B.

Cable Panel C (worked over 28 sts)

Row 1 (RS): 1/1 LC, p2, (2/2 LC, k2, p2, 1/1 LC, p2) twice.

Row 2: K the knit sts and p the purl sts.

Row 3: 1/1 LC, p2, (k2, 2/2 RC, p2, 1/1 LC, p2) twice.

Row 4: K the knit sts and p the purl sts.

Rep Rows 1-4 for Cable Panel C.

NOTES

1. Sweater is made from 4 pieces: Back, Front, and 2 Sleeves.
2. Each piece is worked back and forth in rows, beginning at lower edge. Each row begins and ends with a St st (k on RS, p on WS) selvedge st. Selvedge sts are used in seaming.
3. The Back and Front are worked in K2, p2 Rib at lower edge and then in Cable Panels and Double Seed st. The Sleeves are worked in Double Seed st. The Back is about 3 in. (7.5 cm) longer than Front.
4. The neckband is worked from sts picked up around the neck edge.
5. The cable patterns can be worked by following the written instructions or the charts. Read RS rows of charts from right to left and wrong side rows from left to right.
6. Circular needles are used to accommodate the numbers of sts. Work back and forth in rows on the circular needle as if working on straight needles.
7. When you see 'work in pattern as established' in the instructions, this means to work the next row of the pattern sts, lining up sts as in previous rows. Whenever there are too few sts to complete a cross st, simply k the knit sts and p the purl sts.
8. When you see 'work even' in the instructions, this means to continue on in the pattern st you have established without changing the st count by increasing, decreasing, or binding off.

BACK

With smaller long circular needle, cast on 126 (134, 146, 154, 162) sts.

Work in K2, p2 Rib until piece measures about 1 1/2 in. (4 cm) from beg, end with a RS row as the last row you work.

Next Row (Increase Row – WS): P1, M1, p to last st, M1, p1 – 128 (136, 148, 156, 164) sts.

Beg Patterns

For thousands of free patterns, visit our website www.LionBrand.com

To order visit our website www.lionbrand.com or call: (800) 258-YARN (9276) any time!

Copyright ©1998-2018 Lion Brand Yarn Company, all rights reserved.

No pattern or other material may be reproduced -- mechanically, electronically, or by any other means, including photocopying - without written permission of Lion Brand Yarn Company.

Change to larger long circular needle.

Row 1 (RS): K1 (selvedge st), work Row 1 of Double Seed St over next 21 (25, 31, 35, 39) sts, place marker (pm), work Row 1 of Cable Panel A over next 28 sts, pm, work Row 1 of Cable Panel B over next 28 sts, pm, work Row 1 of Cable Panel C over next 28 sts, pm, work Row 1 of Double Seed St over next 21 (25, 31, 35, 39) sts, k1 (selvedge st).

Row 2: P1, work next row of Double Seed st to first marker, slip marker (sm), work next row of Cable Panel C to next marker, sm, work next row of Cable Panel B to next marker, sm, work next row of Cable Panel A to next marker, sm, work next row of Double Seed st to last st, p1.

Keeping first and last st in St st for selvedge sts, work in patterns as established until piece measures about 26 (26 1/2, 27, 27 1/2, 28) in. (66 (67.5, 68.5, 70, 71) cm) from beg, end with a WS row as the last row you work.

Shape Neck

NOTE

Continue to keep first and last st in St st for selvedge sts to end of piece. When working in patterns as established if there are too few sts near the edge of a piece to work a complete cable stitch, simply k the knit sts and p the purl sts.

Row 1 (RS): Work in patterns as established over first 41 (43, 47, 49, 53) sts for right side, place center 46 (50, 54, 58, 58) sts on holder for neck, join 2nd ball of yarn and work in patterns as established to end for left side – 41 (43, 47, 49, 53) sts on each side.

You will now work both sides AT THE SAME TIME with separate balls of yarn.

Row 2: Work in patterns as established across both sides using separate balls of yarn.

Row 3: On right side, work in pattern as established to last 3 sts, k2tog, k1; on left side, k1, ssk, work in patterns as established across – 40 (42, 46, 48, 52) sts on each side.

Rows 4-7: Rep Rows 2 and 3 twice – 38 (40, 44, 46, 50) sts on each side.

Bind off.

FRONT

Cast on and work same as for Back until piece measures about 21 (21 1/2, 22, 22 1/2, 23) in. (53.5 (54.5, 56, 57, 58.5) cm) from beg, end with a WS row as the last row you work.

Shape Neck

Row 1 (RS): Work in patterns as established over first 45 (47, 51, 53, 57) sts for left side, place center 38 (42, 46, 50, 50) sts on holder for neck, join 2nd ball of yarn and work in patterns as established to end for left side – 45 (47, 51, 53, 57) sts on each side.

You will now work both sides AT THE SAME TIME with separate balls of yarn.

For thousands of free patterns, visit our website www.LionBrand.com

To order visit our website www.lionbrand.com or call: (800) 258-YARN (9276) any time!

Copyright ©1998-2018 Lion Brand Yarn Company, all rights reserved.

No pattern or other material may be reproduced -- mechanically, electronically, or by any other means, including photocopying - without written permission of Lion Brand Yarn Company.

Row 2: Work in patterns as established across both sides using separate balls of yarn.

Row 3: On right side, work in patterns as established to last 3 sts, k2tog, k1; on left side, k1, ssk, work in patterns as established across – 44 (46, 50, 52, 56) sts on each side.

Rows 4-15: Rep Rows 2 and 3 for 6 more times – 38 (40, 44, 46, 50) sts on each side.

Work even in patterns as established until piece measures about 24 (24 1/2, 25, 25 1/2, 26) in. (61 (62, 63.5, 65, 66) cm) from beg.

Bind off.

SLEEVES

With smaller long circular needle, cast on 46 (50, 54, 58, 58) sts.

Work in K2, p2 Rib until piece measures about 1 1/2 in. (4 cm) from beg, end with a WS row as the last row you work.

Change to larger long circular needle.

Row 1 (RS): K1 (selvedge st), work Row 1 of Double Seed st to last st, k1 (selvedge st).

Row 2: K the knit sts and p the purl sts.

Increase Row (RS): K1, M1, work in Double Seed st as established to last st, M1, k1 – 48 (52, 56, 60, 60) sts.

Work even in pattern as established for 7 (7, 7, 5, 5) rows.

Rep Increase Row – 50 (54, 58, 62, 62) sts.

Rep last 8 (8, 8, 6, 6) rows for 11 (11, 12, 12, 14) more times – 72 (76, 82, 86, 90) sts.

Work even in pattern as established until piece measures about 18 1/2 (18 1/2, 18 1/2, 17 1/2, 17 1/2) in. (47 (47, 47, 44.5, 44.5) cm) from beg.

Bind off.

FINISHING

Sew shoulder seams.

Neckband

From RS with short circular needle, beg at right back neck, pick up and k5 sts evenly spaced along right back neck, knit 46 (50, 54, 58, 58) sts from back neck holder, pick up and k5 sts evenly spaced along left back neck and 13 sts evenly spaced along left front neck, knit 38 (42, 46, 50, 50) sts from front neck holder, and pick up and k13 sts evenly spaced along right front neck – 120 (128, 136, 144, 144) sts. Place marker for beg of rnd. Join by working the first st on the left hand needle with the working yarn from the right hand needle and being careful not to twist sts.

Rnd 1: Working in K2, p2 Rib, decrease 10 sts evenly spaced along center Back and 10 sts evenly spaced along center Front – 100 (108, 116, 124, 124) sts.

Work even in K2, p2 Rib worked in rnds for about 2 in. (5 cm).

For thousands of free patterns, visit our website www.LionBrand.com

To order visit our website www.lionbrand.com or call: (800) 258-YARN (9276) any time!

Copyright ©1998-2018 Lion Brand Yarn Company, all rights reserved.

No pattern or other material may be reproduced -- mechanically, electronically, or by any other means, including photocopying - without written permission of Lion Brand Yarn Company.

Bind off in rib.

Place markers on each side of Front and Back about 8 (8 1/2, 9, 9 1/2, 10) in. (20.5 (21.5, 23, 24, 25.5) cm) below from shoulder seams. Sew Sleeves between markers.

Sew Sleeve seams.

Sew side seams from underarm down to top of Front rib. Remainder of Front and Back are unsewn to make side slits.

ABBREVIATIONS

beg = begin(ning)

k = knit

k2tog = knit 2 stitches together

p = purl

rep = repeat

rnd(s) = round(s)

RS = right side

st(s) = stitch(es)

St st = Stockinette stitch

WS = wrong side

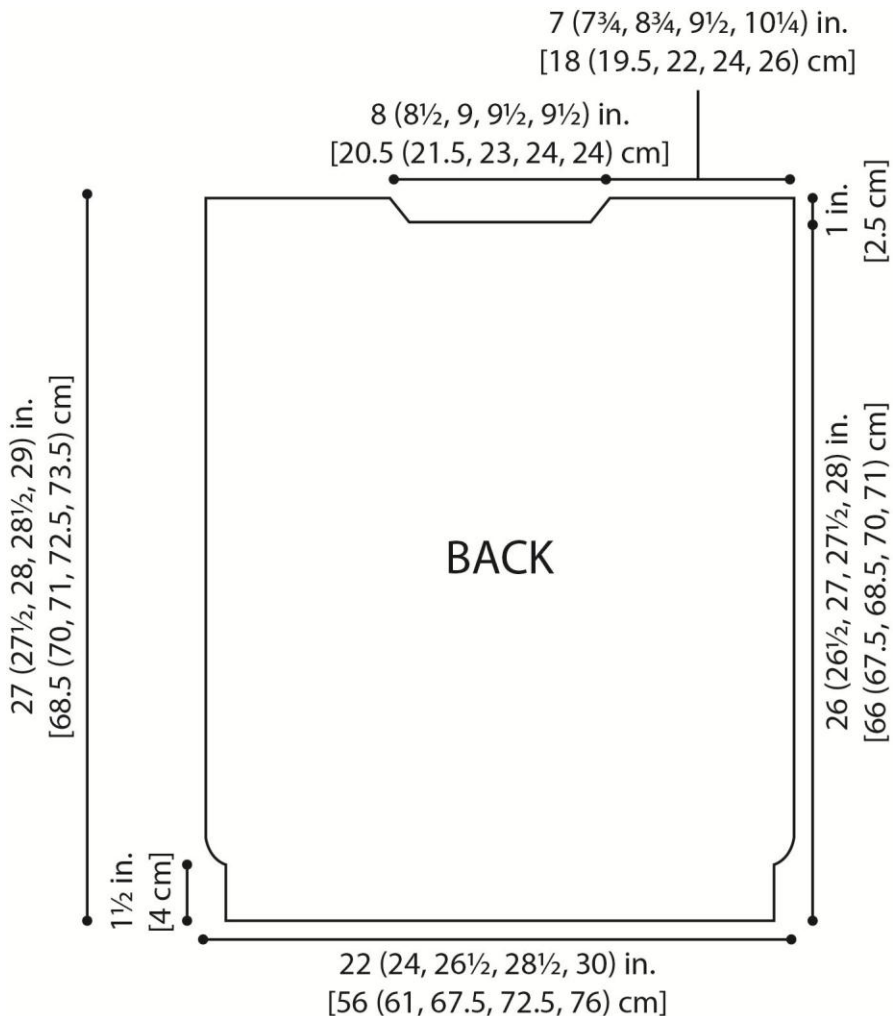
Every effort has been made to produce accurate and complete instructions. We cannot be responsible for variance of individual crafters, human error, or typographical mistakes.

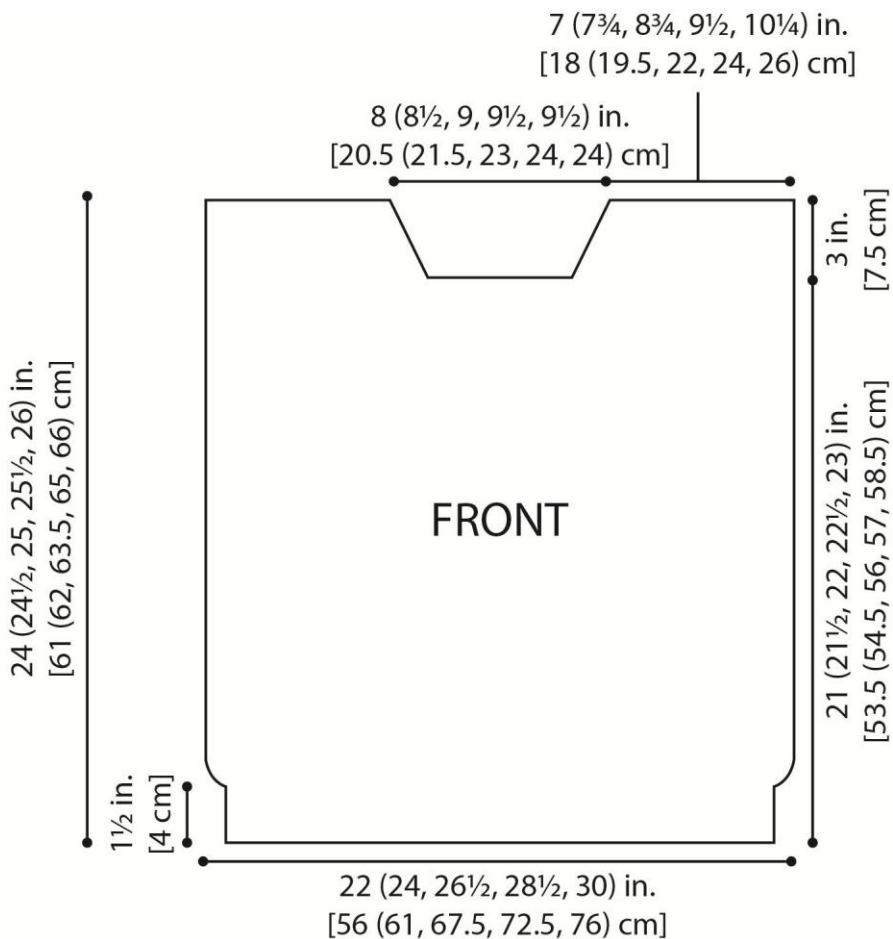
For thousands of free patterns, visit our website www.LionBrand.com

To order visit our website www.lionbrand.com or call: (800) 258-YARN (9276) any time!

Copyright ©1998-2018 Lion Brand Yarn Company, all rights reserved.

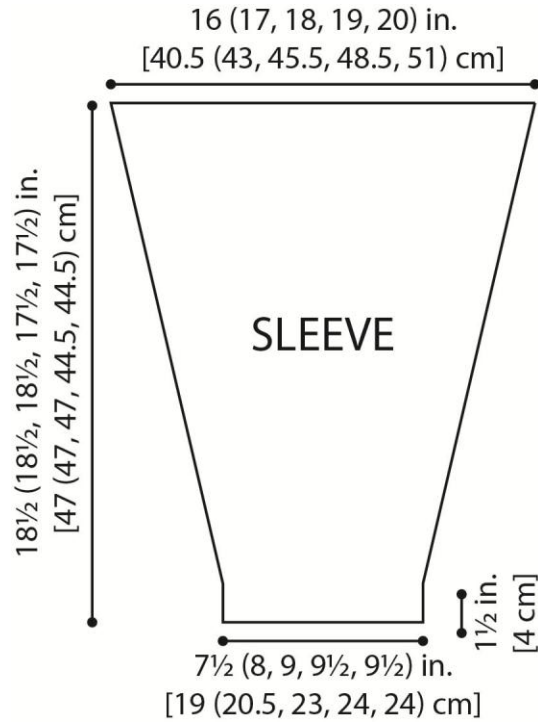
No pattern or other material may be reproduced -- mechanically, electronically, or by any other means, including photocopying - without written permission of Lion Brand Yarn Company.

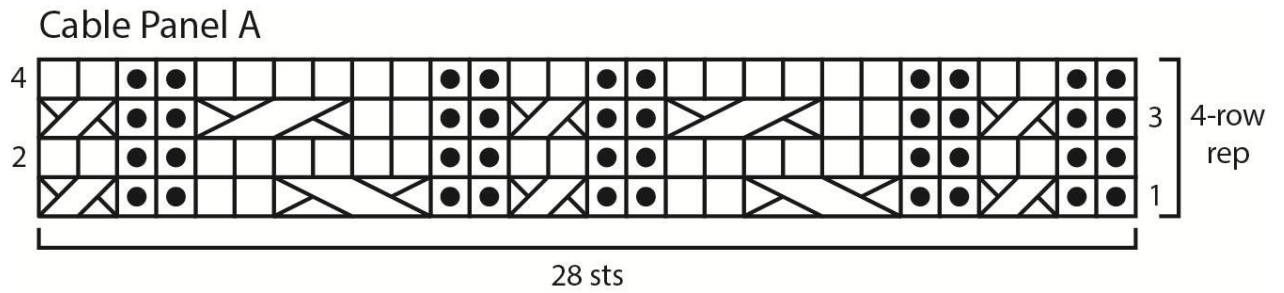


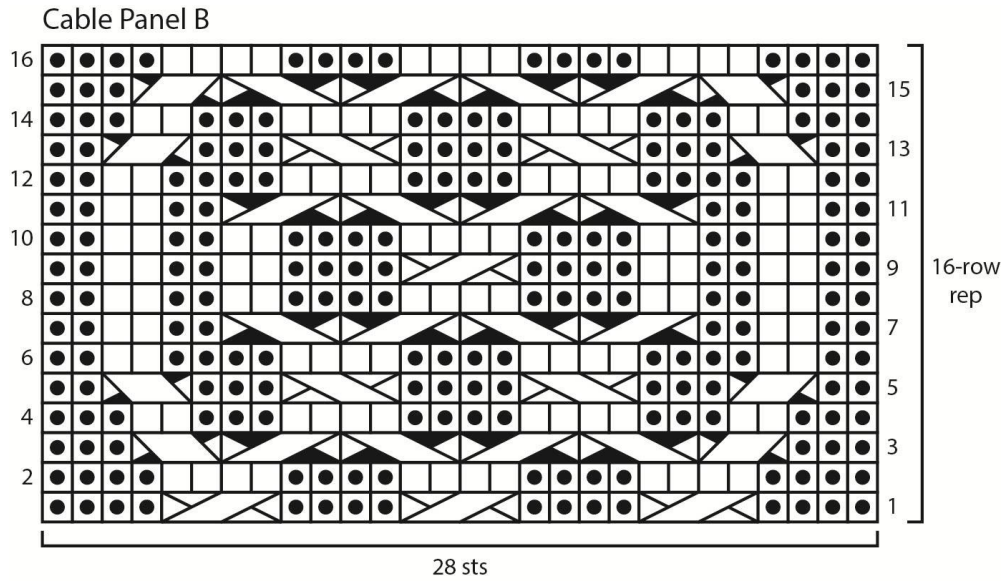


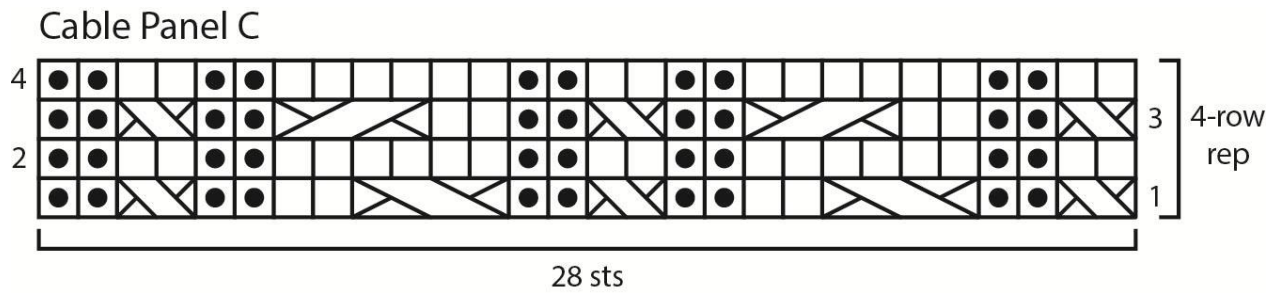
For thousands of free patterns, visit our website www.LionBrand.com
To order visit our website www.lionbrand.com or call: (800) 258-YARN (9276) any time!
Copyright ©1998-2018 Lion Brand Yarn Company, all rights reserved.

No pattern or other material may be reproduced -- mechanically, electronically, or by any other means, including photocopying - without written permission of Lion Brand Yarn Company.









KEY

 knit on RS, purl on WS


 purl on RS, knit on WS


 1/1 LC (1 over 1 left cross)


 1/1 RC (1 over 1 right cross)

 2/1 LPC (2 over 1 left purl cross)

 2/1 RPC (2 over 1 right purl cross)

 2/2 LC (2 over 2 left cross)

 2/2 RC (2 over 2 right cross)

 2/2 LPC (2 over 2 left purl cross)

 2/2 RPC (2 over 2 right purl cross)

For thousands of free patterns, visit our website www.LionBrand.com

To order visit our website www.lionbrand.com or call: (800) 258-YARN (9276) any time!

Copyright ©1998-2018 Lion Brand Yarn Company, all rights reserved.

No pattern or other material may be reproduced -- mechanically, electronically, or by any other means, including photocopying - without written permission of Lion Brand Yarn Company.