



Free Knitting Pattern
Lion Brand® Touch of Alpaca™
Stitch Sampler Afghan
Pattern Number: L80098
Designed by Irina Poludnenko



SKILL LEVEL – Easy

SIZE

About 46 x 49 in. (117 x 124.5 cm)

MATERIALS

- Lion Brand® Touch of Alpaca™ (Art. #674)
 - 108 Dusty Blue 2 balls (A)
 - 098 Cream 2 balls (B)
 - 158 Goldenrod 1 ball (C)
 - 123 Taupe 2 balls (D)
 - 126 Wood 2 balls (E)
 - 150 Oxford Grey 2 balls (F)
- Lion Brand® cable needle
- Lion Brand® large-eyed blunt needle



ADDITIONAL MATERIALS

Circular knitting needle size 7 (4.5 mm), 40 in. (101.5 cm) long

GAUGE

22 sts + 24 rows = about 4 in. (10 cm) in Cable pattern.

20 sts = about 4 in. (10 cm) in Dash pattern and Check pattern.

BE SURE TO CHECK YOUR GAUGE.

STITCH EXPLANATION

3/3 LC (3 over 3 left cross) Slip 3 sts to cable needle and hold in front, k3, then k3 from cable needle.

PATTERN STITCHES

Cable Pattern (worked over a multiple of 12 sts + 2 additional sts)

Row 1 (RS): Knit.

Rows 2-4: K1, *p6, k6; rep from * to last st, k1.

Row 5: K1, *p6, 3/3 LC; rep from * to last st, k1.

Rows 6-8: K1, *p6, k6; rep from * to last st, k1.

Row 9: Knit.

Rows 10-12: K1, *k6, p6; rep from * to last st, k1.

Row 13: K1, *3/3 LC, p6; rep from * to last st, k1.

Rows 14-16: K1, *k6, p6; rep from * to last st, k1.

Rep Rows 1-16 for Cable pattern.

Dash Pattern (worked over a multiple of 4 sts + 2 additional sts)

Row 1 (RS): Knit.

Row 2: K1, *p2, k2; rep from * to last st, k1.

Rep Rows 1 and 2 for Dash pattern.

For thousands of free patterns, visit our website www.LionBrand.com

To order visit our website www.lionbrand.com or call: (800) 258-YARN (9276) any time!

Copyright ©1998-2018 Lion Brand Yarn Company, all rights reserved.

No pattern or other material may be reproduced -- mechanically, electronically, or by any other means, including photocopying - without written permission of Lion Brand Yarn Company.

Check Pattern (worked over a multiple of 4 sts + 2 additional sts)

Row 1 (RS): Knit.

Rows 2-4: K1, *k2, p2; rep from * to last st, k1.

Row 5: Knit.

Rows 6-8: K1, *p2, k2; rep from * to last st, k1.

Rep Rows 1-8 for Checkerboard pattern.

NOTES

1. 3 Strips are made separately, then sewn together to make the Afghan.
2. Each Strip is worked in multiple yarn colors and stitch patterns.
3. The circular needle is used to accommodate the number of sts. Work back and forth on the circular needle just as if working on straight needles.
4. After Strips are sewn together, an edging is worked on outside edges.
5. Pattern sts can be worked by following written instructions or reading charts. Read RS rows of charts from right to left and WS rows from left to right.

STRIP I

With D, cast on 50 sts.

Beg with Row 1 of pattern, work Rows 1-16 of Cable pattern 3 times (48 rows).

Change to E.

Work in Check pattern for about 14 in. (35.5 cm), end with a WS row as the last row you work.

Change to C.

Work in Dash pattern for about 6 in. (15 cm), end with a WS row as the last row you work.

Change to F.

Work Rows 1-16 of Cable pattern 4 times (64 rows).

Change to A.

Work in Check pattern for about 2 1/2 in. (6.5 cm), end with a WS row as the last row you work.

Change to B.

Work in Dash pattern for about 7 1/2 in. (19 cm).

Bind off.

STRIP II

With E, cast on 110 sts.

Beg with Row 1 of pattern, work in Dash pattern for about 8 in. (20.5 cm), end with a WS row as the last row you work.

Change to A.

Work Rows 1-16 of Cable pattern 5 times (80 rows).

Change to D.

Work in Check pattern for about 6 in. (15 cm), end with a WS row as the last row you work.

Change to B.

For thousands of free patterns, visit our website www.LionBrand.com

To order visit our website www.lionbrand.com or call: (800) 258-YARN (9276) any time!

Copyright ©1998-2018 Lion Brand Yarn Company, all rights reserved.

No pattern or other material may be reproduced -- mechanically, electronically, or by any other means, including photocopying - without written permission of Lion Brand Yarn Company.

Work in Dash pattern for about 10 in. (25.5 cm), end with a WS row as the last row you work.

Change to C.

Work Rows 1-16 of Cable pattern once (16 rows).

Change to F.

Work in Check pattern for about 7 1/2 in. (19 cm).

Bind off.

STRIP III

With C, cast on 74 sts.

Beg with Row 1 of pattern, work Rows 1-16 of Cable pattern 3 times (48 rows).

Change to F.

Work in Dash pattern for about 14 in. (35.5 cm), end with a WS row as the last row you work.

Change to E.

Work Rows 1-16 of Cable pattern 2 times (32 rows).

Change to A.

Work in Check pattern for about 10 in. (25.5 cm), end with a WS row as the last row you work.

Change to B.

Work in Dash pattern for about 2 1/2 in. (6.5 cm), end with a WS row as the last row you work.

Change to D.

Work Rows 1-16 of Cable pattern 3 times (48 rows).

Bind off.

FINISHING

Sew long edges of Strips together in order: Strip I, Strip II, Strip III.

Edging

From RS with E, pick up and k230 sts evenly spaced along one short side edge of Afghan.

Knit 3 rows.

Bind off.

From RS with D, repeat on opposite short side edge of Afghan.

From RS with E, pick up and k249 sts evenly spaced along one long side edge of Afghan (including ends of previous edgings).

Knit 3 rows.

Bind off.

From RS with D, repeat on opposite long side edge of Afghan.

Weave in ends.

For thousands of free patterns, visit our website www.LionBrand.com

To order visit our website www.lionbrand.com or call: (800) 258-YARN (9276) any time!

Copyright ©1998-2018 Lion Brand Yarn Company, all rights reserved.

No pattern or other material may be reproduced -- mechanically, electronically, or by any other means, including photocopying - without written permission of Lion Brand Yarn Company.

ABBREVIATIONS

beg = begin(ning)

k = knit

p = purl

rep = repeat

RS = right side

st(s) = stitch(es)

WS = wrong side

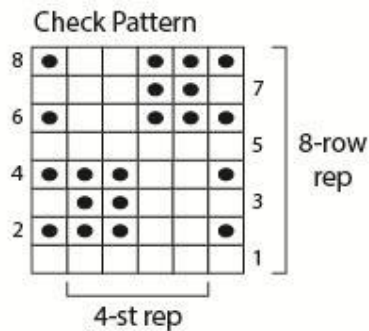
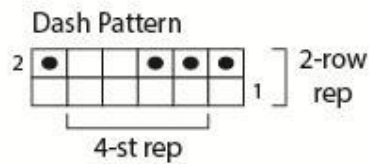
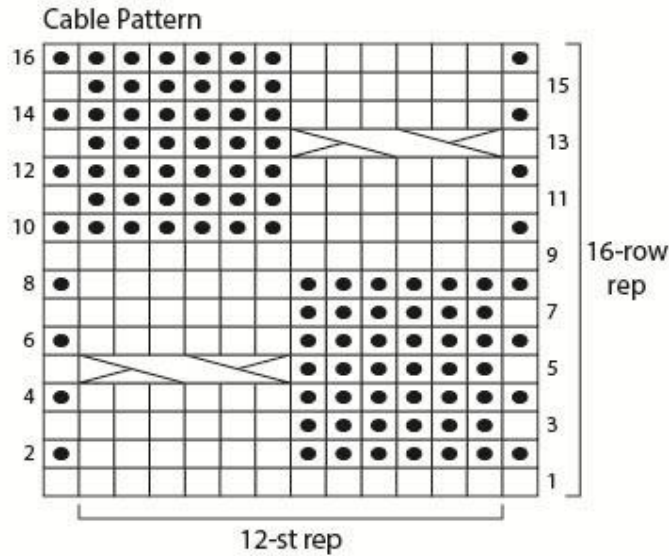
Every effort has been made to produce accurate and complete instructions. We cannot be responsible for variance of individual crafters, human error, or typographical mistakes.

For thousands of free patterns, visit our website www.LionBrand.com


To order visit our website www.lionbrand.com or call: (800) 258-YARN (9276) any time!

Copyright ©1998-2018 Lion Brand Yarn Company, all rights reserved.

No pattern or other material may be reproduced -- mechanically, electronically, or by any other means, including photocopying - without written permission of Lion Brand Yarn Company.



KEY

- knit on RS, purl on WS
- purl on RS, knit on WS
-  3/3 LC (3 over 3 left cross)