



Free Crochet Pattern
Lion Brand® Shawl in a Cake
Bianca Top
Pattern Number: L80190



SKILL LEVEL – Easy

SIZES

S/M (L/1X)

Finished Bust About 42 (50) in. (106.5 (127) cm)

Finished Length About 24 (25) in. (61 (63.5) cm)

Note Pattern is written for smaller size with changes for larger size in parentheses. When only one number is given, it applies to both sizes. To follow pattern more easily, circle all numbers pertaining to your size before beginning.

MATERIALS

- Lion Brand® Shawl in a Cake (Art. #455)
 - 305 Wind Chimes 3 (4) cakes
- Lion Brand® crochet hook size H-8 (5 mm)
- Lion Brand® stitch markers
- Lion Brand® large-eyed blunt needle



GAUGE

16 dc + 9 rows = about 4 in. (10 cm).

BE SURE TO CHECK YOUR GAUGE.

NOTES

1. Top is made from two rectangles: one for the Back/Sleeves and one for the Front.
2. Each piece is worked from side to side.
3. Rectangles are folded and sewn together following a diagram.

BACK/SLEEVES

Ch 98 (102).

Row 1: Dc in 4th ch from hook (3 skipped ch count as first dc) and in each ch across – you will have 96 (100) dc.

Row 2: Ch 3 (counts as dc), turn, sk first st, dc in each st across working last dc in top of beg ch-3.

Rep Row 2 until piece measures about 45 (50) in. (114.5 (127) cm) from beg.
Fasten off.

FRONT

Ch 98 (102).

Row 1: Dc in 4th ch from hook (3 skipped ch count as first dc) and in each ch across – you will have 96 (100) dc.

Row 2: Ch 3 (counts as dc), turn, sk first st, dc in each st across working last dc in top of beg ch-3.

Rep Row 2 until piece measures about 21 (25) in. (53.5 (63.5) cm) from beg.
Fasten off.

For thousands of free patterns, visit our website www.LionBrand.com

To order visit our website www.lionbrand.com or call: (800) 258-YARN (9276) any time!

Copyright ©1998-2018 Lion Brand Yarn Company, all rights reserved.

No pattern or other material may be reproduced -- mechanically, electronically, or by any other means, including photocopying - without written permission of Lion Brand Yarn Company.

FINISHING

Following diagram, sew pieces together.

1. **Sew shoulder seams:** Place Back/Sleeves onto a flat surface with longer edges at top and bottom. Place markers on top edge about 17 (19) in. (43 (48.5) cm) from each corner, leaving center 11 (12) in. (28 (30.5) cm) open for neck. Place markers on one side edge of Front about 5 (6 1/2) in. (12.5 (16.5) cm) from corners, leaving center 11 (12) in. (28 (30.5) cm) open for neck. Place Front on top of Back/Sleeves with markers matching. Sew shoulder seams between markers and Front corners.
2. **Fold Sleeves:** Place marker in center of each side edge of Front. Fold corners on each side of Back/Sleeves so that corners meet at center marker on Front side edge.
3. **Sew side seams:** Sew side edges of Front to edges of sleeves.

Weave in ends.

ABBREVIATIONS

beg = beginning

ch = chain

dc = double crochet

rep = repeat

sk = skip

st(s) = stitch(es)

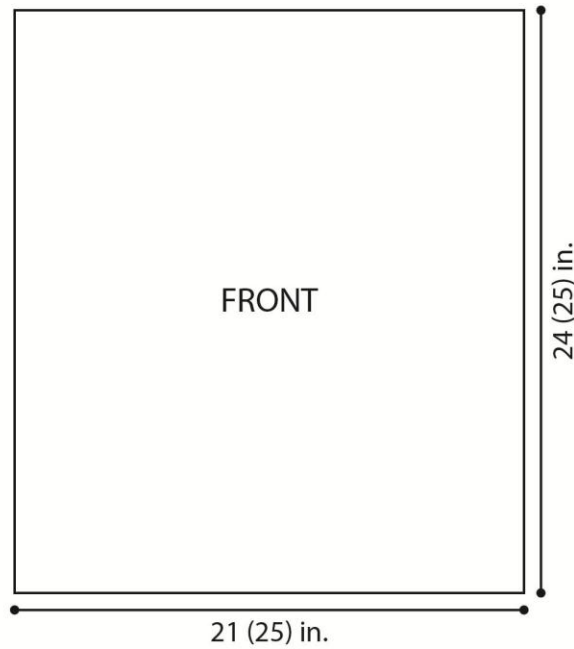
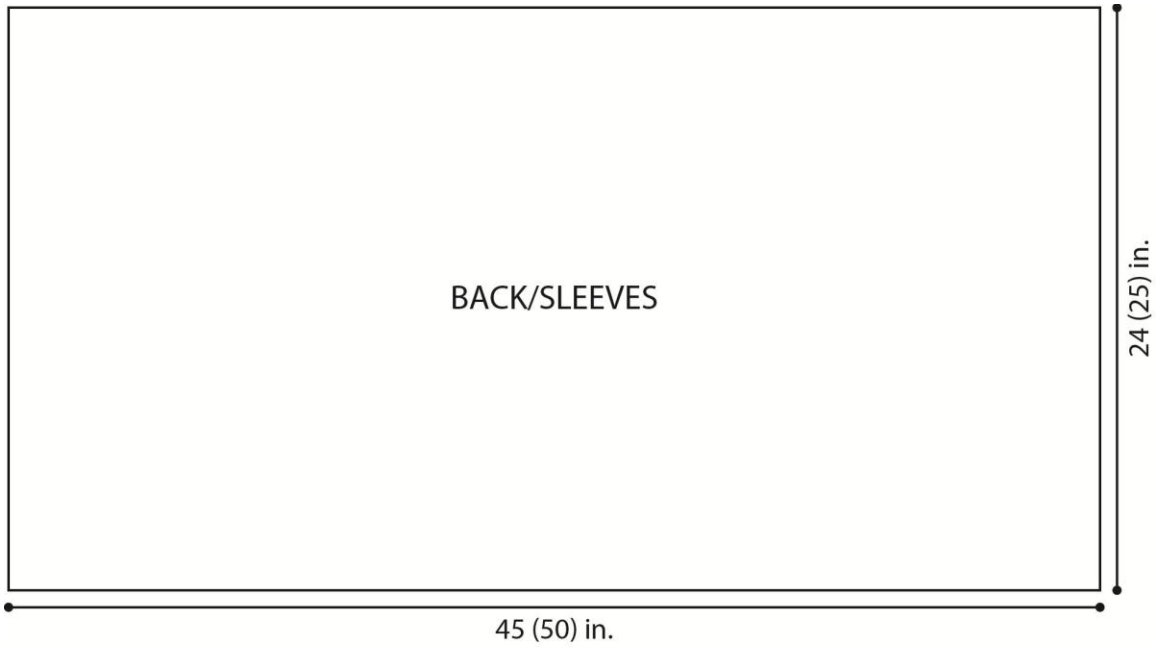
Every effort has been made to produce accurate and complete instructions. We cannot be responsible for variance of individual crafters, human error, or typographical mistakes.

For thousands of free patterns, visit our website www.LionBrand.com

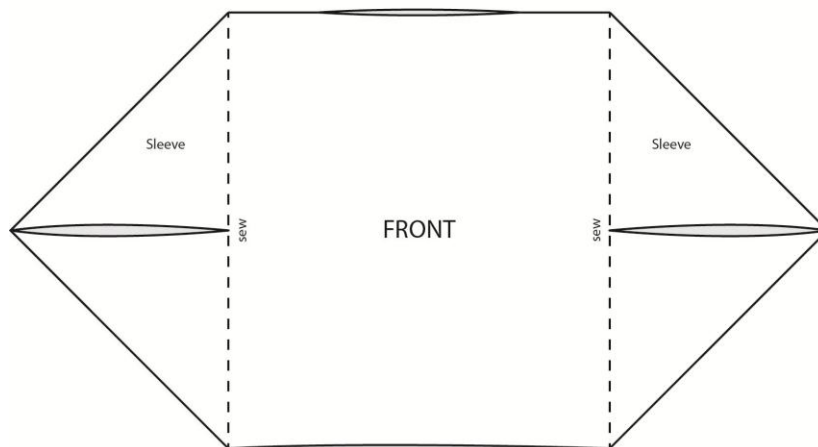
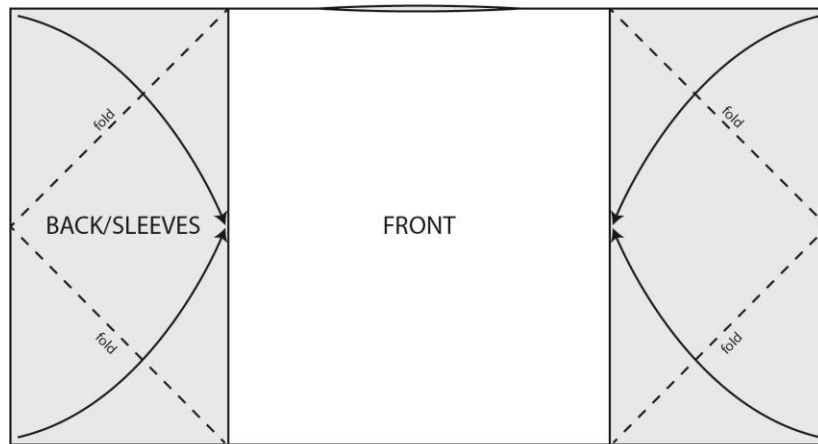
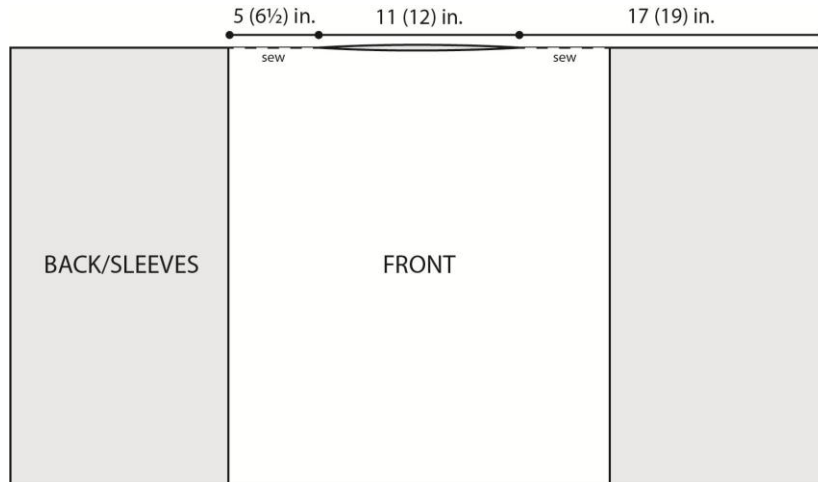
To order visit our website www.lionbrand.com or call: (800) 258-YARN (9276) any time!

Copyright ©1998-2018 Lion Brand Yarn Company, all rights reserved.

No pattern or other material may be reproduced -- mechanically, electronically, or by any other means, including photocopying - without written permission of Lion Brand Yarn Company.



**Lion Brand® Shawl in a Cake
Bianca Top
Pattern Number: L80190**



For thousands of free patterns, visit our website www.LionBrand.com
 To order visit our website www.lionbrand.com or call: (800) 258-YARN (9276) any time!
 Copyright ©1998-2018 Lion Brand Yarn Company, all rights reserved.
 No pattern or other material may be reproduced -- mechanically, electronically, or by any other means, including photocopying - without written permission of Lion Brand Yarn Company.