



Free Knitting Pattern
Lion Brand® Color Made Easy
Catskills Ruana
Pattern Number: L80213



SKILL LEVEL – Easy+

SIZES

S-L (1X/2X)

Finished Bust About 48 (57) in. (122 (145) cm)

Finished Length About 27 (28) in. (68.5 (71) cm), folded and seamed

Note: Pattern is written for smaller size with changes for larger size in parentheses. When only one number is given, it applies to both sizes. To follow pattern more easily, circle all numbers pertaining to your size before beginning.

MATERIALS

- Lion Brand® Color Made Easy (Art. #195)
 - 173 Avocado 5 (6) balls
- Lion Brand® circular knitting needle size 10.5 (6.5 mm), 29 in. (73.5 cm) long
- Lion Brand® crochet hook size K-10.5 (6.5 mm)
- Lion Brand® stitch markers
- Lion Brand® cable needle
- Lion Brand® large-eyed blunt needle



ADDITIONAL MATERIALS

One button, about 1 in. (25 mm) diameter

GAUGE

13 sts = about 3 1/2 in. (9 cm) in Box Rib pattern.

BE SURE TO CHECK YOUR GAUGE.

STITCH EXPLANATIONS

5/5 LC (5 over 5 left cross) Slip 5 sts to cable needle and hold in front, k5, then k5 from cable needle.

5/5 RC (5 over 5 right cross) Slip 5 sts to cable needle and hold in back, k5, then k5 from cable needle.

kfb (knit in front and back) Knit next st without removing it from left needle, then knit through back of same st – 1 st increased.

PATTERN STITCHES

Plait Cable (worked over 19 sts)

Row 1 (RS): P2, k15, p2.

Row 2: K2, p15, k2.

Rows 3 and 4: Rep Rows 1 and 2.

Row 5: P2, 5/5 LC, k5, p2.

Row 6: K2, p15, k2.

Rows 7-12: Rep Rows 1 and 2 for 3 times.

Row 13: P2, k5, 5/5 RC, p2.

Row 14: K2, p15, k2.

For thousands of free patterns, visit our website www.LionBrand.com

To order visit our website www.lionbrand.com or call: (800) 258-YARN (9276) any time!

Copyright ©1998-2018 Lion Brand Yarn Company, all rights reserved.

No pattern or other material may be reproduced -- mechanically, electronically, or by any other means, including photocopying - without written permission of Lion Brand Yarn Company.

Rows 15 and 16: Rep Rows 1 and 2.
Rep Rows 1-16 for Plait Cable.

Box Rib (worked over an odd number of sts)

Row 1 (RS): Knit.

Row 2: K1, *p1, k1; rep from * across.
Rep Rows 1 and 2 for Box Rib pattern.

NOTES

1. Ruana is worked in one piece beginning at lower back edge.
2. The piece is divided at back neck then both fronts are worked AT THE SAME TIME using separate balls of yarn.
3. Ruana is worked in Box Rib pattern with a cable worked along each center front edge.
4. The Plait Cable can be worked by following written instructions or the Chart. Read RS rows of Chart from right to left and WS rows from left to right.
5. A circular needle is used to accommodate the number of stitches. Work back and forth in rows on the circular needle as if working on straight needles.
6. When you see 'work in pattern as established' in the instructions, this means you should work the next row of the pattern sts, lining up sts as in previous rows.
7. A crochet hook is used to make the button loop.

RUANA

Back

Cast on 89 (105) sts.

Beg with Row 1, work in Box Rib pattern until piece measures about 24 (25) in. (61 (63.5) cm) from beg, end with a Row 2 as the last row you work.

Divide at Back Neck

Row 1 (RS): K1, kfb, work Row 1 of Box Rib pattern over next 40 (48) sts, kfb, k1 for right front; join a 2nd ball of yarn and bind off center st, kfb, work Row 1 of Box Rib pattern to last 2 sts, kfb, k1 for left front – you will have 46 (54) sts for each front.

You will now work both fronts AT THE SAME TIME using separate balls of yarn.

Row 2 (Cable Set-Up Row): On left front, work in Box Rib pattern as established to last 20 sts, place marker (pm), work Row 2 of Plait Cable over next 19 sts, pm, k1 (edge st); on right front, k1 (edge st), pm, work Row 2 of Plait Cable over next 19 sts, pm, work in Box Rib pattern as established to end of row.

Row 3: On right front, work in Box Rib pattern as established to marker, slip marker (sm), work Row 3 of Plait Cable to next marker, sm, k1; on left front, k1, sm, work Row 3 of Plait Cable to next marker, sm, work in Box Rib pattern as established to end of row.

Row 4: On left front, work in Box Rib pattern as established to marker, sm, work in Plait Cable as established to next marker, sm, k1; on right front, k1, sm, work in Plait Cable as established to next marker, sm, work in Box Rib pattern as established to end of row.

Row 5: On right front, work in Box Rib pattern as established to marker, sm, work Plait Cable as established to next marker, sm, k1; on left front, k1, sm, work Plait Cable as established to next marker, sm, work in Box Rib pattern as established to end of row.

Rep Rows 4 and 5, working both fronts AT THE SAME TIME with separate balls of yarn. Work until piece measures about 30 (31) in. (76 (78.5) cm) from divide, end with a Row 2, 4, 10 or 12 of the Plait Cable.

Bind off each front as if to knit.

FINISHING

Fold piece in half along shoulder line. The back neck will be about 3 in. (7.5 cm) below shoulders.

Place markers on back and front side edges about 9 (10) in. (23 (25.5) cm) below shoulders. Place a second marker on each side about 3 1/2 in. (9 cm) above lower edge.

Sew side seams between markers.

Button Closure

Try on Ruana to determine best placement for button closure. Place a marker on both front edges at desired button closure location. Sew button at marker on left front.

From RS with crochet hook, join yarn with a slip st near marker on right front, make a chain long enough to accommodate button, slip st again near marker on right front to join yarn.

Fasten off.

Weave in ends.

ABBREVIATIONS

beg = begin(ning)(s)

k = knit

p = purl

rep = repeat

RS = right side

st(s) = stitch(es)

WS = wrong side

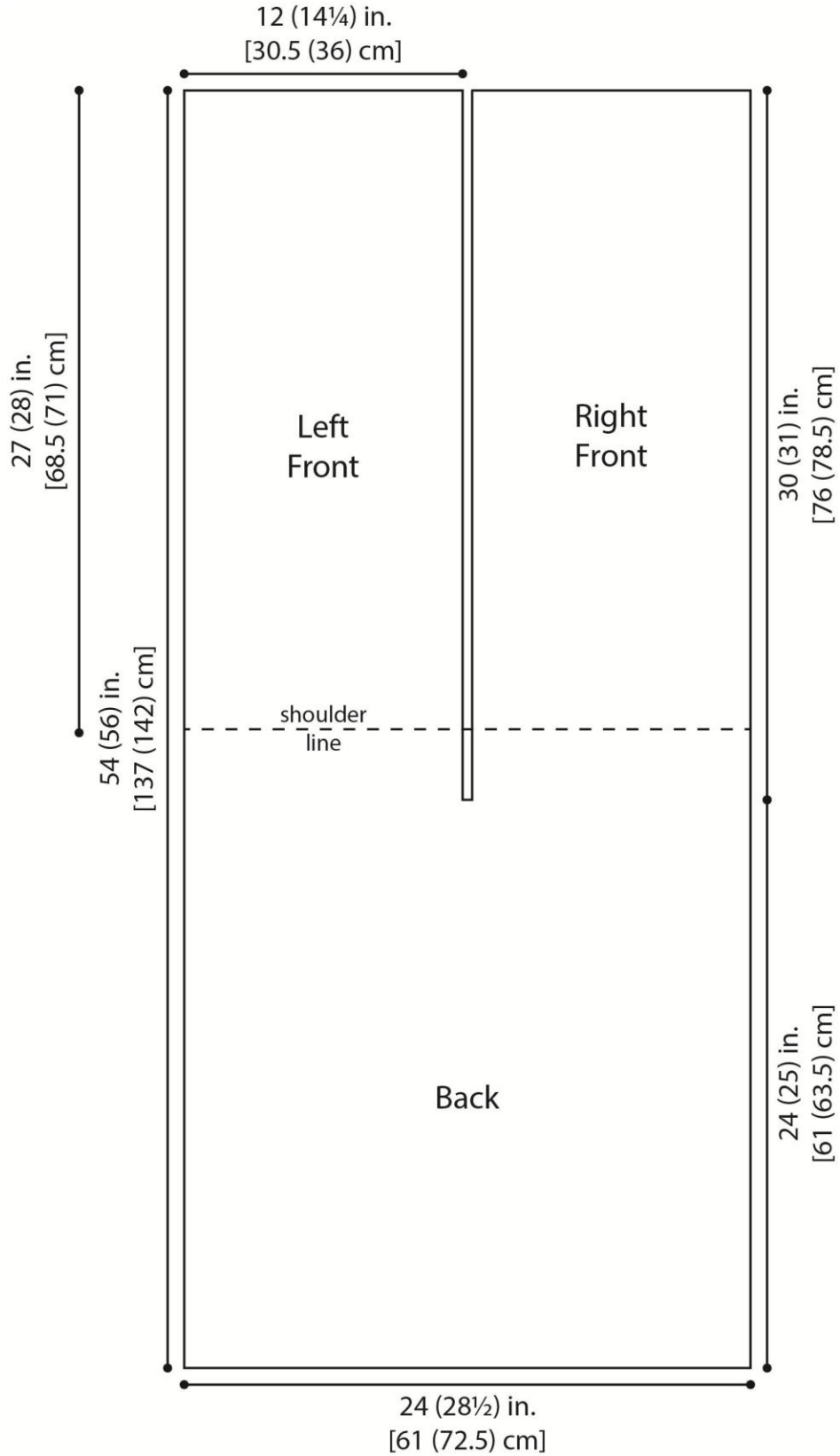
Every effort has been made to produce accurate and complete instructions. We cannot be responsible for variance of individual crafters, human error, or typographical mistakes.

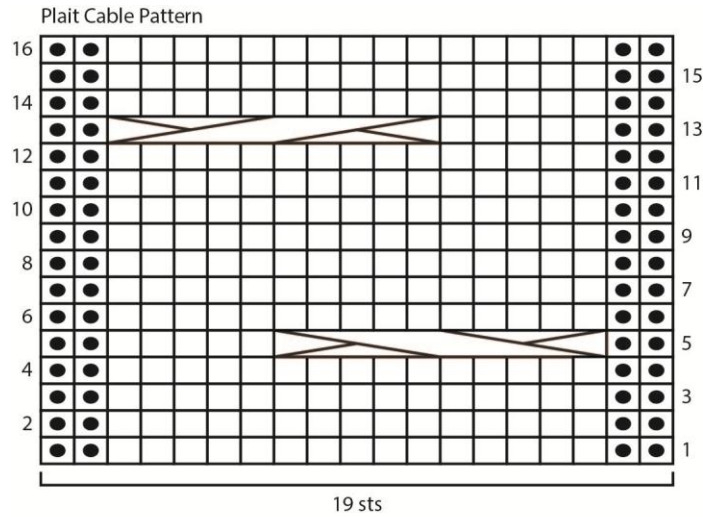
For thousands of free patterns, visit our website www.LionBrand.com



To order visit our website www.lionbrand.com or call: (800) 258-YARN (9276) any time!

Copyright ©1998-2018 Lion Brand Yarn Company, all rights reserved.

No pattern or other material may be reproduced -- mechanically, electronically, or by any other means, including photocopying - without written permission of Lion Brand Yarn Company.





KEY	
<input type="checkbox"/>	knit on RS, purl on WS
<input checked="" type="checkbox"/>	purl on RS, knit on WS
	5/5 LC (5 over 5 left cross)
	5/5 RC (5 over 5 right cross)