



Free Crochet Pattern
Lion Brand® Color Made Easy
Evergreen Avenue Scarf
Pattern Number: L80209B
Designed by Sarah Zee



SKILL LEVEL – Easy

SIZE

About 12 x 69 in. (30.5 x 175.5 cm)

MATERIALS

- Lion Brand® Color Made Easy (Art. #195)
 - 110 Huckleberry 1 ball (A)
 - 178 Malachite 1 ball (B)
 - 173 Avocado 1 ball (C)
- Lion Brand® crochet hook size N (10 mm)
- Lion Brand® large-eyed blunt needle



GAUGE

5 sc + 4 ch-1 sps = about 4 in. (10 cm) over Rows 2 and 3.

BE SURE TO CHECK YOUR GAUGE.

NOTES

1. Scarf is worked in one piece, back and forth in rows, with 3 colors of yarn.
2. To change yarn color, work last st of old color to last yarn over. Yarn over with new color and draw through all loops on hook to complete the st. Do not fasten off old color. Carry colors not in use up side edges of piece until next needed.
3. For those who find a visual helpful, we've included a stitch diagram.

STRIPE SEQUENCE

Work 1 row with A, 1 row with B, 1 row with C. Repeat for Stripe Sequence.

SCARF

With A, ch 28.

Row 1: Sc in 2nd ch from hook, *ch 1, sk next ch, sc in next ch; rep from * across – you will have 14 sc and 13 ch-1 sps in this row.

Change to B.

Row 2: With B, ch 1, turn, sc in first sc, sc in next ch-1 sp, *ch 1, sk next sc, sc in next ch-1 sp; rep from * to last st, sc in last sc – 15 sc and 12 ch-1 sps.

Change to C.

Row 3: With C, ch 1, turn, sc in first sc, *ch 1, sk next sc, sc in next ch-1 sp; rep from * to last 2 sts, ch 1, sk next sc, sc in last sc – 14 sc and 13 ch-1 sps.

Change to A.

Rep Rows 2 and 3 and continue to change yarn color following Stripe Sequence until piece measures about 69 in. (175.5 cm) from the beginning, ending with a row worked with C.

Fasten off.

FINISHING

Weave in ends.

For thousands of free patterns, visit our website www.LionBrand.com

To order visit our website www.lionbrand.com or call: (800) 258-YARN (9276) any time!

Copyright ©1998-2018 Lion Brand Yarn Company, all rights reserved.

No pattern or other material may be reproduced -- mechanically, electronically, or by any other means, including photocopying - without written permission of Lion Brand Yarn Company.

ABBREVIATIONS

ch = chain(s)

ch-sp(s) = chain space(s) previously made

rep = repeat

sc = single crochet

sk = skip

st(s) = stitch(es)

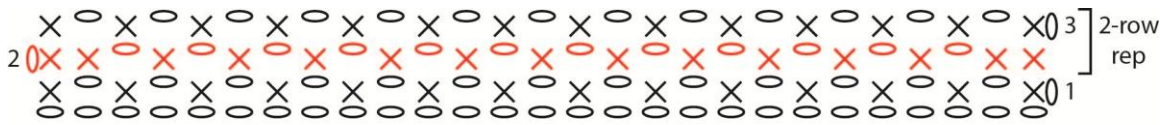
Every effort has been made to produce accurate and complete instructions. We cannot be responsible for variance of individual crafters, human error, or typographical mistakes.

For thousands of free patterns, visit our website www.LionBrand.com

To order visit our website www.lionbrand.com or call: (800) 258-YARN (9276) any time!

Copyright ©1998-2018 Lion Brand Yarn Company, all rights reserved.

No pattern or other material may be reproduced -- mechanically, electronically, or by any other means, including photocopying - without written permission of Lion Brand Yarn Company.



KEY
 O = chain (ch)
 X = single crochet (sc)