



Free Crochet Pattern
Lion Brand® Scarfie
Asta Dog Sweater
Pattern Number: L50182



Designed by Karen Hay.

Free Crochet Pattern from Lion Brand Yarn

Lion Brand® Scarfie

Asta Dog Sweater

Pattern Number: L50182

SKILL LEVEL: Easy + (Level 3)

SIZE: Small, Medium, Large, XL

Finished Neck Circumference About 12 (14, 16, 18) in. (30.5 (35.5, 40.5, 45.5) cm)

Finished Chest About 16 (20, 24, 28) in. (40.5 (51, 61, 71) cm). Finished chest measurement includes about 2 (2, 3, 3,) in. (5 (5, 7.5, 7.5) cm) of Belts and can be adjusted by placement of buttons.

Finished Length 11 (15, 18 1/2, 24) in. (28 (38, 47, 61) cm), including neck ribbing.

Note: Pattern is written for smallest size with changes for larger sizes in parentheses. When only one number is given, it applies to all sizes. To follow pattern more easily, circle all numbers pertaining to your size before beginning.

CORRECTIONS: None as of Jul 15, 2016. To check for later updates, click [here](#).

MATERIALS

- 826-204 Lion Brand Scarfie: **Scarfie (Article #826). 78% acrylic, 22% wool; package size: 5.30oz/150.00 gr. (312yds/285m) pull skeins*
Denim/Navy
1 1, 2, 2 Ball
- Lion Brand Crochet Hook - Size J-10 (6 mm)
- Lion Brand Large-Eye Blunt Needles (Set of 6)
- Additional Materials
2 buttons, 1 1/2 in. (38 mm) diameter



GAUGE:

12 hdc + 9 1/2 rows = about 4 in. (10 cm).

When you match the gauge in a pattern, your project will be the size specified in the pattern and the materials specified in the pattern will be sufficient. The needle or hook size called for in the pattern is based on what the designer used, but it is not unusual for gauge to vary from person to person. If it takes you fewer stitches and rows to make your swatch, try using a smaller size hook or needles; if more stitches and rows, try a larger size hook or needles.

Making a Gauge Swatch

NOTES:

1. Back, Underpiece and 2 Belts are worked separately then sewn together.
 2. Hunter, a gorgeous and very well-behaved retriever, was super comfortable wearing our size XL sweaters, but dogs come in many shapes and sizes! To ensure a well-fitting sweater, compare your dog's measurements to those shown on the schematics. While crochet is stretchy and will accommodate a range of sizes, you may want to adjust the pattern before beginning – perhaps making the Back of the sweater longer if your dog likes to be extra cozy or the neck bigger if your best friend is especially fluffy!

BACK

Ribbing

Ch 4 (4, 6, 7).

Row 1: Sc in 2nd ch from hook and in each ch across – you will have 3 (3, 5, 6) sc in this row.

Row 2: Ch 1, turn, working in back loops only, sc in each st across.

Rep Row 2 until piece measures about 9 (10, 11, 12) in. (23 (25.5, 28, 30.5) cm) slightly stretched.

Do not fasten off.

Body

Row 1: Ch 1, work 27 (30, 33, 36) sc evenly spaced across long edge of ribbing.

Next 2 (2, 1, 1) Row(s): Ch 1 (does not count as a st), turn, hdc in each st across.

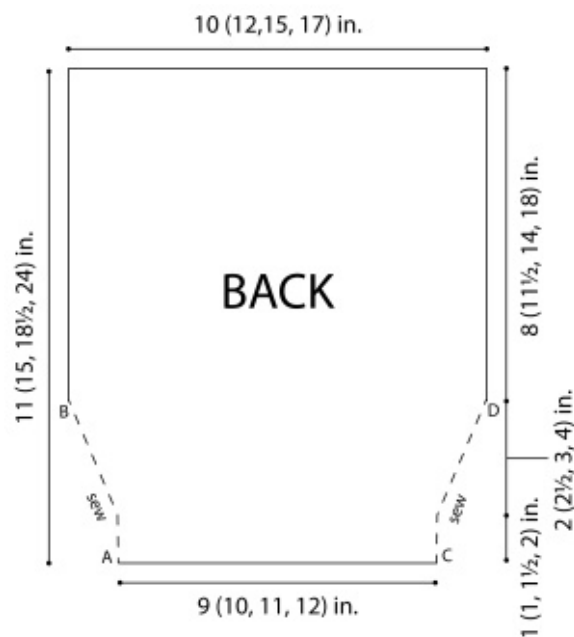
Increase Row: Ch 1 (does not count as a st), turn, 2 hdc in first st, hdc in each st to last st, 2 hdc in last st – you will have 29 (32, 35, 38) hdc at the end of this row.

Rep Increase Row 1 (2, 5, 7) more time(s) – 31 (36, 45, 52) hdc.

Next Row: Ch 1 (does not count as a st), turn, hdc in each st across.

Rep last row until piece measures about 11 (15, 18 1/2, 24) in. (28 (38, 47, 61) cm) from beg.

Fasten off.



UNDERPIECE

Ribbing

Ch 4 (4, 6, 7).

Row 1: Sc in 2nd ch from hook and in each ch across – you will have 3 (3, 5, 6, 6) sc in this row.

Row 2: Ch 1, turn, working in back loops only, sc in each st across.

Rep Row 2 until piece measures about 3 (4, 5, 6) in. (7.5 (10, 12.5, 15) cm). Do not fasten off.

Body

Row 1: Ch 1, work 9 (12, 15, 18) sc evenly spaced across long edge of ribbing.

Next 2 (2, 1, 3) Row(s): Ch 1 (does not count as a st), turn, hdc in each st across.

Increase Row: Ch 1 (does not count as a st), turn, 2 hdc in first st, hdc in each st to last st, 2 hdc in last st – 11 (14, 17, 20) hdc.

Note: When you see '0' repeats in an instruction, this means that you should not perform that particular instruction, just skip to the next part of the instruction.

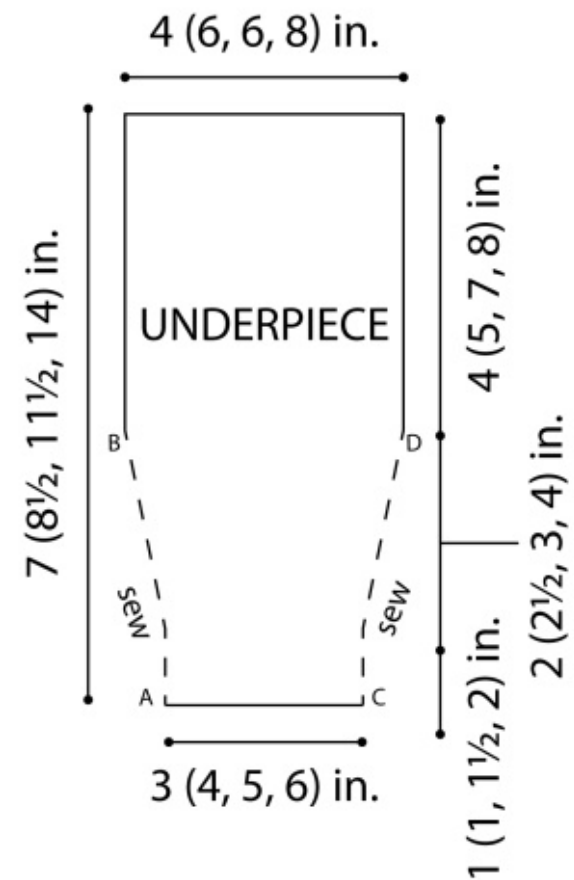
Next 0 (0, 2, 1) Row(s): Ch 1 (does not count as a st), turn, hdc in each st across.

Rep last 1 (1, 3, 2) rows 1 (2, 1, 2) more time(s) – 13 (18, 19, 24) hdc.

Next Row: Ch 1 (does not count as a st), turn, hdc in each st across.

Rep last row until piece measures about 7 (8 1/2, 11 1/2, 14) in. (18 (21.5, 29, 35.5) cm) from beg.

Fasten off.



BELTS (make 2)

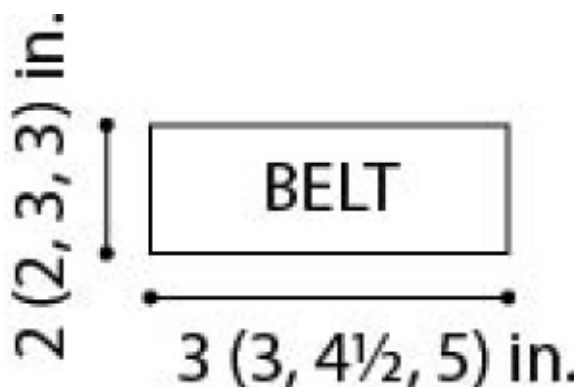
Ch 7 (7, 9, 9).

Row 1: Sc in 2nd ch from hook and in each ch across – 6 (6, 8, 8) sc.

Row 2: Ch 1, turn, sc in each st across.

Rep Row 2 until piece measures about 2 (2, 3 1/2, 4) in. (5 (5, 9, 10) cm) from beg.

Buttonhole Row: Ch 1, turn, sc in first 2 (2, 3, 3) sts, ch 2, skip next 2 sts



for buttonhole, sc in last 2 (2, 3, 3) sts.

Next Row: Ch 1, turn, sc in each sc and ch across – 6 (6, 8, 8) sc.

Next Row: Ch 1, turn, sc in each st across.

Rep last row until piece measures about 3 (3, 4 1/2, 5) in. (7.5 (7.5, 11.5, 12.5) cm) from beg.

Fasten off.

FINISHING

Following diagrams, match points A and B of Back to points A and B of Underpiece. Sew Back to Underpiece between points A to B. Rep with points C and D.

Try Sweater on your dog to determine where the Belts should be sewn - this should be around the midsection ('waist') of dog.

Sew cast on end of each Belt to each side of Underpiece. Slip Sweater onto dog to determine placement of buttons on Back of Sweater. Sew buttons to Back.

Weave in ends.

ABBREVIATIONS / REFERENCES	
Click for explanation and illustration	
<u>beg = begin(s)(ning)</u>	<u>ch(s) = chain(s)</u>
<u>hdc = half double crochet</u>	<u>rep = repeat(s)(ing)</u>
<u>sc = single crochet</u>	<u>st(s) = stitch(es)</u>

Learn to crochet instructions: <http://www.lionbrand.com/learn/how-to-crochet>

Every effort has been made to have the knitting and crochet instructions accurate and complete. We cannot be responsible for variance of individual knitters and crocheters, human errors, or typographical mistakes.

We want your project to be a success! If you need help with this or any other Lion Brand pattern, e-mail support is available 7 days per week. Just click [here](#) to explain your problem and someone will help you!

**For thousands of free patterns, visit our website www.LionBrand.com
To order visit our website www.lionbrand.com or call: (800) 258-YARN (9276) any time!**

**When in New York City, visit the Lion Brand Yarn Studio where we have the largest selection of our yarns
anywhere and over 100 classes and events monthly.**

34 West 15th Street, NY, NY 10011

Copyright ©1998-2016 Lion Brand Yarn Company, all rights reserved. No pattern or other material may be reproduced -- mechanically, electronically, or by any other means, including photocopying -- without written permission of Lion Brand Yarn Company.