



Free Knitting Pattern
Lion Brand® Touch Of Alpaca™
Lane Poncho
Pattern Number: L80317
Designed by Vladimir/Meli



SKILL LEVEL – Intermediate

SIZE

One Size

Finished Width About 51 in. (129.5 cm)

Finished Length About 30 in. (76 cm)

MATERIALS

- Lion Brand® Touch Of Alpaca™ (Art. #674)
 - 150 Oxford Grey 6 balls (A)
 - 108 Dusty Blue 4 balls (B)
- Lion Brand® cable needle
- Lion Brand® stitch markers
- Lion Brand® large-eyed blunt needle



ADDITIONAL MATERIALS

Circular knitting needle size 8 (5 mm), 16 in. (40.5 cm) long

Circular knitting needle size 8 (5 mm), 40 in. (101.5 cm) long

Circular knitting needle size 10 (6 mm), 29 in. (73.5 cm) long

GAUGE

14 sts + 19 rows = 4 in. (10 cm) in K2, p2 rib, slightly stretched, using larger needles.

BE SURE TO CHECK YOUR GAUGE.

NOTES

1. Poncho is worked in 2 pieces, Left Side and Right Side. Pieces are worked from lower edge of front, over shoulders, to lower edge of back. Left Side is worked in K2, p2 Rib, Right Front is worked in a cable pattern.
2. The cable pattern on the Right Front can be worked from the written instructions or the chart. When working from chart, read RS rows from right to left and WS rows from left to right.
3. Turtleneck is worked in the round from sts picked up around the neck of completed Poncho. Turtleneck is folded to inside to create a double thick neck.
4. Borders are worked from sts picked up along edges of completed Poncho.
5. A circular needle is used to accommodate the number of sts. Work back and forth on the circular needle as if working on straight needles.
6. End with a WS row means that the last row you work should be a WS row, and the next row that you are ready to work will be a RS row.
7. When you see "- 12 sts" in the instructions, this lets you know how many sts you will have at the end of that specific row.

For thousands of free patterns, visit our website www.LionBrand.com

To order visit our website www.lionbrand.com or call: (800) 258-YARN (9276) any time!

Copyright ©1998-2018 Lion Brand Yarn Company, all rights reserved.

No pattern or other material may be reproduced -- mechanically, electronically, or by any other means, including photocopying - without written permission of Lion Brand Yarn Company.

STITCH EXPLANATIONS

4/4 LC (4 over 4 left cross) Slip 4 sts to cable needle and hold in front of work, k4, then k4 from cable needle.

4/4 RC (4 over 4 right cross) Slip 4 sts to cable needle and hold in back of work, k4, then k4 from cable needle.

kfb (knit in front and back) Knit next st without removing it from left needle, then k through back of same st – 1 st increased.

PATTERN STITCHES

K2, p2 Rib (worked over a multiple of 4 sts + 2 additional sts)

Row 1: K2, *p2, k2; rep from * to end of row.

Row 2: K the knit sts and p the purl sts.

Rep Row 2 for K2, p2 Rib.

Braided Cable (multiple of 15 sts)

Row 1 (RS): *P3, k12; rep from *.

Row 2 and All WS Rows: *P12, k3; rep from *.

Row 3: *P3, k4, 4/4 LC; rep from *.

Row 5: *P3, k12; rep from *.

Row 7: *P3, 4/4 RC, k4; rep from *.

Row 8: *P12, k3; rep from *.

Rep Rows 1-8 for Braided Cable.

LEFT SIDE

With smaller, longer needle and B, cast on 68 sts.

Row 1 (RS): P1, work Row 1 of K2, p2 rib to last st, p1.

Row 2: K1, work in K2, p2 rib to last st, k1.

Continue as established, working first and last st in rev St st (p on RS, k on WS) and remaining sts in K2, p2 Rib until piece measures about 3 1/2 in. (9 cm) from beg, end with a WS row as the last row you work.

Change to larger needle and continue as established until piece measures 56 1/2 in. (143.5 cm) from beg, end with a WS row as the last row you work.

Change to smaller needle and continue as established for 3 1/2 in. (9 cm).

Bind off.

RIGHT SIDE

With smaller, longer needle and A, cast on 102 sts.

Row 1 (RS): P3, *k2, p2; rep from * to last 3 sts, k2, p1.

Row 2: K1, *p2, k2; rep from * to last st, k1.

Rep Rows 1 and 2 until piece measures about 3 1/2 in. (9 cm) from beg, end with a RS row as the last row you work.

Next Row (Increase Row WS): K1, p2, k2, *p2, kfb, k1; rep from * to last 5 sts, p2, k3 – you will have 125 sts at the end of this row.

Change to larger needle.

For thousands of free patterns, visit our website www.LionBrand.com

To order visit our website www.lionbrand.com or call: (800) 258-YARN (9276) any time!

Copyright ©1998-2018 Lion Brand Yarn Company, all rights reserved.

No pattern or other material may be reproduced -- mechanically, electronically, or by any other means, including photocopying - without written permission of Lion Brand Yarn Company.

Note In the next section, you will be working the Braided Cable pattern. You can work the cable from the written instructions or from the chart, your choice!

Row 1 (RS): Work Row 1 of Braided Cable across to last 5 sts, p2, k2, p1.

Row 2: K1, p2, k2, work next row of Braided Cable to end of row.

Work in patterns as established until piece measures about 26 in. (66 cm) from beg, end with a WS row as the last row you work.

Shape Front Neck

Next Row (RS): Keeping in patterns, work 11 sts for left shoulder, join a 2nd ball of yarn and bind off 9 sts for neck, work to end of row for right shoulder – at the end of this row you will have 11 sts for left shoulder and 105 sts for right shoulder.

Note You will now work both sides AT THE SAME TIME with separate balls of yarn.

Continuing in patterns as established, bind off 3 sts from each neck edge once, 2 sts from each neck edge once, then 1 st from each neck edge 4 times. When all bind offs are finished, you'll have 2 sts for left shoulder and 96 sts for right shoulder.

Continue in patterns as established and work both shoulders AT THE SAME TIME with separate balls of yarn until piece measures about 31 in. (76 cm) from beg, end with a WS row as the last row you work.

Shape Back Neck

Continuing to work both shoulders with separate balls of yarn in patterns as established, cast on 2 sts at each neck edge twice – you will have 6 sts for left shoulder and 100 sts for right shoulder.

Cut the 2nd ball of yarn and from this point on, work with one ball of yarn only.

Next Row (RS): Work 6 sts, cast on 19 sts, work to end of row – 125 sts.

Next Row (WS): K1, p2, k2, work in Braided Cable to end of row.

Continue as established until piece measures about 56 1/2 in. (143.5 cm), end with a RS row as the last row you work.

Next Row (Decrease Row WS): K1, p2, k2, *p2tog, p1, k2; rep from * to last 5 sts, p2, k3 – you will have 102 sts at the end of this row.

Change to smaller needle.

Row 1: P3, *k2, p2; rep from * to last 3 sts, k2, p1.

Row 2: K1, *p2, k2; rep from * to last st, k1.

Rep Rows 1 and 2 for 3 1/2 in. (9 cm).

Bind off.

FINISHING

Sew long edges of Left and Right Sides together.

Turtleneck

From RS with shortest circular needle and A, beg at one shoulder edge of neck, pick up and k64 sts evenly spaced around neck edge. Place marker for beg of rnd and join by knitting the first st on the left hand needle with the working yarn from the right hand needle.

Rnd 1 (RS): *K2, p2; rep from * around.

Rep Rnd 1 until turtleneck measures about 9 in. (23 cm).

Bind off.

Fold bound-off edge to WS and sew to pick-up rnd.

Side Borders

From RS with smaller, longer circular needle, join B at outer long edge of Left Side, pick up and k218 sts evenly spaced along long edge.

Work in K2, p2 Rib for 3 1/2 in. (9 cm).

Bind off.

With A, rep left side border along outer long edge of Right Side.

Weave in ends.

ABBREVIATIONS

beg = begin(ning)

dec = decreas(e)(s)(ing)

inc = increas(e)(s)(ing)

k = knit

p = purl

p2tog = purl 2 stitches together

rem = remain(ing)

rep = repeat

rnd(s) = round(s)

RS = right side

st(s) = stitch(es)

WS = wrong side

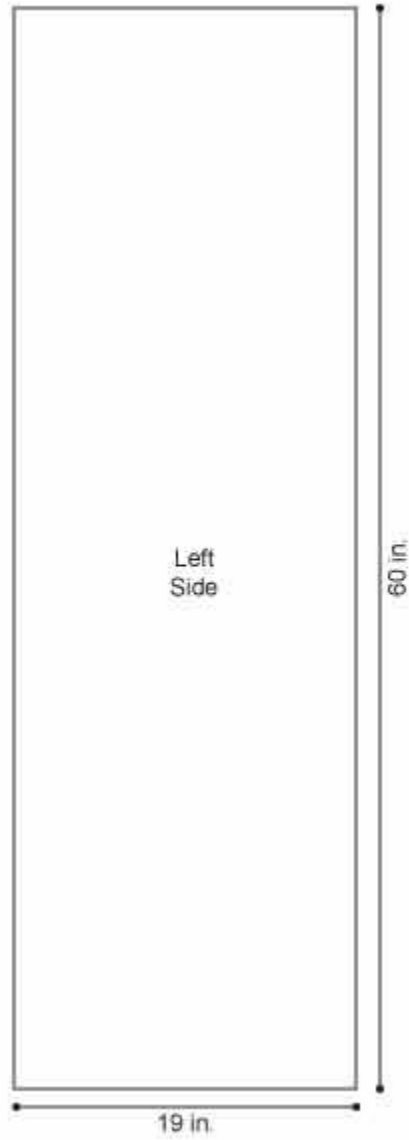
Every effort has been made to produce accurate and complete instructions. We cannot be responsible for variance of individual crafters, human error, or typographical mistakes.

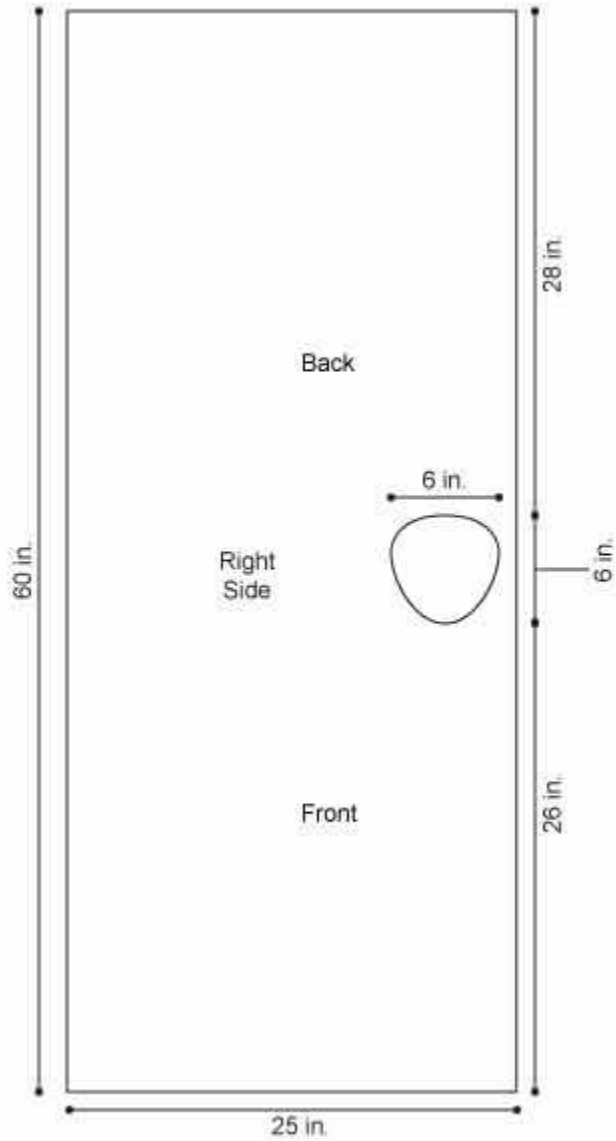
For thousands of free patterns, visit our website www.LionBrand.com

To order visit our website www.lionbrand.com or call: (800) 258-YARN (9276) any time!

Copyright ©1998-2018 Lion Brand Yarn Company, all rights reserved.

No pattern or other material may be reproduced -- mechanically, electronically, or by any other means, including photocopying - without written permission of Lion Brand Yarn Company.





For thousands of free patterns, visit our website www.LionBrand.com
To order visit our website www.lionbrand.com or call: (800) 258-YARN (9276) any time!
Copyright ©1998-2018 Lion Brand Yarn Company, all rights reserved.
No pattern or other material may be reproduced -- mechanically, electronically, or by any other means, including photocopying - without written permission of Lion Brand Yarn Company.

Stitch Key

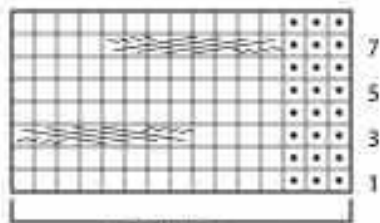
□ = K on RS, p on WS

◻ = P on RS, k on WS

 = 4/4 LC

 = 4/4 RC

Braided Cable



15 Stitch Repeat