



Free Knitting Pattern
Lion Brand®
LB Collection® Superwash Merino
Fair Isle Cowl
Pattern Number: L80399
Designed by Gretchen



SKILL LEVEL – Easy+

SIZE

Finished Circumference About 26 in. (66 cm)

Finished Height About 9 in. (23 cm)

MATERIALS

- Lion Brand® LB Collection® Superwash Merino (Art. #486)
 - 111 Midnight Blue 1 ball (A)
 - 098 Antique 1 ball (B)
- Lion Brand® stitch markers
- Lion Brand® large-eyed blunt needle



ADDITIONAL MATERIALS

2 circular knitting needles size 3 (3.25 mm), 16 in. (40.5 cm) long

Length of scrap yarn for provisional cast-on

GAUGE

28 sts = about 4 in. (10 cm) in chart pattern.

BE SURE TO CHECK YOUR GAUGE.

NOTES

1. The Cowl is worked in one piece in the round.
2. The ends of the piece are grafted together to make a double thick Cowl.
3. Cowl is worked in Fair Isle colorwork using 2 colors of yarn per rnd. Carry the color not in use across WS of work. At the end of every other rnd, twist working yarn around unused colors to secure strands. If carrying color across 5 or more sts, twist yarns on WS to prevent overly long strands (floats) on the WS.
4. Colorwork is worked following the chart. Read all rnds of chart from right to left.

COWL

With scrap yarn, cast on 144 sts.

Place marker for beg of rnd. Join by working the first st on the left hand needle with the working yarn from the right hand needle and being careful not to twist sts.

Change to A and knit 1 rnd.

Join B.

Diamond Chart

Work Rnds 1-19 of chart, then rep Rnds 8-19 of chart until piece measures about 24 in. (61 cm) from beg, end with a Rnd 19 as the last rnd you work.

Work Rnds 20-31 of chart, then cut B.

For thousands of free patterns, visit our website www.LionBrand.com

To order visit our website www.lionbrand.com or call: (800) 258-YARN (9276) any time!

Copyright ©1998-2019 Lion Brand Yarn Company, all rights reserved.

No pattern or other material may be reproduced -- mechanically, electronically, or by any other means, including photocopying - without written permission of Lion Brand Yarn Company.

With A, knit 1 rnd.

Cut A, leaving a 5-6 yd. (5-6 m) yarn tail for grafting.

Grafting

Carefully remove scrap yarn from cast-on edge and place released sts onto the second circular needle.

You'll have 2 needles - one with the sts of the cast-on edge and one with the sts of the last rnd.

Hold the 2 needles together, so that one needle is in front, one in back, with the RS of each end of the Cowl facing out.

Thread blunt needle with the ending yarn tail and

1. Insert the blunt needle as if to purl into first st on front needle, then as if to knit into first st on back needle. Pull yarn through, leaving sts on needles.
2. Insert blunt needle as if to knit into first st on front needle, let the st drop from needle.
3. Insert blunt needle as if to purl into 2nd st on front needle and pull the yarn through, leaving the st on the needle.
4. Insert blunt needle as if to purl into first st on back needle and let the st drop from the needle.
5. Insert blunt needle as if to knit into 2nd st on back needle and pull the yarn through, leaving the st on the needle.

Rep Steps 2-5 until all sts have been grafted.

When finished, adjust tension as necessary.

FINISHING

Blocking

Lay piece onto a flat surface.

Spray lightly with water and smooth into shape.

Allow to dry.

Weave in ends.

ABBREVIATIONS

beg = begin(ning)

rep = repeat

rnd(s) = round(s)

st(s) = stitch(es)

WS = wrong side

Every effort has been made to produce accurate and complete instructions. We cannot be responsible for variance of individual crafters, human error, or typographical mistakes.

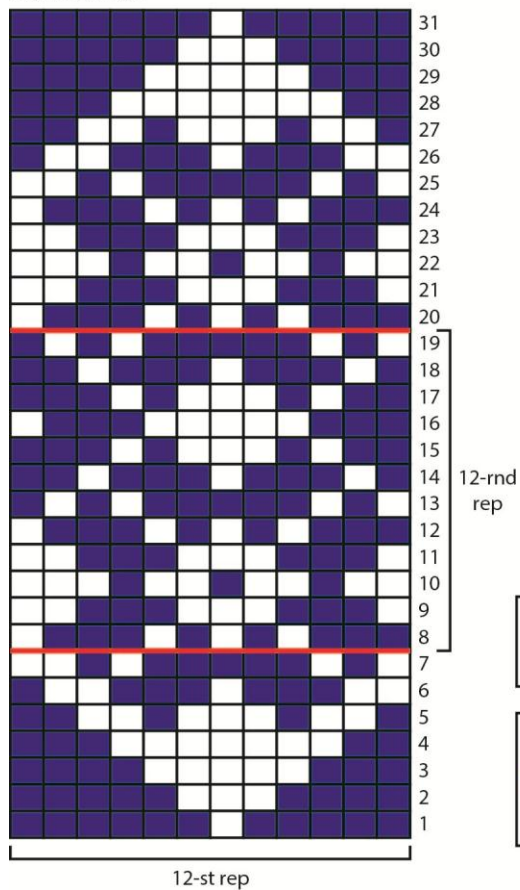
For thousands of free patterns, visit our website www.LionBrand.com

To order visit our website www.lionbrand.com or call: (800) 258-YARN (9276) any time!

Copyright ©1998-2019 Lion Brand Yarn Company, all rights reserved.

No pattern or other material may be reproduced -- mechanically, electronically, or by any other means, including photocopying - without written permission of Lion Brand Yarn Company.

Diamond Chart



SYMBOL KEY
 knit

COLOR KEY
 #111 Midnight Blue (A)
 #098 Antique (B)