



Free Crochet Pattern
Lion Brand®
LB Collection® Pure Wool
Minna Wrap
Pattern Number: L80376
Designed by Kathy Zimmerman



SKILL LEVEL – Experienced

SIZE **FINISHED SIZE**

About 16 x 60 in. (40.5 x 152.5 cm), after blocking and excluding fringe

MATERIALS

- Lion Brand® LB Collection® Pure Wool (Art. #489)
 - 098 Natural 7 skeins
- Lion Brand® crochet hook size G-6 (4 mm) for fringe
- Lion Brand® cable needle
- Lion Brand® stitch markers
- Lion Brand® large-eyed blunt needle



ADDITIONAL MATERIALS

Circular knitting needle size 8 (5 mm), 24 in. (61 cm) long

Circular knitting needle size 8 (5 mm), 32 in. (81.5 cm) long for I-cord edging

Double-pointed knitting needles size 8 (5 mm) for I-cord edging

GAUGE

18 sts + 26 rows = 4 in. (10 cm) in rev St st (p on RS, k on WS) with larger needle.

53 sts of central cable chart B = about 9 1/2 in. (24 cm)

20 sts twin rope cables charts A/C = about 3 1/4 in. (8.5 cm)

BE SURE TO CHECK YOUR GAUGE.

STITCH EXPLANATIONS

Bobble (worked on Rows 1-3 & 13-15 (in yellow on chart B))

Rows 1 & 13 (RS): K into front, back, front, back and front of indicated stitch to make 5 sts from 1 at designated bobble st on chart B.

Rows 2 & 14: P5 over bobble stitches.

Rows 3 & 15: K5, turn, p5, turn; slip 2, k3tog, pass 2 slipped sts over k3tog (1 st remains, decreased from 5).

3/3 RC (c3 over 3 right) Slip 3 sts to cable needle and hold in back, k3, then k3 from cable needle.

3/3 LC (c3 over 3 left) Slip 3 sts to cable needle and hold in front, k3, then k3 from cable needle.

3/1 LPC (c3 over 1 left p) Slip 3 sts to cable needle and hold in front, p1, k3 from cable needle.

3/1 RPC (c3 over 1 right p) Slip 1 st to cable needle and hold in back, k3, p1 from cable needle.

PATTERN STITCHES

Twin Ropes Cable A (worked over 20 sts, chart A)

Row 1 (RS): P1, k6, p3, k6, p4.

Row 2: K4, p6, k3, p6, k1.

For thousands of free patterns, visit our website www.LionBrand.com

To order visit our website www.lionbrand.com or call: (800) 258-YARN (9276) any time!

Copyright ©1998-2019 Lion Brand Yarn Company, all rights reserved.

No pattern or other material may be reproduced -- mechanically, electronically, or by any other means, including photocopying - without written permission of Lion Brand Yarn Company.

Row 3: P1, k6, p3, k6, p4.
Row 4: K4, p6, k3, p6, k1.
Row 5: P1, 3/3 RC, p3, 3/3 RC, p4.
Row 6: K4, p6, k3, p6, k1.
Row 7: P1, k6, p3, k6, p4.
Row 8: K4, p6, k3, p6, k1.
Rep Rows 1 – 8 for Twin Ropes Cable A.

Diamond With Bobble Cable (worked over 53 sts, chart B)

Row 1 (RS): *K3, p5, bobble, p5, k3, p1; rep from * once, end with k3, p5, bobble, p5, k3.
Row 2: P3, k5, bobble, k5, p3; *k1, p3, k5, bobble, k5, p3; rep from * once.
Row 3: *3/1 LPC, p4, complete bobble, p4, 3/1 RPC, p1; rep from * once, end 3/1 LPC, p4, complete bobble, p4, 3/1 RPC.
Row 4: K1, p3, k9, p3, k1; *k2, p3, k9, p3, k1; rep from * once.
Row 5: *P1, 3/1 LPC, p7, 3/1 RPC, p2; rep from * once, end p1, 3/1 LPC, p7, 3/1 RPC, p1.
Row 6: K2, p3, k7, p3, k2; *k3, p3, k7, p3, k2; rep from * once.
Row 7: *P2, 3/1 LPC, p5, 3/1 RPC, p3; rep from * once; end p2, 3/1 LPC, p5, 3/1 RPC, p2.
Row 8: K3, p3, k5, p3, k3; *k4, p3, k5, p3, k3; rep from * once.
Row 9: *P3, 3/1 LPC, p3, 3/1 RPC, p4; rep from * once, end p3, 3/1 LPC, p3, 3/1 RPC, p3.
Row 10: K4, p3, k3, p3, k4; *k5, p3, k3, p3, k4; rep from * once.
Row 11: *P4, 3/1 LPC, p1, 3/1 RPC, p5; rep from * once; end with p4, 3/1 LPC, p1, 3/1 RPC, p4.
Row 12: K5, p3, k1, p3, k5; *k6, p3, k1, p3, k5; rep from * once.
Row 13: *P5, k3, p1, k3, p5, bobble; rep from * once; end with p5, k3, p1, k3, p5.
Row 14: K5, p3, k1, p3, k5; *bobble, k5, p3, k1, p3, k5; rep from * once.
Row 15: *P4, 3/1 RPC, p1, 3/1 LPC, p4, complete bobble; rep from * once, end with p4, 3/1 RPC, p1, 3/1 LPC, p4.
Row 16: K4, p3, k3, p3, k4; *k5, p3, k3, p3, k4; rep from * once.
Row 17: *P3, 3/1 RPC, p3, 3/1 LPC, p4; rep from * once, end with p3, 3/1 RPC, p3, 3/1 LPC, p3.
Row 18: K3, p3, k5, p3, k3; *k4, p3, k5, p3, k3; rep from * once.
Row 19: *P2, 3/1 RPC, p5, 3/1 LPC, p3; rep from * once, end with p2, 3/1 RPC, p5, 3/1 LPC, p2.
Row 20: K2, p3, k7, p3, k2; *k3, p3, k7, p3, k2; rep from * once.
Row 21: *P1, 3/1 RPC, p 7, 3/1 LPC, p2; repeat from * once, end with p1, 3/1 RPC, p7, 3/1 LPC, p1.
Row 22: K1, p3, k9, p3, k1; *k2, p3, k9, p3, k1; rep from * once.
Row 23: *3/1 RPC, p9, 3/1 LPC, p1; rep from * once; end with 3/1 RPC, p9, 3/1 LPC.
Row 24: P3, k11, p3; *k1, p3, k11, p3, rep from * once.
Rep Rows 1 – 24 for Diamond With Bobble Cable.

Twin Ropes Cable C (worked over 20 sts, chart C)

Row 1 (RS): P4, k6, p3, k6, p1.

Row 2: K1, p6, k3, p6, k4.

Row 3: P4, k6, p3, k6, p1.

Row 4: K1, p6, k3, p6, k4.

Row 5: P4, 3/3 LC, p3, 3/3 LC, p1.

Row 6: K1, p6, k3, p6, k4.

Row 7: P4, k6, p3, k6, p1.

Row 8: K1, p6, k3, p6, k4.

Rep Rows 1 – 8 for Twin Ropes Cables C.

NOTES

1. Wrap is worked in three pieces, back and forth in rows: a central panel with two side panels and seamed along the central panel.
2. An applied I-cord edges the neck edge. Fringe is knotted along the cast-on edges of the side panels and central panel.
3. A circular needle is used to accommodate the large number of stitches. Work back and forth in rows on the circular needle as if working on straight needles.
4. Stitch markers are used to separate the cable patterns. Count the sts between markers frequently to ensure that you maintain the correct number of sts for each cable pattern. Slip markers every row.
5. The cable patterns can be worked from written instructions or by following the charts. When working from charts, read RS rows from right to left and WS rows from left to right.

WRAP

Central panel (center back)

With shorter circular needle and long tail method, cast on 95 sts. Knit 5 rows, end with a WS row as the last row you work.

Row 1 (RS): K1 (for edge st); work chart A across 20 sts, place marker, work chart B across next 53 sts, place marker, work chart C across 20 sts to last st, k1 (for edge st).

Keeping 1 st at each end in Garter st (knit every st on every row), work pattern as established until 108 rows completed [this is 4 1/2 repeats of chart B, piece should measure about 16 in. (40.5 cm) from beg].

Bind off all sts in pattern.

Right side panel

With shorter circular needle and long tail method, cast on 97 sts. Knit 5 rows, end with a WS row as the last row you work.

Row 1 (RS): K1 (neck edge); work chart A across 20 sts, place marker, work chart B across next 53 sts, place marker, work chart C across 20 sts to last 3 sts, k3 (Garter border, side edge).

For thousands of free patterns, visit our website www.LionBrand.com

To order visit our website www.lionbrand.com or call: (800) 258-YARN (9276) any time!

Copyright ©1998-2019 Lion Brand Yarn Company, all rights reserved.

No pattern or other material may be reproduced -- mechanically, electronically, or by any other means, including photocopying - without written permission of Lion Brand Yarn Company.

Keeping 1 st at neck edge and 3 sts at side edge in Garter st, work pattern as established until 144 rows completed [this is 6 full repeats of chart B, piece should measure about 21 in. (53.5 cm) from beg].

Knit 5 rows,
Bind off all sts.

Left side panel

With shorter circular needle and long tail method, cast on 97 sts. Knit 5 rows, end with a WS row as the last row you work.

Row 1 (RS): K3 (Garter border, side edge); work chart A across 20 sts, place marker, work chart B over next 53 sts, place marker, work chart C across 20 sts to last st, k1 (neck edge).

Keeping 3 sts at side edge and 1 st at neck edge in Garter st, work pattern as established until 144 rows completed [this is 6 full repeats of chart B, piece should measure about 21 in. (53.5 cm) from beg].

Knit 5 rows.
Bind off all sts.

FINISHING

Lay pieces onto a flat surface.
Spray with water, then smooth pieces into place.
Allow to dry.

Sew right and left side panels to sides of center panel.
Weave in ends.

Neck edge

From RS with longer circular needle, pick up and knit 102 sts evenly spaced along right panel, 94 sts across center panel, 102 sts along left panel, break yarn -- 298 sts.

With double pointed needle, cast on 3 sts and transfer these sts to the right end of the longer circular needle.

Work 3-stitch I-cord as follows: *K2, k2tog through the back loop, slide sts to right end of circular needle and repeat from * until 3 sts remain.

K3tog and fasten off.

Cut yarn, leaving a long yarn tail. Weave tail into I-cord to conceal the end.

Fringe

Cut 276 strands of yarn 25 in. (63.5 cm) long for outside edge and 24 strands 27 in. (68.5 cm) long for corners.

Along 3 outside edges: *Fold 3 strands in half, with crochet hook draw folded end through Garter border. Pull strands through. Repeat from * about every 1 in. (2.5 cm), except in corners.

In corners, use twelve 27 in. (68.5 cm) strands.

After all fringes are attached, divide each group of 6 strands into 2 groups of 3 strands. Knot 3 strands from one group together with 3 strands from adjoining fringe, about 2 1/2 in. (6.5 cm) from edge of Wrap.

Repeat the process once more, knotting about 5 in. (12.5 cm) from edge of Wrap.

Trim fringe ends evenly.

Weave in ends.

ABBREVIATIONS

k = knit

k2tog = knit 2 stitches together

k3tog = knit 3 stitches together

p = purl

rep = repeat

RS = right side

rev St st = reverse Stockinette stitch

st(s) = stitch(es)

St st = Stockinette stitch

WS = wrong side

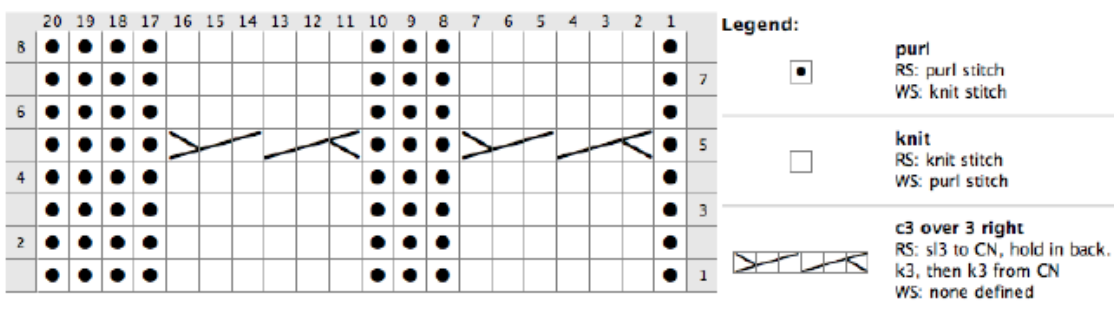
Every effort has been made to produce accurate and complete instructions. We cannot be responsible for variance of individual crafters, human error, or typographical mistakes.

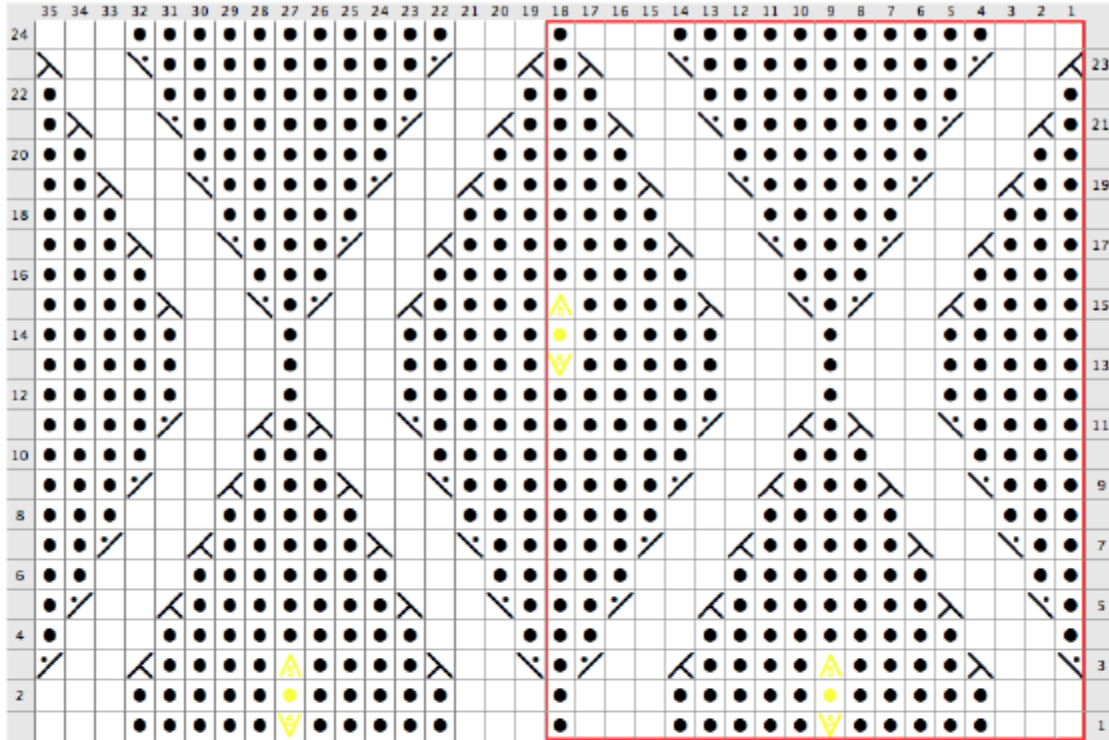
For thousands of free patterns, visit our website www.LionBrand.com

To order visit our website www.lionbrand.com or call: (800) 258-YARN (9276) any time!


Copyright ©1998-2019 Lion Brand Yarn Company, all rights reserved.


No pattern or other material may be reproduced -- mechanically, electronically, or by any other means, including photocopying - without written permission of Lion Brand Yarn Company.








Legend:


- 
knit
 RS: knit stitch
 WS: purl stitch


- 
purl
 RS: purl stitch
 WS: knit stitch

- 
Bobble5
 RS: knit into front,back,front, back, and front of stitch
 WS:

- 
Purl5 Bobble stitches
 RS:
 WS: Purl 5 bobble stitches

- 
c3 over 1 left P
 RS: sl3 to CN, hold in front. p1, k3 from CN
 WS: sl3 to CN, hold in front. p1, k3 from CN

- 
Finish Bobble
 RS: knit 5 bobble stitches, turn purl 5 bobble stitches, turn, sl 2 sts purlwise. k3tog, pass 2 slip dt over
 WS:

- 
c3 over 1 right P
 RS: sl1 to CN, hold in back. k3, p1 from CN
 WS: sl1 to CN, hold in back. k3, p1 from CN

