



*Free Knitting Pattern*

**LION BRAND® FISHERMEN'S WOOL®**  
**TREE OF LIFE JACKET**

Pattern Number: L80318

*Designed by Nicky Epstein*



## SKILL LEVEL – EXPERIENCED

### SIZE

ONE SIZE

**Finished Bust** 62 in. (157.5 cm)

**Finished Length** 35 in. (89 cm)



### MATERIALS

- Lion Brand® Fishermen's Wool® (Art. #150)  
123 Oatmeal 9 skeins
- Lion Brand® knitting needles size 7 (4.5 mm)
- Lion Brand® double-pointed knitting needles size 6 (4 mm)
- Lion Brand® stitch markers
- Lion Brand® cable needle
- Lion Brand® large-eyed blunt needle

### ADDITIONAL MATERIALS

Circular knitting needle size 10.5 (6.5 mm), 36 in. (91.5 cm) long 2 large snaps

Sewing needle and thread

### GAUGE

16 sts = about 4 in. (10 cm) over Twin Trees chart with larger needle and 2 strands of yarn held together.  
BE SURE TO CHECK YOUR GAUGE.

### STITCH EXPLANATIONS

**1/1 PLC (1 over 1 purl left cross)** Slip 1 st to cable needle and hold in front, p1, then k1 from cable needle.

**1/1 PRC (1 over 1 purl right cross)** Slip 1 st to cable needle and hold in back, k1, then p1 from cable needle.

**2/1 PLC (2 over 1 purl left cross)** Slip 2 sts to cable needle and hold in front, p1, then k2 from cable needle.

**2/1 PRC (2 over 1 purl 1 cross)** Slip 1 st to cable needle and hold in back, k2, then p1 from cable needle.

**2/2 LC (2 over 2 left cross)** Slip 2 sts to cable needle and hold in front, k2, then k2 from cable needle.

**2/2 RC (2 over 2 right cross)** Slip 2 sts to cable needle and hold in back, k2, then k2 from cable needle.

**2/2 PLC (2 over 2 purl left cross)** Slip 2 sts to cable needle and hold in front, p2, then k2 from cable needle.

**2/2 PRC (2 over 2 purl right cross)** Slip 2 sts to cable needle and hold in back, k2, then p2 from cable needle.

**M1 (make 1)** An increase worked by lifting the horizontal strand lying between needles and placing it onto the left hand needle. Knit this new stitch through the back loop – 1 st increased.

**sk2p** Slip 1 as if to knit, knit 2 together, pass slipped stitch over – 2 sts decreased.

**ssk (slip, slip, knit)** Slip next 2 sts as if to knit, one at a time, to right hand needle; insert left hand needle into fronts of these 2 sts and knit them tog – 1 st decreased.

### **Yo (yarn over)**

An increase that also creates a small decorative hole (eyelet) in the fabric, worked as follows:

1. Bring yarn to front, between the needles.
2. Take yarn to back, over the right hand needle. This creates the new st. You are now ready to proceed with the next st as instructed.

## **PATTERN STITCHES**

### **Dividing Pattern**

**Row 1 (RS):** Knit.

**Row 2:** Purl.

**Row 3:** Knit.

**Row 4:** Purl.

**Rows 5–10:** Purl.

**Rows 11–14:** Rep Rows 1-4.

## **NOTES**

1. Jacket is worked in 6 pieces: Back, Left Front, Right Front, Collar, and 2 Pocket Linings.
2. All pieces except the Pocket Linings are worked with 2 strands of yarn held together.
3. The sleeves and front bands are worked from sts picked up on Jacket.
4. A circular needle is used to accommodate the large number of sts. Work back and forth in rows on the circular needle, just as if working on straight needles.
5. The stitch patterns are worked from charts. When working from charts, read RS rows from right to left and WS rows from left to right.
6. Decorative frog and button are made with knitted cord.

### Note:

The following corrections have been incorporated into the pattern below. We are highlighting the corrections separately here so that if you have printed out an earlier version of the pattern you'll know what was changed.

CORRECTIONS (applied May 25<sup>th</sup>, 2023)

#### Begin Twin Trees chart

**Row 1 (RSWS):** PK12, place marker (pm), work Row 1 of Twin Trees chart across next 40 sts, pm, **p**k20, work Row 1 of Twin Trees chart across next 40 sts, pm, **p**k12.

...

Remove markers.

**Knit 1 row.**

Work Rows 1-14 of Dividing Pattern.

...

#### Finishing

...

#### Sleeves

...

Bind off in rib.

**Sew Sleeve seams.**

COLLAR

## BACK

With circular needle and 2 strands of yarn held together, cast on 124 sts. Work in Garter st (knit every st on every row) for 2 in. (5 cm).

### Begin Twin Trees chart

**Row 1 (WS):** K12, place marker (pm), work Row 1 of Twin Trees chart across next 40 sts, pm, k20, pm, work Row 1 of Twin Trees chart across next 40 sts, pm, k12.

Continue as established, working chart pattern as set, sts outside of charts in rev St st (p on RS, k on WS), and slipping markers as you come to them until chart Row 50 is complete.

Remove markers.

Knit 1 row.

Work Rows 1-14 of Dividing Pattern.

### Begin Flower Garden chart

**Row 1 (RS):** P4, pm, work Row 1 of Flower Garden chart to last 3 sts, pm, p3.

Continue as established, working chart pattern as set, sts outside of markers in rev St st, and slipping markers as you come to them until chart Row 36 is complete.

Remove markers.

Work Rows 1-14 of Dividing Pattern.

Place markers on each end of Row 14 of Dividing Pattern for sleeve placement.

For thousands of free patterns, visit our website [www.LionBrand.com](http://www.LionBrand.com)

To order visit our website [www.lionbrand.com](http://www.lionbrand.com) or call: (800) 258-YARN (9276) any time!

Copyright ©1998-2023 Lion Brand Yarn Company, all rights reserved. No pattern or other material may be reproduced -- mechanically, electronically, or by any other means, including photocopying - without written permission of Lion Brand Yarn Company.

### ***Begin Twin Trees chart***

**Row 1 (RS):** P17, pm, work Row 1 of Twin Trees chart across next 40 sts, pm, p10, pm, work Row 1 of Twin Trees chart across next 40 sts, pm, p to end of row.

Continue as established, working chart pattern as set, sts outside of charts in rev St st (p on RS, k on WS), and slipping markers as you come to them until chart Row 50 is complete.

Remove markers.

Purl one row.

Knit one row.

Bind off.

## **LEFT FRONT**

With circular needle and 2 strands of yarn held together, cast on 62 sts. Work in Garter st for 2 in. (5 cm).

### ***Begin Twin Trees chart***

**Row 1 (RS):** P11, pm, work Row 1 of Twin Trees chart across next 40 sts, pm, p to end of row.

Continue as established, working chart pattern as set, sts outside of charts in rev St st (p on RS, k on WS), and slipping markers as you come to them until chart Row 50 is complete.

Remove markers.

Work Rows 1-14 of Dividing Pattern

### ***Begin Garden Flower chart***

**Row 1 (RS):** P8, pm, work Row 1 of Flower Garden chart to last 9 sts, pm, p9.

Continue as established, working chart pattern as set, sts outside of markers in rev St st, and slipping markers as you come to them until chart row 36 is complete.

Remove markers.

Work Rows 1–14 of Dividing Pattern.

Place marker at end of Row 14 for sleeve placement.

### ***Begin Twin Trees chart***

**Row 1 (RS):** P11, pm, work Row 1 of Twin Trees chart across next 40 sts, pm, p to end.

Continue as established, working chart pattern as set, sts outside of charts in rev St st, and slipping markers as you come to them until chart Row 50 is complete.

Remove markers.

Purl one row.

Knit one row.

Bind off.

## RIGHT FRONT

Cast on and work same as Left Front, but place sleeve placement marker at beginning of Row 14 of Dividing Pattern.

## FINISHING

### *Front bands*

**Note** The center front of the Left and Right Fronts is the side opposite the sleeve placement markers.

From RS, with circular needle and 2 strands of yarn held together, pick up and k 140 sts evenly spaced along center front edge of Left Front.

Knit 6 rows.

Bind off.

Rep on Right Front.

Place markers to mark center 6 in. (15 cm) on top edge of Back for Back neck. Sew shoulder seams, leaving back neck open.

### *Sleeves*

From RS with circular needle and 2 strands of yarn held together, pick up and knit 84 sts evenly spaced between sleeve placement markers.

Knit 5 rows.

**Row 1 (RS):** \*K2, p2; rep from \* to end of row.

**Row 2:** K the knit sts and p the purl sts.

Rep Row 2 for 3 in. (7.5 cm), end with a WS row as the last row you work.

**Next Row (Decrease) (RS):** \*K2tog, p2tog; rep from \* to end of row – you'll have 42 sts.

**Next row:** K the knit sts and p the purl sts.

Rep last row until sleeve measures about 9 3/4 in. (25 cm) or desired length.

Bind off in rib.

Sew Sleeve seams.

## COLLAR

With circular needle and 2 strands of yarn held together, cast on 92 sts.

Work in Garter st for 2 in. (5 cm).

**Row 1 (WS):** K16, p4, k8, p4, k28, p4, k8, p4, k16.

**Row 2:** K the knit sts and p the purl sts.

Rep Row 2 until piece measures about 4 in. (10 cm) cm from beg.

Bind off.

Match center of collar to center of back neck.

Sew bound-off edge of Collar to back neck and along center edges of fronts, ending at the top of Dividing Pattern.

### ***Pocket Linings (make 2)***

With straight needles and 1 strand of yarn, cast on 35 sts.

Work in St st (k on RS, p on WS) for about 13 in. (33 cm).

Bind off.

Fold in half (bringing cast on edge to meet bound off edge) with RS together. Sew sides.

Place markers on side edges of Back and Fronts, about 10 and 16 in. (25.5 and 40.5 cm) above lower edge.

Sew side seams, leaving sides between the markers open.

On each side, sew the open top edge of the pocket lining to Front and to Back between markers.

### **FROGS (make 2)**

With 2 double-pointed needles and 1 strand of yarn, cast on 4 sts.

Make cord as follows:

Knit the 4 sts. Do not turn work. \*Slide sts to other end of needle and knit them, pulling yarn tightly across the back of the work, (do not turn work); rep from \* until cord measures about 28 in. (71 cm) long.

Bind off.

Rep to make a second cord.

Following diagram, shape each cord into a frog, then sew together with sewing needle and thread.

### **BUTTONS (make 2)**

Make 2 cords as for Frogs, but 7 in. (18 cm) long.

Knot cord to make a button.

With sewing needle and thread, sew frogs and buttons to RS of center Fronts at Dividing Patterns.

With sewing needle and thread, sew snaps beneath frogs and buttons.

Weave in ends.

## **ABBREVIATIONS**

**beg** = begin(ning)

**dec** = decreas(e)(s)(ing)

**inc** = increas(e)(s)(ing)

**k** = knit

**k2tog** = knit 2 stitches together

**k2togb** = knit 2 stitches together through the back loop

**k3togb** = knit 3 stitches together through the back loop

**p** = purl

**p2tog** = purl 2 stitches together

**p3tog** = purl 3 stitches together

**rem** = remain(ing)

**rep** = repeat

**rev St st** = reverse Stockinette stitch

**RS** = right side

**sl** = slip

**st(s)** = stitch(es)

**St st** = Stockinette stitch

**tog** = together

**WS** = wrong side

*Every effort has been made to produce accurate and complete instructions. We cannot be responsible for variance of individual knitters or crocheters, human error, or typographical mistakes.*

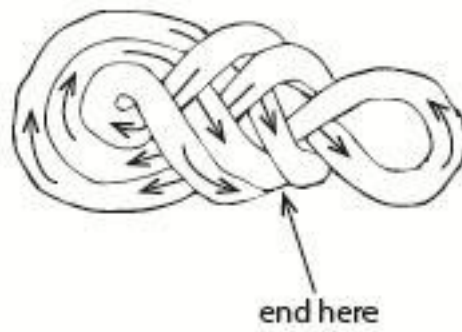
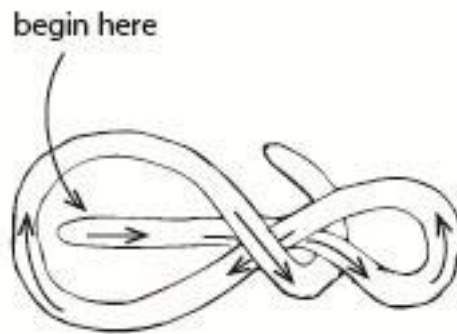
*©2023 Lion Brand Yarn Company, all rights reserved.*

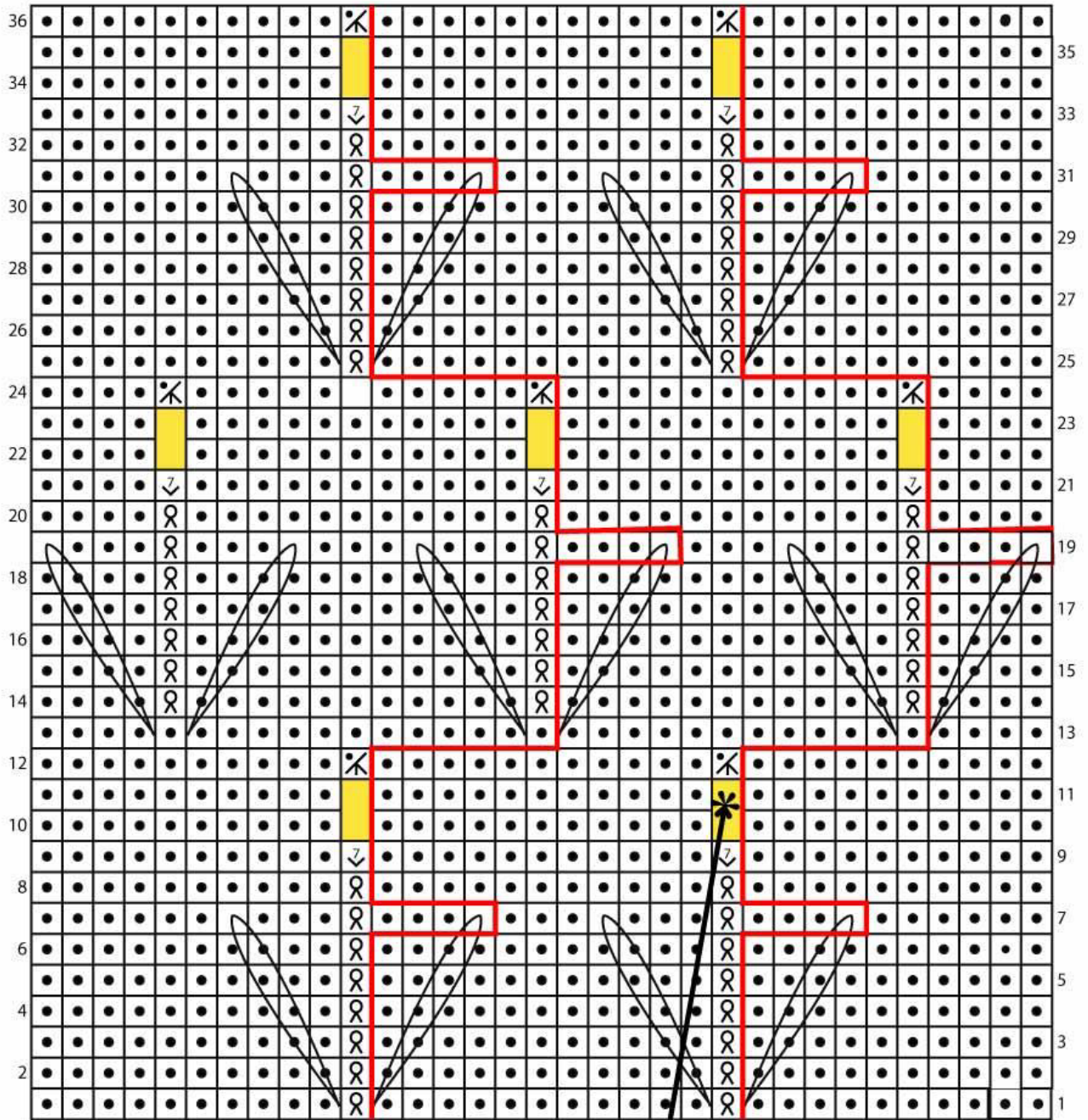
For thousands of free patterns, visit our website [www.LionBrand.com](http://www.LionBrand.com)

To order visit our website [www.lionbrand.com](http://www.lionbrand.com) or call: (800) 258-YARN (9276) any time!

Copyright ©1998-2023 Lion Brand Yarn Company, all rights reserved. No pattern or other material may be reproduced -- mechanically, electronically, or by any other means, including photocopying - without written permission of Lion Brand Yarn Company.

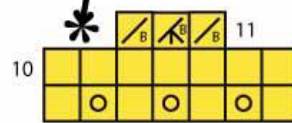






12 st repeat

Insert here



Insert Chart

9 As Row 9 appears after it has been worked

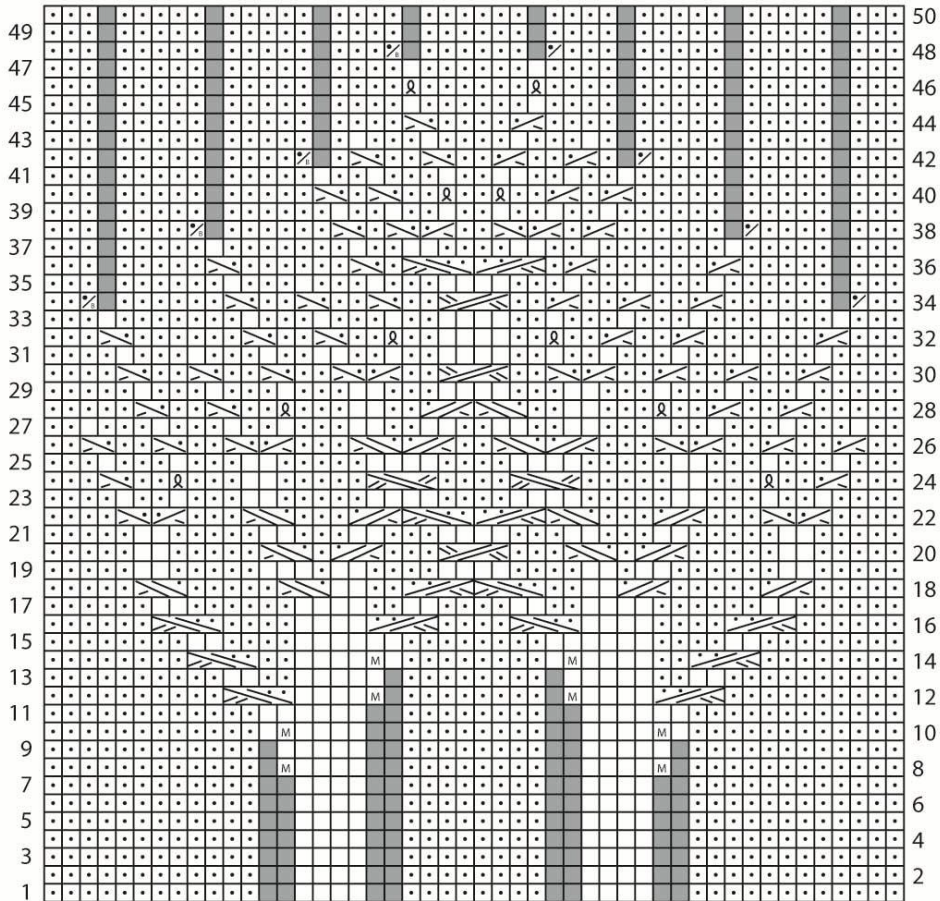
For thousands of free patterns, visit our website [www.LionBrand.com](http://www.LionBrand.com)

To order visit our website [www.lionbrand.com](http://www.lionbrand.com) or call: (800) 258-YARN (9276) any time!

Copyright ©1998-2023 Lion Brand Yarn Company, all rights reserved. No pattern or other material may be reproduced -- mechanically, electronically, or by any other means, including photocopying - without written permission of Lion Brand Yarn Company.

L80318

Twin Trees Chart



- |  |                           |
|--|---------------------------|
| □ k on RS, p on WS   | ◻ p on RS, k on WS        |
| ▧ p2tog  | ▩ p2togb                  |
| Ⓜ make 1 stitch  | Ⓚ k through the back loop |
| ■ no stitch  |                           |
| ⊠ 1/1 PRC: Slip next st onto cable needle and hold in back, k1, p1 from cable needle     |                           |
| ⊡ 1/1 PLC: Slip next st onto cable needle and hold in front, p1, k1 from cable needle    |                           |
| ⊢ 2/1 PRC: Slip next st onto cable needle and hold in back, k2, p1 from cable needle     |                           |
| ⊣ 2/1 PLC: Slip next 2 sts onto cable needle and hold in front, p1, k2 from cable needle |                           |
| ⊤ 2/2 RC: Slip next 2 sts onto cable needle and hold in back, k2, k2 from cable needle   |                           |
| ⊥ 2/2 LC: Slip next 2 sts onto cable needle and hold in front, k2, k2 from cable needle  |                           |
| ⊦ 2/2 PRC: Slip next 2 sts onto cable needle and hold in back, k2, p2 from cable needle  |                           |
| ⊧ 2/2 PLC: Slip next 2 sts onto cable needle and hold in front, p2, k2 from cable needle |                           |


For thousands of free patterns, visit our website [www.LionBrand.com](http://www.LionBrand.com)

To order visit our website [www.lionbrand.com](http://www.lionbrand.com) or call: (800) 258-YARN (9276) any time!

Copyright ©1998-2023 Lion Brand Yarn Company, all rights reserved. No pattern or other material may be reproduced -- mechanically, electronically, or by any other means, including photocopying - without written permission of Lion Brand Yarn Company.

 k on RS, p on WS


 p on RS, k on WS

 yarn over

 k tbl on RS, p tbl on WS

 inc 1 in st

 make 7 sts from one by working  
((k1, yo) 3 times, k1) all in same st  
(see Insert Chart for detail)

 insert a crochet hook (or point of right needle)  
from front through the fabric at indicated side  
of the twisted knit st in indicated row, catch yarn  
and draw up a long, loose loop; sl this loop onto  
right needle, knit next st and pass the loop over st

 k2togb

 k3togb

 p3tog

 dec 1 st