



Free Crochet Pattern
LION BRAND®
WOOL-EASE® CAKES
SUNNYVALE SCARF
Pattern Number: L80391



SKILL LEVEL – EASY

SIZE

About 7 x 70 in. (18 x 178 cm)

MATERIALS

- LION BRAND® WOOL-EASE® CAKES (Art. #621)
#201 Hades 1 cake
- LION BRAND® crochet hook size I-9 (5.5 mm)
- LION BRAND® large-eyed blunt needle

GAUGE

5 (sc, 2 dc) groups = about 4 in. (10 cm).
BE SURE TO CHECK YOUR GAUGE.



NOTES

1. Scarf is worked in one piece in rows of (sc, 2 dc) groups.
2. For those who find a visual helpful, we've included a stitch diagram.

SCARF

Ch 30.

Row 1 (RS): Work 2 dc in 3rd ch from hook (2 skipped ch count as beg ch), *sk next 2 ch, (sc, 2 dc) in next ch; rep from * 7 more times, sk next 2 ch, sc in last ch – you will have 27 sts in this row, consisting of 8 (sc, 2 dc) groups, 2 dc at beg of row and 1 sc at end of row. **Note:** 2 dc at beg and 1 sc at end count as 1 more (sc, 2 dc) group.

Row 2: Ch 2 (counts as beg ch), turn, 2 dc in first sc, *sk next 2 dc, (sc, 2 dc) in next sc; rep from * 7 more times, sk last 2 dc, sc in top of beg ch.
Rep Row 2 until almost all yarn has been used.

Fasten off.

FINISHING

Weave in ends.

ABBREVIATIONS

beg = begin(ning)

ch = chain

dc = double crochet

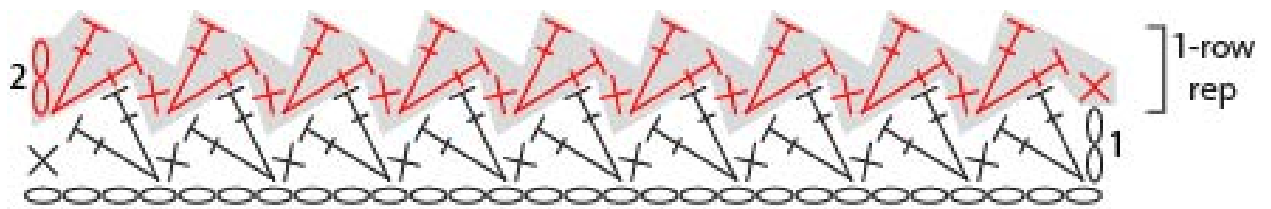
rep = repeat

RS = right side

sc = single crochet

sk = skip
st(s) = stitch(es)

Every effort has been made to produce accurate and complete instructions. We cannot be responsible for variance of individual crafters, human error, or typographical mistakes.



KEY	
○	= chain (ch)
×	= single crochet (sc)
⊥	= double crochet (dc)