



Free Crochet Pattern
Lion Brand® Touch of Cashmere
Snow Leopard Hat
Pattern Number: M20037



SKILL LEVEL – Easy

SIZES

Finished Circumference About 22 in. (56 cm), will stretch to fit a range of sizes
Finished Height About 8 1/4 in. (21 cm)

MATERIALS

- Lion Brand® Touch Of Cashmere (Art. #678)
 - #099 Winter White 1 ball (A)
 - #152 Iron 1 ball (B)
 - #123 Portobello 1 ball (C)
- Lion Brand® crochet hook size H-8 (5 mm)
- Lion Brand® stitch markers
- Lion Brand® Pom-Pom Maker
- Lion Brand® large-eyed blunt needle



GAUGE

16 WC (Waistcoat Stitches) = about 5 in. (12.5 cm).
BE SURE TO CHECK YOUR GAUGE.

STITCH EXPLANATIONS

sc-blo (single crochet in back loop only) Insert hook in back loop only of indicated st and draw up a loop, yarn over and draw through 2 loops on hook.

WC (Waistcoat Stitch) Insert hook between the "legs" of the next st, yarn over and draw up a loop, yarn over and draw through both loops on hook.

Note: A waistcoat stitch is worked like a single crochet EXCEPT that the hook is inserted between the two leaning vertical strands that form a "V" on the front of the st, instead of under the top 2 loops.

NOTES

1. Hat is worked in two sections: Brim and Body.
2. Brim is worked first in rows of single crochet. Short edges of Brim are joined together to form a ring. Sts are worked along one edge of Brim to beg Body of Hat. Body is worked in continuous rnds (spiral) of Waistcoat Stitch (WC) changing yarn color following Chart.
3. Each square of Chart represents one Waistcoat Stitch (WC). Read each rnd of Chart from right to left.
4. To change yarn color, work last st of old color to last yarn over. Yarn over with new color and draw through all loops on hook to complete st. Do not fasten off old color. Carry color not in use under the sts of the current color.

HAT **BRIM**

With A, ch 16.

Row 1 (RS): Sc in 2nd ch from hook and each ch across – you will have 15 sc in this row.

Rows 2-70: Ch 1, turn, sc in first st, sc-blo in next 13 sts, sc in last st.

Fold piece in half, bringing RS together and matching sts of Row 70 with chains at base of sts of Row 1.

Row 71 (Joining Row): Working through both thicknesses, sl st in each st across. Turn brim RS out.

BODY

Draw up a loop of A in one end of Joining Row. Do not cut A.

Rnd 1: Ch 1, work 70 sc evenly spaced along edge; do not join, work in continuous rnds (spiral) – 70 sc.

Place marker in last st made to indicate end of rnd. Move marker up as each rnd is completed.

CHARTED LEOPARD PRINT CHART

Beg with Rnd 1 of Chart, work rnds and change yarn color following Chart until all 18 rnds of Chart have been completed.

Next Rnd: With A, WC in each st around.

Rep last rnd until Hat measures about 9 in. (23 cm) high.

Slip st in first st of last rnd just completed. Remove end of rnd marker.

Fasten off, leaving a long tail. Thread tail through top of sts of last rnd. Pull tail to close opening at top of Hat. Knot securely.

FINISHING

With B and C held together and following package directions, make a pom-pom. Tie pom-pom to top of Hat.

Weave in ends.

ABBREVIATIONS

beg = begin(ning)(s)

ch = chain

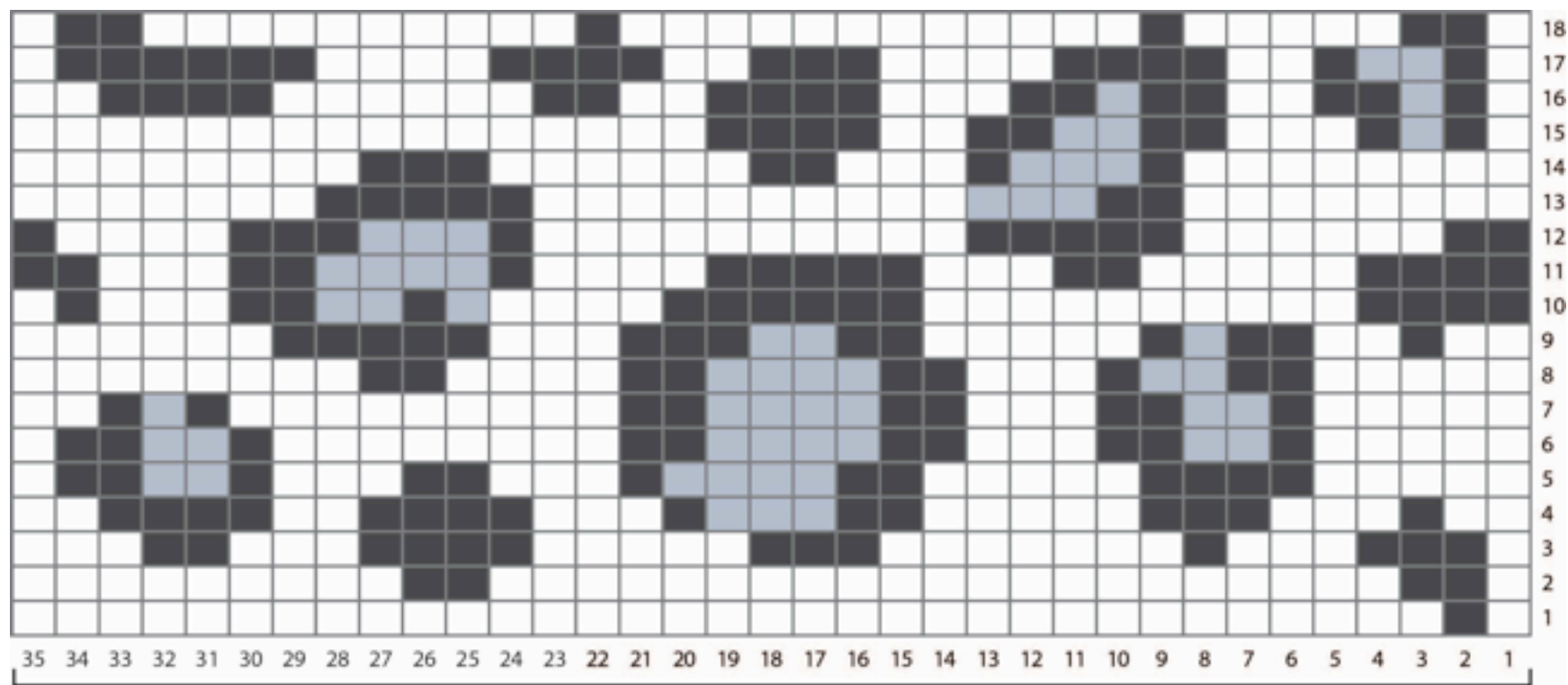
rnd(s) = round(s)

RS = right side

sc = single crochet

st(s) = stitch(es)

Every effort has been made to produce accurate and complete instructions. We cannot be responsible for variance of individual crafters, human error, or typographical mistakes.



work 2 times
 (for a total of 70 sts in each rnd)

COLOR KEY	
	#099 Winter White (A)
	#152 Iron (B)
	#123 Portobello (C)

For thousands of free patterns, visit our website www.LionBrand.com
 To order visit our website www.lionbrand.com or call: (800) 258-YARN (9276) any time!
 Copyright ©1998-2020 Lion Brand Yarn Company, all rights reserved.

No pattern or other material may be reproduced -- mechanically, electronically, or by any other means, including photocopying - without written permission of Lion Brand Yarn Company.