



Free Crochet Pattern
Lion Brand® Basic Stitch Anti-Pilling™
Zebra Pillow
Pattern Number: M20039



SKILL LEVEL – Easy

SIZES

About 12 x 12 in. (30.5 x 30.5 cm)

MATERIALS

- Lion Brand® Basic Stitch Anti-Pilling™ (Art. #202)
 - #105 Frost 1 ball (A)
 - #100 White 1 ball (B)
 - #142 Prism 1 ball (C)
- Lion Brand® crochet hook size H-8 (5 mm)
- Lion Brand® large-eyed blunt needle



ADDITIONAL MATERIALS

3 in. (7.5 cm) piece of cardboard
12 x 12 in. (30.5 x 30.5 cm) pillow form

GAUGE

12 sc = about 4 in. (10 cm) over chart pattern.
BE SURE TO CHECK YOUR GAUGE.

NOTES

1. Pillow is worked in 2 pieces: Front and Back.
2. Front is worked in single crochet, changing yarn color following Chart.
3. Back is worked in single crochet using a single color.
4. Front and Back are slip stitched together and pillow form is inserted before stitching the 4th side to complete Pillow.
5. To change yarn color, work last st of old color to last yarn over. Yarn over with new color and draw through all loops on hook to complete the st. Work over the strand of the old color as you work each row.
6. When working from chart, read odd-numbered rows from right to left and even-numbered rows from left to right.

FRONT

With A, ch 37.

Row 1 (RS): Sc in 2nd ch from hook and in each ch across – you'll have 36 sc in this row.

Beg with Row 2 of Chart, work in single crochet (sc) and change yarn color following Chart, until all 52 rows of Chart have been completed.

Do not fasten off.

TRIM

Rnd 1: Continuing with A, ch 1, do not turn, work 52 sc evenly spaced along side edge; working along opposite side of foundation ch, work 3 sc in ch at base of first sc of Row 1, sc in each ch across to ch at base of last sc, 3 sc in last ch; work 52

sc evenly spaced along next side edge, work 3 sc in first sc of Row 52, sc in each st across to last st, 3 sc in last st; join with sl st in first sc – 184 sc.
Fasten off.

BACK

With C, ch 37.

Row 1 (RS): Sc in 2nd ch from hook and in each ch across – 36 sc.

Rows 2-52: Ch 1, turn, sc in each st across.

Do not fasten off.

TRIM

Rnd 1: Continuing with C, ch 1, do not turn, work 52 sc evenly spaced along side edge; working along opposite side of foundation ch, work 3 sc in ch at base of first sc of Row 1, sc in each ch across to ch at base of last sc, 3 sc in last ch; work 52 sc evenly spaced along next side edge, work 3 sc in first sc of Row 52, sc in each st across to last st, 3 sc in last st; join with sl st in first sc – 184 sc.

Fasten off.

ASSEMBLY

Hold Front and Back WS together with sts and rows matching. With Front facing you and working through both thicknesses, draw up a loop of A in center sc of any 3-sc corner, sl st in each st around, inserting pillow form before working along last edge; join with sl st in first sl st.

Fasten off.

FINISHING

TASSELS (MAKE 8 – 4 EACH WITH B AND C)

Cut a 10 in. (25.5 cm) piece of B, thread into blunt needle and set aside for tie.

Wrap yarn around 3 in. (7.5 cm) piece of cardboard 12 times.

Insert threaded needle under all strands at upper edge of cardboard. Pull tightly and knot securely near strands. Cut yarn loops at lower edge of cardboard.

Trim tassel ends evenly.

Tie 2 tassels, 1 of each color, to each corner of Pillow.

ABBREVIATIONS

beg = begin(ning)

ch = chain

rnd = round

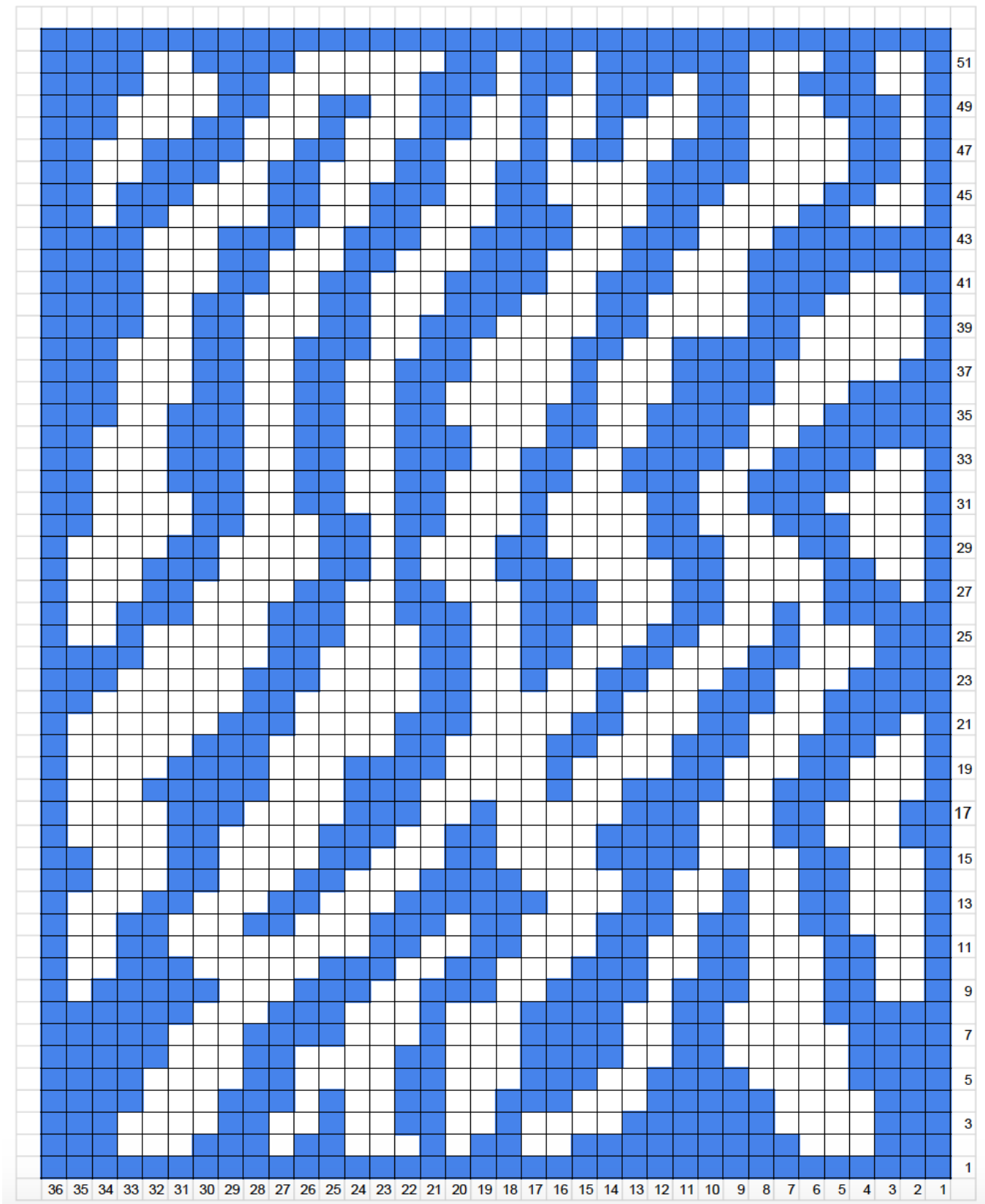
RS = right side

sc = single crochet

sl st = slip stitch

st(s) = stitch(es)

Every effort has been made to produce accurate and complete instructions. We cannot be responsible for variance of individual crafters, human error, or typographical mistakes.



For thousands of free patterns, visit our website www.LionBrand.com
To order visit our website www.lionbrand.com or call: (800) 258-YARN (9276) any time!
Copyright ©1998-2020 Lion Brand Yarn Company, all rights reserved.

No pattern or other material may be reproduced -- mechanically, electronically, or by any other means, including photocopying - without written permission of Lion Brand Yarn Company.