

MUD Pannier Fitting Instructions

Please note: The back panel in the MUD Pannier is not drilled with any fixing holes nor do we supply fixings for mounting the MUD Pannier to your vehicle. This is so the user can drill their own fixing holes to correspond with their preferred fixing method & mounting style/location on their vehicle.

Assembling the MUD Pannier.

We recommend using Loctite/thread-lock solution on all fasteners if this product will be used in prolonged off-road environments.

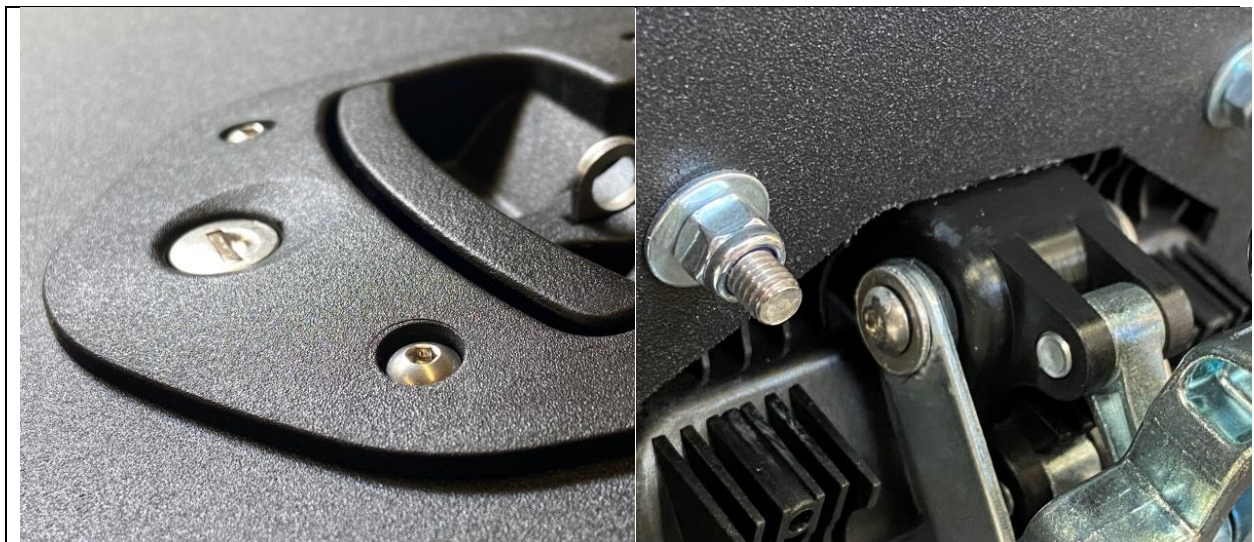
We supply two different pairs of self-adhesive front and rear reflectors with the MUD Pannier. Square and Round. You decide which you prefer. Fitting of the reflectors is entirely optional.

Fit the 6 x nut-caps to the hinge fixings within the bottom of the Pannier.

Attach the 4 x footman loops to the threaded studs within the Pannier using the M5 non-nyloc nuts and spring washers.



Attach the 2 x handles using the M5 button heads and nyloc nuts and flat washers.



Thread the webbing straps through the footman loops as per below. Remember to thread the plastic retention loop onto the strap once you've threaded the strap through both footman loops.



When the Pannier is securely mounted onto the vehicle, tension the straps so that the lid sits level. Trim off the excess strap length with a sharp knife or scissors. Remember to leave enough spare strap length to allow you to adjust the height of the lid when in use on uneven ground. Seal off the end of the webbing strap with a lighter or soldering torch.



Thread the excess strap through the strap retention loop to retain the loose end.



The handle latches should click firmly into place and sit flush when locked correctly. You'll be able to tell what feels correct when operating the handle. The metal loop on the handle is for a padlock.



Adjust the latching tension on the handles by releasing the lock-nut and screwing the locking bolt in or out.



Re-tighten the lock-nut when you're happy with the latching action of the handle.

