



***Free Knitting Pattern***  
**Lion Brand® Hometown®**  
**Star Style Cardigan**  
**Pattern Number: M20205**



## **SKILL LEVEL - EASY**

### **SIZE**

One Size

**Finished Bust** About 43 in. (109 cm)

**Finished Length** About 25 1/2 in. (65 cm)

### **MATERIALS**

- LION BRAND® HOMETOWN® (Art. #135)

#109 Fort Worth 2 balls (A)

#172 Oklahoma City Green 2 balls (B)

#153 South Dakota Black 2 balls (C)

#158 Pittsburgh Yellow 2 balls (D)

#133 Syracuse Orange 2 balls (E)

#113 Cincinnati Red 2 balls (F)

- LION BRAND circular knitting needle size 11 (8 mm), 29 in. (73.5 cm) long
- LION BRAND circular knitting needle size 13 (9 mm), 29 in. (73.5 cm) long
- LION BRAND large-eyed blunt needle

### **ADDITIONAL MATERIALS**

5 buttons, 1 in. (25 mm) diameter

### **GAUGE**

9 sts + 16 rows = about 4 in. (10 cm) in Seed st with larger needle.

BE SURE TO CHECK YOUR GAUGE.

### **STITCH EXPLANATION**

#### **yo (yarn over)**

An increase that also creates a buttonhole, worked as follows:

1. Bring yarn to front, between the needles.
2. Take yarn to back, over the right needle. This creates the new st. You are now ready to proceed with the next st as instructed.

### **PATTERN STITCHES**

#### **K1, p1 Rib (worked over an even number of sts)**

**Row 1:** \*K1, p1; rep from \* to end of row.

**Row 2:** K the knit sts and p the purl sts.

Rep Row 2 for K1, p1 Rib.

#### **Seed St (worked over an even number of sts)**

For thousands of free patterns, visit our website [www.LionBrand.com](http://www.LionBrand.com)

To order visit our website [www.lionbrand.com](http://www.lionbrand.com) or call: (800) 258-YARN (9276) any time!

Copyright ©1998-2018 Lion Brand Yarn Company, all rights reserved.

No pattern or other material may be reproduced -- mechanically, electronically, or by any other means, including photocopying - without written permission of Lion Brand Yarn Company.

**Row 1:** \*K1, p1; rep from \* to end of row.

**Row 2:** P the knit sts, and k the purl sts.

Rep Row 2 for Seed st.

## NOTES

1. Cardigan is worked in 5 pieces: Back, 2 Fronts and 2 Sleeves.
2. Each piece is worked from the lower edge upwards beginning with a K1, p1 rib. Above the rib, the body of each piece is worked in Seed st with squares of color worked in intarsia colorwork.
3. When working intarsia, use a separate ball for each section of color. Do not carry yarn across WS of work between color changes. Twist yarns on WS to prevent holes.
4. Rows of intarsia squares are worked following Charts. Except for the final squares, each square is 12 sts wide and 16 rows high. The letter(s) in each square indicate the yarn color to use when knitting the square.
5. When 2 yarn colors are listed in a square, alternate 2 rows with the first color then 2 rows with the second color to make stripes.
6. A circular needle is used to accommodate width of pieces. Work back and forth in rows on the circular needle just as if working on straight needles.
7. When you see work 'even' in the instructions, this means to continue on in the pattern st you have established without changing the st count by increasing, decreasing, or binding off.
8. When you see 'as established' in the instructions, this means to continue in the current pattern st. For example, to continue in a rib pattern, k the knit sts and p the purl sts.

## BACK

With larger needle and B, cast on 48 sts.

Work in K1, p1 Rib for 7 rows.

## Beg Seed St Pattern

**Row 1 (RS):** With C, work in Seed st over first 12 sts; with A, work in Seed st over next 12 sts; with E, work in Seed st over next 12 sts; with F, work in Seed st over next 12 sts.

**Row 2:** Working with yarn colors matching sts in previous row, work in Seed st to end of row.

Continue to work in Seed st and change yarn color following Back Chart until the first 5 rows of intarsia squares have been completed. **Note:** Except for final squares, each square is 16 rows high.

Continue to work in Seed st and change yarn color following Back Chart until 6 rows of the last row of intarsia squares have been completed.

## Shape Shoulders

For thousands of free patterns, visit our website [www.LionBrand.com](http://www.LionBrand.com)

To order visit our website [www.lionbrand.com](http://www.lionbrand.com) or call: (800) 258-YARN (9276) any time!

Copyright ©1998-2018 Lion Brand Yarn Company, all rights reserved.

No pattern or other material may be reproduced -- mechanically, electronically, or by any other means, including photocopying - without written permission of Lion Brand Yarn Company.

**Row 1 (RS):** With D, bind off 5 sts, work in Seed st for 7 sts; with B, work in Seed st over next 12 sts; with E work in Seed st over next 12 sts; with C, work in Seed st over next 12 sts – you will have 43 sts in this row.

**Row 2:** Working with yarn colors matching sts in previous row, bind off 5 sts, work in Seed st to end of row – 38 sts.

**Next 4 Rows:** Continue to work in Seed st, bind off 5 sts at beg of each row, and change yarn color following Back chart – 18 sts when all bind offs have been completed.

Using matching yarn colors, bind off rem 18 sts.

## LEFT FRONT

With larger needle and B, cast on 24 sts.

Work in K1, p1 Rib for 7 rows.

## Beg Seed St Pattern

**Row 1 (RS):** With C, work in Seed st over first 12 sts; with A, work in Seed st over next 12 sts.

**Row 2:** Working with yarn colors matching sts in previous row, work in Seed st to end of row.

Continue to work in Seed st and change yarn color following Left Front Chart until the first 5 rows of intarsia squares have been completed. **Note:** Except for the final squares, each square is 16 rows high.

## Shape Neck

**Row 1 (RS):** With D, work in Seed st over first 12 sts; with F, work in Seed st over next 12 sts.

**Row 2:** Working with yarn colors matching sts in previous row, bind off 3 sts, work in Seed st to end of rows – 21 sts.

Continue to work in Seed st, bind off 1 st at beg of each WS row and change yarn color following Left Front Chart until 6 rows of the last row of intarsia squares have been completed and 19 sts rem on needle.

## Shape Shoulders and Continue Shaping Neck

**Row 1 (RS):** With D, bind off 5 sts, work in Seed st for 7 sts; with B, work in Seed st to end of row – 14 sts.

**Row 2:** Working with yarn colors matching sts in previous row, bind off 1 st, work in Seed st to end of row – 13 sts.

Continue to work in Seed st, bind off 5 sts at beg of each RS row, bind off 1 st at beg of each WS row and change yarn color following Left Front chart until only 1 st rem

Fasten off last st.

## RIGHT FRONT

With larger needle and B, cast on 24 sts.

Work in K1, p1 Rib for 7 rows.

### **Beg Seed St Pattern**

**Row 1 (RS):** With E, work in Seed st over first 12 sts; with F, work in Seed st over next 12 sts.

**Row 2:** Working with yarn colors matching sts in previous row, work in Seed st to end of row.

Continue to work in Seed st and change yarn color following Right Front Chart until the first 5 rows of intarsia squares have been completed.

### **Shape Neck**

**Row 1 (RS):** With E, bind off 3 sts, work in Seed st for 9 sts; with F, work in Seed st over next 12 sts – 21 sts.

**Row 2:** Working with yarn colors matching sts in previous row, work in Seed st to end of row.

Continue to work in Seed st, bind off 1 st at beg of each RS row and change yarn color following Right Front Chart until 6 rows of the last row of squares have been completed and 19 sts rem on the needle.

### **Shape Shoulders and Continue Shaping Neck**

**Row 1 (RS):** With E, bind off 1 st, work in Seed st for 6 sts; with C, work in Seed st to end of row – 18 sts.

**Row 2:** Working with yarn colors matching sts in previous row, bind off 5 sts, work in Seed st to end of row – 13 sts.

Continue to work in Seed st, bind off 1 st at beg of each RS row, bind off 5 sts at beg of each WS row and change yarn color following Right Front chart until only 1 st rem

Fasten off last st.

### **SLEEVES (make 2)**

With larger needle and B, cast on 24 sts.

Work in K1, p1 Rib for 7 rows.

### **Beg Seed St Pattern**

**Row 1 (RS):** With B, work in Seed st over first 12 sts; with A, work in Seed st over next 12 sts.

**Row 2:** Working with yarn colors matching sts in previous row, work in Seed st to end of row.

Continue to work in Seed st, changing yarn color following Sleeve Chart, and increase 1 st at beg and end of every 8th row 8 times until the first 4 rows of intarsia squares have been completed – you will have 40 sts when all increases have been completed. **Note:** Except for final squares, each square is 16 rows high.

Continue to work even in Seed st and change yarn color following Sleeve Chart until 6 rows of the last row of intarsia squares have been completed.

### **Shape Top of Sleeve**

For thousands of free patterns, visit our website [www.LionBrand.com](http://www.LionBrand.com)

To order visit our website [www.lionbrand.com](http://www.lionbrand.com) or call: (800) 258-YARN (9276) any time!

Copyright ©1998-2018 Lion Brand Yarn Company, all rights reserved.

No pattern or other material may be reproduced -- mechanically, electronically, or by any other means, including photocopying - without written permission of Lion Brand Yarn Company.

**Row 1 (RS):** With D, bind off 4 sts; working D sts with D, C sts with C, E sts with E, and A sts with A, work in Seed st to end of row – 36 sts.

**Row 2:** Working with yarn colors matching sts in previous row, bind off 4 sts, work in Seed st to end of row – 32 sts.

**Next 6 Rows:** Continue to work in Seed st, bind off 4 sts at beg of each row, and change yarn color following Sleeve chart – 8 sts when all bind offs have been completed.

Using matching yarn colors, bind off rem 8 sts.

## FINISHING

Sew shoulder seams.

### Collar

From RS with smaller needle and D, pick up and k52 sts evenly spaced around neck edge.

Work in K1, p1 Rib for 5 rows.

Change to larger needle and F.

Work in Seed st for 12 rows.

Bind off.

### Button Band

From RS with smaller needles and A, pick up and k49 sts evenly spaced along left front edge.

**Row 1 (WS):** P1, \*k1, p1; rep from \* across.

Work in K1, p1 Rib as established for 4 more rows.

Bind off.

### Buttonhole Band

From RS with smaller needles and A, pick up and k49 sts evenly spaced along right front edge.

**Row 1 (WS):** P1, \*k1, p1; rep from \* across.

**Row 2 (Buttonhole Row):** Work in K1, p1 Rib as established over first 5 sts, \*yo, k2tog, work in K1, p1 Rib over next 8 sts; rep from \* 3 more times, yo, k2tog, work in K1, p1 Rib to end of row.

Work in K1, p1 Rib as established for 3 more rows.

Bind off.

Sew in Sleeves. Sew side and Sleeve seams. Sew buttons to button band, opposite buttonholes.

Weave in ends.

## ABBREVIATIONS

beg = begin(ning)

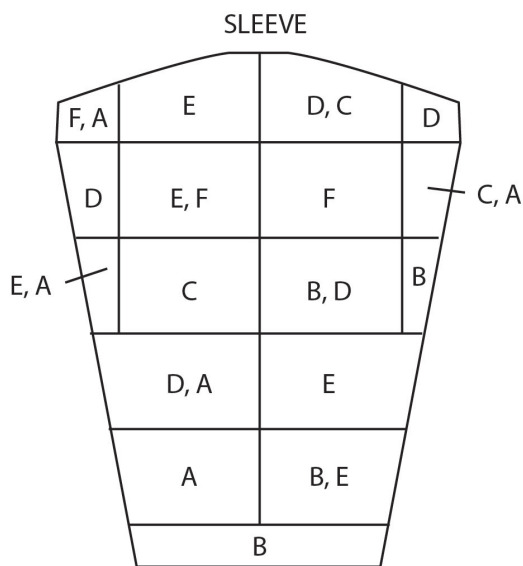
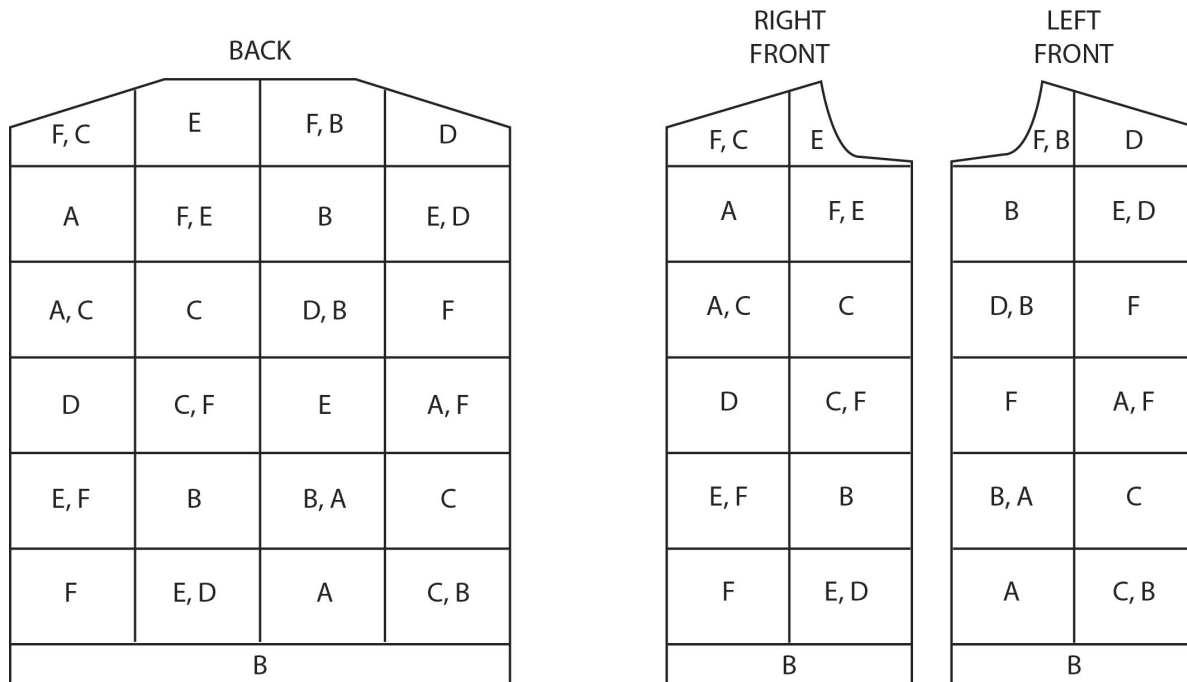
k = knit

k2tog = knit 2 stitches together

p = purl  
rem = remain(ning)(s)  
rep = repeat  
RS = right side  
st(s) = stitch(es)  
WS = wrong side

*Every effort has been made to produce accurate and complete instructions. We cannot be responsible for variance of individual crafters, human error, or typographical mistakes.*





For thousands of free patterns, visit our website [www.LionBrand.com](http://www.LionBrand.com)  
 To order visit our website [www.lionbrand.com](http://www.lionbrand.com) or call: (800) 258-YARN (9276) any time!  
 Copyright ©1998-2018 Lion Brand Yarn Company, all rights reserved.  
 No pattern or other material may be reproduced -- mechanically, electronically, or by any other means, including photocopying - without written permission of Lion Brand Yarn Company.



