



# Sliding Doors Throw Pillow

Designer: Two of Wands  
Lion Brand® Hue + Me  
Pattern Number: M20290.TWH

Level 2 - Easy ● ● ○ ○



## DESCRIPTION:

Dueling steps of color accent a simple background to create this graphic decorative pillowcase. The beginner-friendly pattern utilizes easy color changes and basic stitches for a modern look and quick project.

## MATERIALS:

- 2 skeins **Lion Brand Yarn Hue + Me in Shadow** (617-150) for main color
- 1 skein **Lion Brand Yarn Hue + Me in Werewolf** (617-152) for contrast color 1
- 1 skein **Lion Brand Yarn Hue + Me in Haze** (617-144) for contrast color 2

## NOT INCLUDED IN THE KIT:

- Size US K/10.5 (6.5mm) crochet hook
- Tapestry needle
- 16"/40.5cm pillow insert

## SIZES:

One size only

## GAUGE:

11 sts + 6.5 rows = 4"/10cm in double crochet

## FINISHED MEASUREMENTS:

**Width:** 16"/40.5cm

**Height:** 16"/40.5cm

## PATTERN NOTES:

Pillow is worked flat in back and forth rows in two panels which are then seamed. Turn at the end of each row. While traditionally double crochet uses 3 turning chains at the beginning of each row, this pattern only uses 1 chain which keeps the edges cleaner and easier to seam without leaving holes. To change color, work the last yarn over of the previous stitch with the new color. When changing to a contrast color, the main color will be "carried" by simply laying it on top of the row below and crocheting over it in order to bring this yarn along to the point where it will be used again (this technique is known as tapestry crochet).

Chart is provided for colorwork. Chart is read right to left on odd rows and left to right on even rows. Pillowcase is slightly smaller than pillow insert so it can be stretched taught over it.

## PATTERN:

### **Panels** (make 2):

With MC, ch 41. Refer to chart for colorwork or follow instructions below. Chart is read right to left for odd numbered rows and left to right for even numbered rows.

**Row 1 (RS):** Starting in the 2nd ch from the hook, dc across row with MC. (40 sts)

**Row 2:** Ch 1, dc across row with MC.

**Row 3:** Ch 1, dc 22 with MC, dc 12 with CC1, dc 6 with MC.

**Row 4:** Ch 1, dc 6 with MC, dc 12 with CC1, dc 22 with MC.

**Row 5:** Ch 1, dc across row with MC.

**Row 6:** Ch 1, dc 10 with MC, dc 12 with CC2, dc 18 with MC.

**Row 7:** Ch 1, dc 18 with MC, dc 12 with CC2, dc 10 with MC.

**Rows 8-19:** Rep rows 2-7, two more times.

**Rows 20-23:** Rep rows 2-5, one more time.

**Row 24:** Ch 1, dc across row with MC.

*Fasten off. Secure and weave in all ends.*

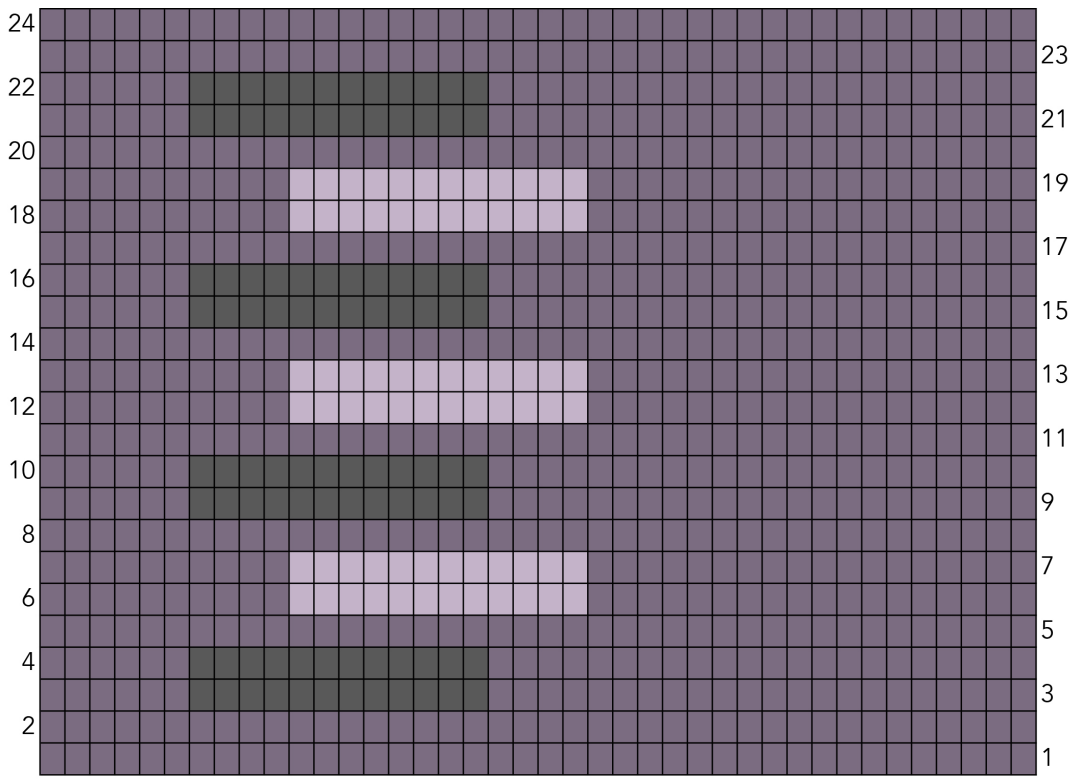
Seam 3 sides of pillowcase, then insert pillow and seam final side.

### **TASSELS:**

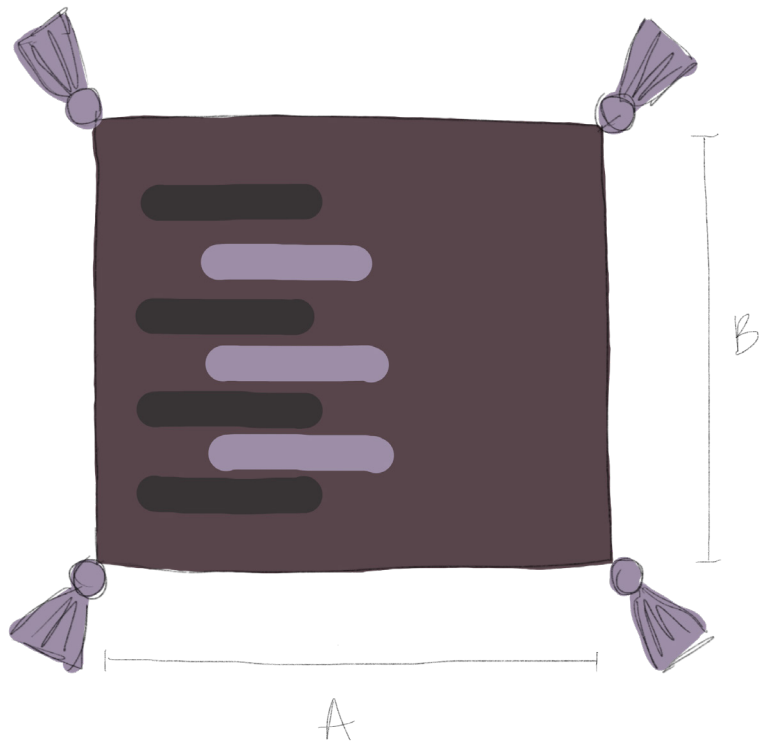
Cut eighty 12"/30.5cm lengths and eight 18"/46cm lengths of CC2. Divide the 12"/30.5cm lengths into four groups of 20. Tie each bundle at the middle point with one of the 18"/46cm lengths. Fold each bundle in half so that the tie is at the tip of the loop created with the fold.

Tie crosswise around each folded bundle about 1"/2.5cm below the top of the fold with the remaining 18"/46cm lengths. Wrap the tails of the ties around and around the bundles and then thread them inside and down the middle of the bundles with a tapestry needle. Tie the tops of the tassels onto the four corners of the pillow and knot to secure. Thread the tails inside and down the middle of the tassels using a tapestry needle. Trim tassels to desired length.





- Main color
- Contrast color 1
- Contrast color 2



**(A)** Width: 16"/40.5cm  
**(B)** Height: 16"/40.5cm

## ***Abbreviations (US Terms):***

**CC** – contrast color

**Ch** – chain

**Dc** – double crochet

**MC** – main color

**Rep** – repeat

**RS** – right side

**St(s)** – stitch(es)

For more information or additional patterns, you can visit: [www.LionBrand.com](http://www.LionBrand.com)

For thousands of free patterns, visit our website [www.LionBrand.com](http://www.LionBrand.com)

To order visit our website [www.lionbrand.com](http://www.lionbrand.com) or call: (800) 258-YARN (9276) any time! Copyright ©1998-2020 Lion Brand Yarn Company, all rights reserved.

No pattern or other material may be reproduced -- mechanically, electronically, or by any other means, including photocopying - without written permission of Lion Brand Yarn Company.