



## *Free Crochet Pattern*

# LION BRAND® BASIC STITCH PREMIUM™—DIY GLOW **SKELETON BABY COSTUME**

Pattern Number: M20253 BSP DG



## SKILL LEVEL – EASY

## SIZES

3-6 months

**Finished Costume Width** About 10 1/2 in. (26.5 cm), measured flat

**Finished Costume Length** About 21 1/2 in. (54.5 cm)

**Finished Hat Width** About 7 in. (18 cm), measured flat at widest

## MATERIALS

- **LION BRAND® BASIC STITCH PREMIUM™** (Art. #201)  
#153 Black 3 balls (A)
- **LION BRAND® DIY GLOW** (Art. #206)  
#098 Natural 2 balls (B)
- **LION BRAND®** crochet hook size I-9 (5.5 mm)
- **LION BRAND®** stitch markers
- **LION BRAND®** large-eyed blunt needle



## GAUGE

17 sc = about 4 1/2 in. (11.5 cm); 22 rows = about 5 1/4 in. (13.5 cm).

Rnds 1-6 of Hat = about 4 in. (10 cm).

**BE SURE TO CHECK YOUR GAUGE.**

## STITCH EXPLANATIONS

**BPdc (Back Post double crochet)** Yarn over, insert hook from back to front then to back, going around post of indicated st, draw up a loop, (yarn over and draw through 2 loops on hook) twice. Skip top of st in front of the BPdc.

**FPdc (Front Post double crochet)** Yarn over, insert hook from front to back then to front, going around post of indicated st, draw up a loop, (yarn over and draw through 2 loops on hook) twice. Skip top of st behind the FPdc.

## NOTES

1. Costume is made in 6 pieces: Front and back of Body, and fronts and backs of Left and Right Sleeves. Pieces are sewn together and neck and wrist trim is added to complete the Costume.
2. Body and Sleeve fronts are worked in intarsia colorwork following Charts. Read RS rows of Charts from right to left and WS rows from left to right. Each row begins with a ch-1 turning ch (that does not count as a stitch and is not shown in the Charts). Each square of Chart represents a single crochet stitch worked in the indicated color.
3. To change yarn color, work last stitch of old color to last yarn over. Yarn over with new color and draw through all loops on hook to complete stitch. Proceed with new color.
4. Use a separate ball of yarn for each section of color. Do not “carry” and crochet over unused colors. To help with this, wind A into 6 separate balls and B into 5 separate balls before beginning.
5. Hat is worked in continuous rounds (spiral) from top downwards.

For thousands of free patterns, visit our website [www.LionBrand.com](http://www.LionBrand.com)

To order visit our website [www.lionbrand.com](http://www.lionbrand.com) or call: (800) 258-YARN (9276) any time!

Copyright ©1998-2020 Lion Brand Yarn Company, all rights reserved. No pattern or other material may be reproduced -- mechanically, electronically, or by any other means, including photocopying - without written permission of Lion Brand Yarn Company.

## **COSTUME**

### **BODY**

#### ***Front***

With A, ch 41.

**Row 1 (RS):** Sc in 2nd ch from hook and in each ch across – you will have 40 sc.

**Row 2:** Ch 1, turn, sc in each st across and change yarn color following Row 2 of Body Chart.

Continue to work in rows of single crochet and change yarn color following Body Chart until all 94 rows of Chart have been completed.

*Fasten off.*

#### ***Back***

With A, ch 41.

**Row 1 (RS):** Sc in 2nd ch from hook and in each ch across – 40 sc.

**Rows 2-94:** Ch 1, turn, sc in each st across.

*Fasten off.*

### **LEFT SLEEVE**

#### ***Front***

With A, ch 18.

**Row 1 (RS):** Sc in 2nd ch from hook and in each ch across – 17 sc.

**Row 2:** Ch 1, turn, sc in each st across and change yarn color following Row 2 of Left Sleeve Chart.

Continue to work in rows of single crochet and change yarn color following Left Sleeve Chart until all 30 rows of Chart have been completed.

*Fasten off.*

#### ***Back***

With A, ch 18.

**Row 1 (RS):** Sc in 2nd ch from hook and in each ch across – 17 sc.

**Rows 2-30:** Ch 1, turn, sc in each st across.

*Fasten off.*

### **RIGHT SLEEVE**

#### ***Front***

Make same as front of Left Sleeve, changing yarn color following Right Sleeve Chart.

#### ***Back***

Make same as back of Left Sleeve.

## FINISHING COSTUME

**Note:** Pieces are sewn together and neck and wrist trim worked with WS of pieces facing out. When seaming and trim are complete Costume is turned RS out.

With RS of pieces facing inwards, hold front and back of Left Sleeve together with stitches and rows matching. With A, sew long side edges of pieces together. Rep for Right Sleeve.

With RS of pieces facing inwards, hold front and back of Body together with stitches and rows matching. With A, sew shoulder seams together, sewing from corners towards center of top edge for about 2 in. (5 cm) and leaving about 6 1/2 in. (16.5 cm) open at center for neck opening.

Place markers on side edges of front and back of Body, about 4 1/2 in. (11.5 cm) from shoulder seams. With A, sew side seams from lower corners up to markers, leaving about 4 1/2 in. (11.5 cm) unsewn for armholes.

With A, sew Sleeves into armholes.

### Neck Trim

From WS, join yarn with sl st in any st of neck edge.

**Rnd 1:** Ch 1, sc in same st as joining sl st, sc evenly spaced all the way around neck edge, working an even number of sts; join with sl st in first sc.

**Rnd 2:** Ch 2 (does not count as a st), beg in same st as joining sl st, \*FPdc around next st, BPdc around next st; rep from \* around join with sl st in first FPdc.

*Fasten off.*

### Wrist Trim

From WS, join yarn with sl st in any st at wrist edge of one Sleeve.

Work wrist trim same as neck trim. Rep on second Sleeve.

*Fasten off.*

Turn Costume RS out.

*Weave in ends.*

## HAT

Wrap B around index finger. Insert hook into ring on finger, yarn over and draw up a loop. Carefully slip ring from finger and work the stitches of Rnd 1 into the ring.

**Rnd 1:** Ch 1, work 8 hdc in ring; do not join, work in continuous rnds (spiral).

Gently but firmly, pull tail to tighten center of ring.

Place a marker in last hdc made to indicate end of rnd. Move marker up as each rnd is completed.

**Rnd 2:** Work 2 hdc in each st around – 16 hdc.

**Rnd 3:** \*2 hdc in next st, hdc in next st; rep from \* around – 24 hdc.

**Rnd 4:** \*2 hdc in next st, hdc in next 2 sts; rep from \* around – 32 hdc.

**Rnd 5:** \*2 hdc in next st, hdc in next 3 sts; rep from \* around – 40 hdc.

**Rnd 6:** \*2 hdc in next st, hdc in next 4 sts; rep from \* around – 48 hdc.

**Rnd 7:** \*2 hdc in next st, hdc in next 5 sts; rep from \* around – 56 hdc.

**Rnds 8-15:** Hdc in each st around. At end of Rnd 15; join with sl st in next st.

**Rnds 16 and 17:** Ch 2 (does not count as a st), beg in same st as joining sl st, \*FPdc around next st, BPdc around next st; rep from \* around; join with sl st in first FPdc.

*Fasten off.*

## FINISHING

*Weave in ends.*

## ABBREVIATIONS

**beg** = begin(ning)(s)

**ch** = chain

**hdc** = half double crochet

**rep** = repeat

**rnd(s)** = round(s)

**RS** = right side

**sc** = single crochet

**sl st** = slip stitch

**st(s)** = stitch(es)

**WS** = wrong side

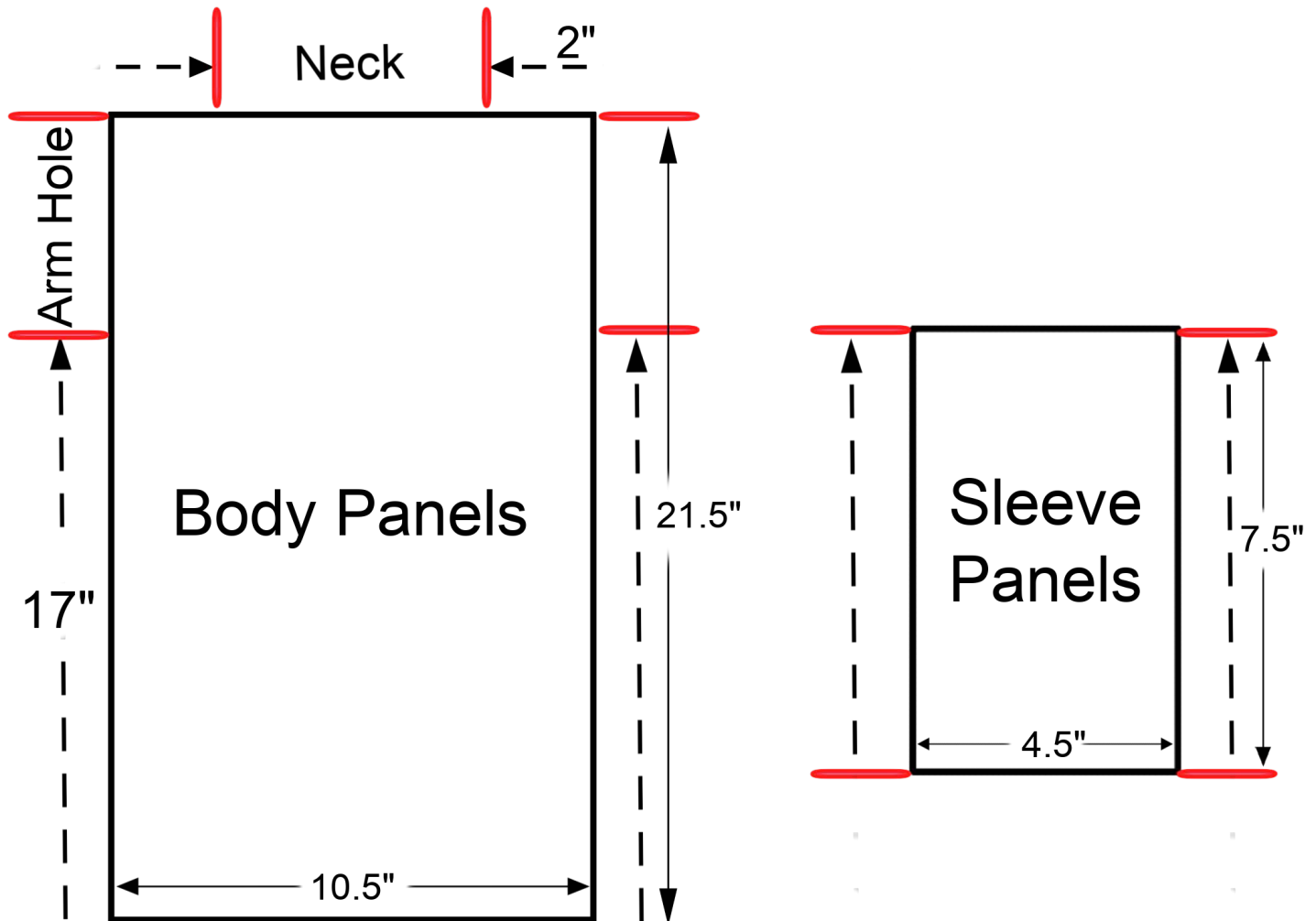
*Every effort has been made to produce accurate and complete instructions. We cannot be responsible for variance of individual knitters or crocheters, human error, or typographical mistakes.*

*©2020 Lion Brand Yarn Company, all rights reserved.*

For thousands of free patterns, visit our website [www.LionBrand.com](http://www.LionBrand.com)

To order visit our website [www.lionbrand.com](http://www.lionbrand.com) or call: (800) 258-YARN (9276) any time!

Copyright ©1998-2020 Lion Brand Yarn Company, all rights reserved. No pattern or other material may be reproduced -- mechanically, electronically, or by any other means, including photocopying - without written permission of Lion Brand Yarn Company.



*Every effort has been made to produce accurate and complete instructions. We cannot be responsible for variance of individual knitters or crocheters, human error, or typographical mistakes.*

*©2020 Lion Brand Yarn Company, all rights reserved.*

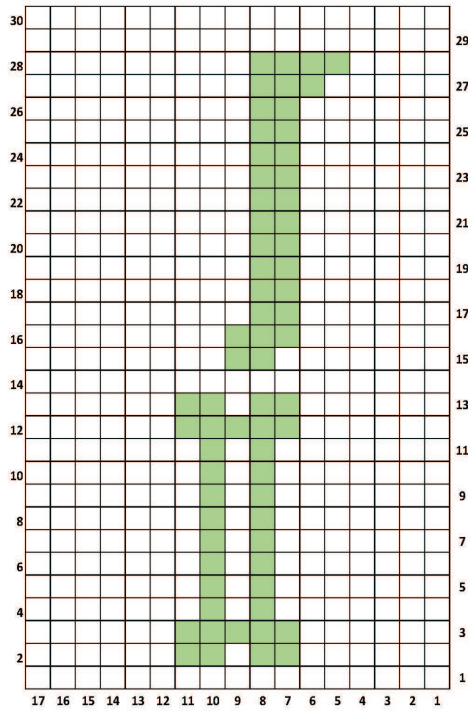
For thousands of free patterns, visit our website [www.LionBrand.com](http://www.LionBrand.com)

To order visit our website [www.lionbrand.com](http://www.lionbrand.com) or call: (800) 258-YARN (9276) any time!

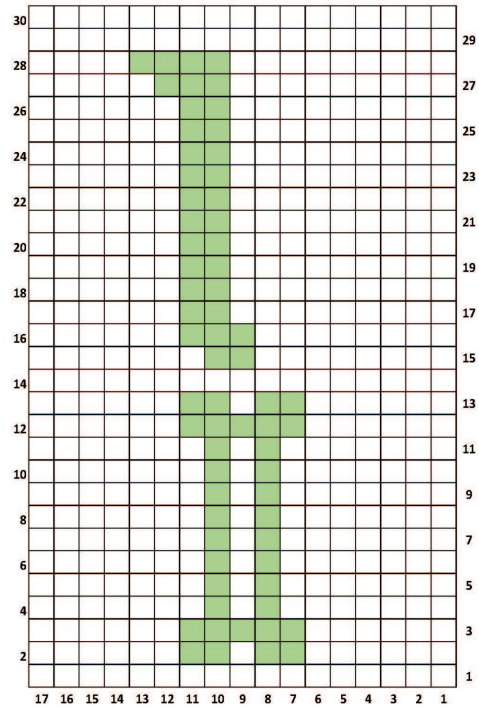
Copyright ©1998-2020 Lion Brand Yarn Company, all rights reserved. No pattern or other material may be reproduced -- mechanically, electronically, or by any other means, including photocopying - without written permission of Lion Brand Yarn Company.



**RIGHT SLEEVE CHART**



**LEFT SLEEVE CHART**



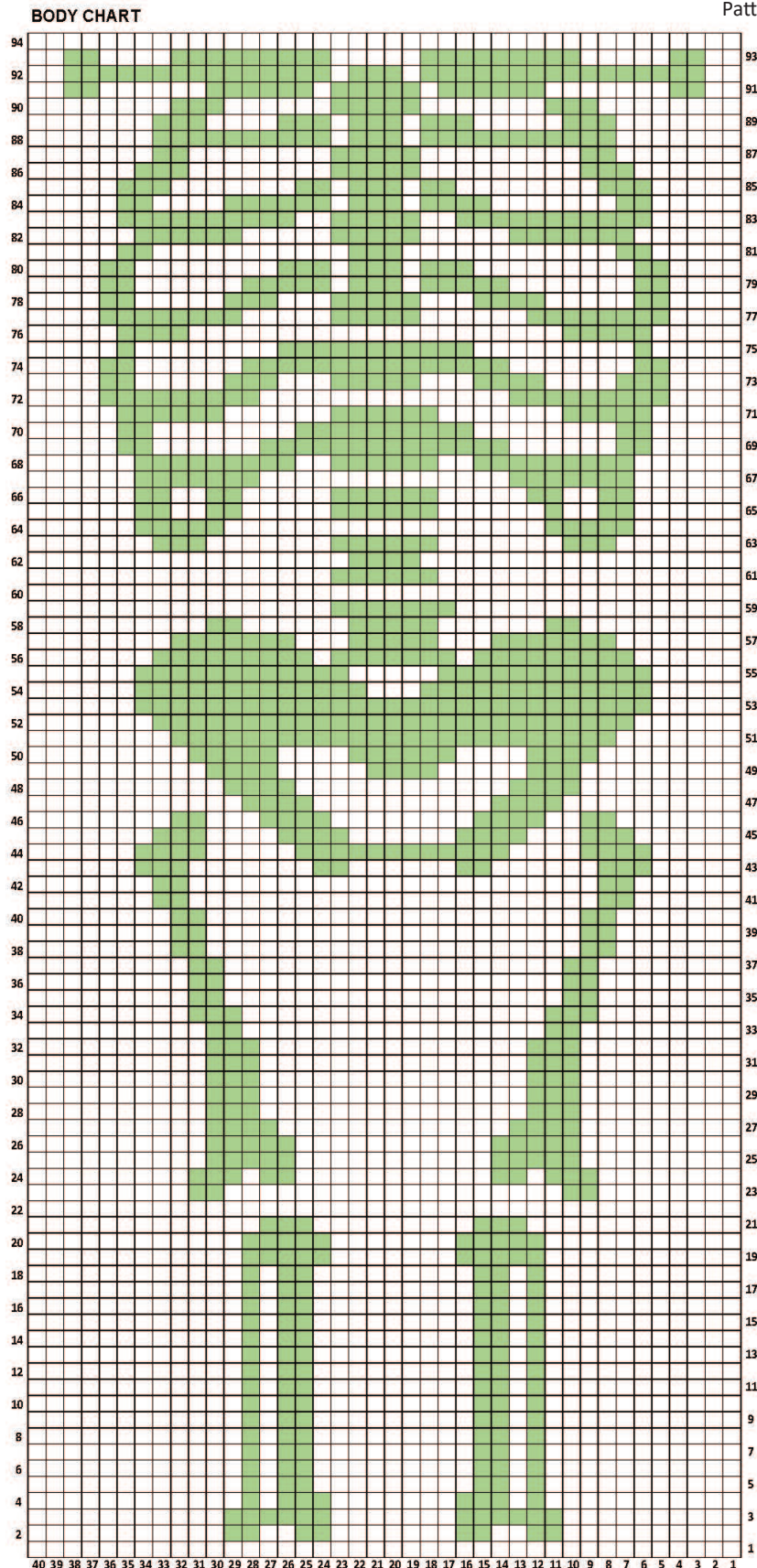
*Every effort has been made to produce accurate and complete instructions. We cannot be responsible for variance of individual knitters or crocheters, human error, or typographical mistakes.*

*©2020 Lion Brand Yarn Company, all rights reserved.*

For thousands of free patterns, visit our website [www.LionBrand.com](http://www.LionBrand.com)

To order visit our website [www.lionbrand.com](http://www.lionbrand.com) or call: (800) 258-YARN (9276) any time!

Copyright ©1998-2020 Lion Brand Yarn Company, all rights reserved. No pattern or other material may be reproduced -- mechanically, electronically, or by any other means, including photocopying - without written permission of Lion Brand Yarn Company.



*Every effort has been made to produce accurate and complete instructions. We cannot be responsible for variance of individual knitters or crocheters, human error, or typographical mistakes.*

*©2020 Lion Brand Yarn Company, all rights reserved.*

For thousands of free patterns, visit our website [www.LionBrand.com](http://www.LionBrand.com)

To order visit our website [www.lionbrand.com](http://www.lionbrand.com) or call: (800) 258-YARN (9276) any time!

Copyright ©1998-2020 Lion Brand Yarn Company, all rights reserved. No pattern or other material may be reproduced -- mechanically, electronically, or by any other means, including photocopying - without written permission of Lion Brand Yarn Company.