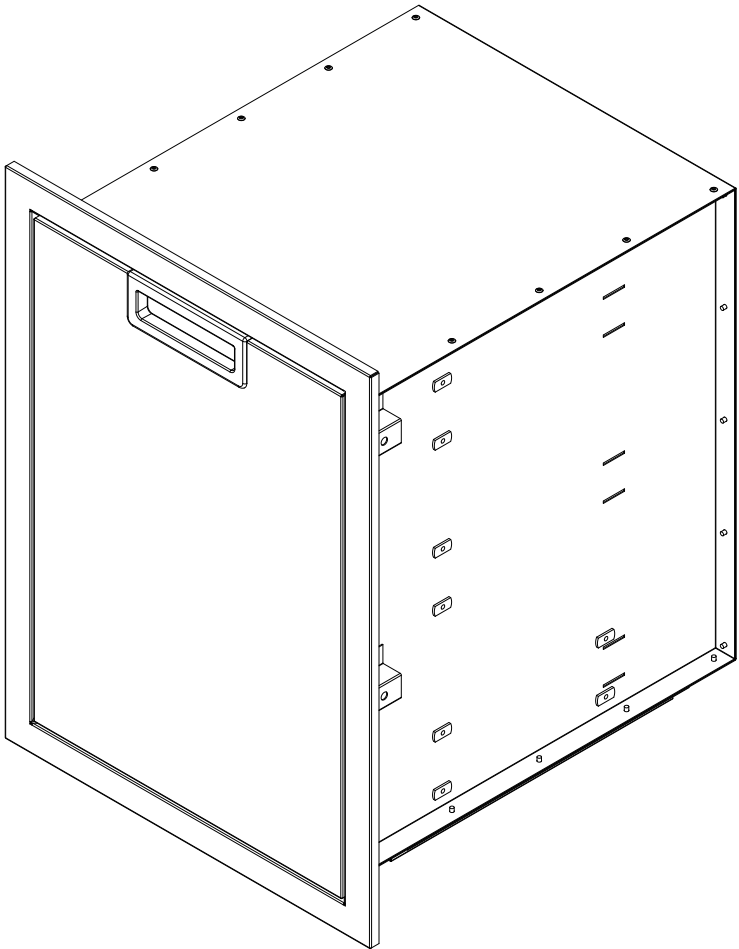
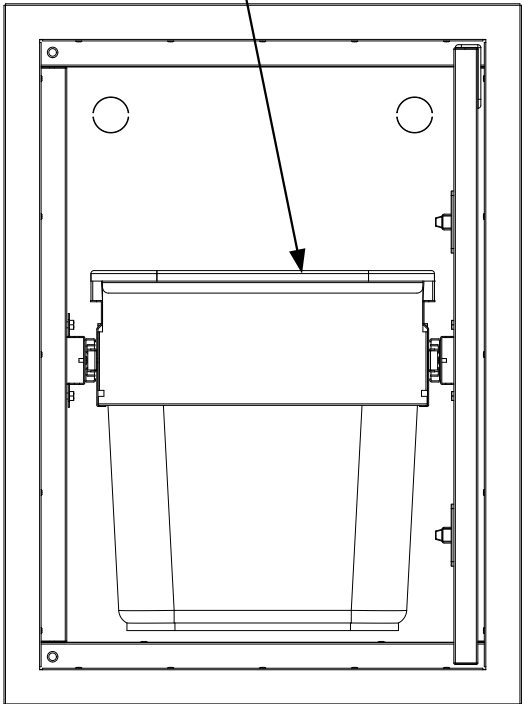
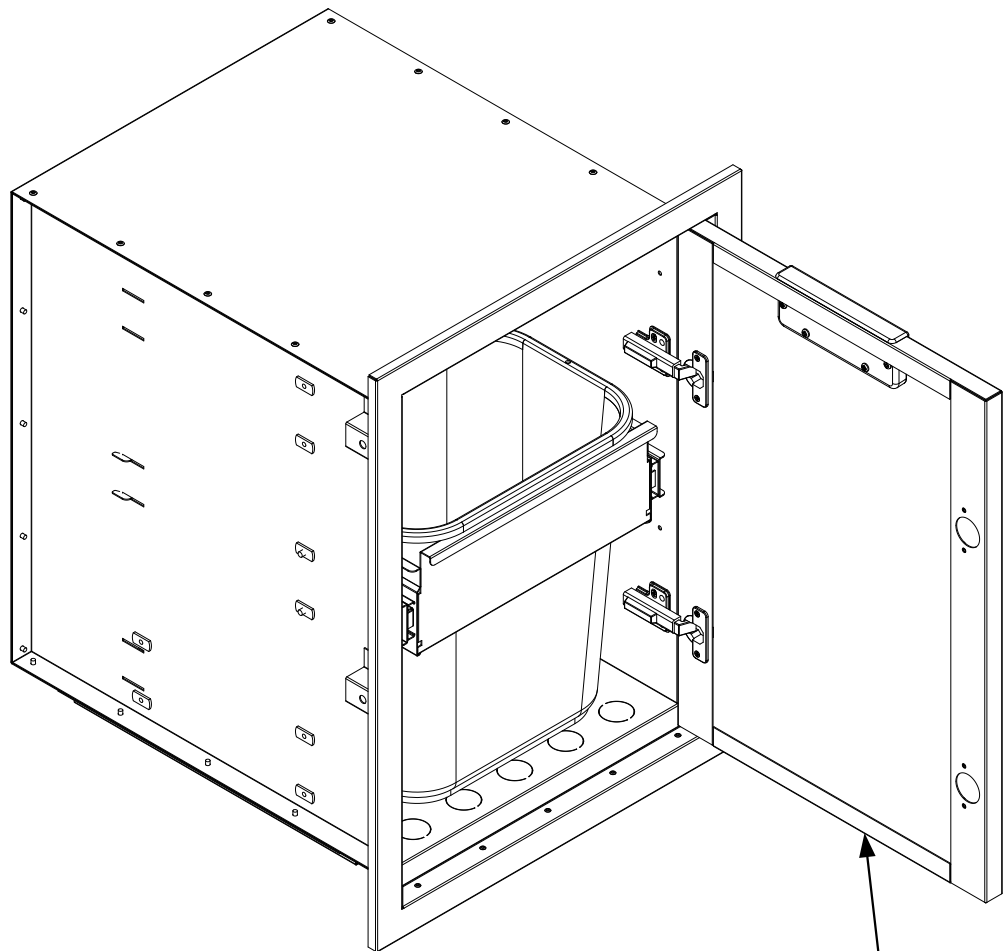


REVISION HISTORY			
REV	DESCRIPTION	DATE	APPROVED
-	Engineering Release	01/01/2020	Todd Stone

Garbage cabinet shown (IBILC-GH). Cabinet can be ordered with an optional drawer (IBILC-GH-1D) or the drawer can be added at a later date.



Door shown with righthand mounting option. Door hardware can be switched for a lefthand mount

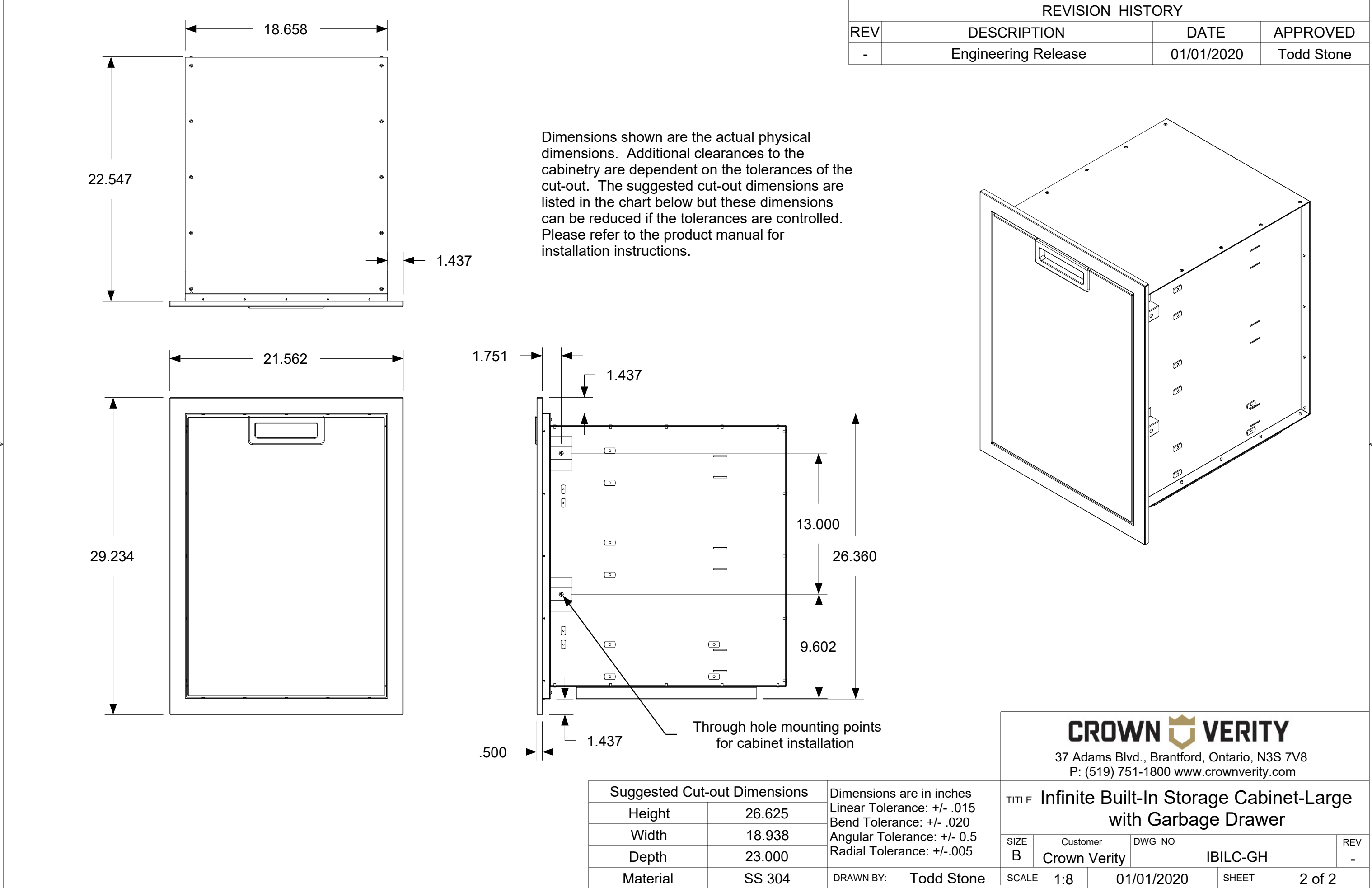
Suggested Cut-out Dimensions		Dimensions are in inches Linear Tolerance: +/- .015 Bend Tolerance: +/- .020 Angular Tolerance: +/- 0.5 Radial Tolerance: +/- .005
Height	26.625	
Width	18.938	
Depth	23.000	
Material	SS 304	DRAWN BY: Todd Stone

**CROWN VERITY**  
37 Adams Blvd., Brantford, Ontario, N3S 7V8  
P: (519) 751-1800 [www.crownverity.com](http://www.crownverity.com)

TITLE

Infinite Built-In Storage Cabinet-Large with Garbage Drawer

SIZE	Customer	DWG NO	REV
B	Crown Verity	IBILC-GH	-
SCALE	1:8	01/01/2020	SHEET 1 of 2



REVISION HISTORY			
REV	DESCRIPTION	DATE	APPROVED
-	Engineering Release	01/01/2020	Todd Stone

Dimensions shown are the actual physical dimensions. Additional clearances to the cabinetry are dependent on the tolerances of the cut-out. The suggested cut-out dimensions are listed in the chart below but these dimensions can be reduced if the tolerances are controlled. Please refer to the product manual for installation instructions.

**CROWN VERITY**

37 Adams Blvd., Brantford, Ontario, N3S 7V8  
P: (519) 751-1800 [www.crownverity.com](http://www.crownverity.com)

Suggested Cut-out Dimensions		Dimensions are in inches Linear Tolerance: +/- .015 Bend Tolerance: +/- .020 Angular Tolerance: +/- 0.5 Radial Tolerance: +/- .005
Height	26.625	
Width	18.938	
Depth	23.000	
Material	SS 304	DRAWN BY: Todd Stone

TITLE Infinite Built-In Storage Cabinet-Large with Garbage Drawer			
SIZE B	Customer Crown Verity	DWG NO IBILC-GH	REV -
SCALE 1:8	01/01/2020	SHEET 2 of 2	