



Free Knitting Pattern

LION BRAND® TRUBOO

MELODY SHAWL

Pattern Number: M20217 TB



SKILL LEVEL – EASY

SIZE

About 27 x 67 in. (68.5 x 170 cm) at longest and widest

MATERIALS

- LION BRAND® TRUBOO (Art. #837)
#122 Mushroom 3 balls
- LION BRAND® double pointed needles size 7 (4.5 mm)
- LION BRAND® crochet hook size G-6 (4 mm) (for provisional cast on only)
- LION BRAND® large-eyed blunt needle

ADDITIONAL MATERIALS

Circular knitting needle size 7 (4.5 mm), 29 in. (73.5 cm) long



GAUGE

22 sts + 27 rows = about 4 in. (10 cm) in Pattern A, unblocked.

20 sts + 24 rows = about 4 in. (10 cm) in Pattern A, blocked.

BE SURE TO CHECK YOUR GAUGE.

NOTES

1. Shawl is worked from the top downwards, beginning from a long narrow tab.
2. Sections of Shawl are worked in lacy eyelet patterns following Charts.
3. Shawl is shaped by increasing 4 sts every 2 rows. 2 of the increases are worked just inside the outer edgings and 2 of the increases are worked on either side of the center vertical insertion.
4. When you see 'work in pattern as established' in the instructions, this means to work the next row of the patterns, lining up sts as in previous rows.
5. A circular needle is used to accommodate number of sts. Work back and forth on the circular needle as if working on straight needles.

SHAWL

Tab

Use a provisional cast on as follows to cast on 3 sts:

With crochet hook, chain 7.

Cut the yarn and pull the end through the last chain made to secure it. Tie a loose knot on this tail to mark it as the end you'll use later to unravel the chain.

Turn the crocheted chain over and use circular needle to pick up and knit 1 stitch through the back bump of each of the center 3 crocheted chains.

Beg with a RS (knit) row, work in St st (k on RS, p on WS) on these 3 sts for 51 rows.

Rotate piece 90 degrees and pick up and k25 sts along side edge, picking up 1 st every other row. Rotate piece 90 degrees again, unzip your provisional cast on, and pick up the 3 live sts along the provisional cast on edge with your free needle and knit them – 31 sts. Turn.

Set Up Row (WS): P3, place marker (pm), p1, pm, p23, pm, p1, pm, p3.

Row 1 (RS): K3, slip marker (sm), work Row 1 of Pattern A, sm, work Row 1 of Pattern B, sm, work Row 1 of Pattern A, sm, k3 – 35 sts.

Keeping first and last 3 sts in St st, work in patterns as established until you have 61 sts in each of the Pattern A sections, ending with a Row 18 of Pattern A as the last row you work – 151 sts total.

Next Row (RS): K3, sm, work Row 1 of Pattern C, sm, work the next row of Pattern B, sm, work Row 1 of Pattern C, sm, k3 – 155 sts.

Keeping first and last 3 sts in St st, work in patterns as established until Row 12 of Pattern C is completed – 175 sts.

Next Row (RS): K3, sm, work Row 1 of Pattern D, sm, work Row 1 of Pattern B, sm, work Row 1 of Pattern D, sm, k3 – 179 sts.

Keeping first and last 3 sts in St st, work in patterns as established until you have 133 sts in each of the Pattern D sections, ending with a Row 12 of Pattern B as the last row you work – 295 sts.

Do not bind off. Cut the yarn.

FINISHING

Perpendicular Border

With double pointed needles, cast on 10 sts.

With RS of Shawl facing you, beg Pattern E, working Row 1 unattached to the shawl. (You'll begin attaching the border to the Shawl on Row 2 of Pattern E.)

Rep Rows 1-8 of Pattern E along the lower edge of Shawl, attaching one live Shawl st to the edging every 2 rows, and 2 double joins at each lower point.

Bind off loosely.

Block Shawl.

Tips on working the perpendicular border:

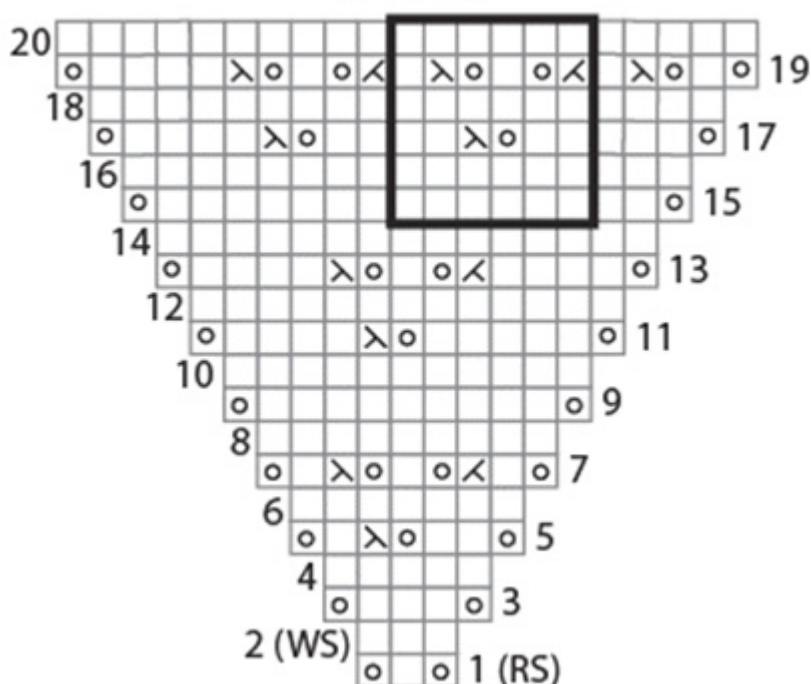
Begin working the border pattern, and at the end of every WS row, attach 1 live stitch from the main body of the shawl to the border in this manner: Slip the last border stitch with the yarn in back, knit the next live stitch from the main body, then slip the border stitch over. In this way, every 2 rows of border will incorporate or "eat up" 1 live stitch from the shawl body.

When going around the points of the shawl on either side of the vertical insertion (Pattern B), use "double joins" to gather the border and prevent it from puckering. Make a double join as follows: on a WS row, slip the last border stitch and then knit into the previous live shawl stitch – the one you "ate up" in the previous row. This way, each live stitch from the body of the shawl will have 4 border rows instead of 2.

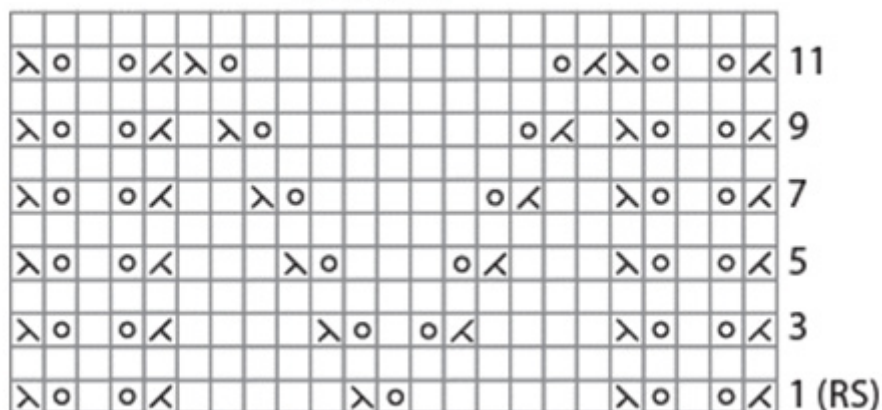
ABBREVIATIONS

- beg** = begin(ning)(s)
k = knit
p = purl
rep = repeat
RS = right side
st(s) = stitch(es)
St st = Stockinette stitch
WS = wrong side

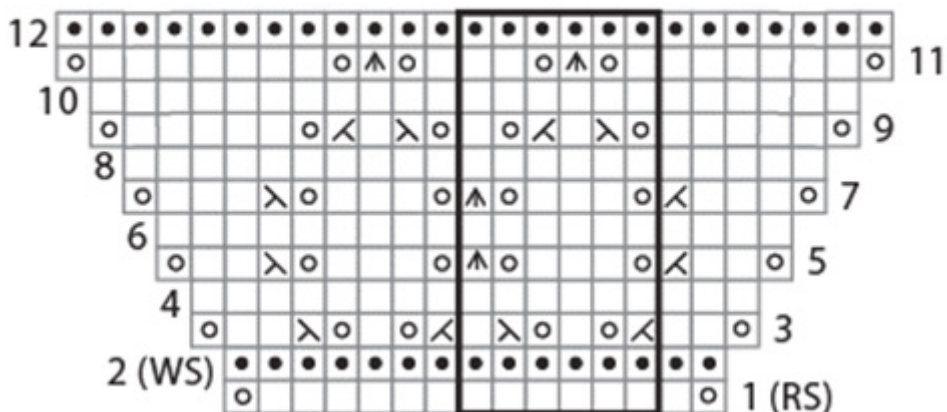
Pattern A



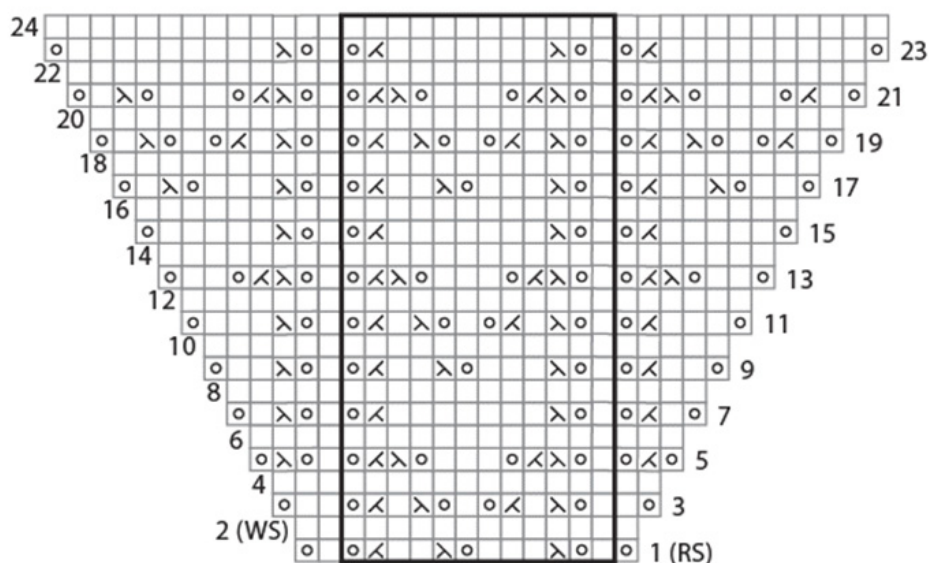
Pattern B



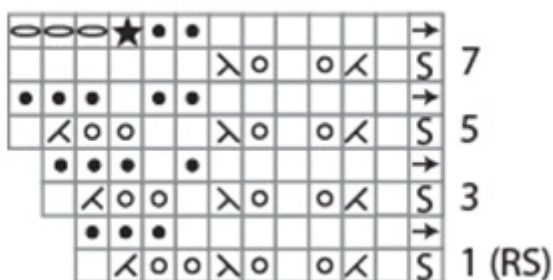
Pattern C




Pattern D



Pattern E



Symbol Key

- = On right-side rows: Knit;
On wrong-side rows: Purl
- = On right-side rows: Purl;
On wrong-side rows: Knit
- = yarn over
- ∧ = k2tog
- ∖ = ssk
- ♠ = s2kp2 = Slip the next 2 stitches at once knitwise, k1, p2sso
- ⊖ = bind off one stitch
- ★ = Stitch remaining after binding off
- S = Slip stitch purlwise
- = Slip the next edging stitch, knit the next stitch from the body of the shawl, pass the slipped stitch over
-  = Stitch and row repeat

Every effort has been made to produce accurate and complete instructions. We cannot be responsible for variance of individual knitters or crocheters, human error, or typographical mistakes.

©2020 Lion Brand Yarn Company, all rights reserved.

For thousands of free patterns, visit our website www.LionBrand.com

To order visit our website www.lionbrand.com or call: (800) 258-YARN (9276) any time!

Copyright ©1998-2020 Lion Brand Yarn Company, all rights reserved. No pattern or other material may be reproduced -- mechanically, electronically, or by any other means, including photocopying - without written permission of Lion Brand Yarn Company.