



Free Knitting Pattern

LION BRAND® NUBOO

SILAS CARDIGAN

Pattern Number: M20427 NUB



SKILL LEVEL – INTERMEDIATE

SIZES

S (M, L, 1X, 2X, 3X)

Finished Bust About 36 (40, 44, 48, 52, 56) in. (91.5 (101.5, 112, 122, 132, 142) cm)

Finished Length About 20 1/2 (21, 21 1/2, 22, 22 1/2, 23) in. (52 (53.5, 54.5, 56, 57, 58.5) cm)

Note: Pattern is written for smallest size with changes for larger sizes in parentheses. When only one number is given, it applies to all sizes. To follow pattern more easily, circle all numbers pertaining to your size before beginning.

MATERIALS

- LION BRAND® NUBOO (Art. #838)
#178 Dragonfly 6 (7, 8, 9, 10, 11) balls
- LION BRAND® knitting needles size 6 (4 mm)
- LION BRAND® stitch holders
- LION BRAND® large-eyed blunt needle



GAUGE

20 sts + 28 rows = about 4 in. (10 cm) in St st (k on RS, p on WS).

21 sts + 28 rows = about 4 in. (10 cm) in Sleeve pattern.

BE SURE TO CHECK YOUR GAUGE.

STITCH EXPLANATION

2/2 LC (2 over 2 left cross) Slip 2 sts to cable needle and hold in front, k2, then k2 from cable needle.

2/2 RC (2 over 2 right cross) Slip 2 sts to cable needle and hold in back, k2, then k2 from cable needle.

M1P (make 1 st as if to purl) An increase worked by lifting the horizontal strand lying between the needles and placing it onto the left needle. Purl this new stitch through the back loop – 1 st increased.

ssk (slip, slip, knit) Slip next 2 sts as if to knit, one at a time, to right needle; insert left needle into fronts of these 2 sts and knit them tog – 1 st decreased.

yo (yarn over)

An increase that also creates a small decorative hole (eyelet) in the fabric, worked as follows:

1. Bring yarn to front, between the needles.
2. Take yarn to back, over the right needle. This creates the new st. You are now ready to proceed with the next st as instructed.

PATTERN STITCHES

Sleeve Pattern (worked over multiple of 20 sts)

Row 1 (RS): *P1, k2, k2tog, yo, p3, p2tog, yo, p1, yo, p2tog, p3, yo, ssk, k2; rep from * to end.

Row 2 and all WS rows: K the knit sts, p the purl sts and p the yarn overs.

Row 3: *P1, k1, k2tog, yo, p3, p2tog, yo, k1, p1, k1, yo, p2tog, p3, yo, ssk, k1; rep from * to end.

Row 5: *P1, k2tog, yo, p3, p2tog, yo, k2, p1, k2, yo, p2tog, p3, yo, ssk; rep from * to end.

Row 7: *P1, k1 tbl, p3, p2tog, yo, k3, p1, k3, yo, p2tog, p3, k1 tbl; rep from * to end.

Row 9: *P1, k1 tbl, p4, k4, p1, k4, p4, k1 tbl; rep from * to end.

Row 11: P1, k1 tbl, p4, 2/2 LC, p1, 2/2 RC, p4, k1 tbl; rep from * to end.

Row 13: Rep Row 9.

Row 15: Rep Row 11.

Row 17: Rep Row 9.

Row 19: *P1, yo, p2tog, p3, yo, ssk, k2, p1, k2, k2tog, yo, p3, p2tog, yo; rep from * to end.

Row 21: *P1, k1, yo, p2tog, p3, yo, ssk, k1, p1, k1, k2tog, yo, p3, p2tog, yo, k1; rep from * to end.

Row 23: *P1, k2, yo, p2tog, p3, yo, ssk, p1, k2tog, yo, p3, p2tog, yo, k2; rep from * to end.

Row 25: *P1, k3, yo, p2tog, p3, k1 tbl, p1, k1 tbl, p3, p2tog, yo, k3; rep from * to end.

Row 27: *P1, k4, p4, k1 tbl, p1, k1 tbl, p4, k4; rep from * to end.

Row 29: *P1, 2/2 RC, p4, k1 tbl, p1, k1 tbl, p4, 2/2 LC; rep from * to end.

Row 31: Rep Row 27.

Row 33: Rep Row 29.

Row 35: Rep Row 27.

Row 36: K the knit sts, p the purl sts and p the yarn overs.

Rep Rows 1-36 for Sleeve pattern.

Twisted Rib (worked over a multiple of 2 sts)

Row 1 (WS): *P1, k1; rep from * to end of row.

Row 2: *P1, k1 tbl; rep from * to end of row.

Rep Rows 1 and 2 for Twisted Rib pattern.

TECHNIQUE EXPLANATION

Tubular Bind-Off

Tubular Bind-Off is a sewn bind-off that produces a stretchy edge that looks like K1, p1 Rib. Use Tubular Bind-Off when specified in pattern.

1. Cut the yarn, leaving a tail at least 2-3 times longer than the width of the piece. Thread the tail onto a blunt needle. Place the knitting needle holding the stitches in your left hand.
2. Insert the blunt needle, as if to knit, into the first stitch on the knitting needle and draw the yarn all the way through. Drop the first stitch from the knitting needle. Note: If first stitch is a purl, insert blunt needle into first 2 stitches, draw yarn through and drop both stitches from knitting needle.

3. Insert the blunt needle, as if to purl, into the 2nd stitch on the knitting needle and draw the yarn all the way through. Do not drop any stitches from the knitting needle.
4. Insert the blunt needle, as if to purl, into the first stitch on the knitting needle and draw the yarn all the way through. Drop the first stitch from the knitting needle.
5. Insert the blunt needle from the back to the front between the first 2 stitches on the knitting needle and draw the yarn all the way through.
6. Insert the blunt needle, as if to knit, into the 2nd stitch and draw the yarn all the way through to the back of the work.
7. Repeat steps #2-#6 until there are only 1 or 2 stitches remaining on the knitting needle. Repeat step #2. If there is still a stitch remaining on the knitting needle, insert the yarn needle as if to purl, draw through and drop the stitch from the needle.

NOTES

1. Cardigan is worked in 5 pieces: Back, 2 Fronts, and 2 Sleeves.
2. Each piece is worked from lower edge upwards. Back and Fronts are worked in St st (k on RS, p on WS).
3. Sleeves are worked in Sleeve pattern. Sleeve pattern can be worked from chart or from written instructions. When working from chart, read RS rows from right to left and WS rows from left to right.
4. When you see 'as established' in the instructions, this means to continue in the current pattern st, lining up sts as in previous rows.
5. When you see work 'even' in the instructions, this means to continue on in the pattern st you have established without changing the st count by increasing, decreasing, or binding off.

BACK

Cast on 92 (102, 112, 122, 132, 142) sts.

Beg with a WS row, work in Twisted Rib pattern for 5 rows.

Beg with a RS (knit) row, work in St st (k on RS, p on WS) until piece measures about 12 in. (30.5 cm) from beg, end with a WS row as the last row you work.

Shape Armholes

Next 2 Rows: Bind off 3 (4, 4, 5, 6, 7) sts, work in St st to end of row – 86 (94, 104, 112, 120, 128) sts.

Next 2 Rows: Bind off 2 (3, 3, 4, 5, 6) sts, work in St st to end of row – 82 (88, 98, 104, 110, 116) sts.

Next 4 Rows: Bind off 2 (2, 2, 3, 4, 5) sts, work in St st to end of row – 74 (80, 90, 92, 94, 96) sts.

Next 4 Rows: Bind off 1 (1, 2, 2, 2, 2) sts, work in St st to end of row – 70 (76, 82, 84, 86, 88) sts.

Work even in St st until armholes measure about 7 1/2 (8, 8 1/2, 9, 9 1/2, 10) in. (19 (20.5, 21.5, 23, 24, 25.5) cm) from beg, end with a WS row as the last row you work.

Shape Neck and Shoulders

Place markers on each side of center 36 (36, 36, 38, 40, 42) sts.

Row 1 (RS): Bind off 5 (6, 7, 7, 7, 7) sts, k to first marker for right shoulder, place 36 (36, 36, 38, 40, 42) sts between markers on a holder for back neck, join a 2nd ball of yarn and k to end of row for left shoulder – 12 (14, 16, 16, 16, 16) sts on right shoulder and 17 (20, 23, 23, 23, 23) sts on left shoulder.

You will now work both shoulders AT THE SAME TIME, using separate balls of yarn.

For thousands of free patterns, visit our website www.LionBrand.com

To order visit our website www.lionbrand.com or call: (800) 258-YARN (9276) any time!

Copyright ©1998-2021 Lion Brand Yarn Company, all rights reserved. No pattern or other material may be reproduced -- mechanically, electronically, or by any other means, including photocopying - without written permission of Lion Brand Yarn Company.

Row 2: On left shoulder, bind off 5 (6, 7, 7, 7, 7) sts, p to end; on right shoulder, bind off 2 sts, p to end – 10 (12, 14, 14, 14, 14) sts on right shoulder and 12 (14, 16, 16, 16, 16) sts on left shoulder.

Row 3: On right shoulder, bind off 5 (6, 7, 7, 7, 7) sts, k to end; on left shoulder, bind off 2 sts, k to end – 5 (6, 7, 7, 7, 7) sts on right shoulder and 10 (12, 14, 14, 14, 14) sts on left shoulder.

Row 4: On left shoulder, bind off 5 (6, 7, 7, 7, 7) sts, p to end; on right shoulder, p to end – 5 (6, 7, 7, 7, 7) sts on each shoulder.

Row 5: On right shoulder, bind off rem 5 (6, 7, 7, 7, 7) sts; on left shoulder, k to end – 5 (6, 7, 7, 7, 7) sts rem on left shoulder.

Bind off rem 5 (6, 7, 7, 7, 7) left shoulder sts.

LEFT FRONT

Cast on 48 (52, 58, 64, 68, 74) sts.

Beg with a WS row, work in Twisted Rib pattern for 5 rows.

Beg with a RS (knit) row, work in St st until piece measures about 12 in. (30.5 cm) from beg, end with a WS row as the last row you work.

Shape Armhole

Row 1 (RS): Bind off 3 (4, 4, 5, 6, 7) sts, k to end of row – 45 (48, 54, 59, 62, 67) sts.

Row 2: Purl.

Row 3: Bind off 2 (3, 3, 4, 5, 6) sts, k to end of row – 43 (45, 51, 55, 57, 61) sts.

Row 4: Purl.

Row 5: Bind off 2 (2, 2, 3, 4, 5) sts, k to end of row – 41 (43, 49, 52, 53, 56) sts.

Rows 6 and 7: Rep Rows 4 and 5 – 39 (41, 47, 49, 49, 51) sts in Row 7.

Row 8: Purl.

Row 9: Bind off 1 (1, 2, 2, 2, 2) sts, k to end of row – 38 (40, 45, 47, 47, 49) sts.

Rows 10 and 11: Rep Rows 8 and 9 – 37 (39, 43, 45, 45, 47) sts in Row 11.

Work even in St st until armhole measures about 6 (6 1/2, 7, 7 1/2, 8, 8 1/2) in. (15 (16.5, 18, 19, 20.5, 21.5) cm) from beg, end with a RS row as the last row you work.

Shape Neck

Row 1 (WS): Bind off 7 (6, 7, 7, 7, 7) sts, p to end of row – 30 (33, 36, 38, 38, 40) sts.

Row 2: Knit.

Row 3: Bind off 5 (5, 5, 6, 6, 6) sts, p to end of row – 25 (28, 31, 32, 32, 34) sts.

Row 4: Knit.

Row 5: Bind off 4 (4, 4, 5, 5, 5) sts, p to end of row – 21 (24, 27, 27, 27, 29) sts.

Row 6: Knit.

Row 7: Bind off 3 (3, 3, 3, 3, 4) sts, p to end of row – 18 (21, 24, 24, 24, 25) sts.

Row 8: Knit.

Row 9: Bind off 2 (2, 2, 2, 2, 3) sts, p to end of row – 16 (19, 22, 22, 22, 22) sts.

Row 10: Knit.

Row 11: Bind off 1 st, p to end of row – 15 (18, 21, 21, 21, 21) sts.

For thousands of free patterns, visit our website www.LionBrand.com

To order visit our website www.lionbrand.com or call: (800) 258-YARN (9276) any time!

Copyright ©1998-2021 Lion Brand Yarn Company, all rights reserved. No pattern or other material may be reproduced -- mechanically, electronically, or by any other means, including photocopying - without written permission of Lion Brand Yarn Company.

Work even in St st until armhole measures about 7 1/2 (8, 8 1/2, 9, 9 1/2, 10) in. (19 (20.5, 21.5, 23, 24, 25.5) cm) from beg, end with a WS row as the last row you work.

Shape Shoulder

Row 1 (RS): Bind off 5 (6, 7, 7, 7, 7) sts, k to end of row – 10 (12, 14, 14, 14, 14) sts.

Row 2: Purl.

Row 3: Bind off 5 (6, 7, 7, 7, 7) sts, k to end of row – 5 (6, 7, 7, 7, 7) sts.

Row 4: Purl.

Bind off remaining sts.

RIGHT FRONT

Cast on 48 (52, 58, 64, 68, 74) sts.

Beg with a WS row, work in Twisted Rib pattern for 5 rows.

Beg with a RS (knit) row, work in St st until piece measures about 12 in. (30.5 cm) from beg, end with a RS row as the last row you work.

Shape Armhole

Row 1 (WS): Bind off 3 (4, 4, 5, 6, 7) sts, p to end of row – 45 (48, 54, 59, 62, 67) sts.

Row 2: Knit.

Row 3: Bind off 2 (3, 3, 4, 5, 6) sts, p to end of row – 43 (45, 51, 55, 57, 61) sts.

Row 4: Knit.

Row 5: Bind off 2 (2, 2, 3, 4, 5) sts, p to end of row – 41 (43, 49, 52, 53, 56) sts.

Rows 6 and 7: Rep Rows 4 and 5 – 39 (41, 47, 49, 49, 51) sts in Row 7.

Row 8: Knit.

Row 9: Bind off 1 (1, 2, 2, 2, 2) sts, p to end of row – 38 (40, 45, 47, 47, 49) sts.

Rows 10 and 11: Rep Rows 8 and 9 – 37 (39, 43, 45, 45, 47) sts in Row 11.

Work even in St st until armhole measures about 6 (6 1/2, 7, 7 1/2, 8, 8 1/2) in. (15 (16.5, 18, 19, 20.5, 21.5) cm) from beg, end with a WS row as the last row you work.

Shape Neck

Row 1 (RS): Bind off 7 (6, 7, 7, 7, 7) sts, k to end of row – 30 (33, 36, 38, 38, 40) sts.

Row 2: Purl.

Row 3: Bind off 5 (5, 5, 6, 6, 6) sts, k to end of row – 25 (28, 31, 32, 32, 34) sts.

Row 4: Purl.

Row 5: Bind off 4 (4, 4, 5, 5, 5) sts, k to end of row – 21 (24, 27, 27, 27, 29) sts.

Row 6: Purl.

Row 7: Bind off 3 (3, 3, 3, 3, 4) sts, k to end of row – 18 (21, 24, 24, 24, 25) sts.

Row 8: Purl.

Row 9: Bind off 2 (2, 2, 2, 2, 3) sts, k to end of row – 16 (19, 22, 22, 22, 22) sts.

Row 10: Purl.

Row 11: Bind off 1 st, k to end of row – 15 (18, 21, 21, 21, 21) sts.

For thousands of free patterns, visit our website www.LionBrand.com

To order visit our website www.lionbrand.com or call: (800) 258-YARN (9276) any time!

Copyright ©1998-2021 Lion Brand Yarn Company, all rights reserved. No pattern or other material may be reproduced -- mechanically, electronically, or by any other means, including photocopying - without written permission of Lion Brand Yarn Company.

Work even in St st until armhole measures about 7 1/2 (8, 8 1/2, 9, 9 1/2, 10) in. (19 (20.5, 21.5, 23, 24, 25.5) cm) from beg, end with a RS row as the last row you work.

Shape Shoulder

Row 1 (WS): Bind off 5 (6, 7, 7, 7, 7) sts, p to end of row – 10 (12, 14, 14, 14, 14) sts.

Row 2: Knit.

Row 3: Bind off 5 (6, 7, 7, 7, 7) sts, p to end of row – 5 (6, 7, 7, 7, 7) sts.

Row 4: Knit.

Bind off remaining sts.

SLEEVES (make 2)

Cast on 52 sts.

Beg with a WS row, work in Twisted Rib until piece measures about 2 1/2 in. (6.5 cm) from beg, end with a WS row as the last row you work.

Next Row (RS): Knit and increase 10 sts evenly spaced across row – 62 sts.

Next Row: Purl.

Next Row (RS): Sl 1 (selvedge st), work Row 1 of Sleeve pattern to last st, p1 (selvedge st).

*Continue in Sleeve pattern as established, slipping first st and purling last st of every row for selvedges, for 23 (13, 9, 7, 5, 5) more rows.

Increase Row (RS): Sl 1, M1P, work in Sleeve pattern as established to last st, M1P, p1 – 64 sts.**

As you move to the following section of instructions, continue in Sleeve pattern as established, slipping first st and purling last st of every row for selvedges, and work all increased (new) sts in Rev St st (p on RS, k on WS).

Rep from * to ** for 3 (6, 9, 11, 14, 17) more times – 70 (76, 82, 86, 92, 98) sts when all increases have been completed.

Work even in pattern as established until piece measures about 18 in. (45.5 cm) from beg, end with a WS row as the last row you work.

Shape Sleeve Cap

Next 2 Rows: Bind off 2 (3, 4, 4, 5, 6) sts, work in pattern as established to end of row – 66 (70, 74, 78, 82, 86) sts.

Next 4 Rows: Bind off 2 (2, 2, 3, 3, 3) sts, work in pattern as established to end of row – 58 (62, 66, 66, 70, 74) sts.

Decrease Row (RS): Sl 1, ssk, work in pattern as established to last 3 sts, k2tog, p1 – 56 (60, 64, 64, 68, 72) sts.

Next 3 Rows: Work even in pattern as established for 3 rows.

Next Row (RS): Rep Decrease Row – 54 (58, 62, 62, 66, 70) sts.

Next Row: Work even in pattern as established.

Rep last 6 rows until you have 42 sts remaining.

Next Row: K1, *k2tog; rep from * to last st, k1 – 22 sts.

Bind off all sts.

FINISHING

Sew shoulder seams.

Front Bands

From RS, pick up and k96 (98, 100, 104, 106, 108) sts evenly spaced along one front edge.

Next Row (WS): Knit.

Beg with a RS row, work in Twisted Rib for 12 rows.

Bind off using Tubular Bind-Off technique.

Rep along second front edge.

Neckband

From RS, pick up and k112 (116, 120, 130, 136, 146) sts evenly spaced around neck edge, including top edges of bands.

Next Row (WS): Knit.

Beg with a RS row, work in Twisted Rib for 12 rows.

Bind off using Tubular Bind-Off technique.

Block to measurements.

Sew in Sleeves. Sew side and Sleeve seams.

Weave in ends.

ABBREVIATIONS

beg = begin(ning)

k = knit

k2tog = knit 2 stitches together

p = purl

p2tog = purl 2 stitches together

rem = remain(ing)

rep = repeat

rnd(s) = round(s)

RS = right side

sl = slip

st(s) = stitch(es)

St st = Stockinette stitch

tbl = through back loop

WS = wrong side

Every effort has been made to produce accurate and complete instructions. We cannot be responsible for variance of individual knitters or crocheters, human error, or typographical mistakes.

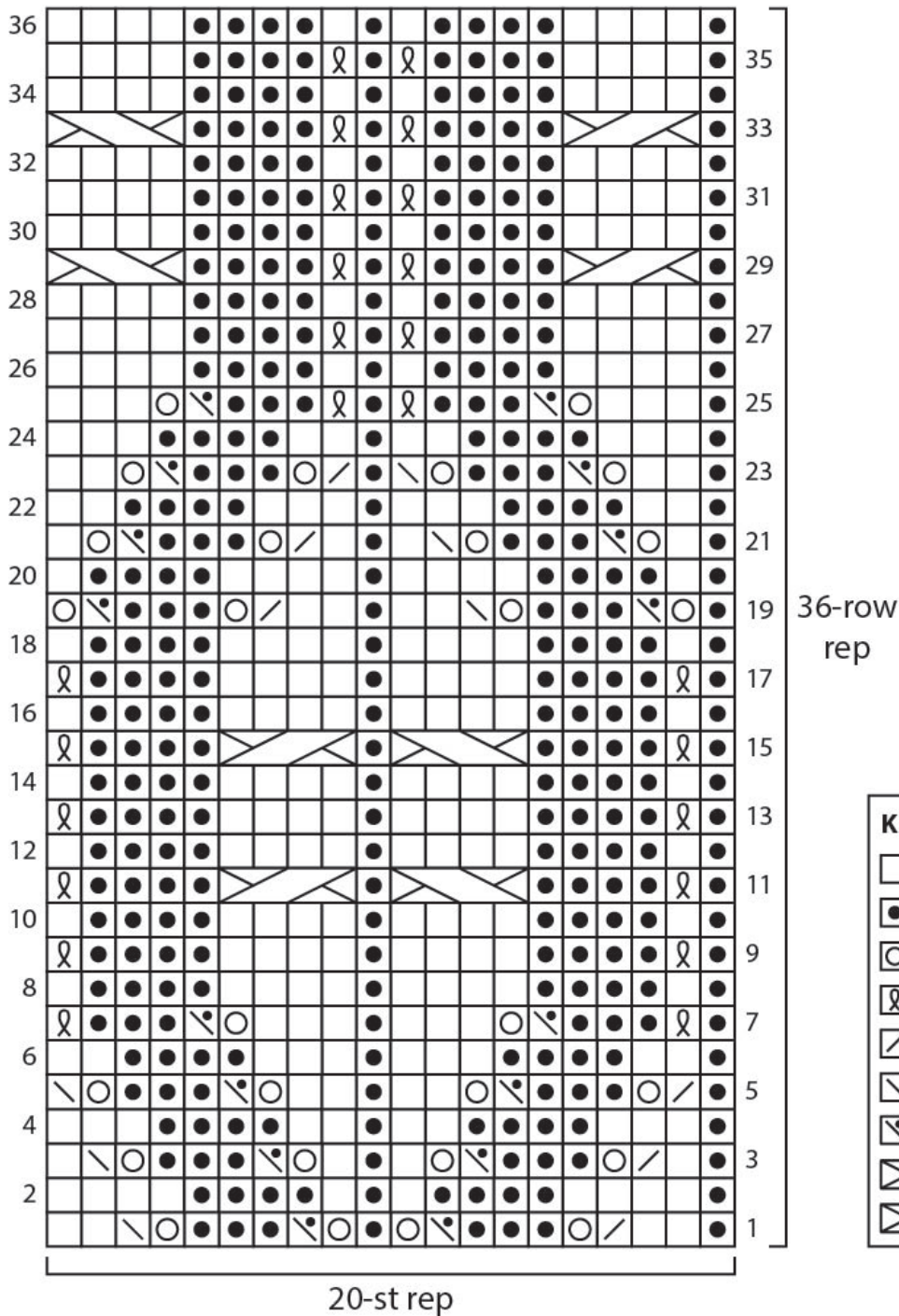
©2021 Lion Brand Yarn Company, all rights reserved.

For thousands of free patterns, visit our website www.LionBrand.com

To order visit our website www.lionbrand.com or call: (800) 258-YARN (9276) any time!

Copyright ©1998-2021 Lion Brand Yarn Company, all rights reserved. No pattern or other material may be reproduced -- mechanically, electronically, or by any other means, including photocopying - without written permission of Lion Brand Yarn Company.

Sleeve Pattern



KEY

- knit on RS, purl on WS
- purl on RS, knit on WS
- yarn over
- k1 tbl on RS, p1 tbl on WS
- k2tog (knit 2 stitches together)
- ssk (slip, slip, knit)
- p2tog (purl 2 stitches together)
- 2/2 LC (2 over 2 left cross)
- 2/2 RC (2 over 2 right cross)

For thousands of free patterns, visit our website www.LionBrand.com

To order visit our website www.lionbrand.com or call: (800) 258-YARN (9276) any time!

Copyright ©1998-2021 Lion Brand Yarn Company, all rights reserved. No pattern or other material may be reproduced -- mechanically, electronically, or by any other means, including photocopying - without written permission of Lion Brand Yarn Company.

