



Free Crochet Pattern

LION BRAND® LB COLLECTION® BABY ALPACA

SWEETHEART BEANIE

Pattern Number: M20388 BA



SKILL LEVEL – INTERMEDIATE

SIZES

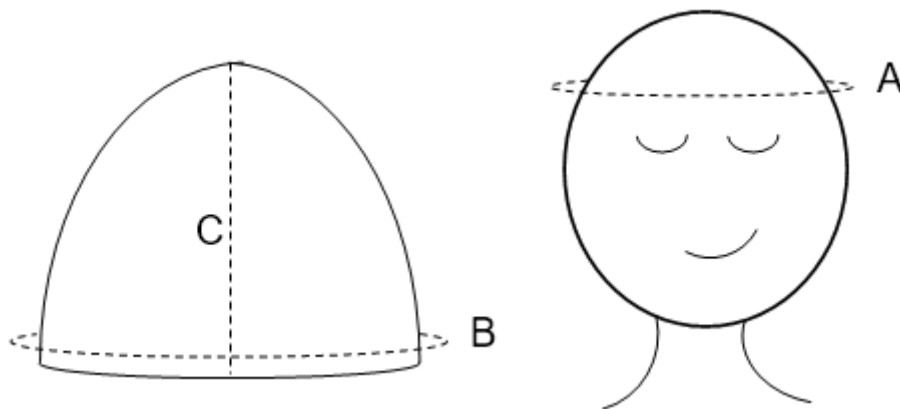
Baby (Child/Teen, Adult)

Finished Circumference About 14 (18, 21) in. (35.5 (45.5, 53.5) cm)

Note: Pattern is written for smallest size with changes for larger sizes in parentheses. When only one number is given, it applies to all sizes. To follow pattern more easily, circle all numbers pertaining to your size before beginning.

FINISHED MEASUREMENTS

- A. **Head Circumference (A):** 14-16 (18-20, 21-23) in. (36-41 (46-51, 53-58) cm)
- B. **Beanie Circumference (B):** 14 (18, 21) in. (35.5 (45.5, 53.5) cm)
- C. **Length (C)**
 - Fitted: 5 1/2 (7 1/2, 8 1/2) in. (14 (19, 21.5) cm)
 - Slouchy: 7 1/2 (10, 11) in. (19 (25.5, 28) cm)



MATERIALS

- LION BRAND® LB COLLECTION® BABY ALPACA (Art. #488)
#098 Natural
 - Fitted Length:** 1 (2, 2) ball(s)
 - Slouchy Length:** 2 (2, 3) balls
- LION BRAND® Pom-Pom Maker
- LION BRAND® large-eyed blunt needle

ADDITIONAL MATERIALS

Crochet hook size D-3 (3.25 mm)

Crochet hook size G-6 (4 mm)



For thousands of free patterns, visit our website www.LionBrand.com

To order visit our website www.lionbrand.com or call: (800) 258-YARN (9276) any time!

Copyright ©1998-2021 Lion Brand Yarn Company, all rights reserved. No pattern or other material may be reproduced -- mechanically, electronically, or by any other means, including photocopying - without written permission of Lion Brand Yarn Company.

GAUGE

19 sc + 19 rows = about 4 in. (10 cm).

To make a gauge swatch

With larger hook, ch 20.

Row 1: Sc-blo in 2nd ch from hook and in each ch until 1 ch rem, sc in last ch, turn – 19 sc.

Row 2: Ch 1, sc in first st, sc-blo in each st until 1 st rem, sc in last st, turn.

Row 3: Ch 1, sc in first st, sc-flo in each st until 1 st rem, sc in last st, turn.

Rows 4-19: Rep Rows 2 and 3 for 8 more times.

Note: Since this hat is worked side to side, it is more important to meet the gauge sts rather than rows (the width instead of the height) since you can always add or deduct rows.

BE SURE TO CHECK YOUR GAUGE.

STITCH EXPLANATIONS

Fsc (Foundation single crochet)

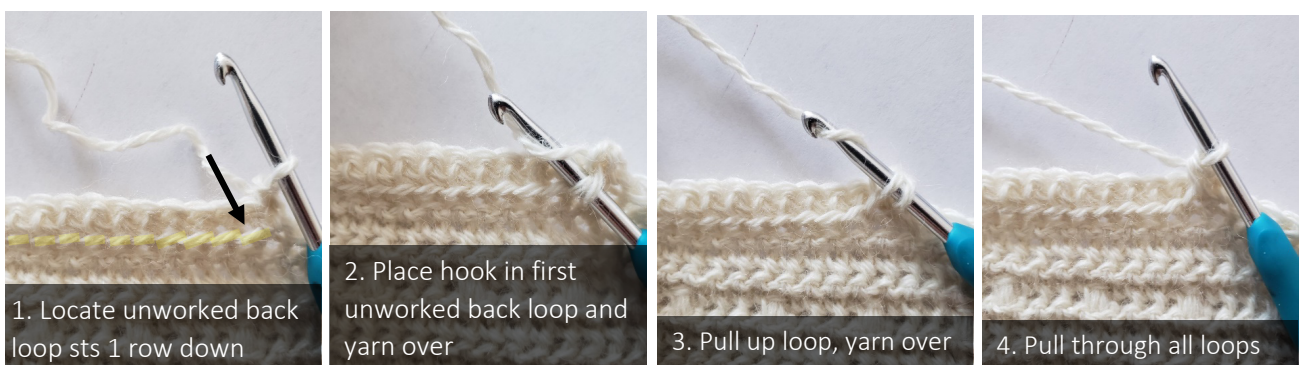
1. Ch 2 (counts as first Fsc), insert hook in 2nd ch from hook and draw up a loop; yarn over and draw through one loop on hook (the “chain”); yarn over and draw through 2 loops on hook (the “single crochet”).
2. Insert hook into the “chain” of the stitch just made and draw up a loop; yarn over and draw through one loop on hook (the “chain”), yarn over and draw through 2 loops on hook (the “single crochet”); rep from * the total number of times indicated.

Puff Stitch (puff): Yarn over, place hook into both the front and back loops of next st, yarn over, pull up a loop (3 loops on hook), *yarn over, place hook into same st, yarn over and pull up a loop (5 loops on hook); rep from * 2 more times (9 loops on hook), yarn over and pull through all loops except 1 (2 loops rem on hook), yarn over, pull through last 2 loops to close the st.

sc-blo (single crochet in back loop only) Insert hook in back loop only of indicated st and draw up a loop, yarn over and draw through 2 loops on hook.

sc-flo (single crochet in front loop only) Insert hook in front loop only of indicated st and draw up a loop, yarn over and draw through 2 loops on hook.

(Modified) Single Crochet Ridge Stitch (sc ridge st): Place hook into the unworked back loop 1 row down, yarn over, pull up a loop, yarn over, pull through both loops (See next photo tutorial.)



NOTE

Beanie is worked from side to side and then seamed.

BEANIE

With larger hook

Fitted Length: Fsc 15 (27, 31) turn

Slouchy Length: Fsc 27 (39, 43) turn

Note: The number of Fsc will be your st count for EVERY row.

Row 1: Ch 1 (never counts as st), sc in first st, sc-blo in each st until 1 st rem, sc in last st, turn.

Row 2: Ch 1, sc in first st, sc-flo in each st until 1 st rem, sc in last st, turn.

Row 3: Ch 1, sc in first st, sc-blo in each st until 1 st rem, sc in last st, turn.

Row 4: Ch 1, sc in first st, sc-flo in each st until 1 st rem, sc in last st, turn.

Row 5: Ch 1, sc in first st, sc-blo in each st until 1 st rem, sc in last st, turn.

Row 6: Ch 1, sc in first st, sc-flo in next 2 sts, puff in next st, *sc-flo in next 3 sts, puff in next st; rep from * until 3 sts rem, sc-flo in next 2 sts, sc in last st, turn.

Rows 7-10: Rep Rows 3 and 4 twice.

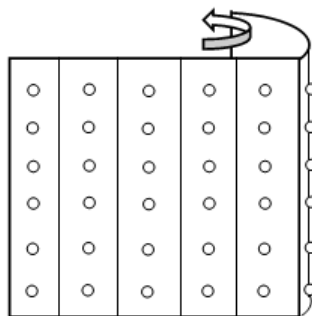
Row 11 (Set up row): Ch 1, sc in first st, sc-flo in each st until 1 st rem, sc in last st, turn.

Note: You're about to work the modified sc ridge st. See Special Stitches for instructions and photo tutorial.

Row 12: Ch 1, sc in first st, modified sc ridge st until 1 st rem, sc in last st, turn.

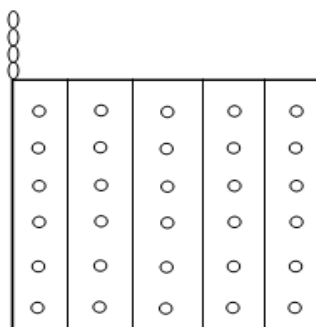
Rep Rows 1-12 (ending with a Row 12 repeat) until piece measures about 1-2 in. (2.5-5 cm) less than head circumference or about 14 (18, 21) in. (35.5 (45, 53.5) cm) from beginning. Do not fasten off.

From RS, fold beanie in half (See next diagram) and sc first and last row together. Do not fasten off.



Ribbing

Change to smaller hook, ch 16, and turn your work to its side (See next diagram).



For thousands of free patterns, visit our website www.LionBrand.com

To order visit our website www.lionbrand.com or call: (800) 258-YARN (9276) any time!

Copyright ©1998-2021 Lion Brand Yarn Company, all rights reserved. No pattern or other material may be reproduced -- mechanically, electronically, or by any other means, including photocopying - without written permission of Lion Brand Yarn Company.

Row 1: Sc-blo in 2nd ch from hook, sc-blo in each ch down until you reach the panel, sl st across body 2 times, turn – you will have 15 sts in this row.

Row 2: Sc-blo back up ribbing until 1 st rem, sc in last st, turn.

Row 3: Ch 1, sc in first st, sc-blo in each st down until you reach panel, sl st across panel 2 times, turn.

Rep Rows 2 and 3 around.

From WS, sl st first and last row of ribbing together.

Fasten off.

FINISHING

Thread blunt needle with a length of yarn, then weave yarn in and out of the rows at top of Beanie. Pull to close and knot. A small hole will remain at top of Beanie.

Following package instructions, make a pom-pom and tie to top of Beanie.

Weave in yarn ends.

ABBREVIATIONS

ch = chain

rem = remain(ing)(s)

rep = repeat

RS = right side

sc = single crochet

sl st = slip stitch

st(s) = stitch(es)

WS = wrong side

Every effort has been made to produce accurate and complete instructions. We cannot be responsible for variance of individual knitters or crocheters, human error, or typographical mistakes.

©2021 Lion Brand Yarn Company, all rights reserved.

For thousands of free patterns, visit our website www.LionBrand.com

To order visit our website www.lionbrand.com or call: (800) 258-YARN (9276) any time!

Copyright ©1998-2021 Lion Brand Yarn Company, all rights reserved. No pattern or other material may be reproduced -- mechanically, electronically, or by any other means, including photocopying - without written permission of Lion Brand Yarn Company.