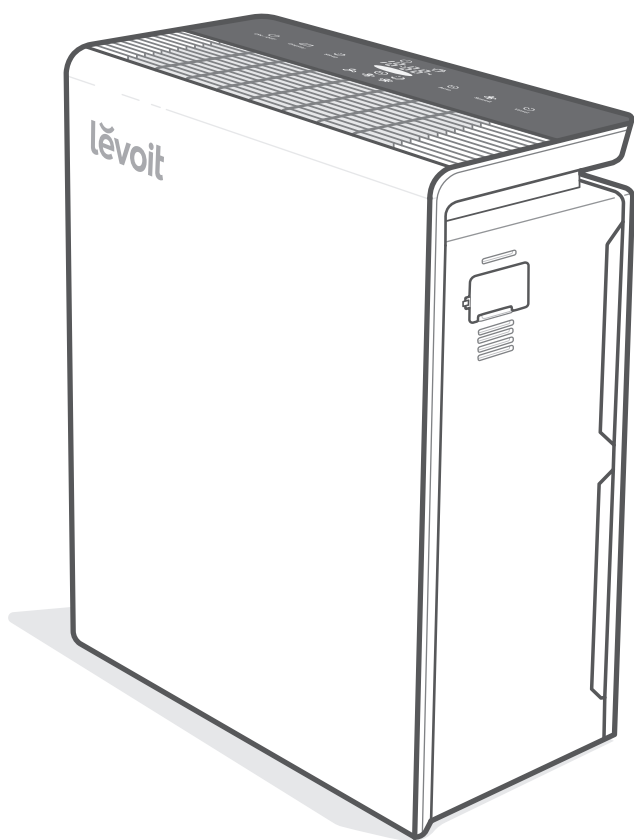




USER MANUAL

## True HEPA Air Purifier

**Model:** LV-PUR131



**Questions or Concerns?**

[support.eu@levoit.com](mailto:support.eu@levoit.com)

Thank you for purchasing the  
**LV-PUR131 TRUE  
HEPA AIR PURIFIER  
BY LEVOIT.**

If you have any questions or concerns, please  
reach out to us at [support.eu@levoit.com](mailto:support.eu@levoit.com).  
We hope you enjoy your new air purifier!

### **Share the Levoit Love**

Find **@LevoitUK** on social media for wellness  
+ style inspiration. We make every space  
mindful and chic.

## Table of Contents

Package Contents	3
Specifications	3
Safety Information	4
Getting to Know Your Air Purifier	5
Controls	6
Getting Started	7
Using Your Purifier	8
About the Filters	9
Keeping Things Clean	10
Troubleshooting	13
Warranty Information	15
Customer Support	15

## Package Contents

- 1 x Air Purifier
- 1 x Activated Carbon Filter (Pre-Installed)
- 1 x Preliminary/True HEPA Combination Filter (Pre-Installed)
- 1 x User Manual

## Specifications

Power Supply	AC 220V–240V, 50/60Hz
Rated Power	40W
Effective Range	$\leq 48 \text{ m}^2$ / $516 \text{ ft}^2$
Operating Conditions	-10°–40°C / 14°–104°F
Noise Level	23–52dB
Clean Air Delivery Rate (CADR)	230 m <sup>3</sup> /h / 135 CFM
Standby Power	< 0.8W
Dimensions	371 x 18.3 x 47 cm / 14.6 x 7.2 x 18.5 in
Weight	5.21 kg / 11.49 lb

# SAFETY INFORMATION

To reduce the risk of fire, electric shock, or other injury, follow all instructions and safety guidelines.

## General Safety

- **Only** use your air purifier as described in this manual.
- **Do not** use your air purifier outdoors.
- Keep your air purifier away from water, and wet or damp areas. **Never** place in water or liquid.
- Keep your air purifier away from heat sources.
- **Do not** use where combustible gases, vapours, metallic dust, aerosol (spray) products, or fumes from industrial oil are present.
- Keep 1.5 m / 5 ft away from where oxygen is being administered.
- Supervise children when they are near the air purifier.
- **Do not** place anything into any opening on the air purifier, unless directed by the manual.
- **Do not** sit or place heavy objects on the air purifier.
- Keep the inside of the air purifier dry. To prevent moisture buildup, avoid placing in rooms with major temperature changes or underneath air conditioners.
- **Always** unplug your air purifier before servicing (such as when changing filters).
- **Do not** use your air purifier if it is damaged or not working correctly, or if the cord or plug is damaged. **Do not** try to repair it yourself. Contact **Customer Support** (see page 15).
- **WARNING: Do not** use this air purifier with solid-state speed controls (such as a dimmer switch).
- Not for commercial use. Household use **only**.

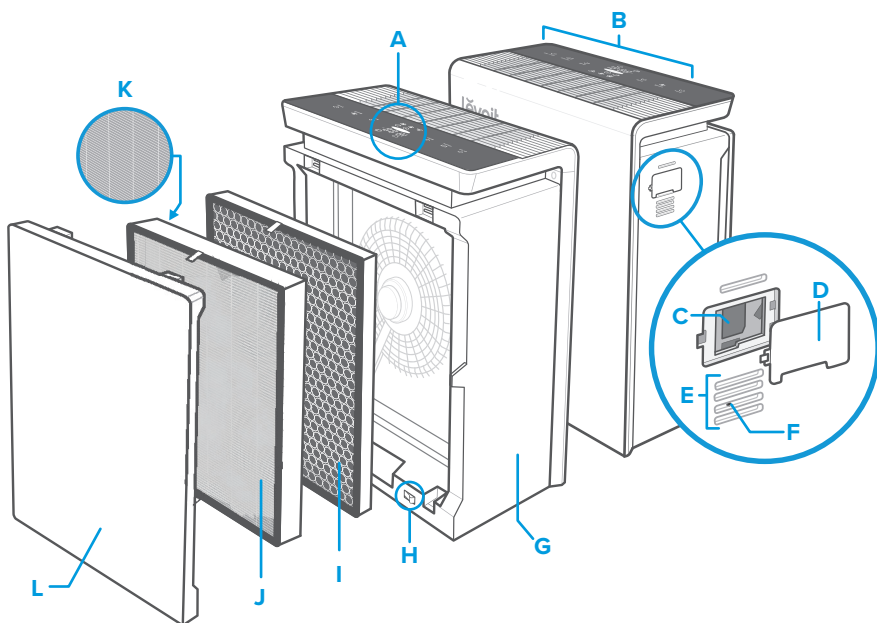
## Power and Cord

- Keep air purifier near the outlet it is plugged into.
- Never place the cord near any heat source.
- **Do not** cover the cord with a rug, carpet, or other covering. **Do not** place the cord under furniture or appliances.
- Keep the cord out of areas where people walk often. Place the cord where it will not be tripped over.

# READ AND SAVE THESE INSTRUCTIONS

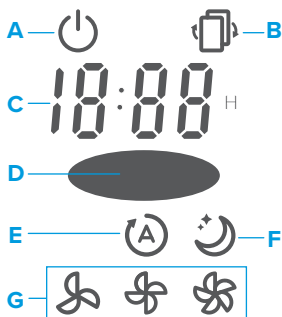
# GETTING TO KNOW YOUR AIR PURIFIER

- |                        |                                  |                            |
|------------------------|----------------------------------|----------------------------|
| A. LED Display         | E. Button Vent                   | I. Activated Carbon Filter |
| B. Touch-Control Panel | F. Filter Indicator Reset Button | J. Fine Preliminary Filter |
| C. Dust Sensor Lens    | G. Housing                       | K. True HEPA Filter        |
| D. Dust Sensor Cover   | H. Safety Switch                 | L. Back Cover              |



## LED DISPLAY

- |                           |
|---------------------------|
| A. On/Off Indicator       |
| B. Check Filter Indicator |
| C. Timer Display          |
| D. Air Quality Indicator  |
| E. Auto Mode              |
| F. Sleep Mode             |
| G. Fan Speed              |



# CONTROLS




## On/Off Button

- Turns the air purifier on or off.



## Display Off Button

- Turns the display off.
- Press any button (except ) to turn the display back on.



## Sleep Mode Button

- Turns Sleep Mode on or off (see page 8).



## Auto Button

- Turns Auto Mode on or off (see page 8).



## Fan Speed Button

- Cycles through fan speeds: low, medium, and high.
- The fan speed cannot be changed during Auto or Sleep Modes.



## Timer Button

- Sets or cancels a timer (see page 8).

## Air Quality Indicator

- Displays air quality using the automatic sensor inside the air purifier.
- The air purifier may take up to 1 minute to detect air quality.

Air Quality Indicator Chart	
Colour	Air Quality
	Bad
	Moderate
	Good
	Very Good

# GETTING STARTED

1. Open the back cover of the air purifier and remove both filters from their plastic packaging. *[Figure 1.1]*
2. First, place the Activated Carbon Filter back into the air purifier. Then, place the Preliminary/True HEPA Combination Filter. Make sure the pull tabs on both filters are facing out. *[Figure 1.2]*
3. Replace the back cover by lining up the cover's feet with the matching slots on the bottom of the housing. Make sure that the triangular piece at the bottom of the cover is touching the safety switch. *[Figure 1.3]*
4. Push the cover closed.
5. Place the air purifier on a hard, flat surface. Leave 38 cm / 15 in of clearance on all sides of the air purifier. *[Figure 1.4]*

**Note:** Do not remove the foam piece attached to the dust sensor cover unless instructed by **Customer Support**. *[Figure 1.5]*

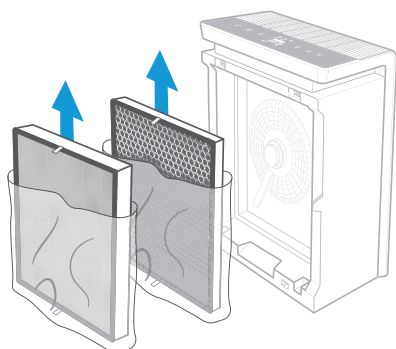


Figure 1.1

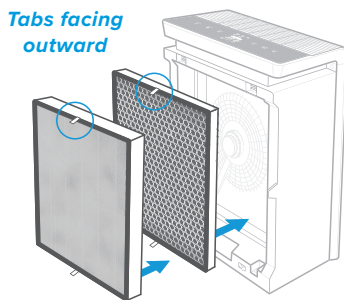


Figure 1.2

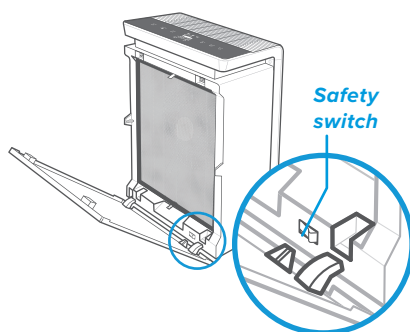


Figure 1.3

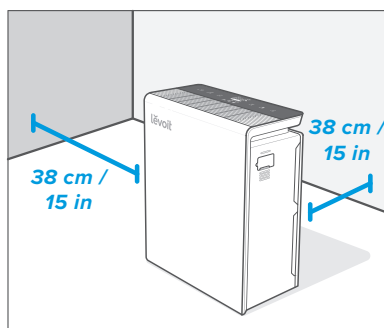


Figure 1.4

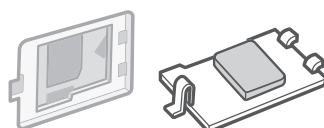




Figure 1.5

# USING YOUR PURIFIER

## General Operation




1. Press  to turn the air purifier on/off. The air purifier fan will start automatically at low speed.
2. Optionally, press  to increase fan speed. You can also select Auto or Sleep Mode, or set a timer.

**Note:**

- For best results, run the air purifier at maximum speed for 15-20 minutes before using a lower speed or Auto Mode.
- To effectively clean air, keep windows closed while the air purifier is operating.




## Sleep Mode

Sleep Mode uses the lowest possible fan speed to create a quiet environment.

- Press  to turn Sleep Mode on/off.
- Pressing  or  will also exit Sleep Mode.




## Timer





You can set a timer between 1 and 12 hours.

- Press  repeatedly to choose a time in increments of 1 hour. When you stop pressing , the display will flash 3 times and the timer will start.
- The air purifier will automatically power off once the timer is finished.
- To cancel a timer, press  repeatedly until the display reads “-:-” and flashes 3 times.

## Auto Mode

Auto Mode uses the sensor inside the air purifier to adjust the fan speed automatically based on air quality. For example, if the air quality is bad, the fan will automatically be set to high speed. See chart.

- Press  to turn Auto Mode on/off.
- Pressing  or  will also exit Auto Mode.

Auto Mode Chart		
Colour	Air Quality	Fan Speed
	Bad	High
	Moderate	Medium
	Good	Low
	Very Good	Sleep Mode

## Memory Function

When the air purifier is plugged in, it will remember its programmed settings when turned off, and will resume these settings when turned back on.

## Automatic Shutoff

As a safety feature, the air purifier will automatically turn off if the back cover is removed.



# ABOUT THE FILTERS

This air purifier uses a 3-stage filtration system to purify air.

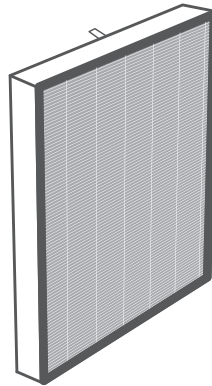
## A. Fine Preliminary Filter

- Captures large particles such as dust, lint, fibres, hair, and pet fur.
- Maximizes the life of the True HEPA Filter by protecting it.



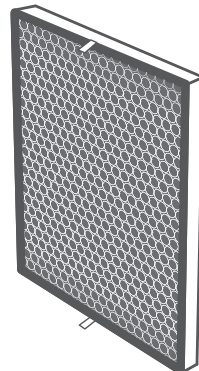
## B. True HEPA Filter

- Removes at least 99.97% of airborne particles 0.3 micrometres ( $\mu\text{m}$ ) in diameter.
- Filters small particles such as mould spores, tiny dust particles, parts of smoke, and allergens such as pollen, dander, and mites.



## C. High-Efficiency Activated Carbon Filter

- Physically adsorbs smoke, odours, and fumes.
- Filters compounds such as formaldehyde, benzene, ammonia, hydrogen sulfide, and volatile organic compounds (VOCs).



# KEEPING THINGS CLEAN

## Cleaning the Air Purifier

Wipe the outside of the air purifier with a dry cloth. **Do not** clean with water or any other liquid, to avoid risk of electric shock.

## Check Filter Indicator

The Check Filter Indicator will light up as a reminder to check the air filters. Depending on how often you use the air purifier, the indicator should turn on within 6–8 months. You may not need to change your filters yet, but you need to check them when the indicator light turns on.

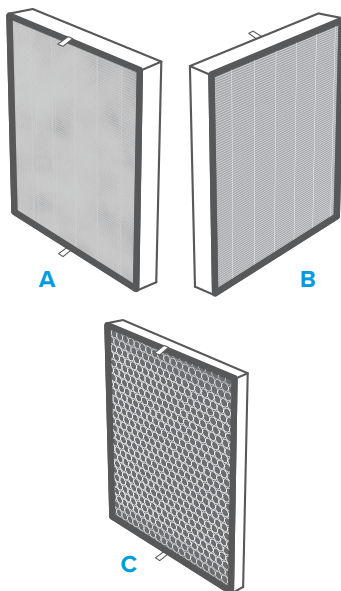
Reset the Check Filter Indicator by pressing the reset button inside the vent on the side of the air purifier (see page 12).

## Cleaning the Filters

- A. The Fine Preliminary Filter should be cleaned once a month to increase efficiency and extend the life of your filter. Clean the Fine Preliminary Filter using a brush or vacuum hose to remove hair, dust, and large particles.
- B. **Do not** clean the True HEPA Filter. Fine dust or bacteria may be released back into the air if cleaning is attempted. **Only** clean the Fine Preliminary Filter.
- C. The Activated Carbon Filter does not require cleaning.

## Replacing the Filters

1. Unplug the air purifier and remove the back cover.
2. Remove the old filters and properly dispose of them.
3. Unwrap the new filters. Place the Activated Carbon Filter inside the housing. Make sure the pull tabs are facing out.
4. Install the Preliminary/True HEPA Combination Filter into the housing. Make sure the pull tabs are facing out.
5. Replace the back cover. The air purifier will not power on unless the back cover is replaced correctly.
6. Press the Filter Indicator Reset Button inside the vent (see page 12).



### When Should I Replace the Filters?

The filters should be replaced every 6–8 months. You may need to replace your filters sooner or later depending on how often you use your air purifier. Using your air purifier in an environment with relatively high pollution may mean you will need to change the filters more often (even if the Check Filter Indicator is off).

You may need to replace your filters if you notice:

- Increased noise when the air purifier is on
- Decreased airflow
- Unusual odours
- Visibly clogged filters

To maintain the performance of your air purifier, **only** use official Levoit filters. To buy replacement filters, go to Amazon and search **B077GQ6PW8**.

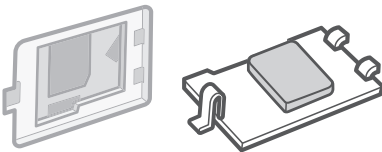


Figure 2.3

### Cleaning the Dust Sensor Lens

1. Turn off and unplug the air purifier.
2. Open the dust sensor cover. [\[Figure 2.1\]](#)
3. Use a cotton swab, dipped in water, to clean the dust sensor lens. [\[Figure 2.2\]](#)
4. Wipe the lens dry with a dry cotton swab.

**Note:** Do not remove the foam piece attached to the dust sensor cover unless instructed by **Customer Support**. [\[Figure 2.3\]](#)

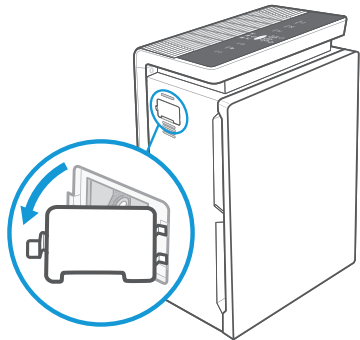


Figure 2.1

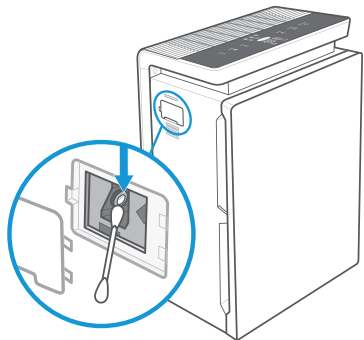


Figure 2.2

## Resetting the Check Filter Indicator

Reset the Check Filter Indicator after changing the filters.

1. Plug in the air purifier and turn it on.
2. Locate the button vent on the side of the air purifier. *[Figure 3.1]*
3. Use a paperclip, small flathead screwdriver, or other small object to press the black Filter Indicator Reset Button inside the vent. *[Figure 3.1]*
4. The Check Filter Indicator will turn off, indicating that the reset is complete.

## Storage

If not using the air purifier for an extended period of time, wrap the filter in plastic packaging and store in a dry place to avoid moisture damage.

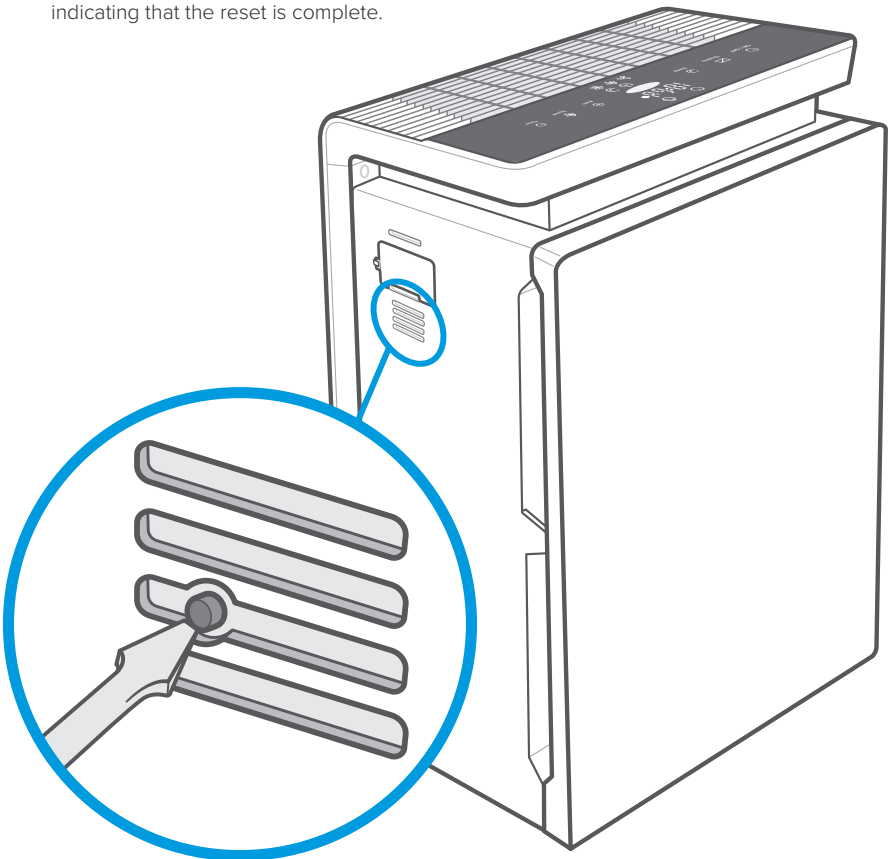




Figure 3.1

## TROUBLESHOOTING

Problem	Possible Solution
Air purifier will not turn on or respond to button controls.	Plug in the air purifier.
	Check to see if the power cord is damaged. If so, stop using the air purifier and contact <b>Customer Support</b> (see page 15).
	Properly place the filter cover on the air purifier, so that the safety switch is activated (see page 7).
	Plug the air purifier into a different outlet.
	Air purifier is malfunctioning. Contact <b>Customer Support</b> (see page 15).
The air quality indicator always stays red, and the air purifier is running on high speed.	Clean the dust sensor lens (see page 11).
The air quality indicator always stays blue, even though air quality is poor.	
Air purifier makes an unusual noise while the fan is on.	Make sure the filters are removed from their packaging and properly in place (see page 7).
	Replace the filters (see page 10).
	The air purifier may be damaged, or a foreign object may be inside. Stop using the air purifier and contact <b>Customer Support</b> (see page 15). <b>Do not</b> try to repair the air purifier.
Airflow is significantly reduced.	Make sure the filters are removed from their packaging.
	Press  to increase the fan speed.
	Leave 38 cm / 15 in of clearance on all sides of the air purifier.
	Replace the filters (see page 10).
Check Filter Indicator is still on illuminated after replacing the air filters.	Reset the Check Filter Indicator (see page 12).

## TROUBLESHOOTING (CONT.)

Problem	Possible Solution
Poor air purification quality.	Press  to increase the fan speed.
	Make sure no objects are blocking the top or sides of the air purifier (the inlet or outlet).
	Make sure the filters are removed from their packaging and properly in place (see page 7).
	Close doors and windows while running the air purifier.
	Make sure the room is smaller than 48 m <sup>2</sup> / 516 ft <sup>2</sup> . The air purifier may not be as effective in larger rooms.
	Clean the dust sensor lens (see page 11).
	Replace the filters (see page 10).
The Check Filter Indicator has not turned on within 8 months.	The Check Filter Indicator is a reminder for you to check the filters and will light up based on how long the air purifier has been used (see page 11). If you don't use your air purifier often, the indicator will take longer to turn on.
The Check Filter Indicator turned on before 6 months.	The Check Filter Indicator is a reminder for you to check the filters and will light up based on how long the air purifier has been used (see page 11). If you run your air purifier frequently, the indicator will turn on sooner.
Air purifier randomly turns off.	Air purifier is malfunctioning. Stop using the air purifier and contact <b>Customer Support</b> (see page 15).

If your problem is not listed, please contact **Customer Support** (see page 15).

# WARRANTY INFORMATION

## Terms & Policy

Arovast Corporation warrants all products to be of the highest quality in material, craftsmanship and service for a minimum of 2 years, effective from the date of purchase. Warranty lengths may vary between product categories. Should you encounter any issues or have any questions regarding your new product, feel free to contact our helpful Customer Support Team.

# CUSTOMER SUPPORT

## **Arovast Corporation**

1202 N. Miller St., Suite A  
Anaheim, CA 92806  
USA

**Email:** [support.eu@levoit.com](mailto:support.eu@levoit.com)

\*Please have your order invoice and order ID ready before contacting Customer Support.

# lëvoit

levoit.com

Connect with us @LevoitUK

