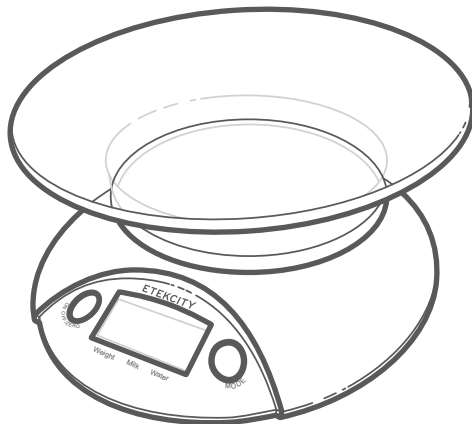


Digital Kitchen Scale

Model: EK3551

User Manual



Thank you for purchasing the **Digital Kitchen Scale**
by Etekcity.

If you have any questions or concerns, please
reach out to our helpful Customer Support Team
at **support@etekcity.com**. We hope you enjoy your
new kitchen scale!

Table of Contents

| | |
|------------------------------|----|
| Package Contents | 3 |
| Specifications | 3 |
| Important Safety Information | 4 |
| Function Diagram | 5 |
| Using Your Scale | 7 |
| Maintenance | 10 |
| Troubleshooting | 11 |
| Warranty Information | 12 |
| Customer Support | 13 |

Package Contents

| |
|--|
| 1 x Digital Kitchen Scale |
| 1 x Plastic Bowl |
| 2 x 1.5V AAA Batteries (Pre-Installed) |
| 1 x Quick Start Guide |

Specifications

| | |
|------------------------|---|
| Weight Capacity | 176 oz / 11 lb / 5000 g / 5000 mL |
| Increments | 0.1 oz / 1 g / 1 mL |
| Weight Units | oz / lb:oz / fl'oz (water/milk) / g / mL (water/milk) |
| Auto-Off | 120 seconds |
| Battery | 2 x 1.5V AAA batteries (pre-installed) |

READ AND SAVE THESE INSTRUCTIONS

Safety Information

To avoid damage to this scale, please read and follow all instructions and safety guidelines in this manual.

Scale

- **Do not** exceed the 11 lb / 5000 g weight capacity, as this will damage the scale. An error indicator will appear on the LCD display if the limit is exceeded.
- **Do not** immerse the scale in water or any liquid. If liquid is spilled on the digital display or buttons, immediately wipe the scale dry with a soft cloth to avoid internal damage.
- Handle with care. This scale is not intended for commercial or heavy-duty use.
- Keep the scale in a cool, dry place. Avoid

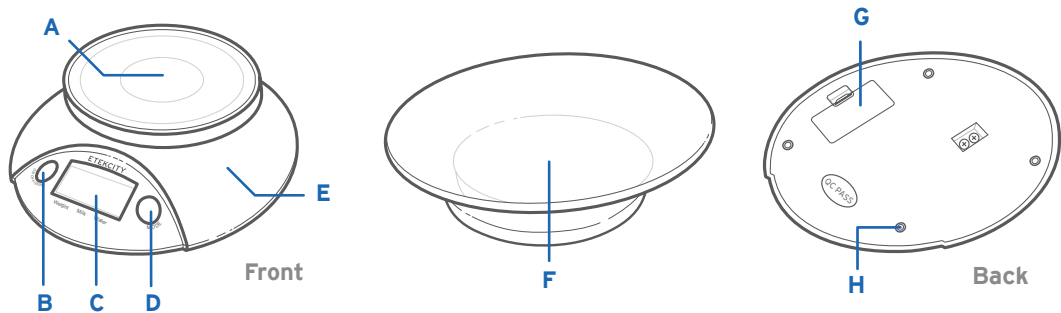
exposure to damp environments or extreme temperatures.

- Household use **only**.

Batteries

- **Do not** mix new and old batteries.
- If the low battery indicator (“Lo”) appears on the display, replace the batteries.
- If the scale is not in use for an extended period of time, remove the batteries to conserve battery life and extend the lifetime of the scale.

Function Diagram

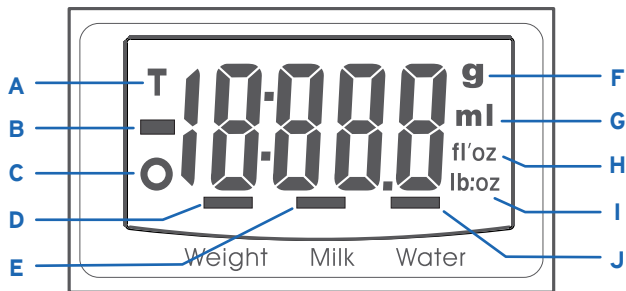


- A.** Weighing Surface
- B.** On/Off/Zero Button
- C.** LCD Screen
- D.** Mode Button

- E.** Digital Scale
- F.** Bowl
- G.** Battery Compartment
- H.** Anti-Skid Pads

LCD Screen

- A. Tare Function Active
- B. Negative Weight Value
- C. Zero Weight
- D. Weight Mode
- E. Milk Volume Mode
- F. Grams
- G. Milliliters
- H. Fluid Ounces
- I. Pounds & Ounces
- J. Water Volume Mode



Using Your Scale

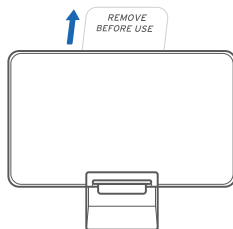
Before First Use

Remove the plastic insulator from the battery compartment on the bottom of the scale. [\[Figure 1.1\]](#)

Switching Weight Units

To switch between metric units (g, mL) and imperial units (oz, lb:oz, fl'oz), turn on the scale, then press the **Mode** button.

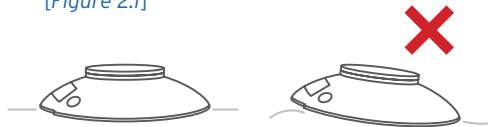
Note: For accurate results, place the scale on a hard, dry, flat surface, and keep the scale away from dirt, dust, vibrations, wind, air currents, and electromagnetic interference.



[Figure 1.1](#)

Measurement

1. Place the scale on a hard, flat surface. [\[Figure 2.1\]](#)



[Figure 2.1](#)

Operation (cont.)

2. Press **ON/OFF** to turn on the scale. Make sure the scale shows "0". Press **Mode** to select your desired measuring unit.
 - a. **Weight:** Choose between grams ("g"), ounces ("oz"), or both pounds and ounces ("lb:oz").
 - b. **Milk / Water:** Scale measures in milliliters ("ml") and fluid ounces ("fl'oz").

Note:

- *If you're using the bowl or another container to hold the items or liquid you're measuring, first place the empty container on the scale. Press **ZERO** to tare the container's weight (see **Zero/Tare Function**, page 9).*
- *Milk Mode accounts for the higher density of milk to provide a more accurate reading when measuring milk for recipes.*

3. Place your item on the scale.
4. Wait for the weight on the display to stabilize.

5. When you are finished weighing your items, press **ON/OFF** to turn off the scale.

Note:

- *To reset the scale, remove all weight from the platform and press **ZERO**.*
- *To conserve battery power, the scale will automatically turn off after 2 minutes of inactivity.*

Zero/Tare Function

Whenever you measure liquid or other items inside the included bowl, you can use the zero/tare function to remove the bowl's weight from the final measurement. You can also use other containers in place of the bowl.

1. Place the scale on a flat surface, then press **ON/OFF** to turn on the scale.
2. Place the bowl or container onto the weighing surface.
3. Press **ZERO**. The screen will display "0" again. *[Figure 3.1]*
4. Place liquid or items in the bowl. The scale will measure the contents without including the weight of the bowl. *[Figure 3.2]*

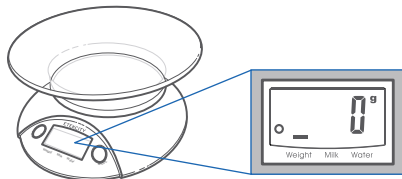


Figure 3.1

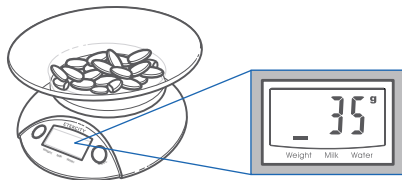


Figure 3.2

Maintenance

General Cleaning

- Clean the scale with a clean damp cloth, then dry immediately after with a dry cloth. **Do not** immerse the scale in water or use abrasive cleaning agents.
- All plastic parts should be cleaned immediately after coming into contact with fats, spices, vinegar, and strongly flavored/colored foods. Avoid contact with acidic foods like citrus fruits.

Replacing the Battery

1. If the scale is on, press **ON/OFF** to turn it off.
2. Open the battery compartment on the bottom of the scale.
3. Remove the old batteries.
4. Install 2 new 1.5V AAA batteries under the correct polarity. *[Figure 4.1]*

Replace the cover for the battery compartment.

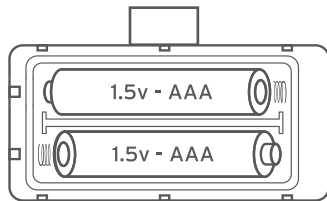




Figure 4.1

Troubleshooting

Warning Indicators

| | |
|---|--|
|  The image shows the text 'Lo' in a stylized, digital font, enclosed within a rounded rectangular border. | <p>Battery power is low. Install 2 new 1.5V AAA batteries.</p> |
|  The image shows the text 'Err' in a stylized, digital font, enclosed within a rounded rectangular border. | <p>Maximum weight capacity has been exceeded. Remove items from scale to avoid damage.</p> |

Warranty Information

| | |
|---|-----------------------|
| Product Name | Digital Kitchen Scale |
| Model | EK3551 |
| For your own reference, we strongly recommend that you record your order ID and date of purchase. | |
| Order ID | |
| Date of Purchase | |

Terms & Policy

Etekciti Corporation (“Etekciti”) warrants this product to the original purchaser to be free from defects in material and workmanship, under normal use and conditions, for a period of **2 years** from the date of original purchase.

Etekciti agrees, at our option during the warranty period, to repair any defect in material or workmanship or furnish an equal product in exchange without charge, subject to verification of the defect or malfunction and proof of the date of purchase.

There is no other express warranty. This warranty does not apply:

- If the product has been modified from its original condition;
- If the product has not been used in accordance with directions and instructions in the user manual;
- To damages or defects caused by accident, abuse, misuse or improper or inadequate maintenance;
- To damages or defects caused by service or repair of the product performed by an unauthorized service provider or by anyone other than Etekciti;
- To damages or defects occurring during commercial use, rental use, or any use for which the product is not intended;
- To damages or defects exceeding the cost of the product.

Etekciti will not be liable for indirect, incidental, or consequential damages in connection with the use of the product covered by this warranty.

This warranty extends only to the original consumer purchaser of the product and is not transferable to any subsequent owner of the product regardless of whether the product is transferred during the specified term of the warranty.

This warranty does not extend to products purchased from unauthorized sellers. Etekciti’s warranty extends only to products purchased from authorized sellers that are subject to Etekciti’s quality controls and have agreed to follow its quality controls.

All implied warranties are limited to the period of this limited warranty.

This warranty gives you specific legal rights and you may also have other rights which vary from state to state. Some states do not allow the exclusion or limitation of incidental or consequential damages, so the above limitation or exclusion may not apply to you.

If you discover that your product is defective within the specified warranty period, please contact Customer Support via **support@etekcity.com**. **DO NOT** dispose of your product before contacting us. Once our Customer Support Team has approved your request, please return the product with a copy of the invoice and order ID.

Every Etekcity product automatically includes a 2-year warranty. To make the customer support process quick and easy, register your product online at www.etekcity.com/warranty.

This warranty is made by:

Etekcity Corporation
1202 N. Miller St., Suite A
Anaheim, CA 92806

Customer Support

If you have any questions or concerns about your new product, please contact our helpful Customer Support Team.

Etekcity Corporation

1202 N. Miller St., Suite A
Anaheim, CA 92806

Email: support@etekcity.com

Toll-Free: (855) 686-3835

Support Hours

Mon-Fri, 9:00 am-5:00 pm PST/PDT

**Please have your invoice and order ID ready before contacting Customer Support.*

Connect with us @Etekcity





01.01_D_21H10_us