



de Le Cuona

OVERLAND

COLLECTION 2021

‘It is my favourite collection in terms of the new neutral palette and the craft that has gone into creating the structures of the cloths.’ BERNIE DE LE CUONA

OVERLAND

COLLECTION 2021

Bernie de Le Cuona embarks on a fabric journey that tracks the connections she’s made with nature, people and places along the way. de Le Cuona’s epic Overland collection enlivens these experiences in ten designs over fifty colour stories crafted using inventive techniques into the finest flax, wool and cashmere that span heavy and light weights, pattern and raw textures, bold and new neutral colours.

Overland lets creativity flow and imagination travel beyond traditional horizons. Fabrics off the beaten track are imbued with soul and a personal touch. Each of these fabrics and every colour was inspired by Bernie’s own memories and experiences that she hopes will resonate with others.

Drape

Cashmere Velvet – Topaz CVE1

Back of Motorbike

Left to Right:

Stampede – Tigers Eye STP8

Assegai – Gold ASE2

Assegai – Bronze ASE5



OVERLAND
COLLECTION 2021

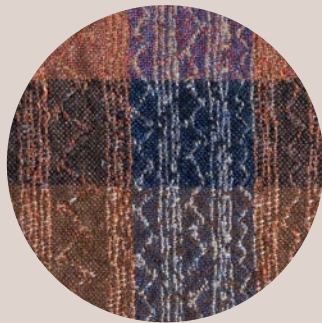
A LAND IMAGINED

Featuring
MATTHEW BALL
Royal Ballet Principal Dancer

Art-Direction & Photography
DAMIAN FOXE



Drape
Shuka SHU1



Shuka
SHU1

SHUKA

Shuka is a dense and durable cloth, which combines various colours in both warp and weft to create a rich and striking design. Reminiscent of the colourful garments of the Maasai tribe, this wool and linen blend would be a vibrant talking point in any room.

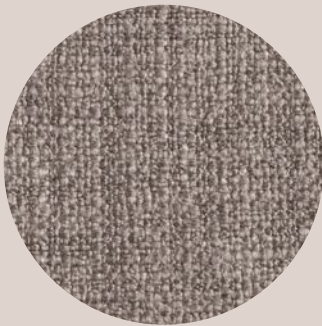




Drape
Warrior Cloth – Horizon WAR10
Background drape
Assegai – Hide ASE7
Base drape
Dahna – Scorched Earth DAH5
Cushions
Warrior Cloth – Forest WAR12



Woodland
WAR8



Lair
WAR9



Horizon
WAR10



Ravine
WAR11



Forest
WAR12

WARRIOR CLOTH

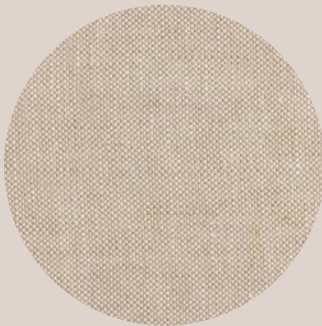
An extension of the gutsy textured Warrior Cloth linen. These new additions are coloured in the distinctive overland palette, which includes a range of ‘new’ neutrals with splashes of rich teal and green. A spectrum that evokes feelings of Africa and its diverse terrain. Made from a combination of wool and linen, Warrior Cloth is an ideal upholstery fabric.



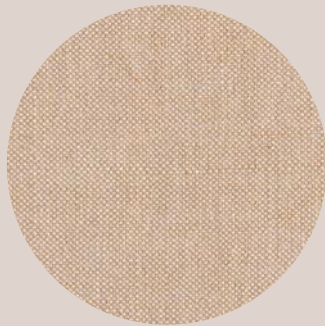
Shade left to right
Autumn – Terracotta AUT7
Autumn – Ochre AUT6
Autumn – Pecan AUT8
Drape
Kalahari – Impala KAL4



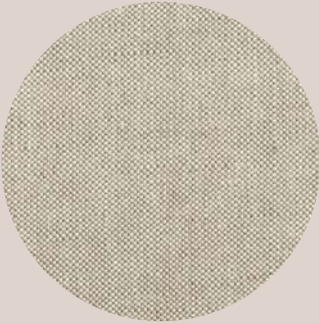
Ivory
AUT1



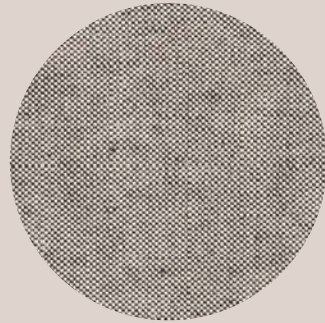
Tan
AUT2



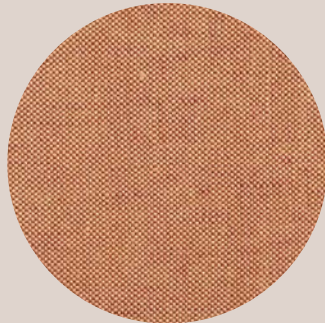
Honey
AUT3



Tea
AUT4



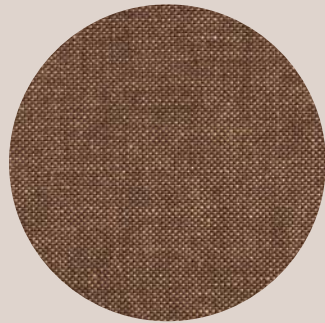
Ebony
AUT5



Ochre
AUT6



Terracotta
AUT7



Pecan
AUT8

AUTUMN

Autumn is a classic and elegant 100% linen fabric suitable for both curtaining and upholstery. This cloth has a graceful drape and buttery hand, which is soft to the touch. Sophisticated colour combinations in warp and weft create a tasteful shade range, which lends itself to both classic and contemporary schemes.





Drape
Tuli – Nectar TUL6
Tent
Dahna – Scorched Earth DAH5
Cushion
Kalahari – Impala KAL4
Throw
Warrior Cloth – Horizon WAR10





Aloe
TUL1



Frog
TUL2



Reed
TUL3



Berry
TUL4



Beetle
TUL5



Nectar
TUL6

TULI

Tuli is a characterful linen inspired by the Tuli Block in Botswana, a popular region for overland explorers. This robust stripe is reminiscent of a traveller’s cherished knapsack and the warm colour combinations work in harmony with the African landscape.

Drape
Stampede – Fossil STP2
Cushions left to right
Kalahari – Honey Badger KAL3
Stampede – Fossil STP2
Background
Coconut Container ENCO5B
Foreground
Coconut Planters ENCO7G/ENCO7H/ENCO7F

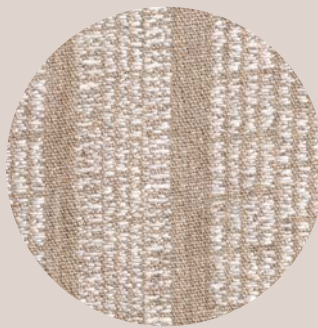




Bone
STP1



Fossil
STP2



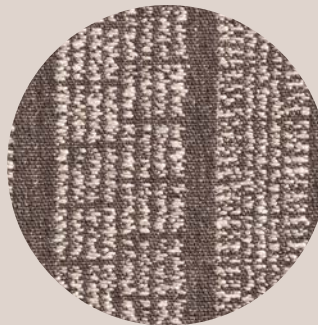
Tusk
STP3



Claw
STP4



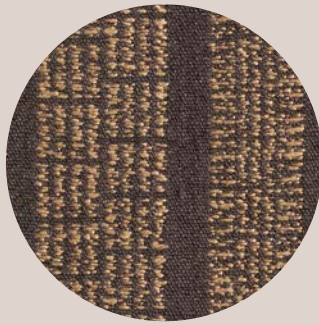
Horn
STP5



Thorn
STP6



Mane
STP7



Tigers Eye
STP8

STAMPEDE

Stampede is a rustic, earthy linen that reflects the myriad of animal tracks found in the sand after a stampede. Suitable for both curtaining and upholstery, this 100% linen fabric comes in a range of sun-bleached neutrals that feel pure and unrefined.

Background drape
Assegai – Hide ASE7
Base drape left
Dahna – Scorched Earth DAH5
Base drape right
Warrior Cloth – Horizon WAR10
Cushions
Warrior Cloth – Forest WAR12





Stone
ASE1



Gold
ASE2



Tan
ASE3



Ash
ASE4



Bronze
ASE5



Charcoal
ASE6



Hide
ASE7

ASSEGAI

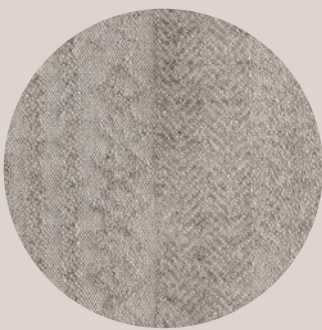
Inspired by the traditional spear native to Africa, Assegai is 100% linen and features a design that reflects the engravings found on these early objects. Each colourway features an accent colour inspired by the traditional craft of spear making; for example, the rich orange highlight in ‘Bronze’ is representative of the burning coals used to melt the iron. Suitable for both curtaining and upholstery.



Drape
Kalahari – Impala KAL4
Shade left to right
Autumn – Terracotta AUT7
Autumn – Ochre AUT6
Autumn – Pecan AUT8



Desert Lion
KAL1



Elephant
KAL2



Honey Badger
KAL3



Impala
KAL4



Wildebeest
KAL5



Rhino
KAL6

KALAHARI

Kalahari is a unique jacquard linen and wool fabric that combines different weave structures to create an intricate and pronounced design. The decorative patterns evolved from African symbols and are typical of those found painted on mud huts. Colours are muted yet strong.



Drape
Cashmere Velvet – Amethyst CVE5
Drape around head
Kalahari – Rhino KAL6





Topaz
CVE1



Fire Opal
CVE2



Ruby
CVE3



Quartz
CVE4



Amethyst
CVE5



Onyx
CVE6

CASHMERE VELVET

Cashmere Velvet uses the finest extra-long cashmere fibres to combine with mercerised cotton, before special production processes are carried out with meticulous care. The extra fine yarns are woven using an innovative setting loom, which tightly packs the fibres to create an extremely luxurious and compact pile. The pile is then cut and brushed numerous times to separate and open up these fine fibres, revealing the most exquisitely soft handle and perfect lustre. Cashmere velvet strikes the perfect balance between elegance and durability working just as beautifully as curtains or upholstery. Available in a range of rich colours which best illustrate the grandeur of the specialist fibres and techniques.



Drape left to right
Dahna – Windstorm DAH1
Dahna – Sand Dune DAH4



Windstorm
DAH1



Oasis
DAH2



Desert Rose
DAH3



Sand Dune
DAH4



Scorched Earth
DAH5

DAHNA

Dahna is a tightly woven 100% linen fabric inspired by the moving sands of the Ad-Dahna at different times of day. Created using a unique technique devised by de Le Cuona, Dahna displays subtle colour gradients that merge into an organic surface design. Due to the innovative nature of this product, no two batches are identical. We are happy to provide a cut for approval upon reserve. This is a double width fabric with an elegant drape and vintage hand.

CONTACT

PIMLICO STORE
44 Pimlico Rd
Belgravia
London, SW1W 8LP
+44 (0) 2077 300 944

HEAD OFFICE
Royal Windsor
Mistress Page’s House
13a High Street
Windsor, SL4 1LD
United Kingdom
+44 (0) 1753 830 301

**CHELSEA HARBOUR
SHOWROOM**
218, Design Centre
Chelsea Harbour
London, SW10 0XE
+44 (0) 2075 847 677

SOCIAL MEDIA
Instagram
Facebook
LinkedIn
YouTube
Pinterest

NEW YORK SHOWROOM
979 Third Avenue Suite 914,
D&D Building
New York, NY 10022
North America
+1 (212) 702 0800

For International clients please
visit our website for the full list
of stockists
www.delecuona.com

**NEW YORK DESIGN
CENTER SHOWROOM**
New York Design Center
Suite 1618
200 Lexington Avenue
New York, NY 10016
North America
+1 (646) 293 6634

We take great care with the
colours in our collections.
Please order your samples for
an actual colour match by
calling our Client Liaison Team
or make a request online.

CLIENT LIAISON TEAM
UK & International
+44 (0) 1753 830 301
info@delecuona.com
USA
+1 (212) 702 0800
usa_sales@delecuona.com

RESPONSIBLE LUXURY

de Le Cuona is not just a fabric house but a luxury brand with a vision for the future. It is serious about sustainability. Bernie de Le Cuona has always been conscious of her sources – she meets with farmers and works with specialist mills, so she knows the origins of every natural fibre used. The company has developed processes designed to cut down the textile waste and promote a circular economy.



INTERIOR FABRIC ACCESSORIES BESPOKE



DELECUONA.COM