

THE UK'S
BEST
PROPERTIES
REVEALED!

25 BEAUTIFUL HOMES

NOVEMBER
2023

SEE INSIDE MORE REAL HOMES THAN ANY OTHER MAGAZINE

Plan your room revamp

GORGEOUS SCHEMES
TO INSPIRE YOUR
STYLE UPDATES

• Cosy • Elegant
• Relaxed

- COLOURFUL KITCHENS
- VIBRANT LIVING ROOMS
- CLASSIC BEDROOMS

Create a feel-good home

HOW TO BRING COLOUR AND FLAIR TO EVERY SPACE

Country
manor house

Brick-built
cottage

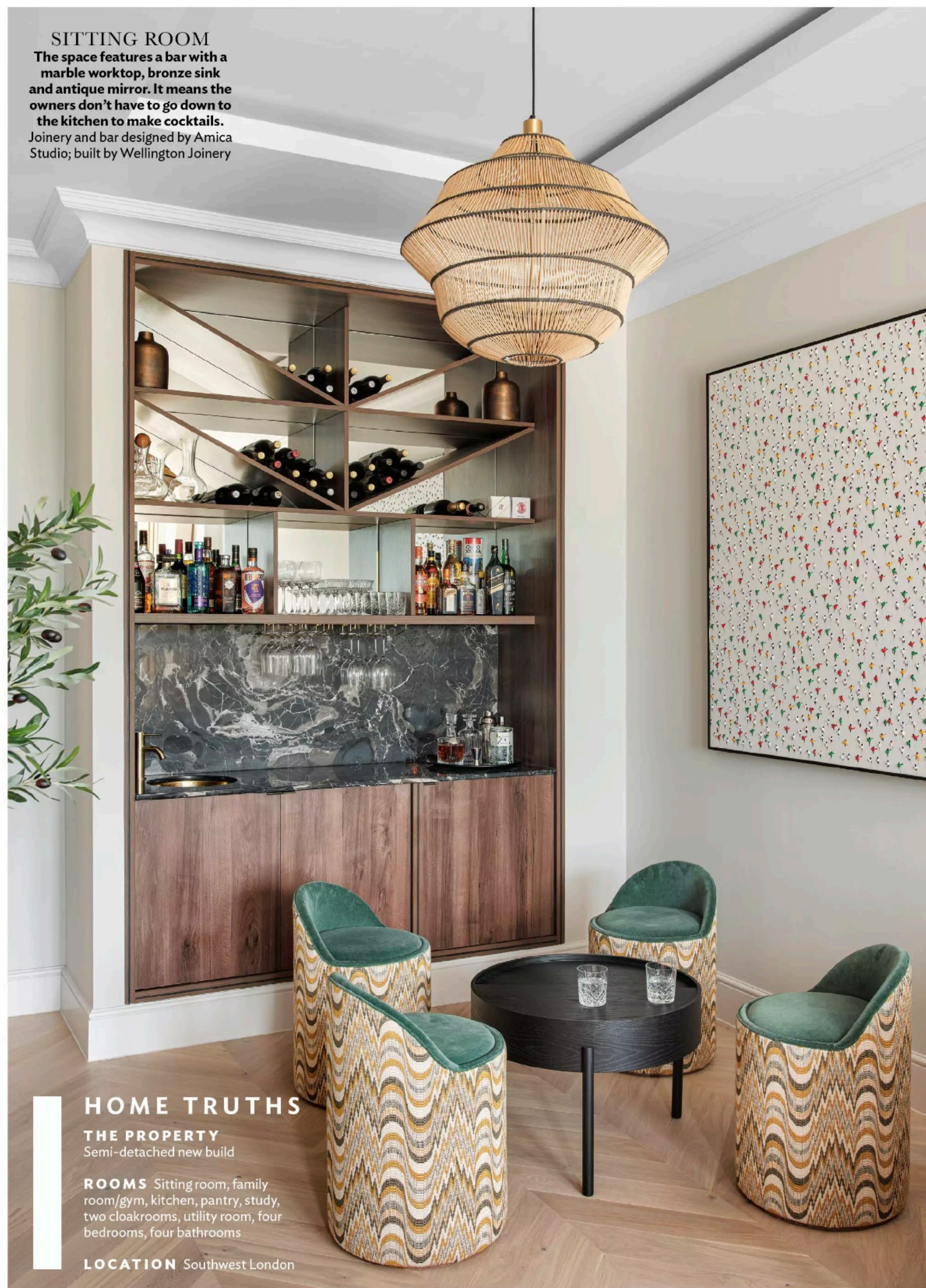
Period
apartment

Contemporary
new build

Edwardian
terrace

SITTING ROOM

The space features a bar with a marble worktop, bronze sink and antique mirror. It means the owners don't have to go down to the kitchen to make cocktails. Joinery and bar designed by Amica Studio; built by Wellington Joinery



HOME TRUTHS

THE PROPERTY

Semi-detached new build

ROOMS Sitting room, family room/gym, kitchen, pantry, study, two cloakrooms, utility room, four bedrooms, four bathrooms

LOCATION Southwest London

DINING AREA

A set of mirrors was incorporated here to make the space appear larger.

Extendable dining table, Andrew Martin. Pendant light, Holloways of Ludlow. Dining chairs, Heal's. Blind in fabric by de Le Cuona



KITCHEN

As the space is in the basement, it doesn't receive much light so the scheme was kept light and fresh. Pendant lights, J Adams & Co. Bar stools, Oka. Cushion in fabric by Gainsborough



HOW DID YOU COME TO BE INVOLVED IN THIS PROJECT?

We met the clients, a South African couple, through recommendation.

WHAT WAS THE BRIEF? The clients had bought a plot at the top of the hill and divided it into two, building an identical house in parallel. The difficulty was working with the landscaping and levels to achieve a comfortable property – at its widest point, the house is 4.2 metres and 20 metres long, tiering over four floors and cutting into the landscape, so it was difficult to fit everything in. The brief was to fully design the property, utilising the levels through clever spatial planning, and fully design and furnish the property for a fabulous fun couple, maximising the views over southwest London.

DESCRIBE THE HOMEOWNERS' STYLE Their style is very modern eclectic, and they love abstract, funky patterns. They wanted a neutral backdrop and then to introduce

pops of colour with the furniture in case they decided to sell the house in a few years.

WHAT WERE THE BIGGEST PRIORITIES FOR THE HOMEOWNERS? Having entertaining space for friends and family. In the sitting room, there's a bar we designed to fit their wine collection and pouffes to create a more informal party space to unwind.

WHAT WAS YOUR INSPIRATION FOR THE SCHEME? When meeting the clients, she had a jazzy textured handbag and chic embroidered jacket, which was gorgeous, so we knew they had style. We ordered all the most interesting fabrics we could find and incorporated them into little pockets in each room where we could. Our particular favourite is the Holistic Proud fabric by Lizzo on the main bedroom bolster cushion.

WHICH ROOM WAS THE MOST IMPORTANT TO THE HOMEOWNERS? The main en suite was important to our client as she really

wanted a calm, serene bathroom that felt like a spa. It was vital to create different textures and tones in the space.

WHAT WAS THE BIGGEST CHALLENGE? Definitely the spatial planning of the main suite. Trying to get a bath, a double basin, a steam shower and a loo to fit comfortably was really difficult. But we managed to pull it off by building a bespoke vanity with a ribbed detail design for storage and hid the loo in the recess, utilising the dressing room space by creating a faux smoked glass wall.

WHAT IS YOUR ADVICE FOR CREATING A SUCCESSFUL SCHEME? Always listen to your clients and what they want, learn about how they want to use a space and guide them to understand each room's function. We also ask them about hotels and restaurants that they've felt comfortable in, then incorporate elements of those schemes to ensure we are creating spaces they can relax in. ²⁵

amicastudio.co.uk

‘As the rooms are quite narrow, big furnishings were kept neutral to blend in and create a sense of space’