

The

ENGLISH HOME



Celebrating the essence of English style

July 2023 | Issue 221 | £4.99 | UK Edition

FOREVER SUMMER

Homes that evoke year-round sunshine

LUXURY ESCAPES

Hand-picked places to stay in England

Holiday style at home

Global influences for relaxed, eclectic interiors

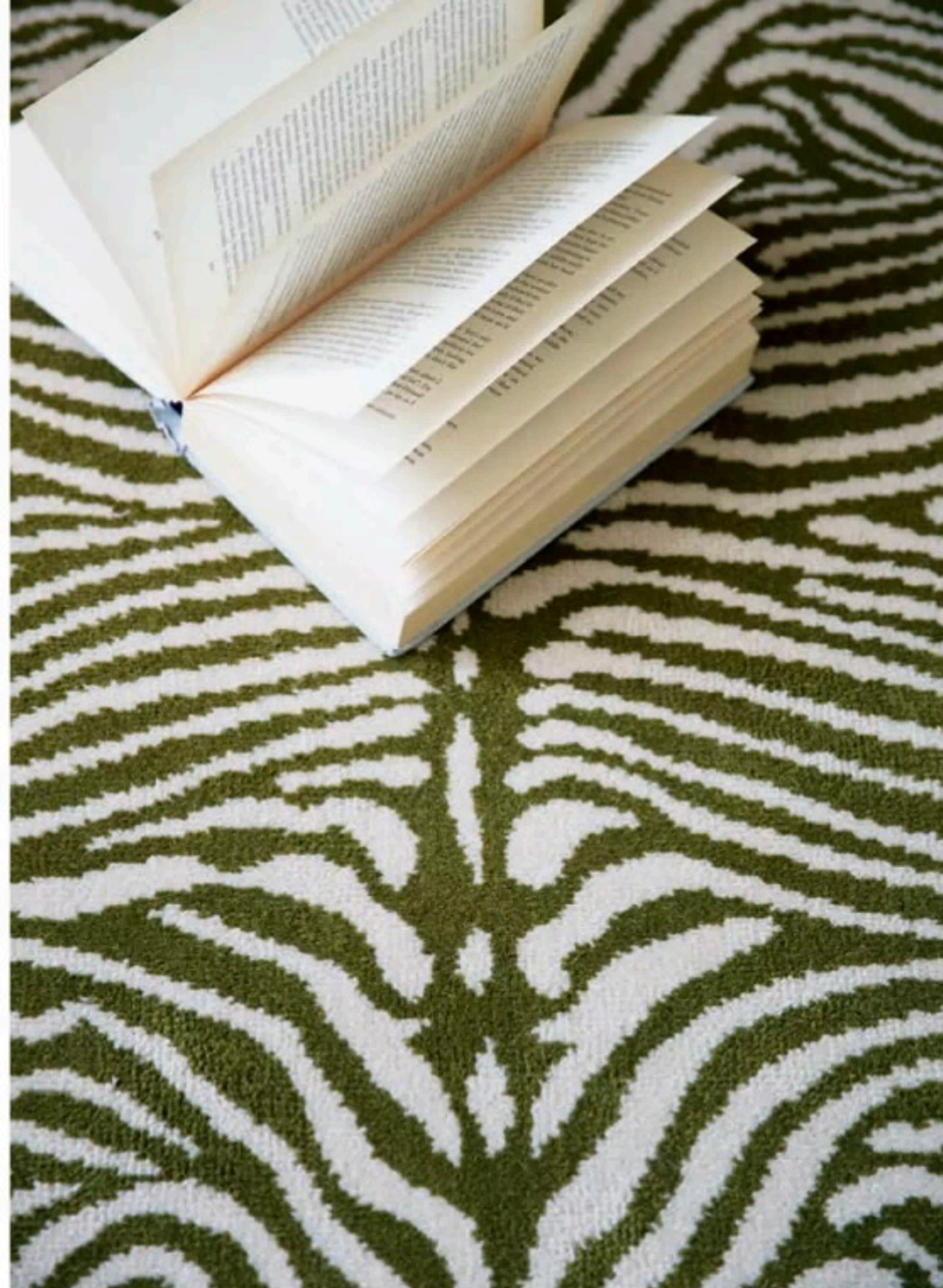
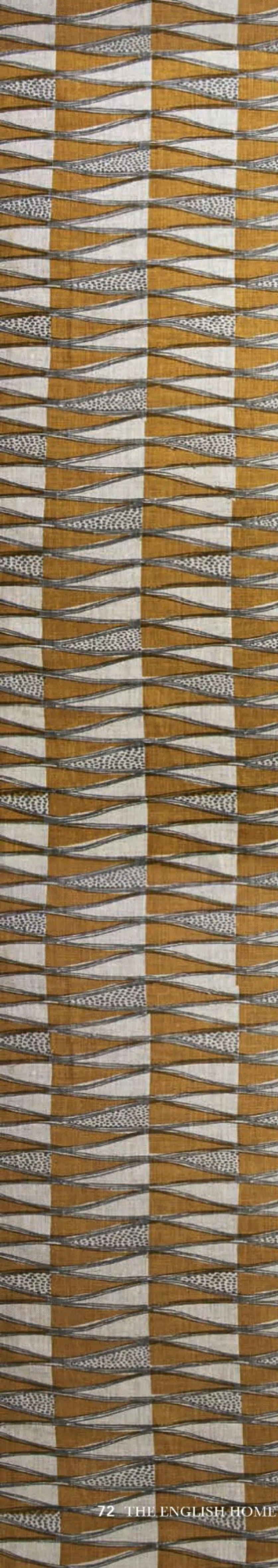
EXPERT GUIDES

- Bathroom updates
- Decorating in shades of blue
- New season buys

COOKS' KITCHENS

Clever design ideas plus advice from celebrity chefs





CALL *of the* WILD

Bring chic safari inspired patterns, tones, and textures to a country home for a smart look that combines African designs, animal prints and a touch of wild eclecticism

The English are no strangers to adopting styles seen around the world. Often our homes have a comfortable synergy with anglicised Asian motifs – from delicate chinoiserie to decorative paisleys and charming hand-blocked prints. African-inspired designs, however, are seeing a surge in popularity too, with several designers turning to the continent for inspiration.

At Design Centre Chelsea Harbour's Wow!House, interior designer Christian Bense has collaborated with de Le Cuona to create a bedroom which has the concept of "grand safari meets London town, with touches of Africa in a traditional English backdrop". Kate Guinness has collaborated with The Safari Canvas Company to create a chic take on safari-style-under-canvas to be used as alternative luxury accommodation at smart country hotels. Alice Temperly's new designs for Romo combine playful leopard

prints with grand floral designs in schemes that exude glamour.

Leopard and other animal prints continue to be popular for pairing subtle pattern with other, more exuberant motifs. Tribal-inspired prints are also coming through in some collections, such as Lewis & Wood's Travel Trunk, which draws on global influences, including Nigerian resist-prints and nomadic designs. Exciting, unexpected patterns such as these can be used to add a touch of character to rooms.

Avoid creating a pastiche of an *Out of Africa* look by pairing animal prints with stripes or African patterns with florals to maintain the charming, eclectic look we are famed for. Offset antique furniture with authentic woven baskets, leather or rattan for added texture, and play with a palette of browns. This look obviously has great harmony with earthy tones, but can be pretty with touches of blush and green. ▶

ABOVE Use a striking zebra print for pattern underfoot. Quirky Zebo Moss Carpet, £124.85 a square metre, Alternative Flooring **SWATCH** Bring a taste of Moroccan sunshine to interiors. Tangier, Saffron, £197.40 a metre, Walter G at The Fabric Collective

DECORATING

This celebration of the animal kingdom makes a talking point as a backdrop in a dining room for glamorous dinner parties. Afrika Kingdom wallpaper, £285 a roll, Cole & Son



DECORATING



TOP LEFT Inspired by animal tracks and African spears, these sumptuous fabrics offer a luxurious take on safari style. These designs are used by Christian Bense in his bedroom scheme for Wow!House.

Stampede, Tigers Eye, £222 a metre; Assegai, Gold and Bronze, both £234 a metre, all de Le Cuona

BOTTOM LEFT Alice Temperley's collaboration with Romo combines country house glamour with playful leopard print. In a light blush, this exemplifies how animal print can be a sophisticated, subtle choice while still making a statement, *Kitty, Powder Room, £135 a roll; Leopard Braid, Tan, £27.50 a metre, Temperley London x Romo*

RIGHT Add some lightness to earthy tones with a delicate honey yellow.. *Caldecote, Honey, £128 a metre, Cloth & Clover at The Fabric Collective*

