

# ELLE DECORATION

MARCH 2024

**REPLACE CHAOS  
WITH CALM**  
THE STRESS-FREE  
GUIDE TO STORAGE  
FOR EVERY ROOM

**BIJOU BATHROOMS**  
EPIC IDEAS FOR  
YOUR HOME'S  
SMALLEST SPACE

**CREATURE  
COMFORTS**  
LUXURY LIVING FOR  
PAMPERED PETS

## CLEAR & PRESENT

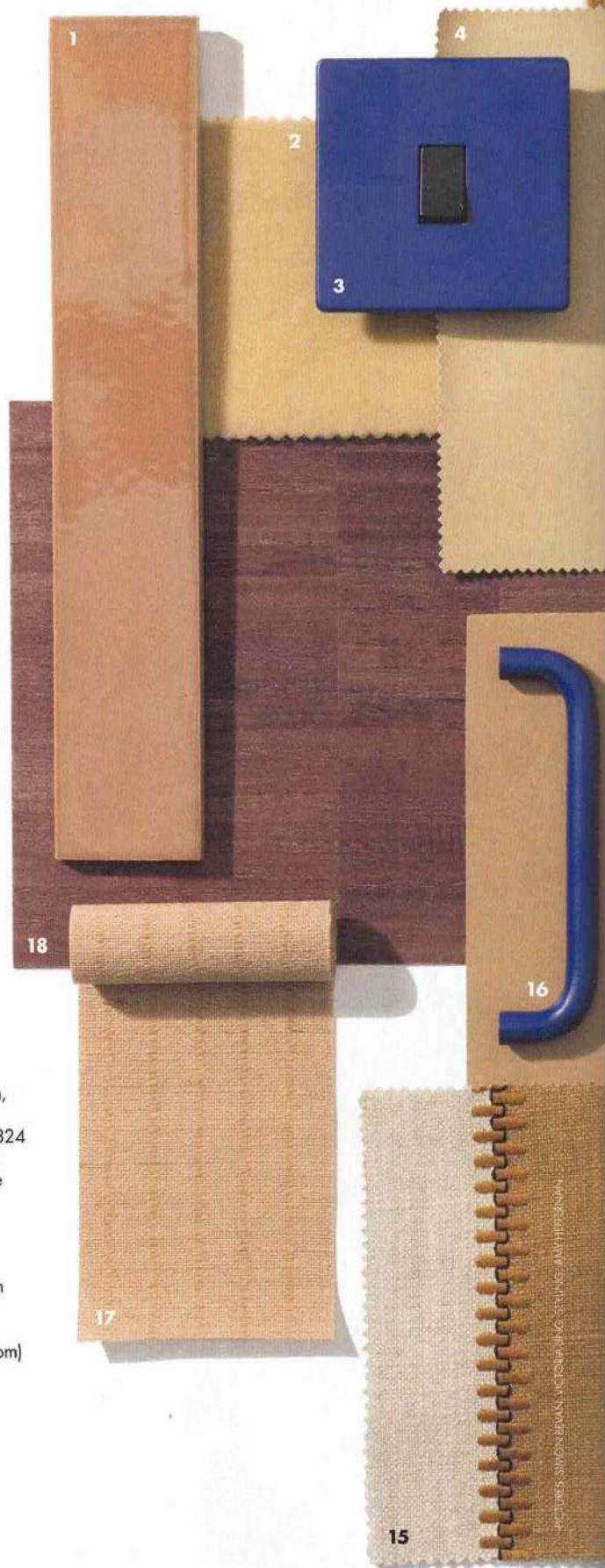
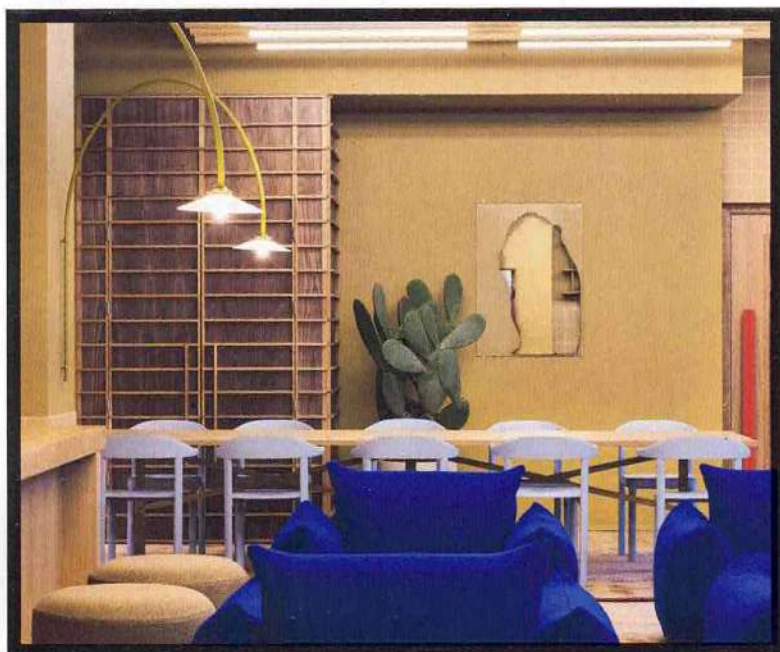
WHY GLASS IS THE DESIGN WORLD'S NEW OBSESSION





## The inspiration

Providing people with a 'gentle punch' was Note Design's invigorating approach to the interior of The Office Group's Douglas House, a six-storey co-working office near Marylebone. The space's members were welcomed by contrasting materials, colours and forms – a signature move for the Stockholm-based studio widely recognised for its bold and attention-grabbing designs. Tan-brown paint shades with subtly sweet toffee tones were combined with dark woods and seating in sky blue and cobalt. It's a colour palette that could not be more timely: caramel hues and electrifying blues are both having a moment. Together, they create a comfortable and calm yet mentally stimulating environment. [notedesignstudio.se](http://notedesignstudio.se)

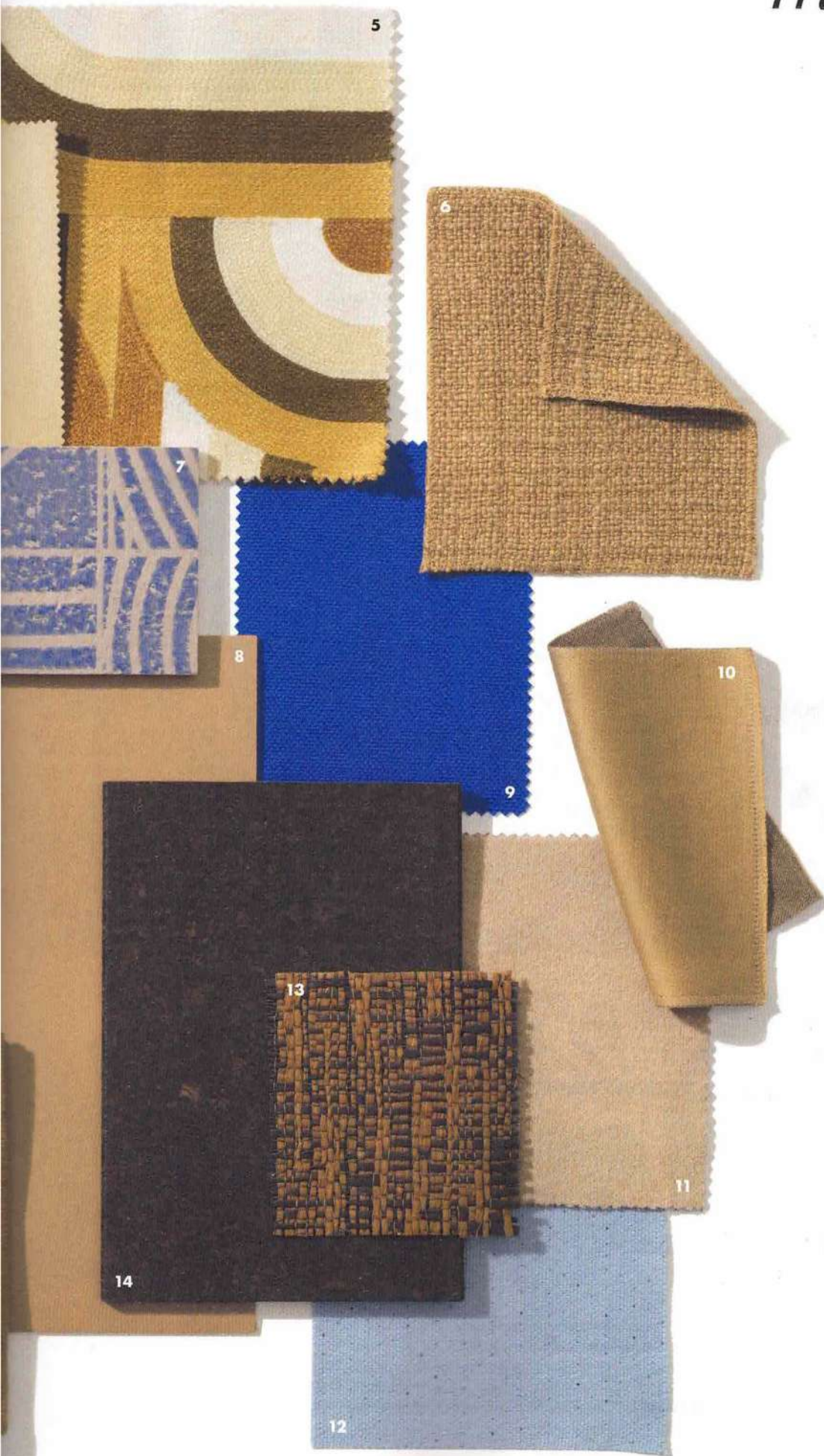


## The palette

- 1 'Luz' tile in 'Caramel', price on application, Marazzi ([marazzitile.co.uk](http://marazzitile.co.uk))
- 2 'Mohair' fabric in 'Sand', £288 per m, Beata Heuman ([beataheuman.com](http://beataheuman.com))
- 3 'Galactic' single rocker switch in 'Cobalt', £31.99, Dowsing & Reynolds ([dowsingandreynolds.com](http://dowsingandreynolds.com))
- 4 'Coast' performance fabric in 'Bungalow', £63.50 per m, Ultrafabrics ([ultrafabrics.com](http://ultrafabrics.com))
- 5 'Plan B' fabric in 'Tobacco', £170 per m, Zinc Textile ([zinc textile.com](http://zinc textile.com))
- 6 'Warrior Cloth' fabric in 'Horizon', £234 per m, De Le Cuona ([delecuona.com](http://delecuona.com))
- 7 'Mater' glazed porcelain tile by Patricia Urquiola for Mutina, from £312 per sq m, Domus ([domusgroup.com](http://domusgroup.com))
- 8 'Etrusco' linoleum flooring, £30 per sq m, Tarkett ([tarkett.co.uk](http://tarkett.co.uk))
- 9 'Viggo' wool fabric in 'WO 111 66', £198 per m, Elitis ([elitis.fr](http://elitis.fr))
- 10 'Good Time' fabric, £193.90 per m, Zimmer + Rohde ([zimmer-rohde.com](http://zimmer-rohde.com))
- 11 'Alpaca' velvet fabric in 'Camel', £324 per m, Schumacher ([fschumacher.co.uk](http://fschumacher.co.uk))
- 12 'Ara' fabric in '0724' by Margrethe Odgaard, £151 per m, Kvadrat ([kvadrat.dk](http://kvadrat.dk))
- 13 'Waha' fabric, £117 per m, Casamance ([casamance.com](http://casamance.com))
- 14 'UNA Charred Oak' flooring, from £67 per sq m, Recork ([recork.co.uk](http://recork.co.uk))
- 15 'Parment' fabric in '41120252', £117 per m, Casamance ([casamance.com](http://casamance.com))
- 16 'Shanghai' handle in 'Galactic', from £13, Dowsing & Reynolds ([dowsingandreynolds.com](http://dowsingandreynolds.com))
- 17 'Brown Plant' blind, from £108, Color & Co ([colorandco.co.uk](http://colorandco.co.uk))
- 18 'VLA-157 Laurence Current' wallcovering, £165 per m, Fameed Khaliq ([fameedkhalique.com](http://fameedkhalique.com))



# moodboard



## The colour card

- 1 'Morandi Yellow', from £54 for 2.5 litres, Atelier Ellis ([atelierellis.co.uk](http://atelierellis.co.uk))
- 2 'Sand Dune', from £30 for one litre, Rose Uniacke ([roseuniacke.com](http://roseuniacke.com))
- 3 'Camel 2165-10' paint, from £22.50 per litre, Benjamin Moore Paint ([benjaminmoorepaint.co.uk](http://benjaminmoorepaint.co.uk))
- 4 'Galette', from £25 per litre, Little Greene ([littlegreene.com](http://littlegreene.com))
- 5 'Clear Sky', £31 for one litre, Designers Guild ([designersguild.com](http://designersguild.com))
- 6 'Kittiwake', from £31 per litre, Farrow & Ball ([farrow-ball.com](http://farrow-ball.com))
- 7 'Ultramarine Blue', from £34 per litre, Mylands ([mylands.com](http://mylands.com))
- 8 'Muddy Maddie', from £45 for 2.5 litres, Claybrook ([claybrookstudio.co.uk](http://claybrookstudio.co.uk)) ▶

