

the TEXTILE EYE

Report No. 5 - Spring 2020

INSPIRATION, INSIGHT & TREND FOR THE DESIGN ENTHUSIAST

PERSUASIVE PALETTES

INFLUENCES IN COLOR

INSPIRING THEMES

*GEMS FROM PARIS DECO OFF
& MAISON ET OBJET*

AND FROM PARIS:

**RICH TAPESTRY
& FAVORITE DISHES**



Paris Deco Off & Maison et Objet Paris 2020

MULTI-SHOW REPORT





Maison et Objet

Paris, January 17-21

Retailers and interior designers shop new collections of every conceivable category of home goods.

Maison & Objet takes place at the sprawling Parc des Expositions Paris Nord Villepinte, covering everything from sofas to home fragrance, megastyle brands to individual artisans. Attending this show, which is spread out over eight halls, always translates to my “most steps for the year” days!

Paris Deco Off

Paris, January 16-20

Home furnishing fabric editors and wholesalers present new collections to an audience of interior designers.

Paris Deco Off is the place for fabric editors to unveil new collections, and takes over two bustling Paris neighborhoods. The more established houses have permanent showrooms. Those that don’t employ the pop-up strategy, with many emerging collections re-imagining small gallery spaces and re-purposed boutiques. This show is extremely popular among American designers, with the West Coast being especially well represented.

Theme

Atlas: Ancestral

For their spring collections, design houses looked abroad for inspiration. Asian influences continued strongly, with Chinoiserie ceding ground to elegant and colorful Japanese designs. From Africa, Kuba cloth from Congo and Bogolan (mudcloth) from Mali were favorites, often interpreted in fine constructions. Turkey was particularly influential, with motifs inspired by Turkish miniature painting being especially interesting. Paisleys from India and Central Asian suzanis and ikats continued to be celebrated, and woven looks reminiscent of Central American work were on the rise.

LOOKS

Turkish or Persian looks, especially inspired by miniature paintings

Lavish treatments including silk and handpainting

Finely woven multi-color jacquards

Intricate, full-coverage embroideries

Richly-colored velvets and epinglés

Pattern-on-pattern layering

Rustic raffia and veg-dye colorations

RIGHT: India Mahdavi, de Gournay







Lizzo



de le Cuona



Jim Thompson

Theme

Texture: 70's / Bohemian

A free-spirited, retro influence came on strong in the texture category. Heavy and natural-looking fabrics with a handwoven feel were paired with streaked and striéd patterns reminiscent of abstracted landscapes. Chunky wovens used flecked yarns with a hand-spun look to create an unrefined, multi-color appeal. Bouclés and undyed furs that would look at home in a sunken living room paired with macramé-style details with a hippie-ish tone. These groovy looks felt fresh, especially when elegant constructions were employed to produce their rustic-chic sensibilities.

LOOKS

Casual looks using refined techniques (applique, novelty yarns)

Graphic organic texture including marbled and maze-like

Embroidery using dry yarns and natural embellishments

Multicolor flecked and mottled yarns

Hand-spun and hand-woven looks

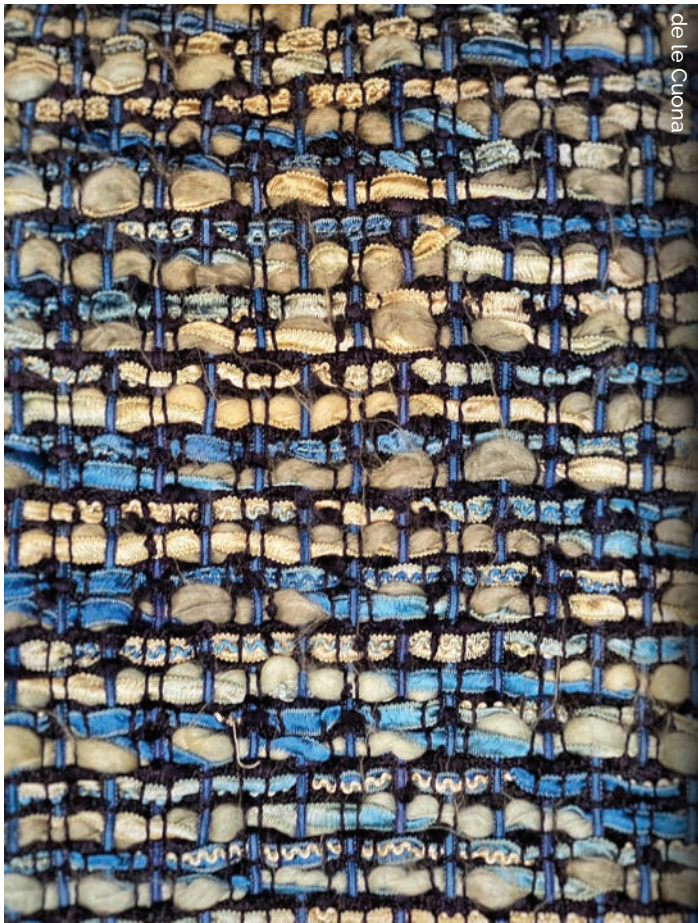
Landscape patterns

Felt and dry woolens

High pile with a shag rug vibe

RIGHT: Missoni Home

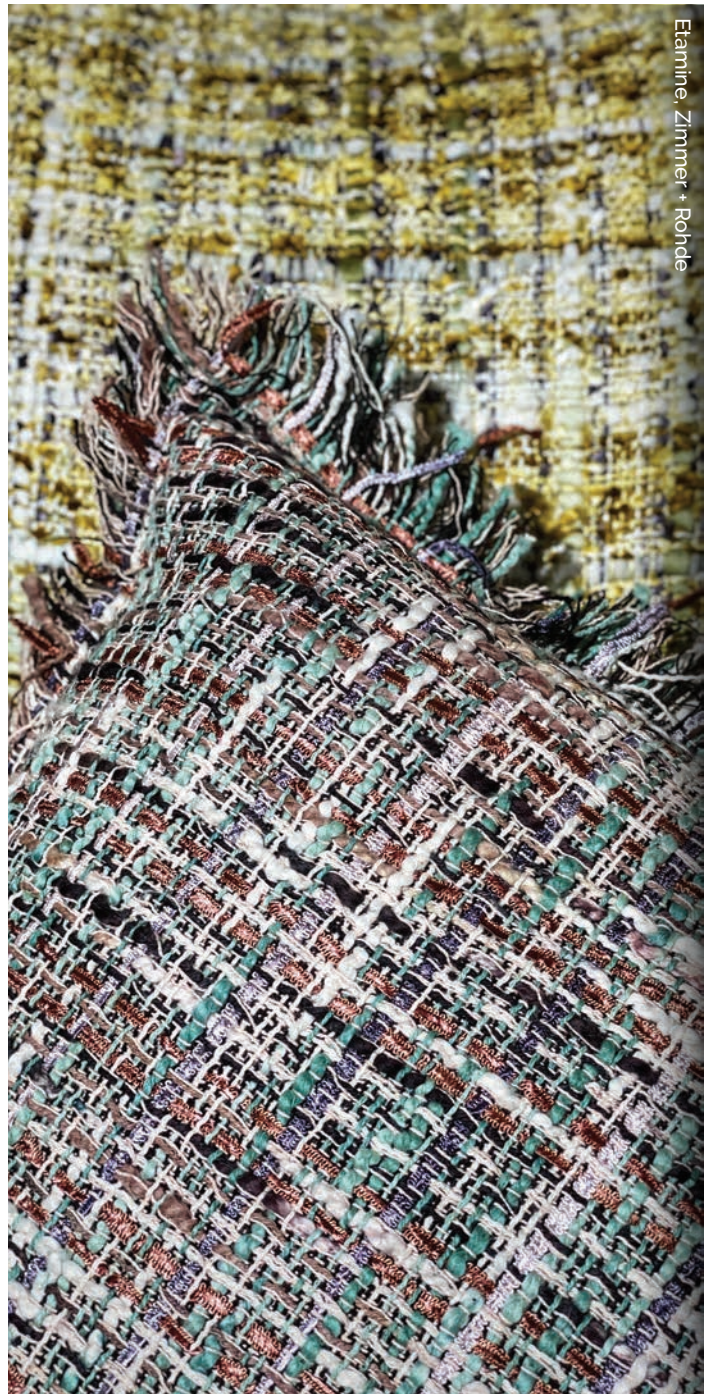




de le Cuona



Holland & Sherry



Etamine, Zimmer + Rohde



Elitis



de le Cuona



Lisoy



Aquanova

Theme

Weaves: 50's / Preppy

In contrast to the prevalent more-is-more vision of texture, a number of collections featured sharp, buttoned-up offerings with a tidy and tailored feel. The look was sometimes nautical, sometimes sartorial, and sometimes a touch glamorous, but always imbued with an uptown crispness. Linens, cottons and wools were used in classic herringbones, and twills. Leather, woven into orderly rows, appeared in chairs and accessories. Colorations were clean, eschewing mottled effects in favor of flawless clarity.

LOOKS

Classic weaves: twills, herringbones, and piques

Tailored details including crisp contrasting welts

Matelassé and quilted effects

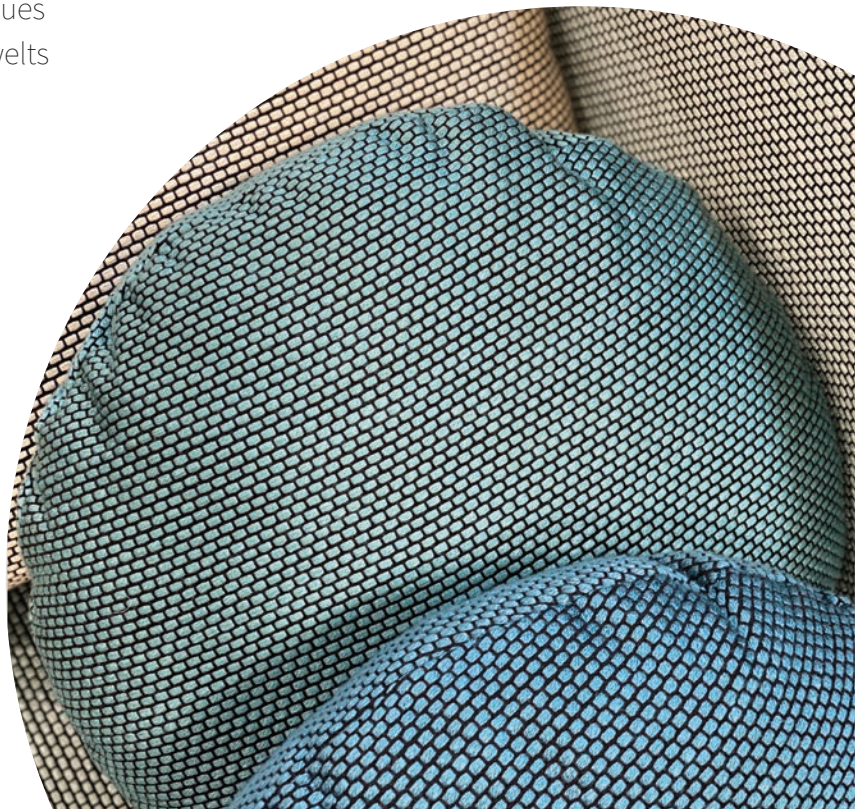
Orderly stripes and checks

Clean single-hue colors

Matte-sheen contrast

Natural fibers

RIGHT: Casal





Loro Piana



Karin Sajo



Larsen



de le Cuona

