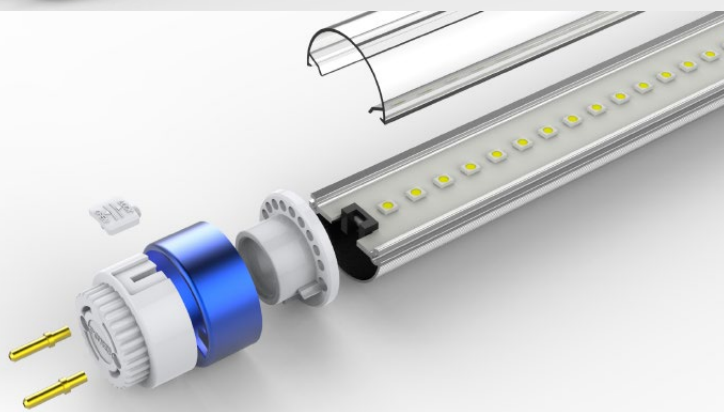
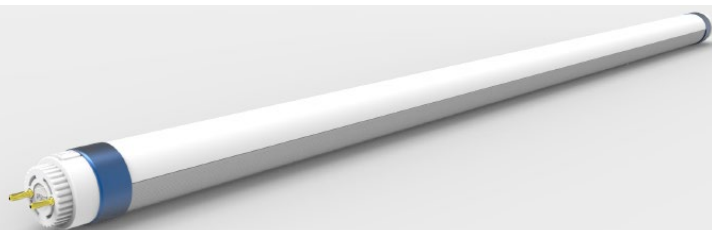


EARTHLIGHT
POSEIDEN SERIES
TRI-PROOF TUBE LIGHTS



FEATURES

- » Patented 180Deg rotating end cap design for the best lighting result
- » Just replace starter with Ervan LED fuse for retrofit
- » Single end power anti electric shock ensures safety
- » Maximum efficacy and minimum glare
- » High-tech optical design
- » TUV/SAA/RCM/C-Tick certification

APPLICATIONS

- Office
- MTR stations
- Gas stations
- Supermarket
- Train stations
- Bus Station
- Hotel
- Airport
- Shopping Complex



GENERAL SPECIFICATIONS

Models	ETG-ST8-600 / 900 / 1200 / 1500
Sizes	2 ft / 3 ft / 4 ft / 5 ft
Cover	Frosted Cover / Clear Cover
Operational Temperature	-20 °C ~ +40 °C
Power Efficiency	≥0.90
PF	≥0.95
Input Voltage	AC220~240V 50/60Hz
Humidity	10% - 80%
THD	<20%
Mountable	Indoor / Semi-Outdoor

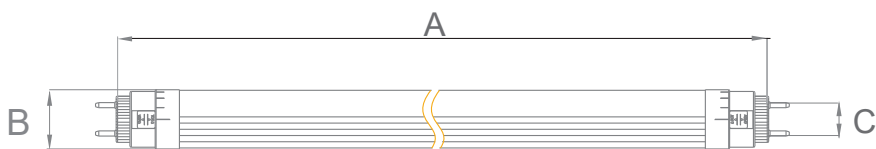
SPECIFICATION



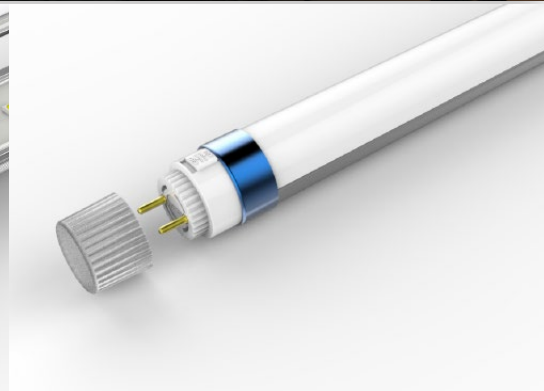
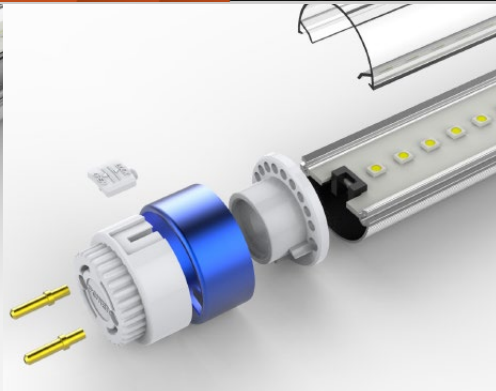
MODEL	ETG-ST8/600MM	ETG-ST8/900MM	ETG-ST8/1200MM	ETG-ST8/1500MM
Power(W)	11	17	20	24
Light Source	2835	2835	2835	2835
CCT(K)	6500K	6500K	6500K	6500K
AC Input	100-277V 50/60Hz	100-277V 50/60Hz	100-277V 50/60Hz	100-277V 50/60Hz
LED Qty	56	84	112	168
Operating Temperature	-20 ~ +40°C	-20 ~ +40°C	-20 ~ +40°C	-20 ~ +40°C
Power Efficiency	≥0.90	≥0.90	≥0.90	≥0.90
Power Factor	≥0.90	≥0.90	≥0.90	≥0.90
THD	<20%	<20%	<20%	<20%
Lm/W (Clear)	160 lm/W	160 lm/W	160 lm/W	160 lm/W
Lumens (Clear) [LM]	1760	2720	3200	3840
Lm/W (Frosted)	150 lm/W	150 lm/W	150 lm/W	150 lm/W
Lumens (Frosted) [LM]	1650	2550	3000	3600
Water & Shock Proof	IP65	IP65	IP65	IP65
CRI	>80	>80	>80	>80
Beam Angle	120°	120°	120°	120°
Installation Height	3 - 8 Meter	3 - 8 Meter	3 - 8 Meter	3 - 8 Meter
Warranty	5 Years	5 Years	5 Years	5 Years

CCT Range WW(3000K) NW(4000K) DW(5000K) CW(6500K)

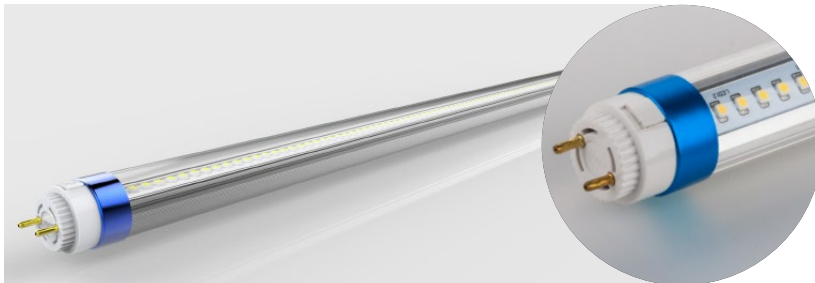
DIMENSION



Model NO.	Size A (mm)	Size B (mm)	Size C (mm)
ETG-ST8/600MM	588	26	G13
ETG-ST8/900MM	894	26	G13
ETG-ST8/1200MM	1198	26	G13
ETG-ST8/1500MM	1498	26	G13



TRIDENT TUBE FROSTED COVER



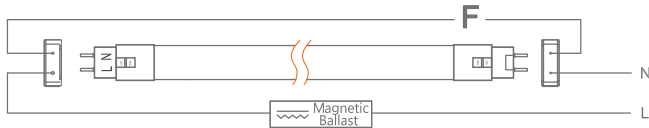
TRIDENT TUBE CLEAR COVER

LED FUSE

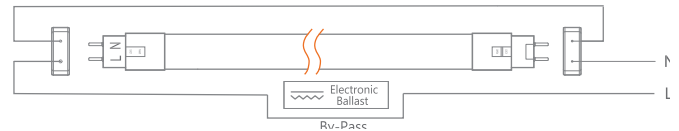


INSTALLATION

Installation For Magnetic Ballast



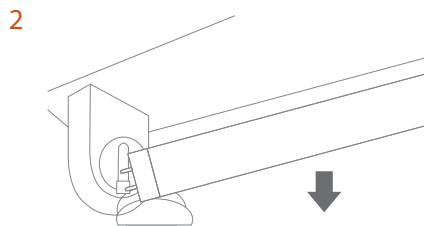
Installation For Electronic Ballast



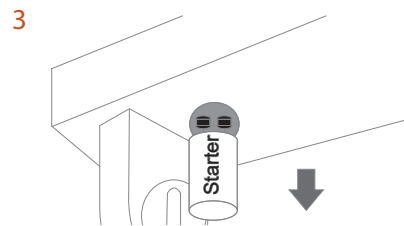
⚠ just replace starter with fuse for retrofit only suitable for batten with magnetic ballast , not electronic ballast

⚠ Electronic ballast must be by-passed by a registered electrician

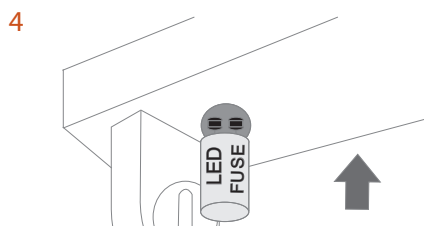
1 Power OFF



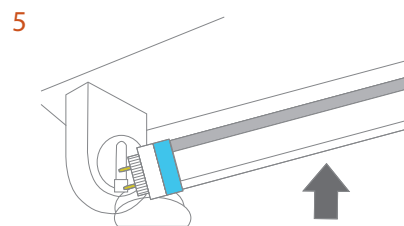
Take out the fluorescent tube



Take out the starter



Install LED fuse



Install LED tube

6 Power ON

PLEASE NOTE: All the operations must be in the condition of power off
The luminaries are intended for indoor use or semi-indoor use.

⚠ Caution: The product is not suitable for any oil pollution ambient or related applications.

- » Before installing the lighting fixtures, please read this instruction manual carefully.
- » The lighting fixtures should be installed, connected and tested by a certified installer based on the local regulations.
- » Lamps should always be installed or replaced with care.
- » Please check the local voltage in accordance with the product requirements before using the product.
- » Relamping only can be done when the power is off and the lamp is completely cooled down.
- » When a lamp is to be cleaned, make the power off and let it cool down completely. Clean the fixture with a soft cloth and a standard PH neutral detergent. Stainless steel finishing should be maintained regularly.
- » Misuse of, or changes to the fixture shall nullify the guarantee.
- » Don't cover the fixtures with flammable materials.
- » Exclusively replaced by the manufacturer or his service agent or the similar qualified person in order to avoid a hazard.



DISCLAIMER

Important Statement of warranty.

Earthtrack reserves the right to change or discontinue a product and / or specification without notice. All warranty periods only cover faulty workmanship and / or material components. Any claims on misused or disassembled products will not be recognized by Earthtrack. All information enclosed in this catalogue, to our knowledge, was correct at time of print.